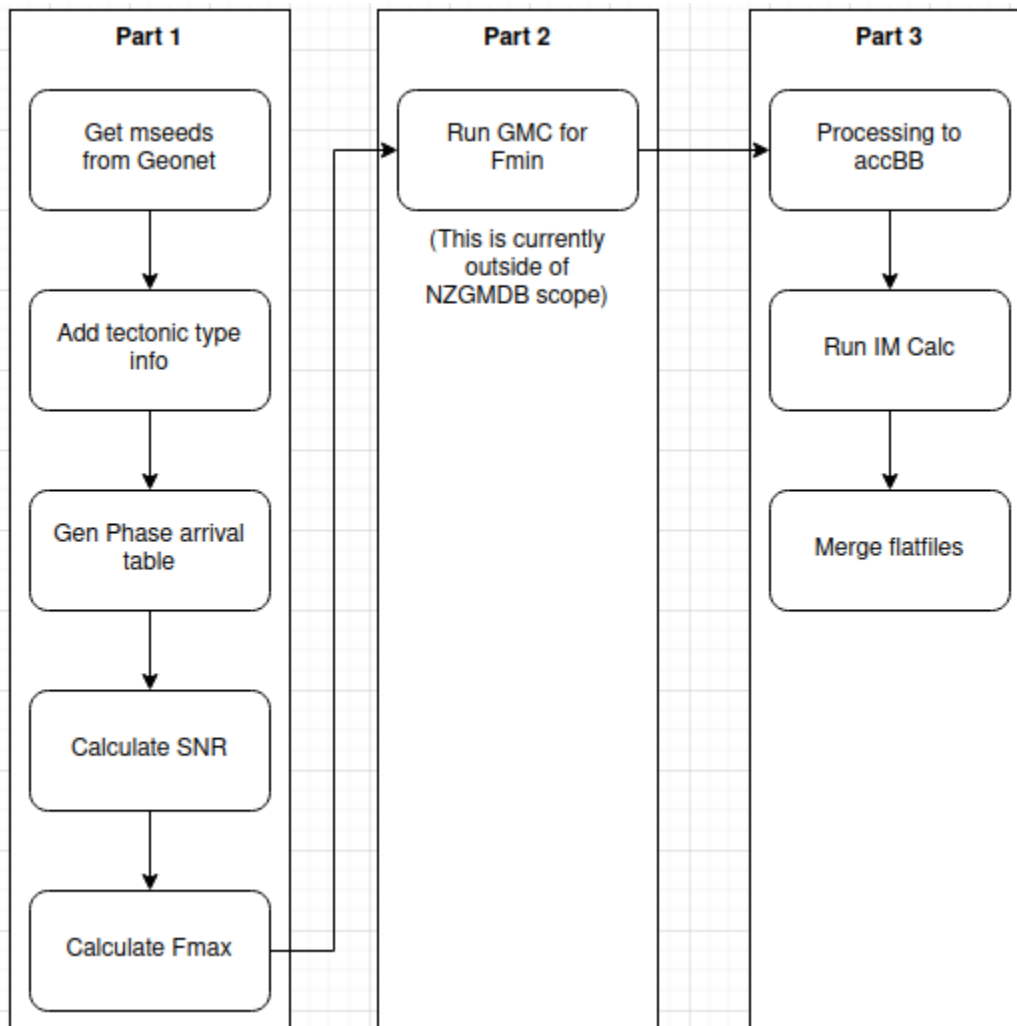


# Ground Motion DB (GMDB)

## New Structure / Workflow Overview



### Current completed steps

Get mseeds from Geonet  
Add Tectonic type info  
Run GMC for Fmin  
Calculate SNR

### Half completed

Gen Phase arrival Table  
Calculate Fmax  
Process to accBB  
Run IM Calc

### To Do

Merge Flatfiles  
clipped\_filter  
fmin\_fmax filter

### Structure

NZGMDB

- archive (Old NZGMDB version code)
- data (data files that contain files needed for running of the NZGMDB)
- data\_processing (Files for data processing such as waveform processing)
- data\_retrieval (Files to fetch data and process it from geonet, includes merging tect type in from geonet and other sources)
- calculation (Contains files needed for SNR, fmax and IM calculation over the NZGMDB)
- management (Files for general management of the NZGMDB, configs and file structure handling)
- mseed\_management (Files to manage mseeds, read, write and convert)
- phase\_arrival (Files to manage the p wave picker and creation of the phase arrival table)
- scripts (Scripts that can be run for the nzgmdb, run\_nzgmdb contains multiple functions that can be executed as scripts such as the entire workflow or just small sections)