

CSV comparison

Notes:

- Events only go up to 2019-10-01 09:52:00
- Does not include all known earthquakes such as the Kaikoura earthquake

2 sequential events looked at:

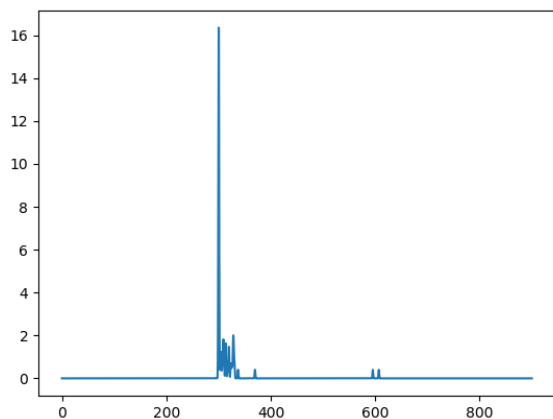
1. 2019-09-22 09:59:00 (68 stations)
2. 2019-09-30 21:07:00 (14 stations)

Summary

	Event 1	Event 2
# Stations CSV	68	14
# Stations in FDSN not in CSV	257	310
# Stations in CSV not in FDSN	1 (NWFS)	0
# Stations FDSN	324	324
# Stations FDSN with trigger	115	0
# Stations FDSN with trigger in CSV	64 / 67	0
# Stations FDSN with trigger not in CSV	51	0

Consensus Plots

Event 1. Peak at start, only single peaks outside shaking area. ~30x peak sum.



Middle events (below)

Event 2.

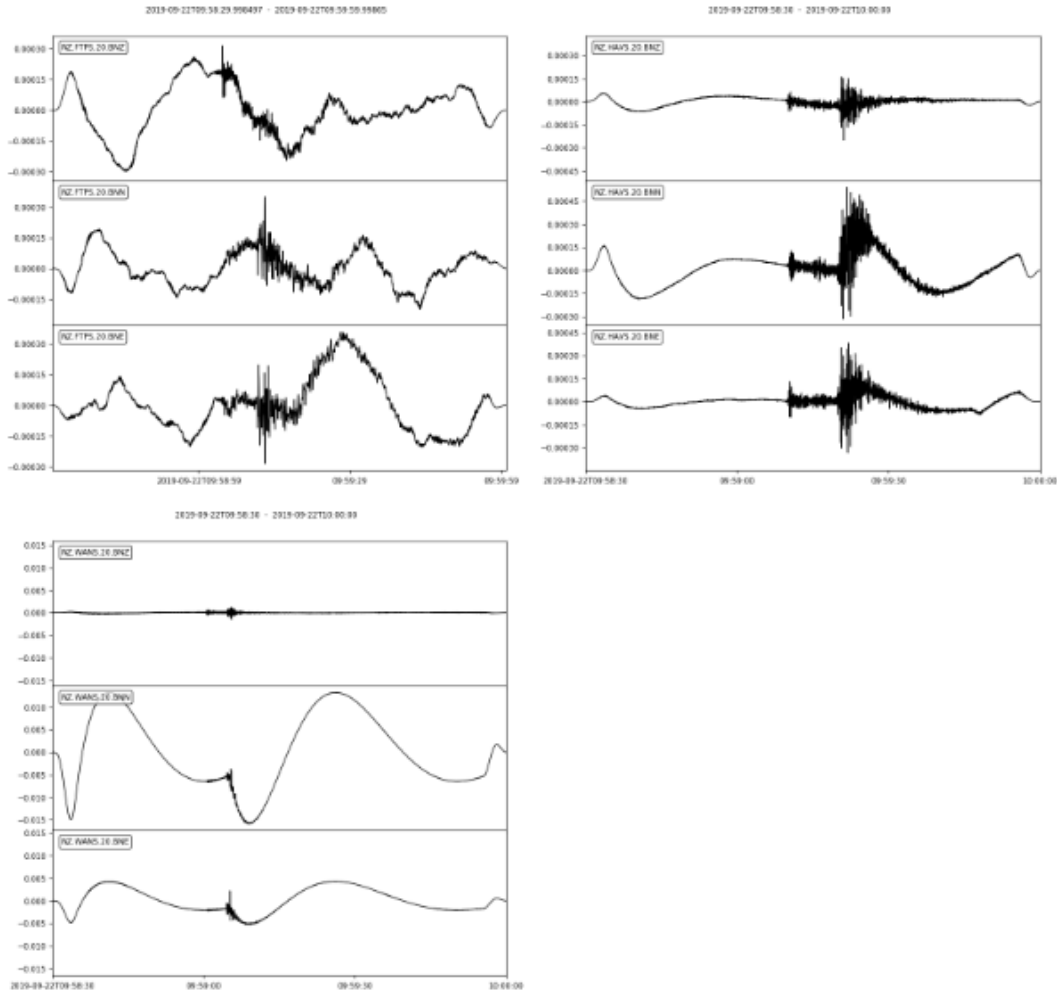
Preliminary Scan Between Events

- `UTCDateTime(2019, 9, 22, 22, 2, 36, 745000)`
- `UTCDateTime(2019, 9, 25, 1, 2, 16, 565000)`
- `UTCDateTime(2019, 9, 25, 19, 2, 2, 155000)`
- `UTCDateTime(2019, 9, 28, 1, 2, 27, 355000)`
- `UTCDateTime(2019, 9, 28, 16, 2, 28, 65000)`

- UTCDateTime(2019, 9, 29, 7, 2, 0, 805000)

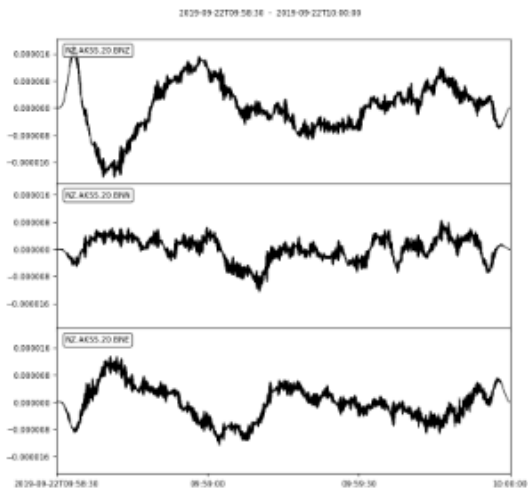
Strange Waveforms

Event 1, station in CSV

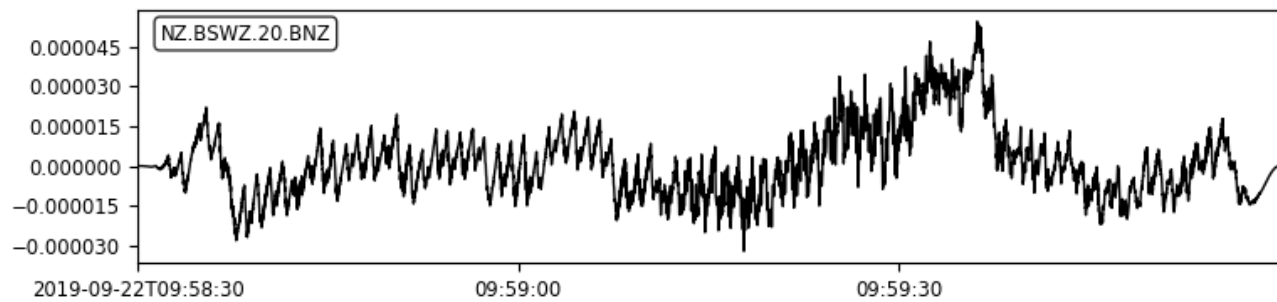


Event 1, station not in CSV

background only (far), only Z component available



2019-09-22T09:58:29.999988 - 2019-09-22T09:59:59.999988



Event 2, station in CSV

Extremely small amplitude relative to background LF

