

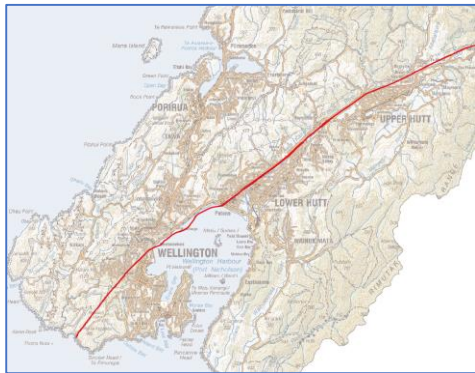


Scenario Event

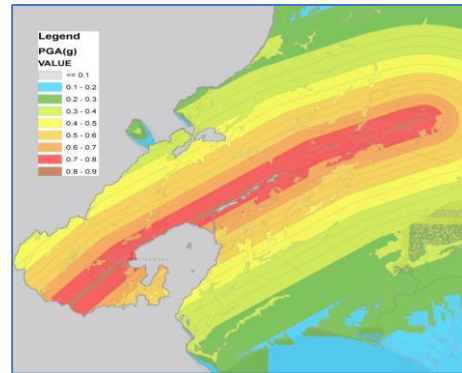


- M7.5 Earthquake on the Wellington Fault
- ~1 in 1000 annual likelihood

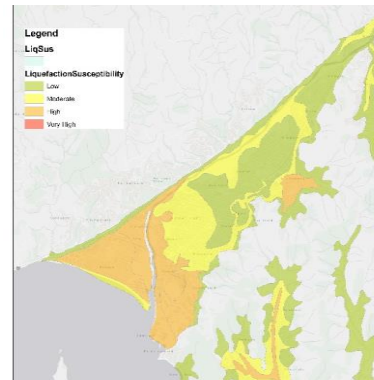
Perils considered



Fault Rupture



Shaking



Liquefaction

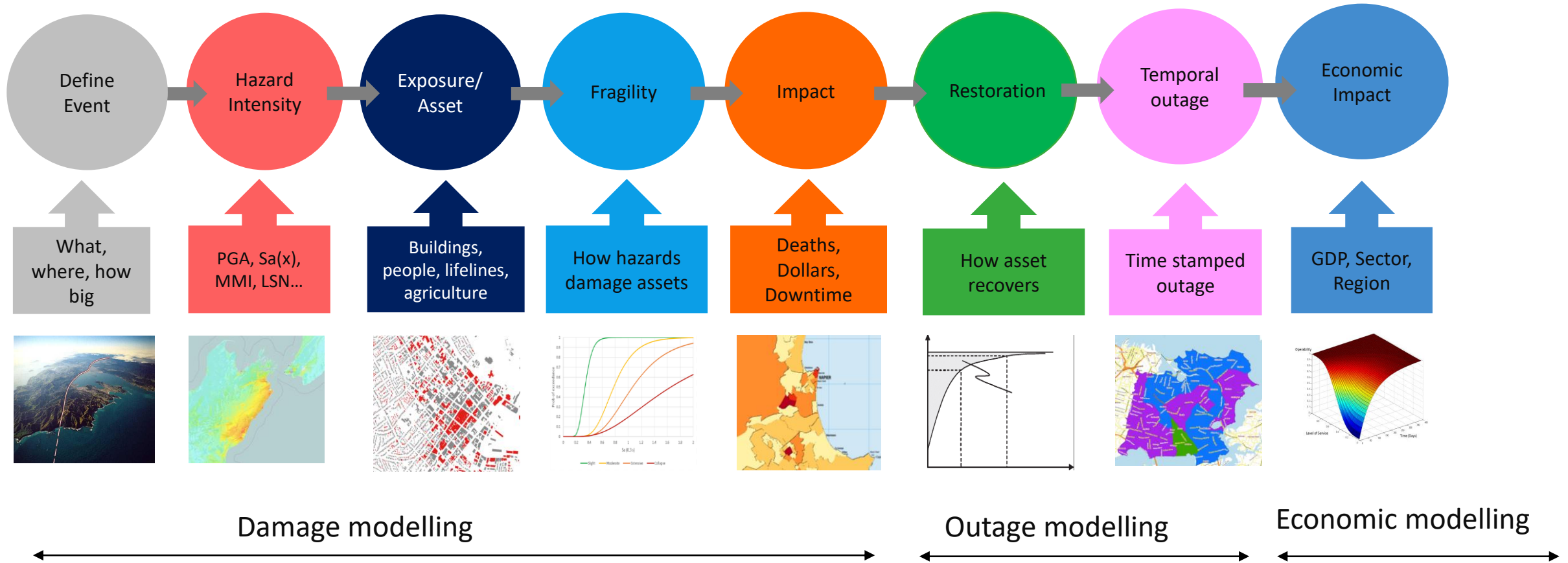


Landslide



Co-seismic
subsidence

Earthquake Impact Model Framework



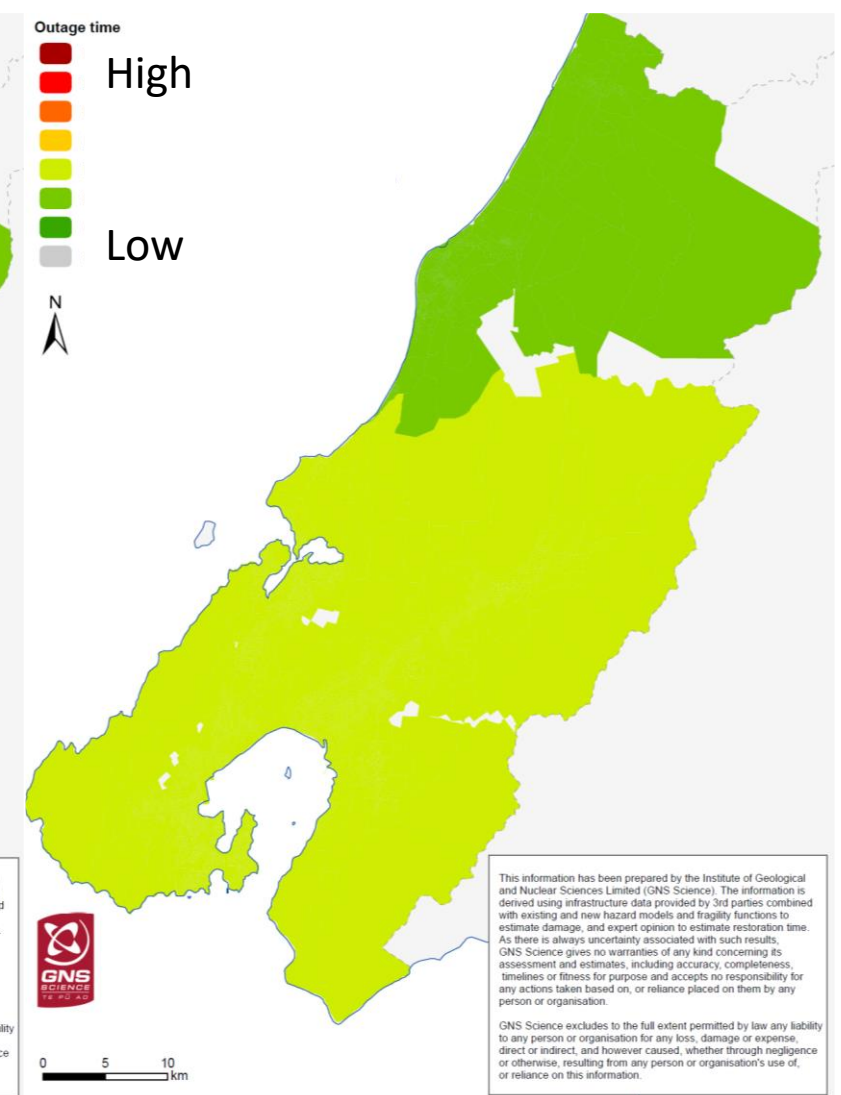
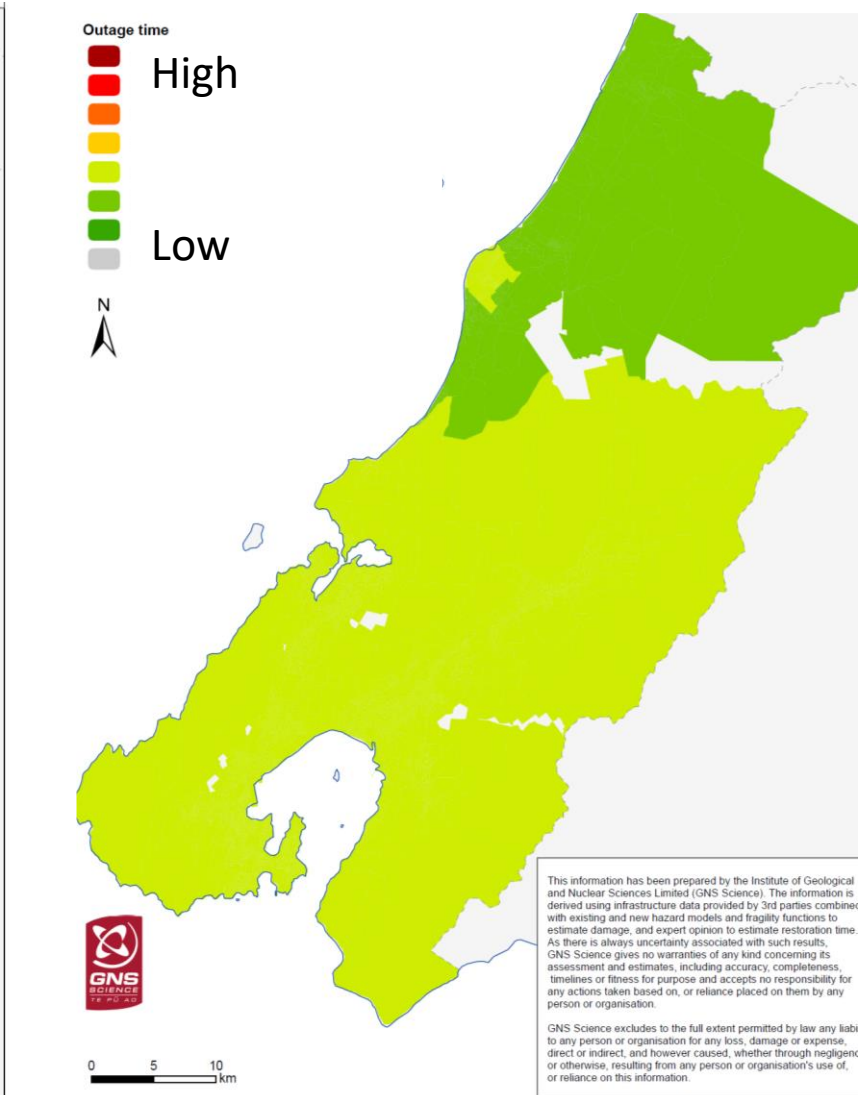
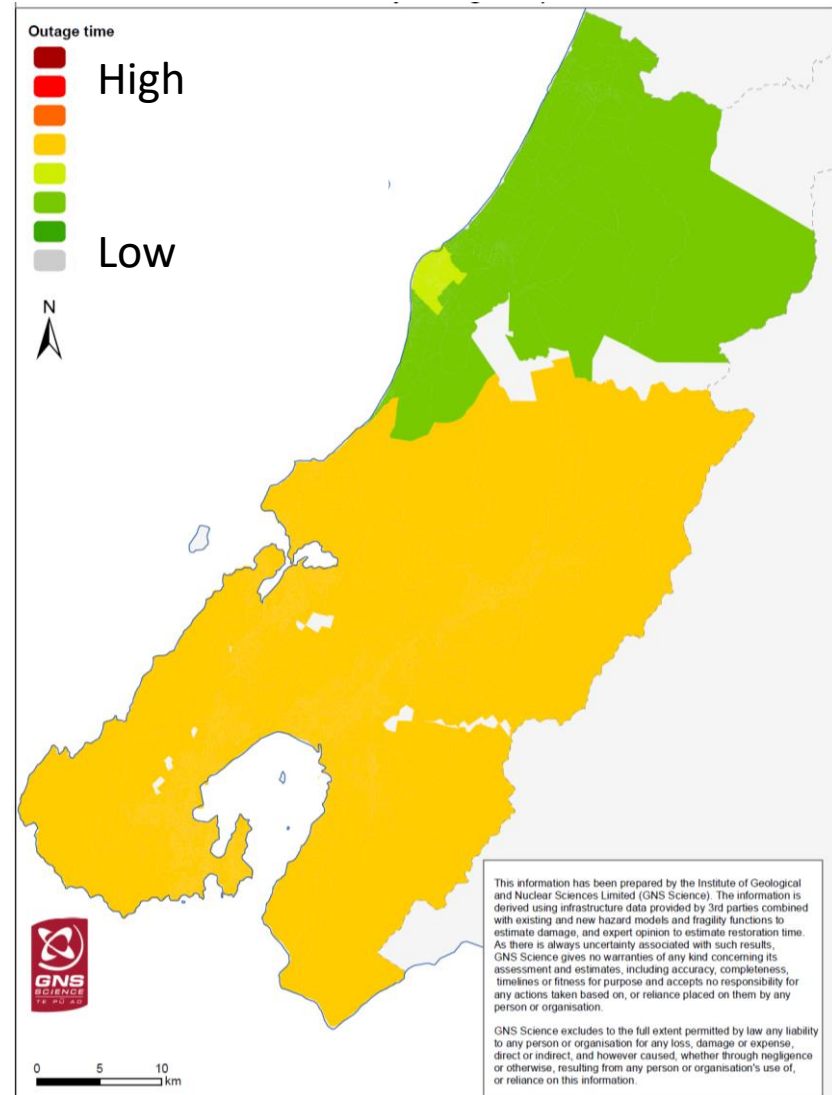
Aspects of the above were informed by data gathered from Canterbury

Electricity Outage

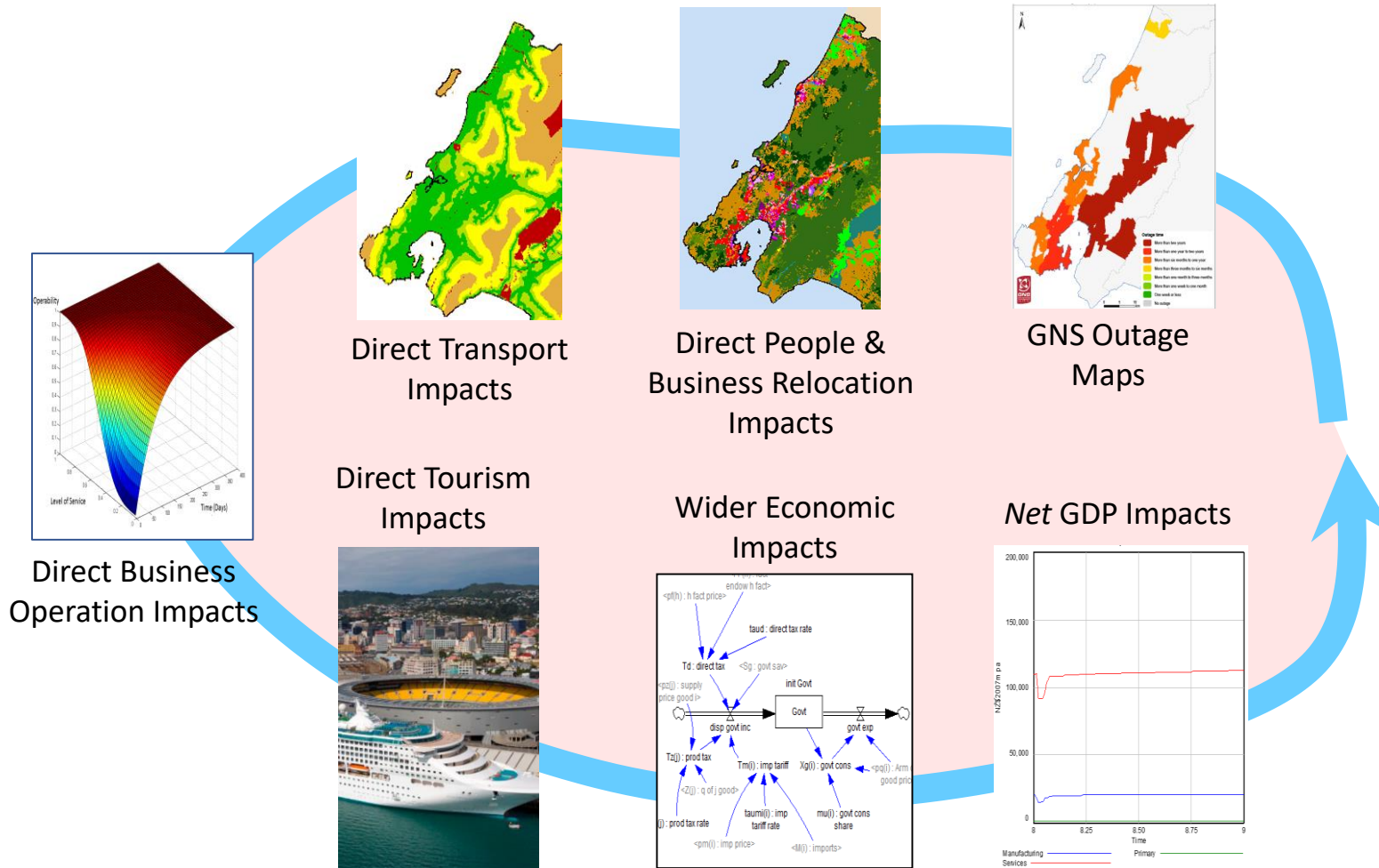
Base Case

Lower Investment

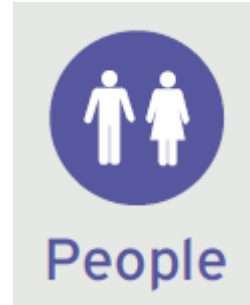
Higher Investment



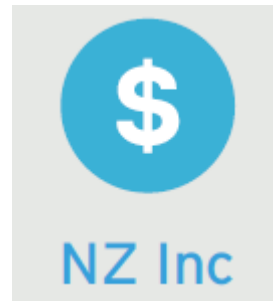
The MERIT Modelling Process



WHAT DOES SUCCESS LOOK LIKE?



Safer People and more Resilient Community



Significantly reduced risk to New Zealand's Economy



Optimised Strategic Lifelines Investment

