

# Developing site-specific high-frequency simulation componentary

Jagdish C. Vyas

Brendon A. Bradley

Hoby N.T. Razafindrakoto

Ethan Thomson

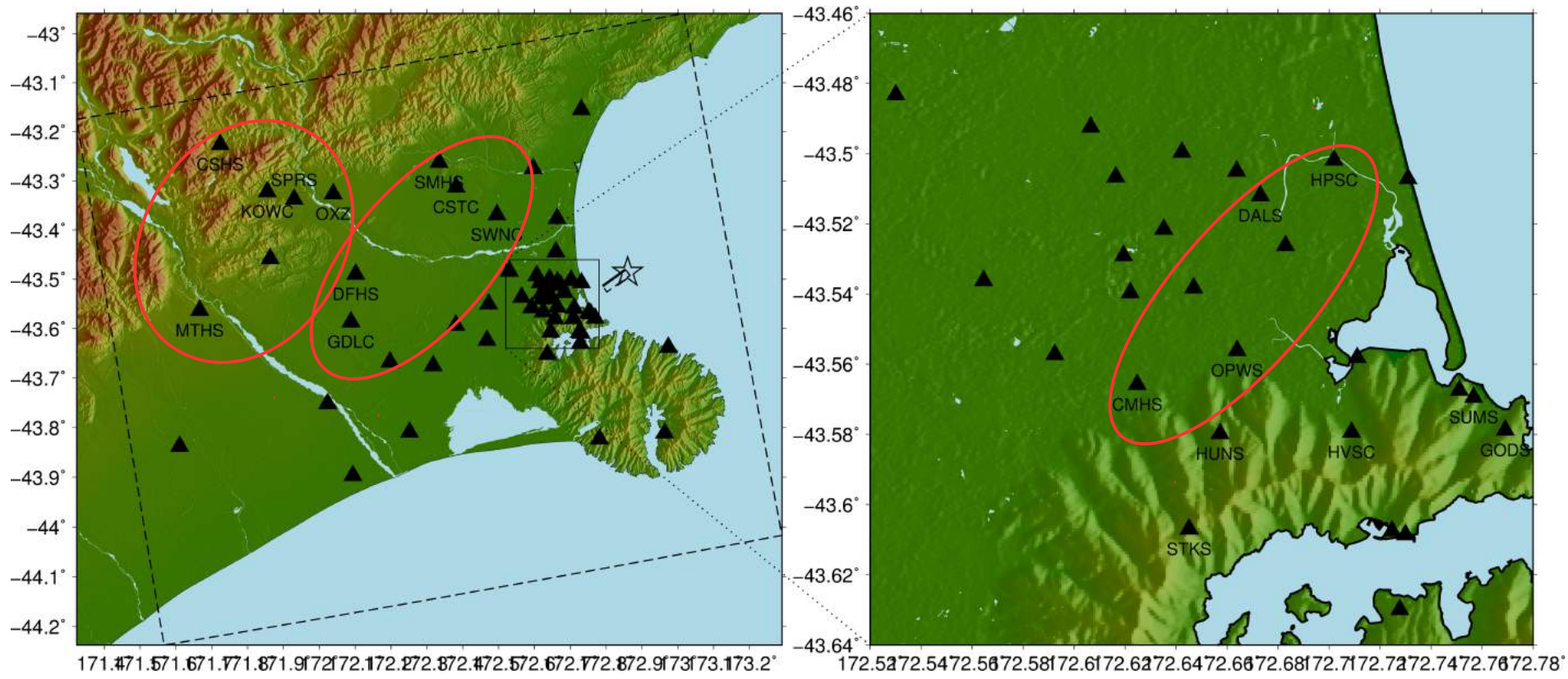
University of Canterbury

# Introduction

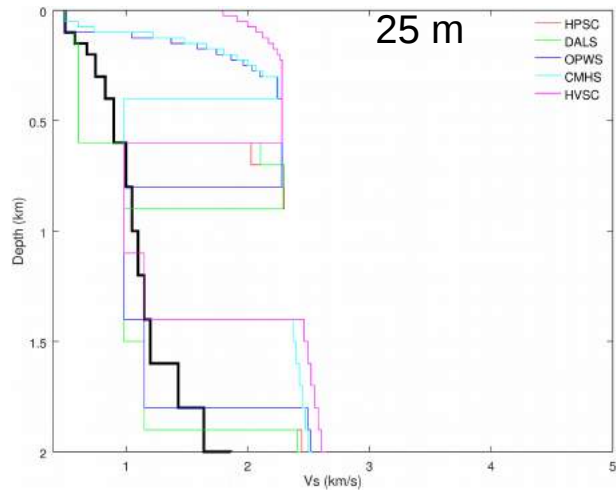
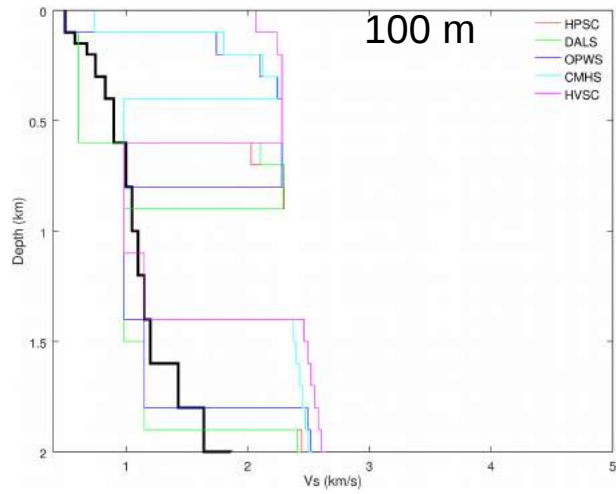
➤ 
$$A(M_0, R, f) = S(M_0, f) * P(R, f) * G(f)$$

[Boore, 2003; Graves and Pitarka, (2010, 2016)]

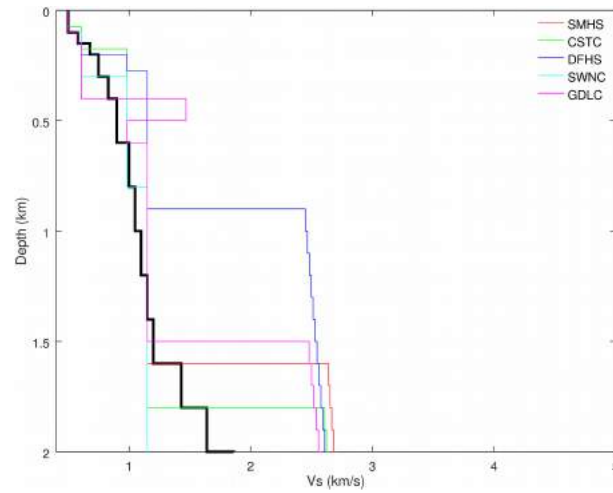
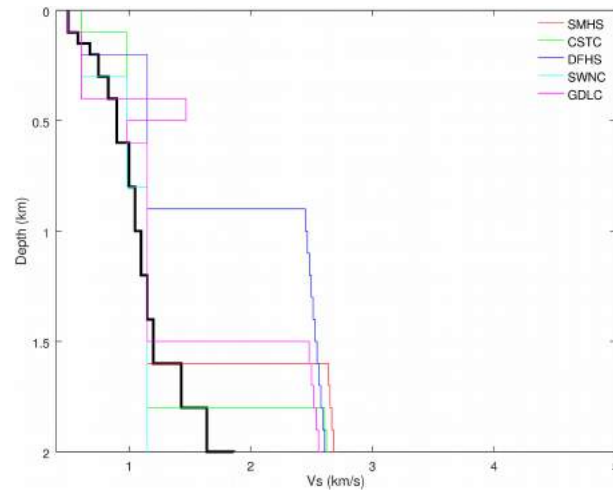
- Use site-specific profiles instead of generic profile.
- Using different profiles affect path and site terms.
- First objective: How site-specific profiles affect site or path or site+path terms and consequently ground-motions.
- Second objective: Apply site-specific method to different earthquakes e.g. 2016 Valentine EQ, 2011 Christchurch EQ, 2010 Darfield EQ.



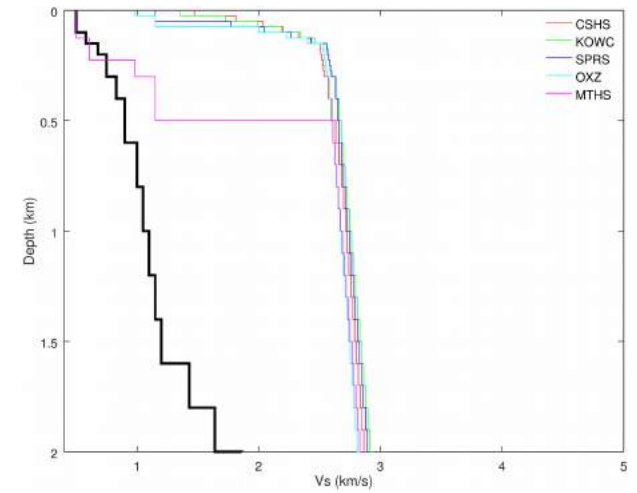
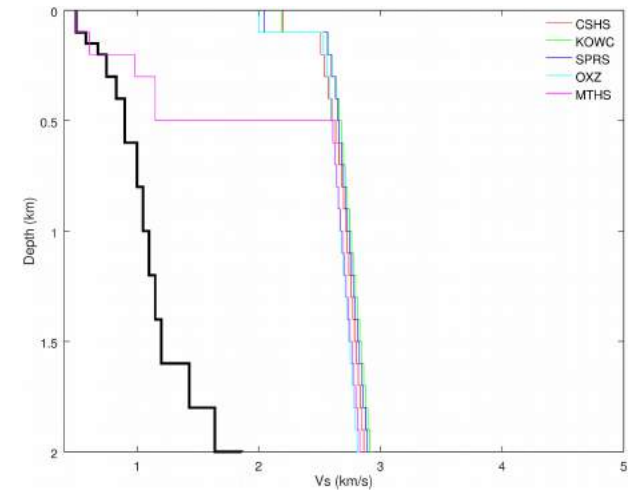
# Port Hill



# Basin



# Canterbury Foot Hill



# Site term

$$G(f) = A(f) * D(f)$$

[Boore, 2003]

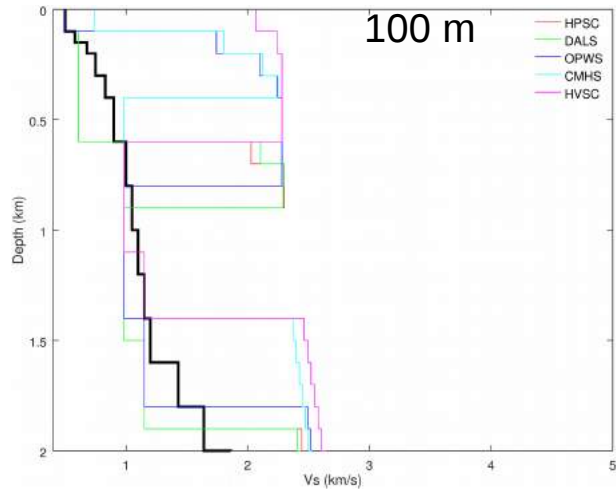
- $A(f)$  is computed using “quarter wavelength theory”.

$A(f)$  = Square root of ratio of source to site impedences.

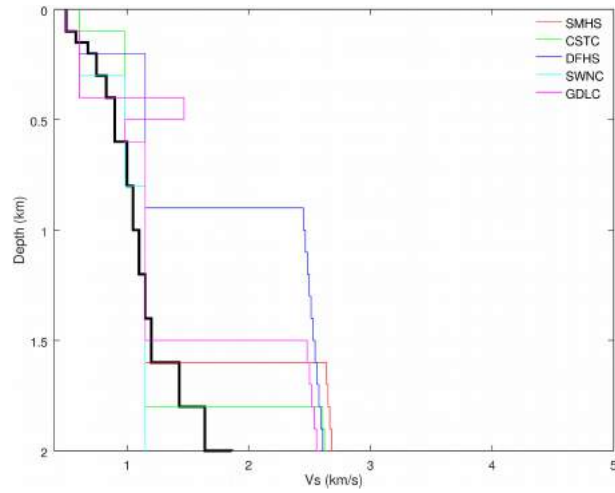
[Boore and Joyner, 1997]

- $D(f) = \exp(-\pi * k * f)$

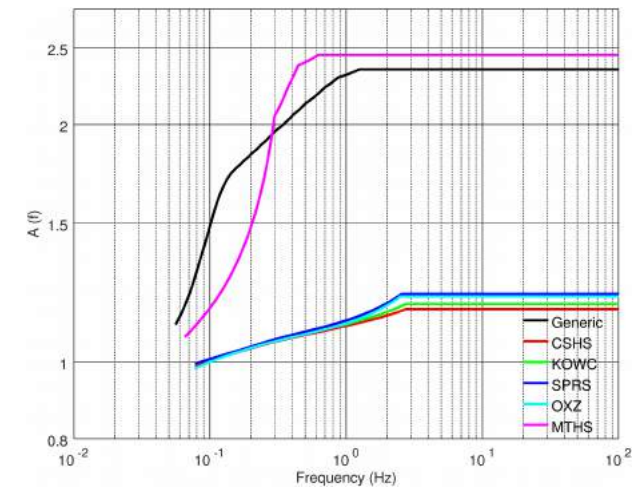
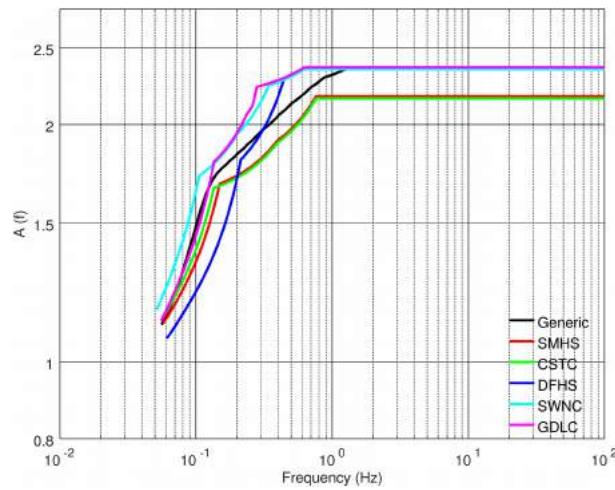
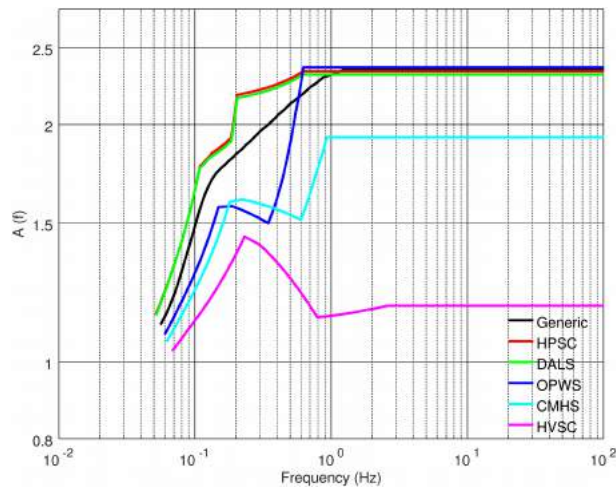
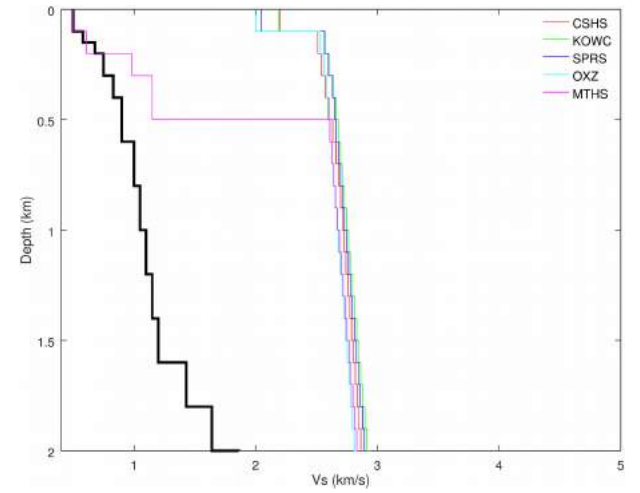
# Port Hill



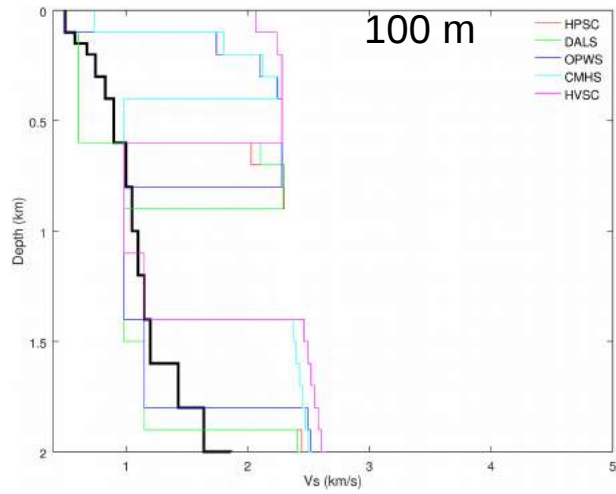
# Basin



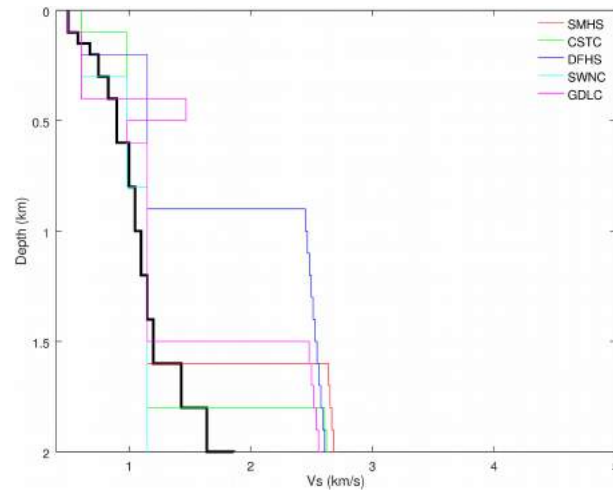
# Canterbury Foot Hill



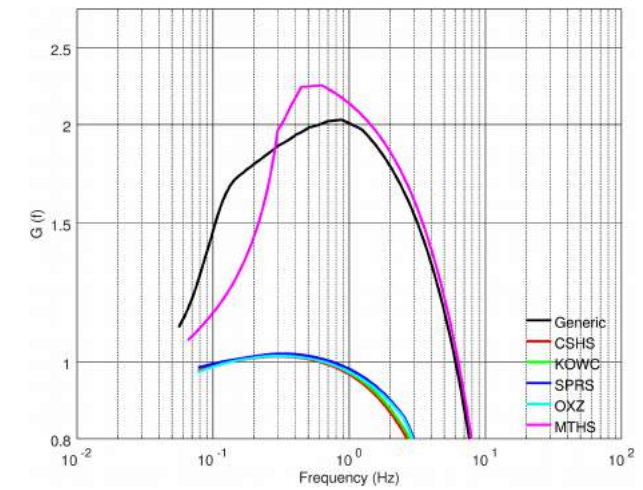
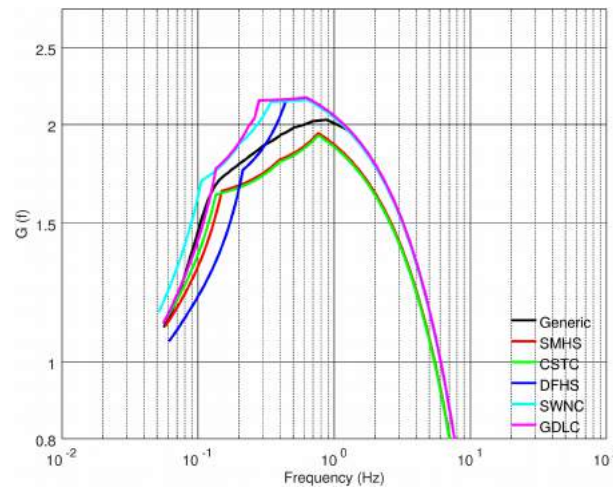
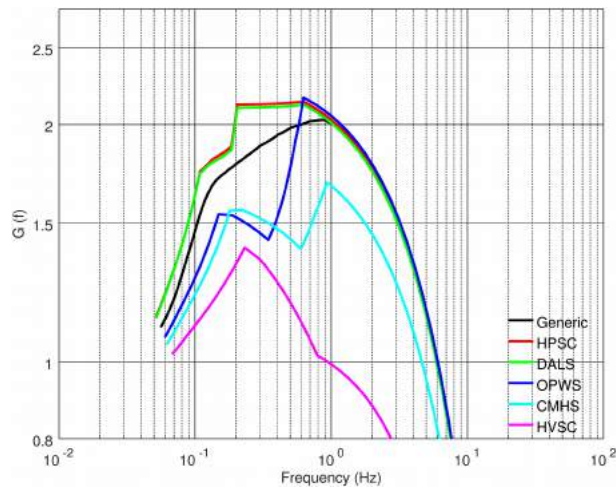
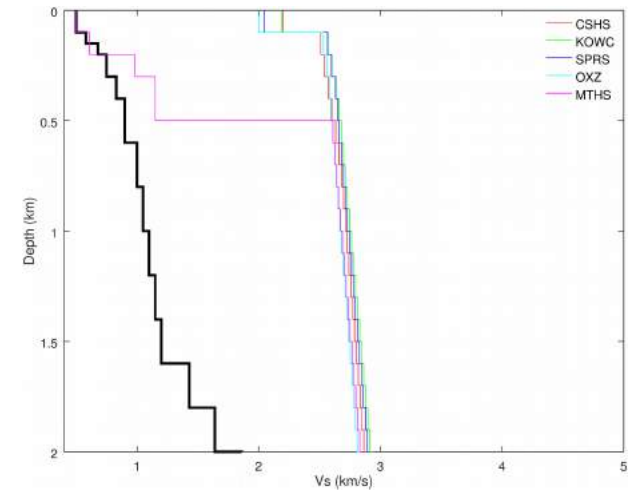
# Port Hill



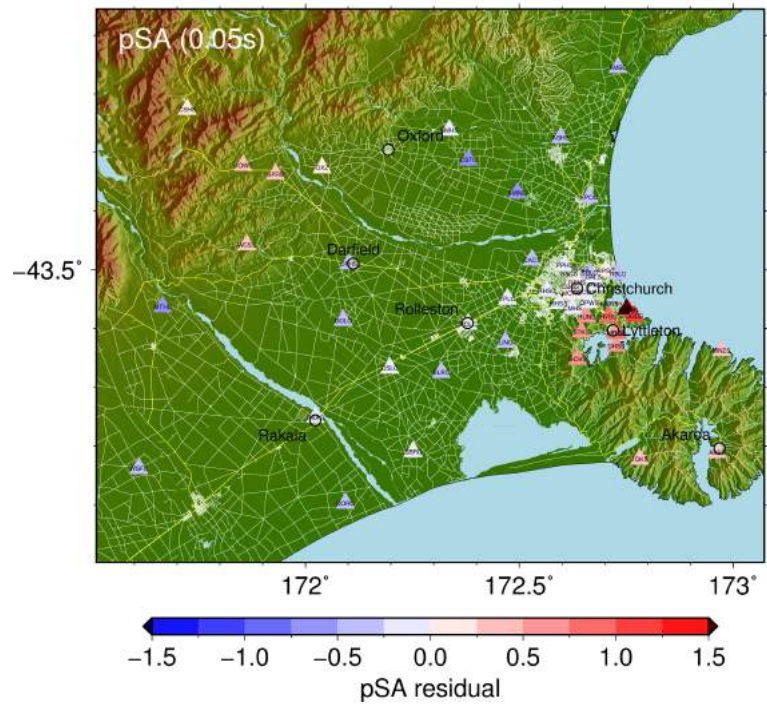
# Basin



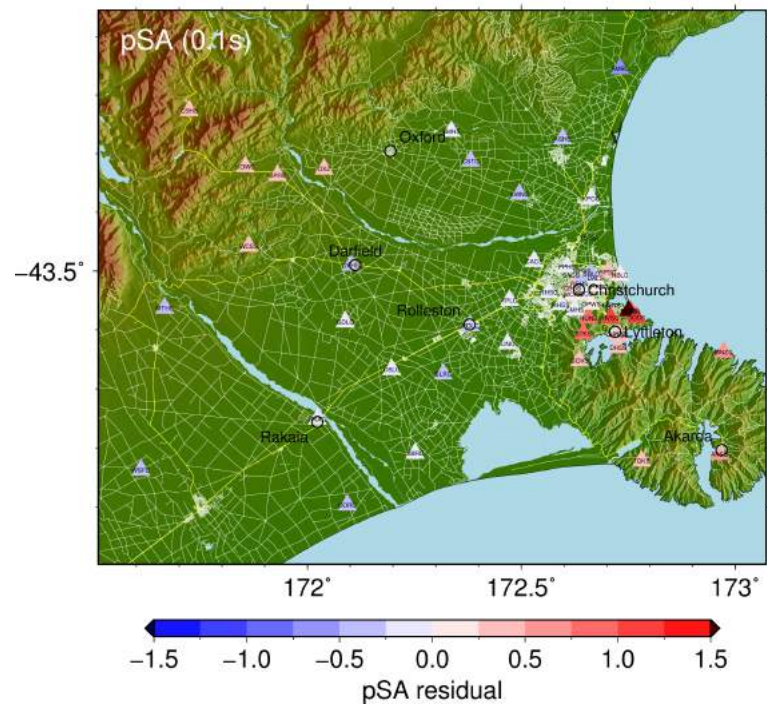
# Canterbury Foot Hill



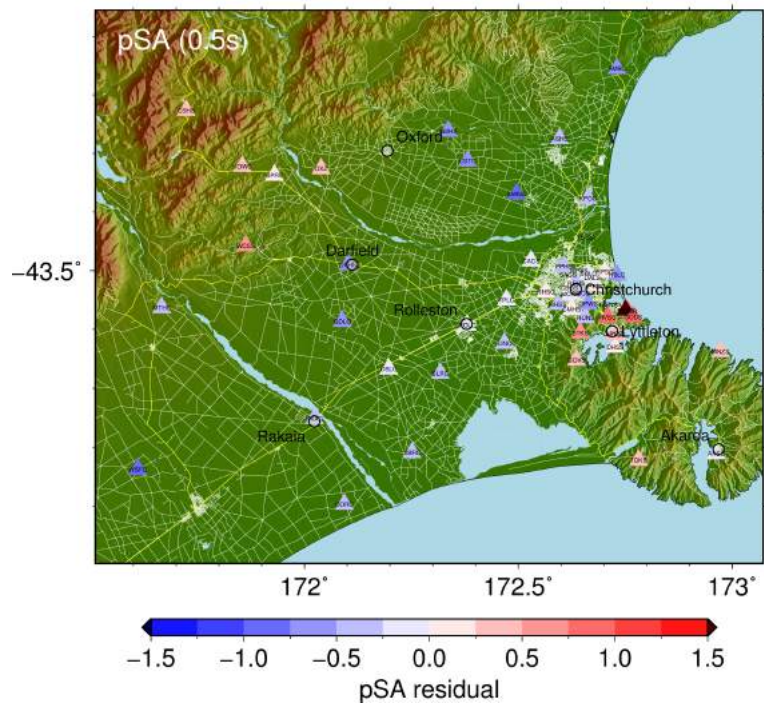
### Residual Plot



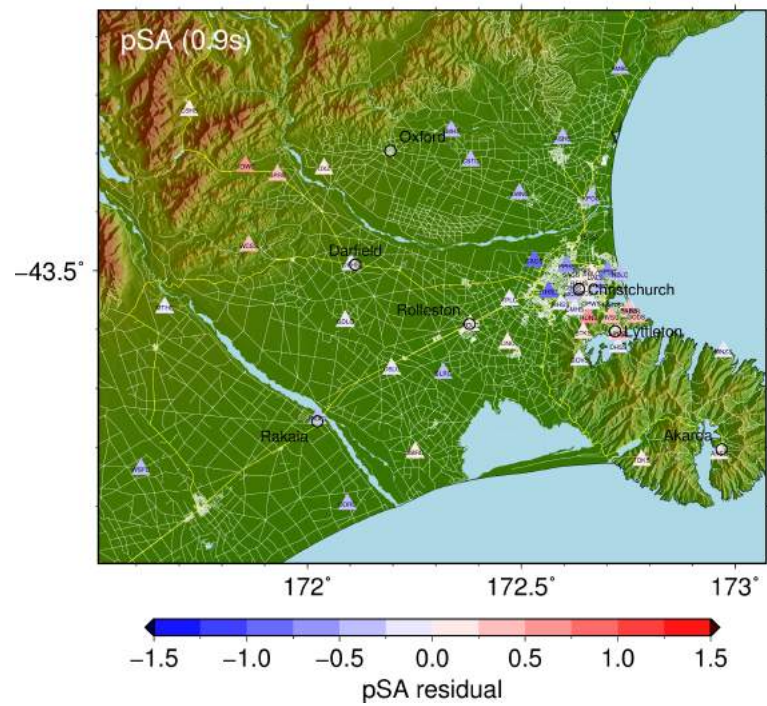
### Residual Plot



### Residual Plot

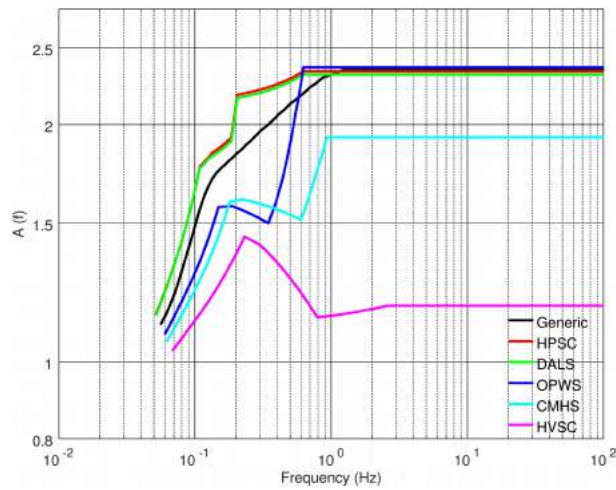
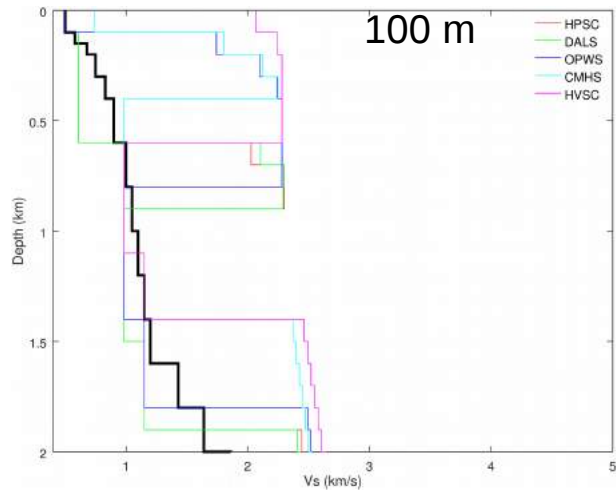


### Residual Plot

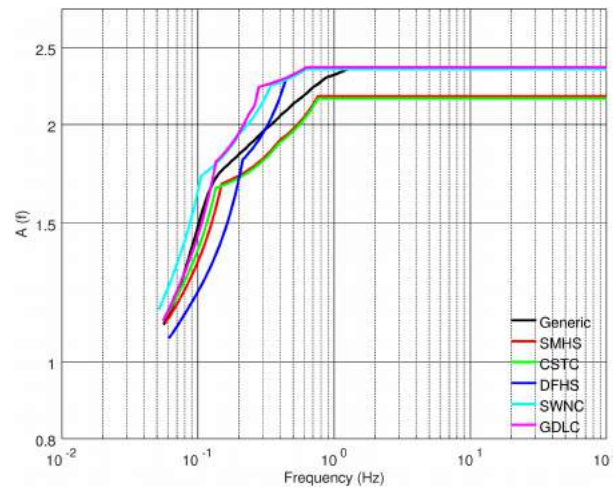
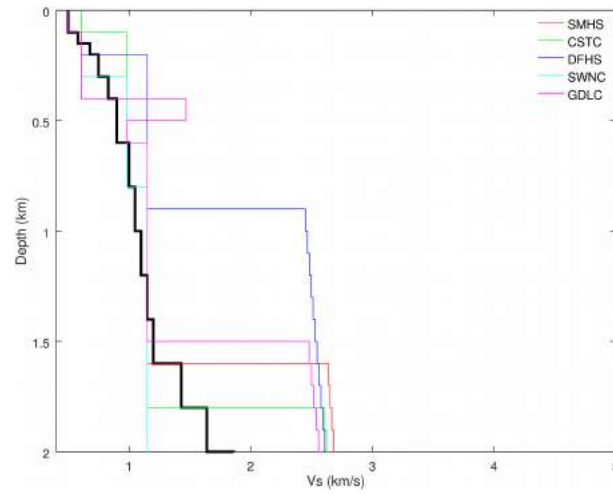




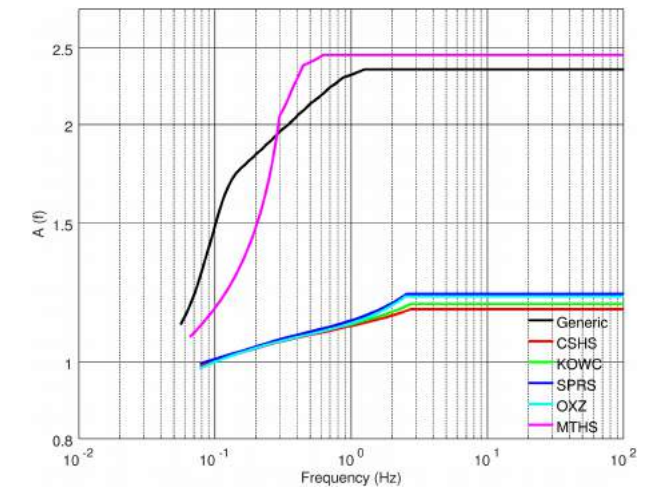
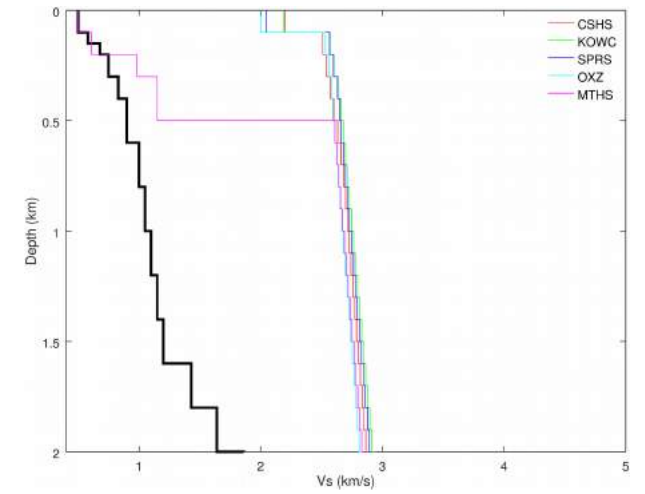
# Port Hill



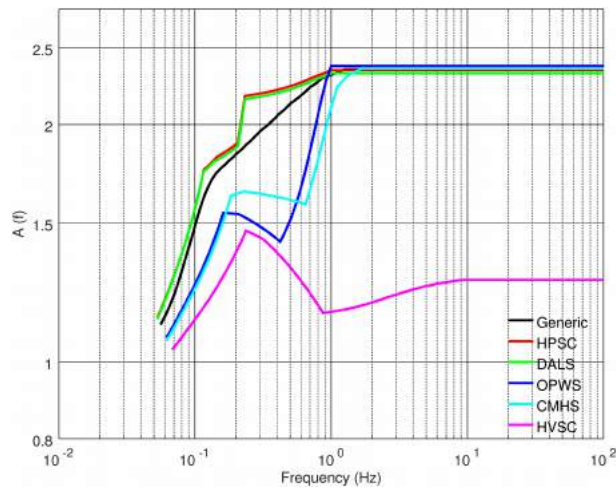
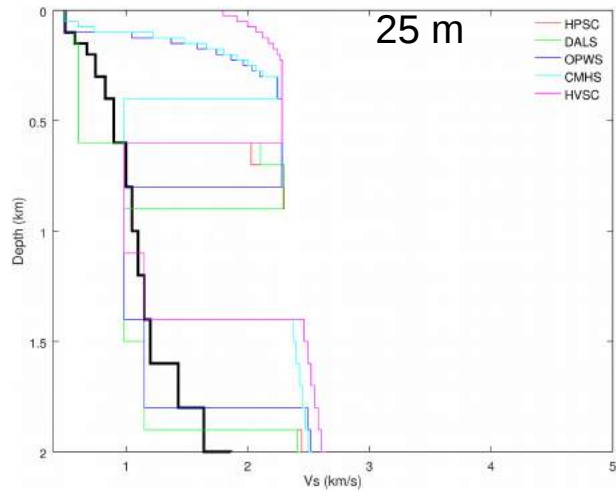
# Basin



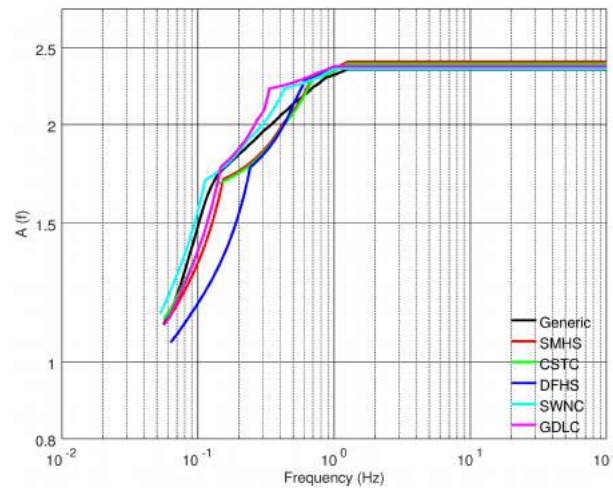
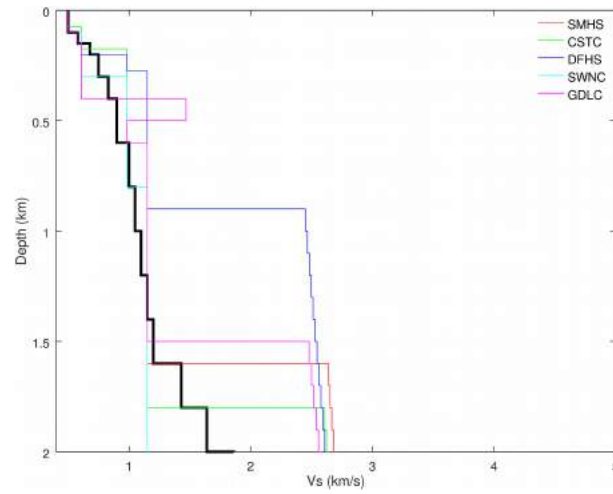
# Canterbury Foot Hill



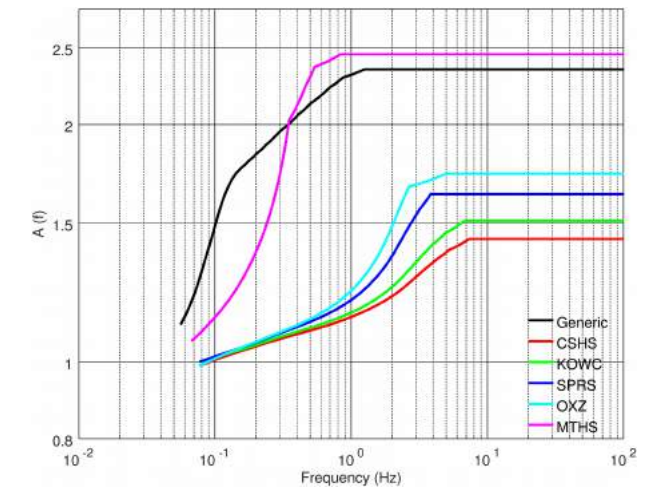
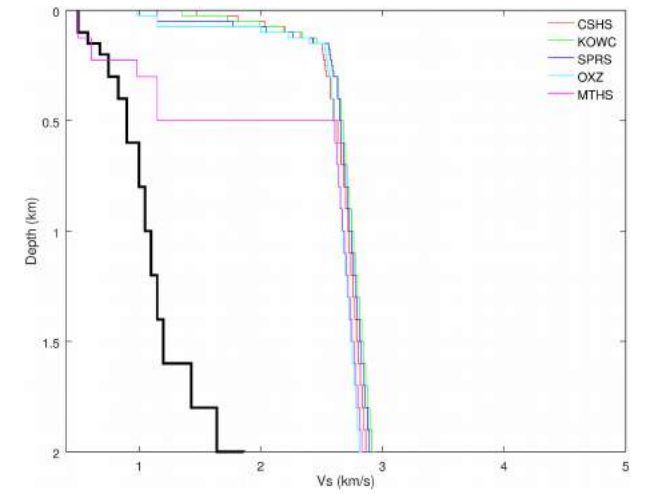
# Port Hill



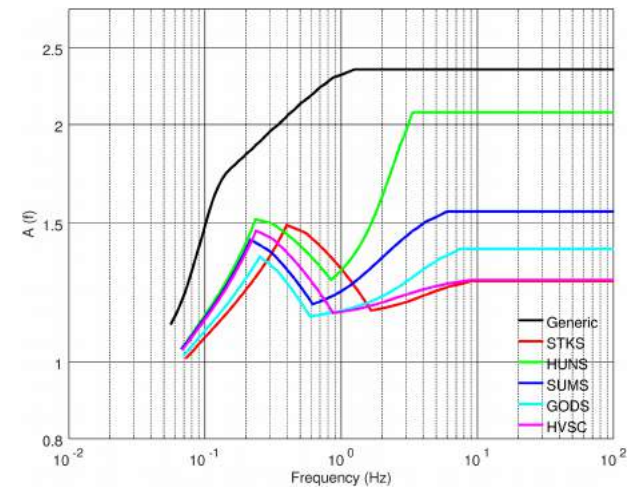
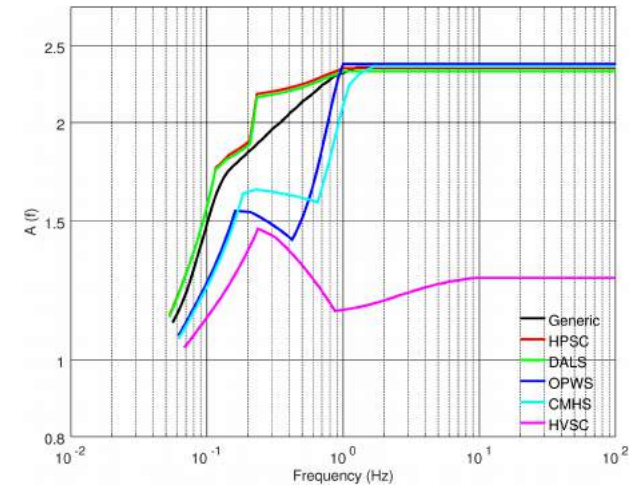
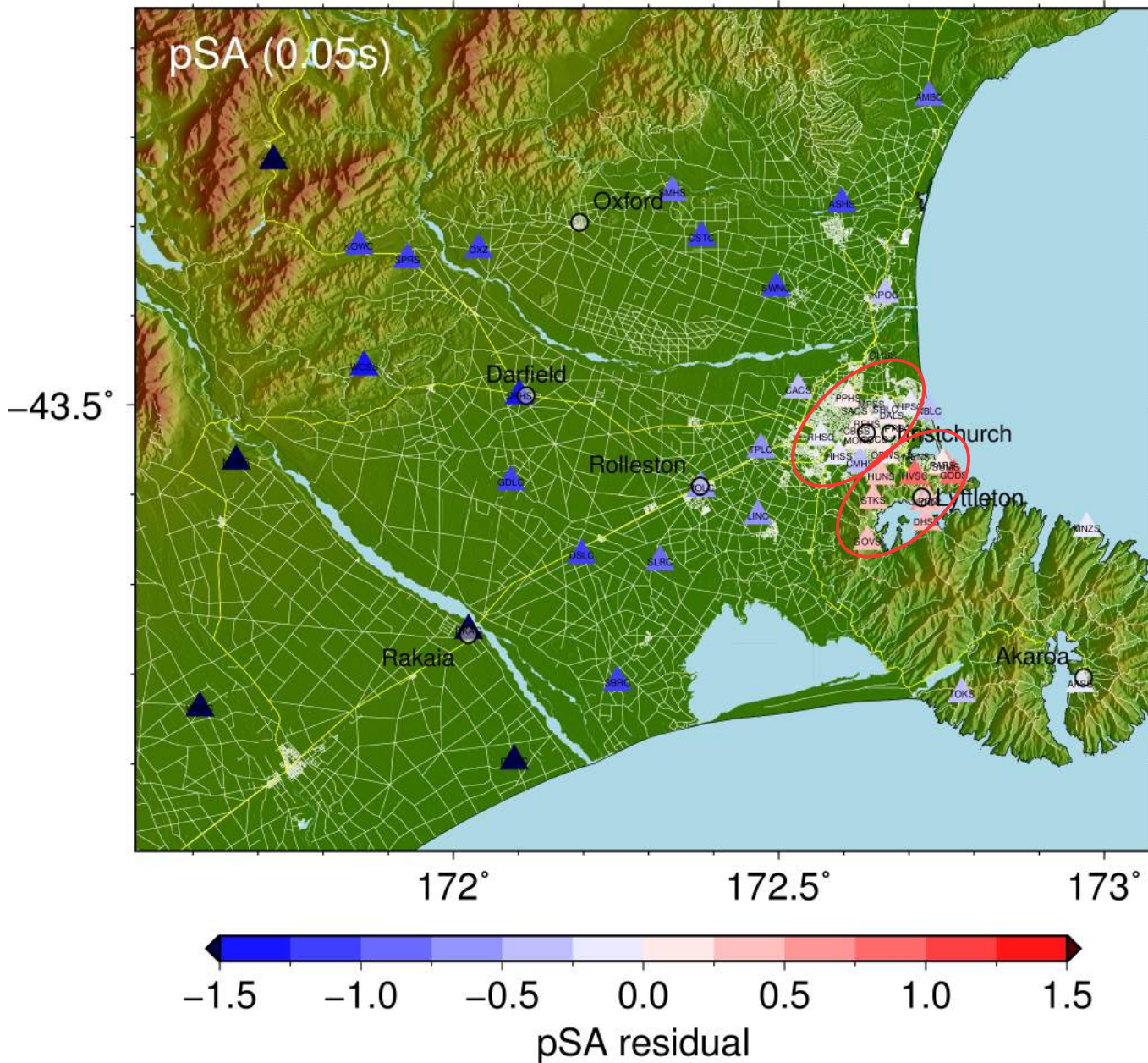
# Basin



# Canterbury Foot Hill



# Residual Plot



- Summary:
  - We understand/evaluate how the different 1D velocity profiles affect the site term and consequently ground-motions.
  - Velocity variations in top 300 to 500 m depth significantly affects the site amplification/term (depicts the importance of weathering function).
  
- Future work:
  - Need to better understand combined path and site components.
  - Apply to different earthquakes to show/check the improvement in ground-motion estimation.

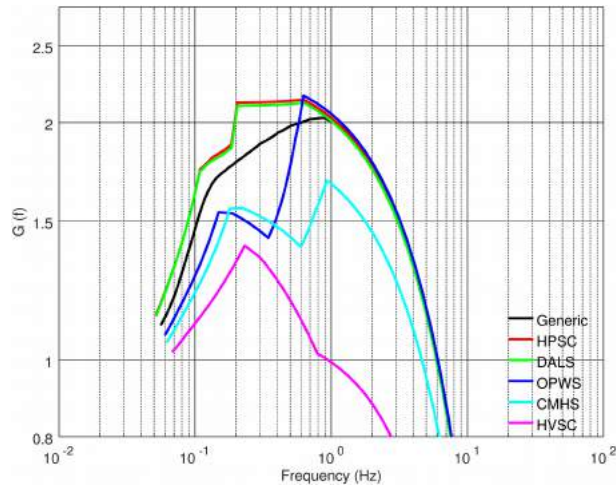
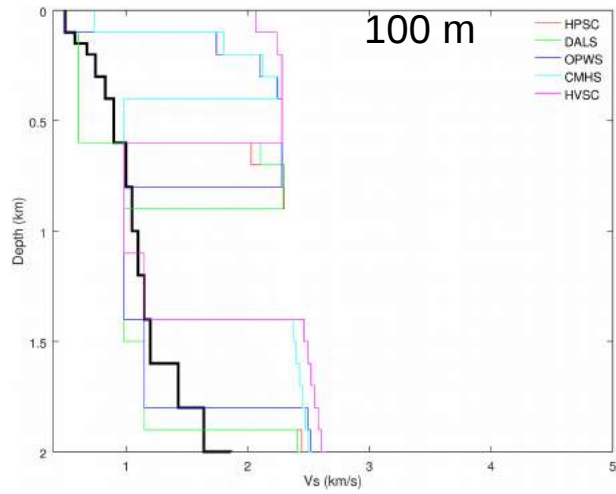
Thanks ....

Acknowledgements: Thanks to Sung, Robin and Karim for several fruitful discussion. 12

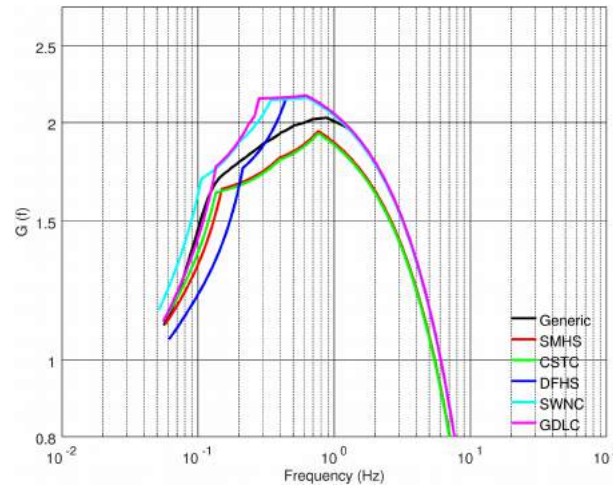
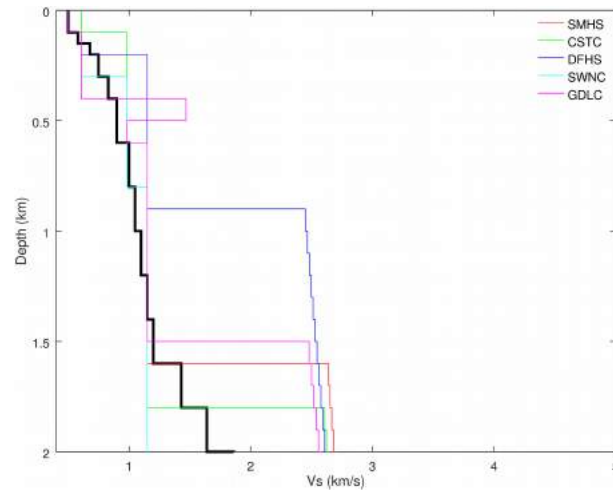




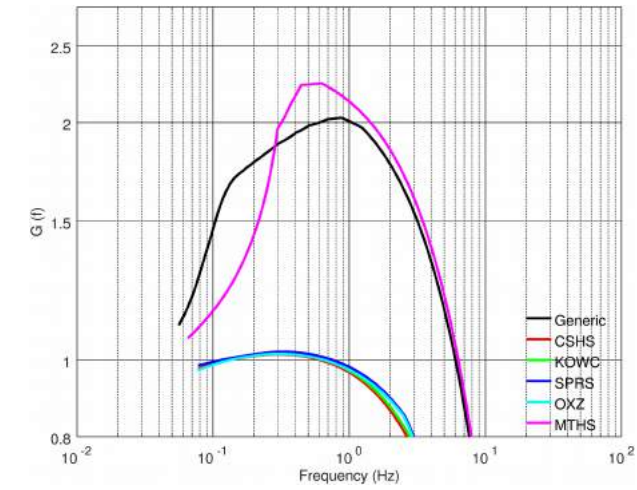
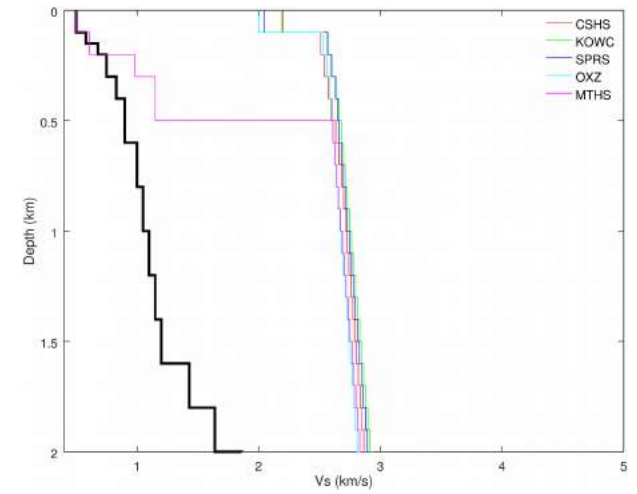
# Port Hill



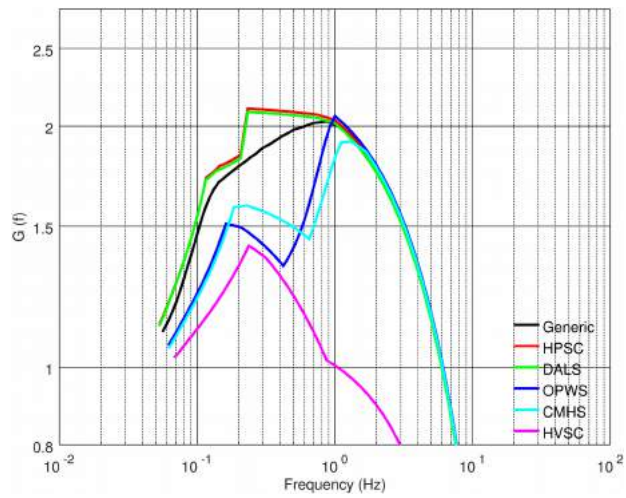
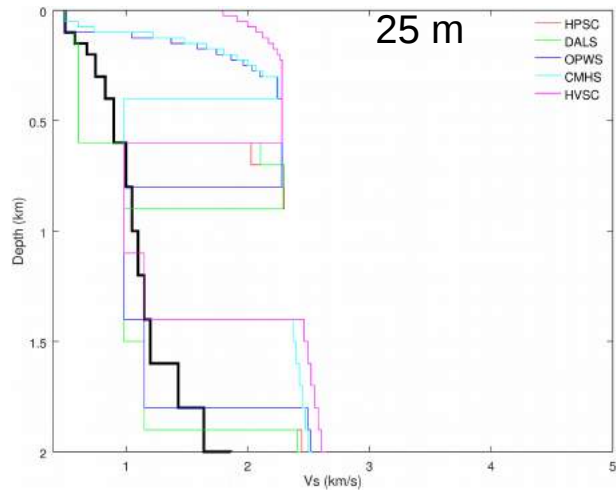
# Basin



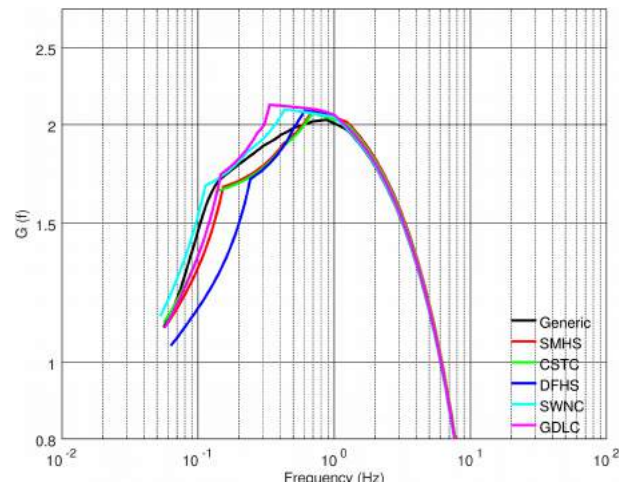
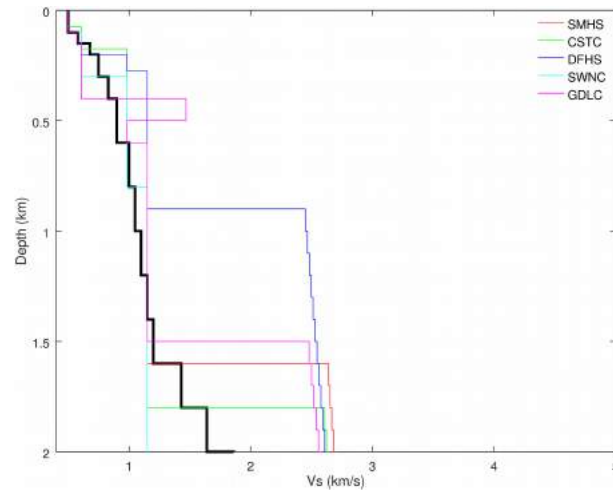
# Canterbury Foot Hill



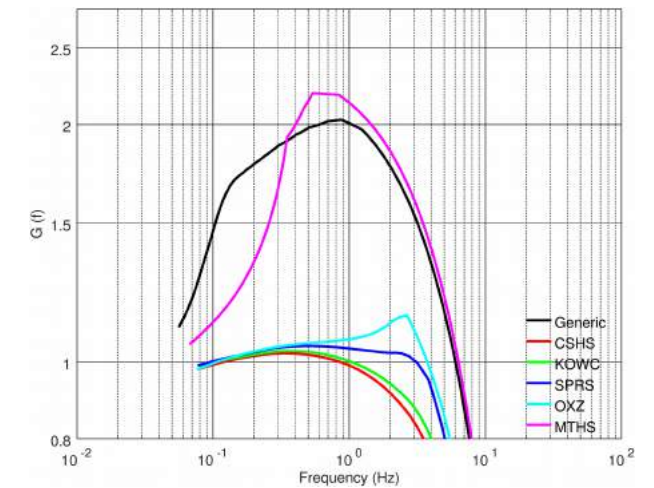
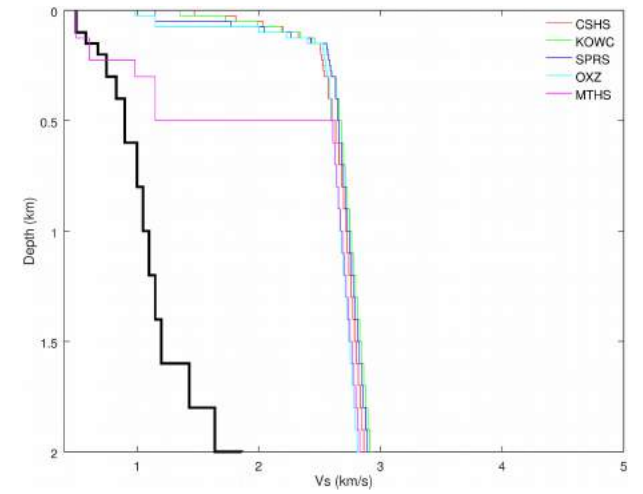
# Port Hill



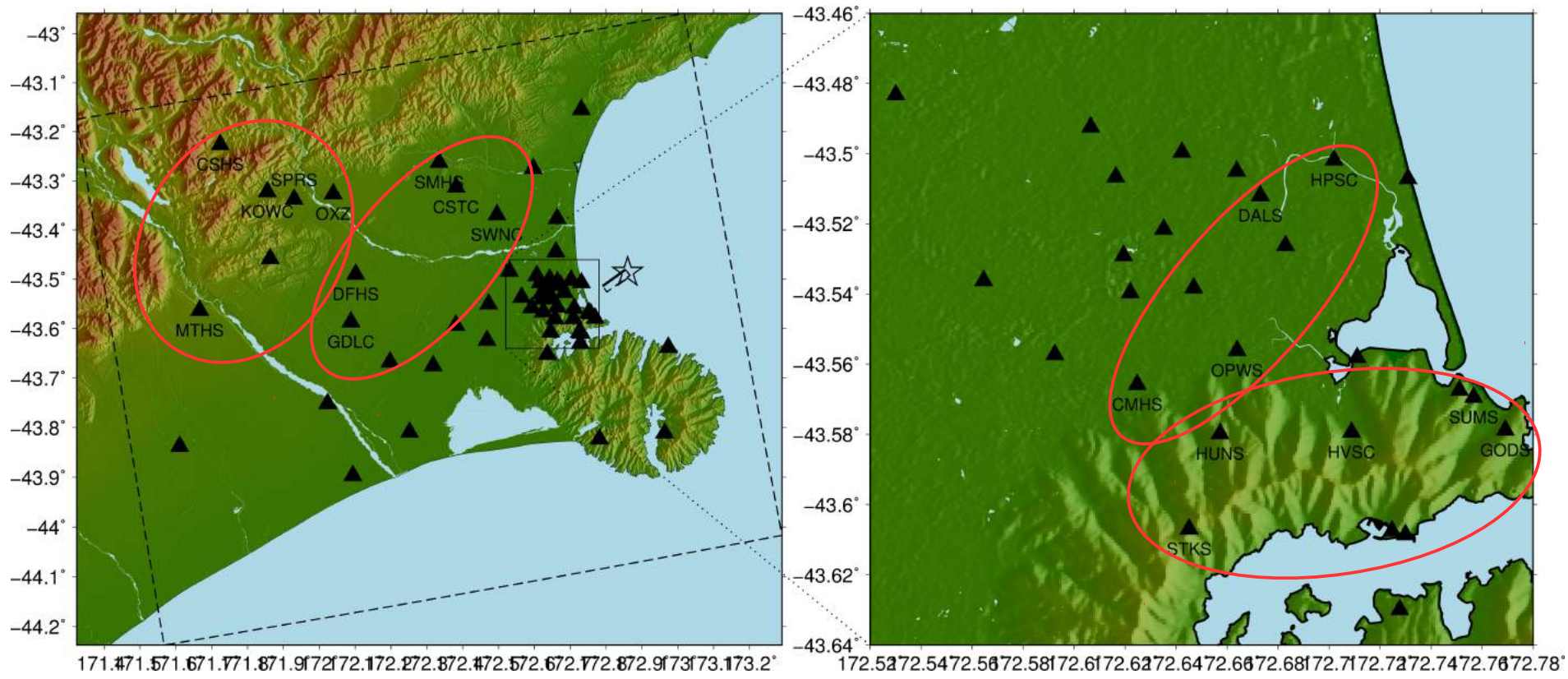
# Basin



# Canterbury Foot Hill

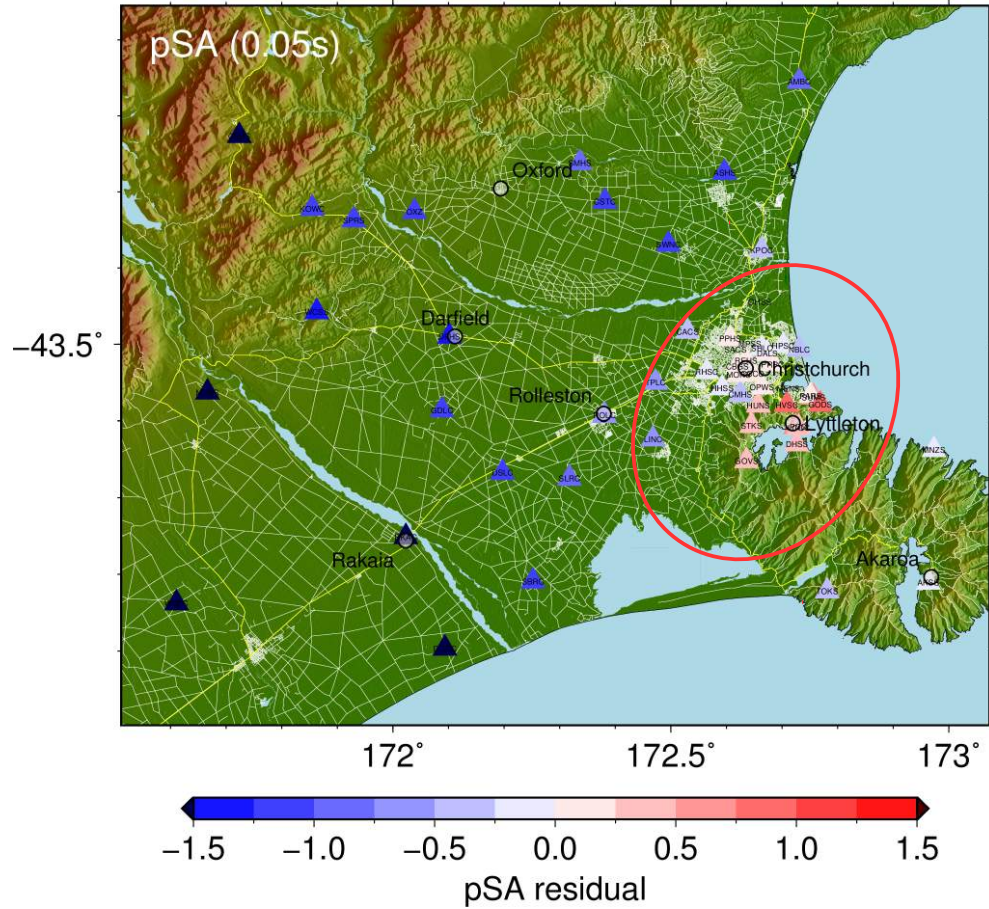






25 m

### Residual Plot



### Residual Plot

