

Ground-motion simulation validation for the 14 February 2016 Valentines Day earthquake

Jagdish C. Vyas

Hoby N.T. Razafindrakoto

Brendon A. Bradley

University of Canterbury

Outline

- Motivation
- Ground-motion recordings
- Broadband simulations
- Validation of numerical modeling
- Introduction to site-specific method (work in progress)
- Key findings and future work

Outline

- **Motivation**
- Ground-motion recordings
- Broadband simulations
- Validation of numerical modeling
- Introduction to site-specific method (work in progress)
- Key findings and future work

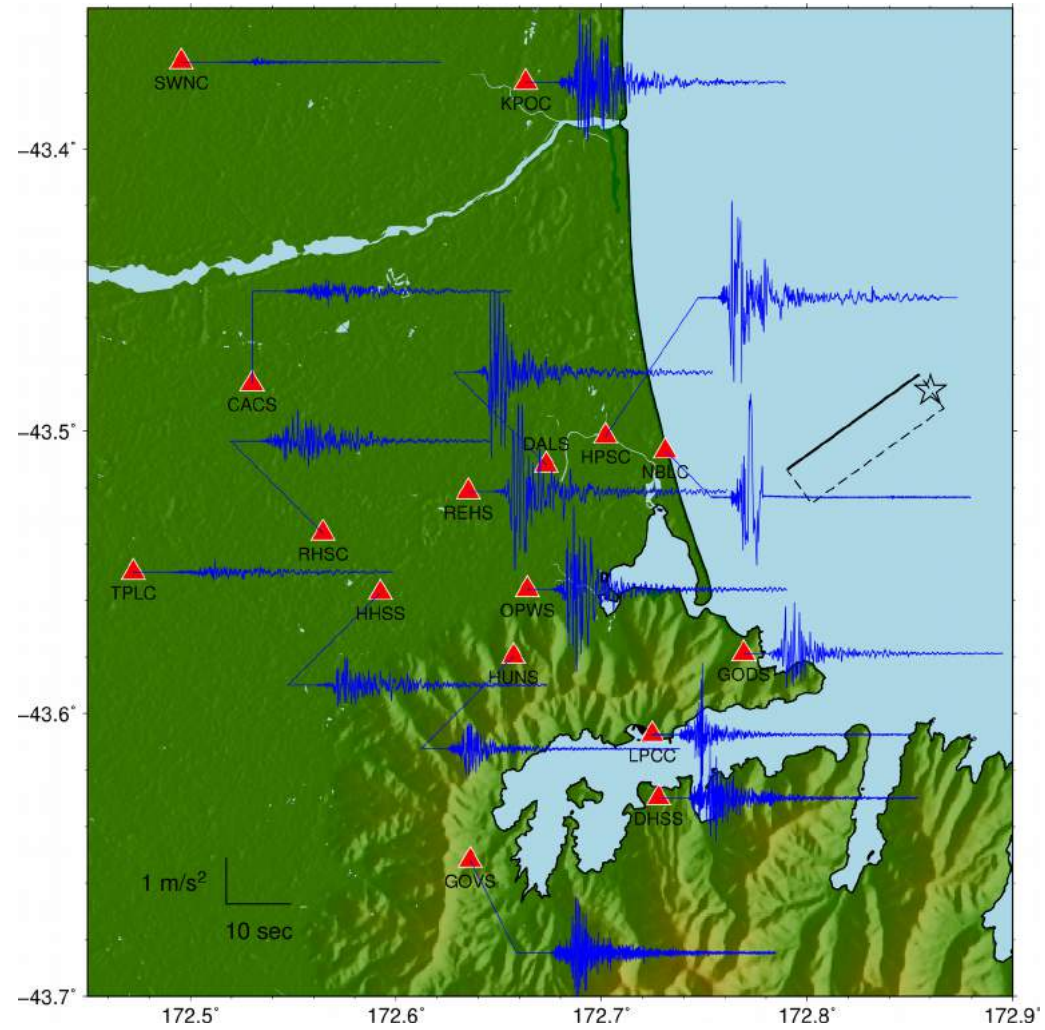
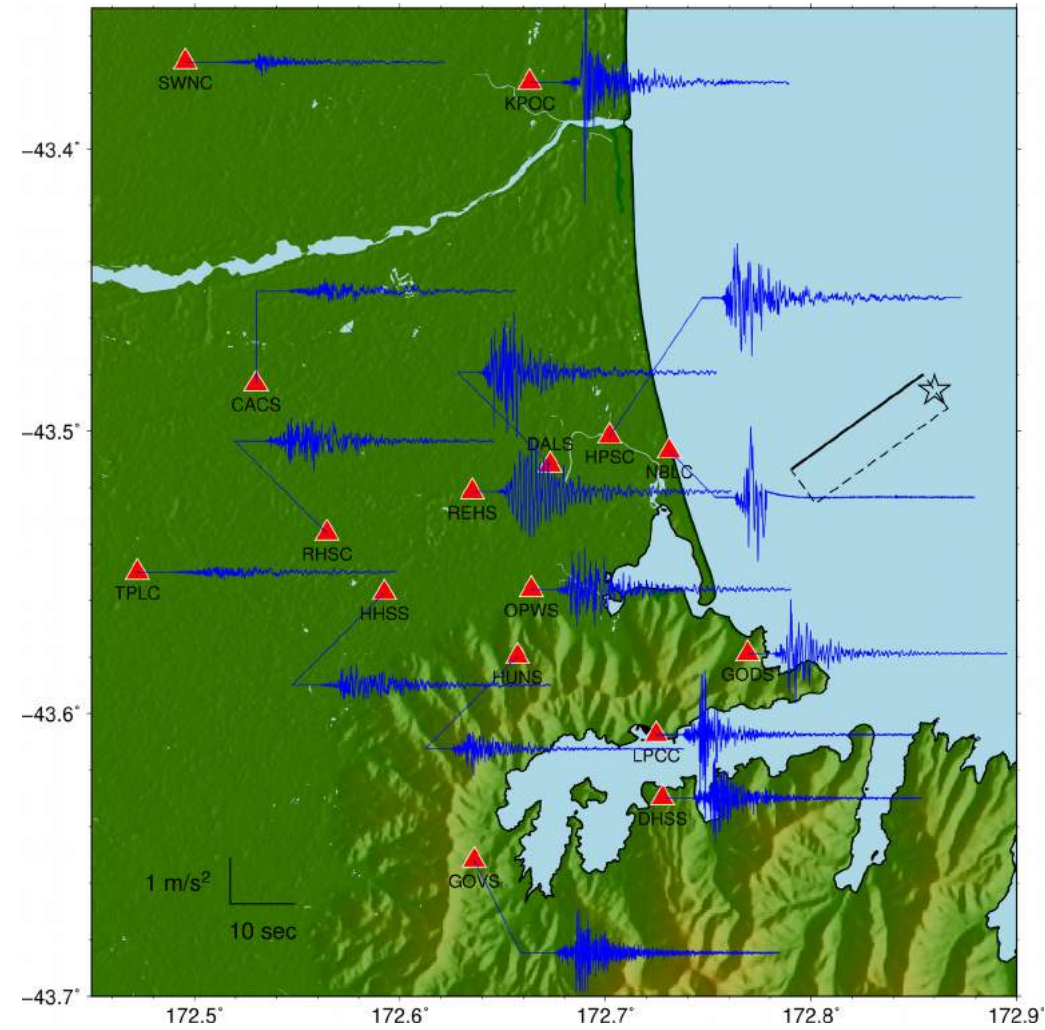
- Part of the Canterbury 2010-2011 earthquake sequence
- Initial/preliminary source model (Kaiser et. al., 2016)
- Liquefaction at some sites (Bucci et. al., 2017; Kaiser et. al., 2016)
- However, the ground-motions are poorly understood.....
- **Objectives:**
 - Analyze observed data (directivity, basin effects, liquefaction)
 - Additional earthquake for simulation validation exercise
 - Develop site specific HF computation method

Outline

- Motivation
- **Ground-motion recordings**
- Broadband simulations
- Validation of numerical modeling
- Introduction to site-specific method (work in progress)
- Key findings and future work

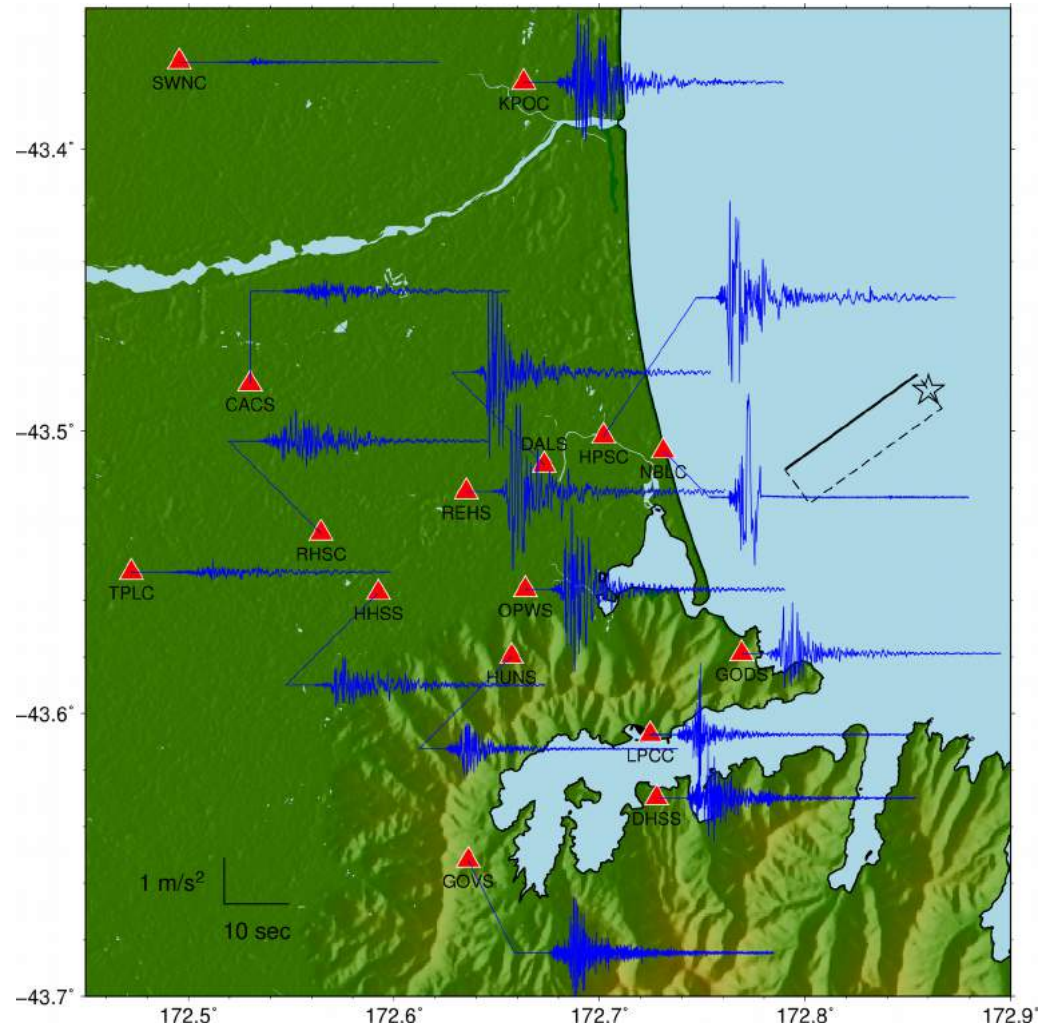
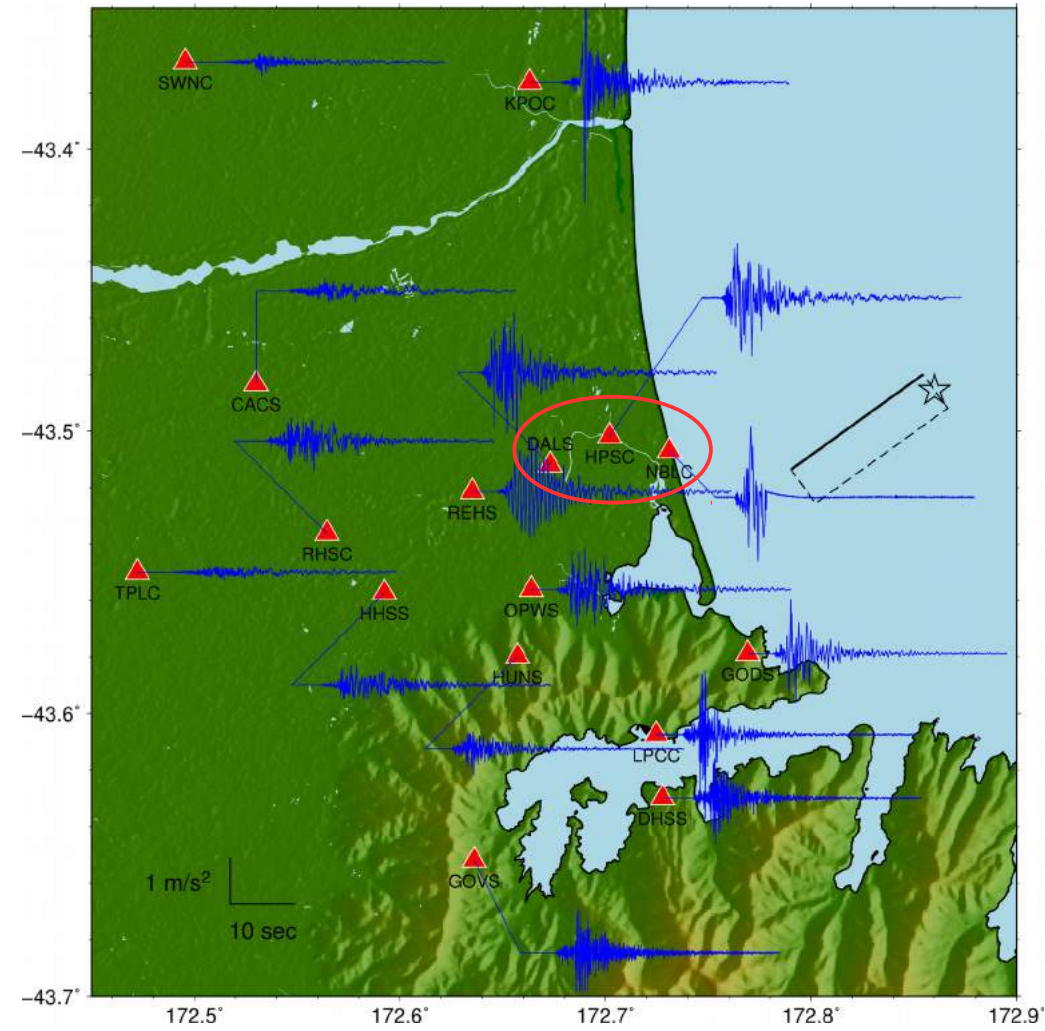
Fault parallel acceleration

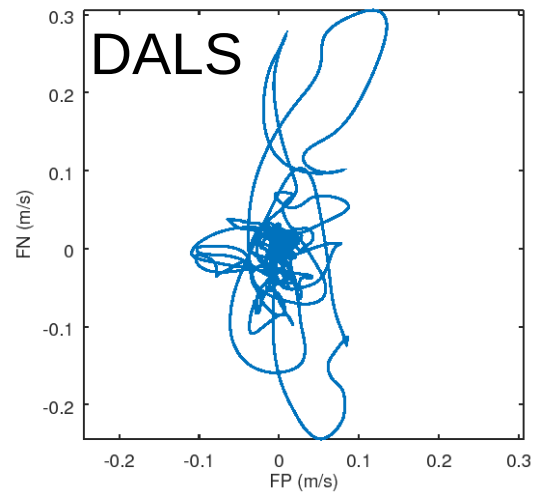
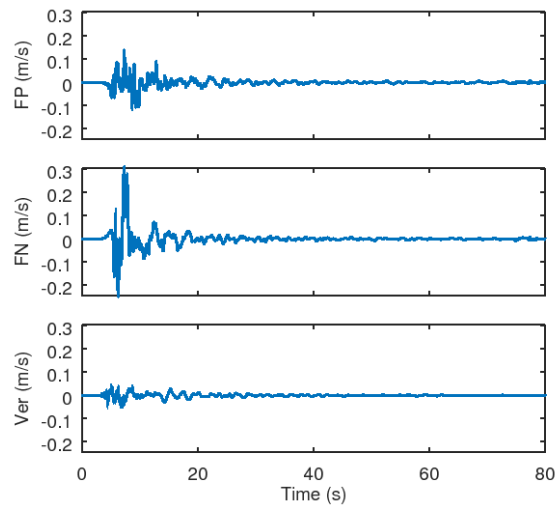
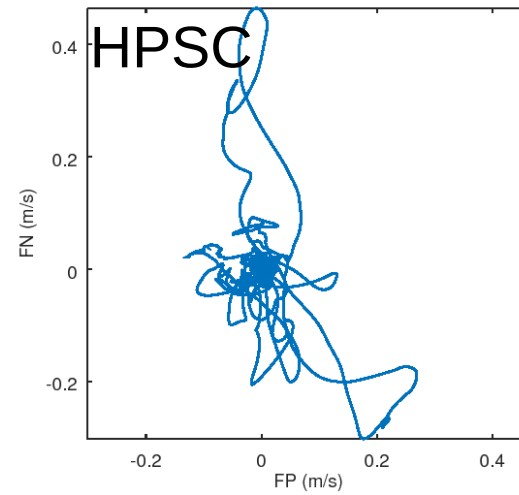
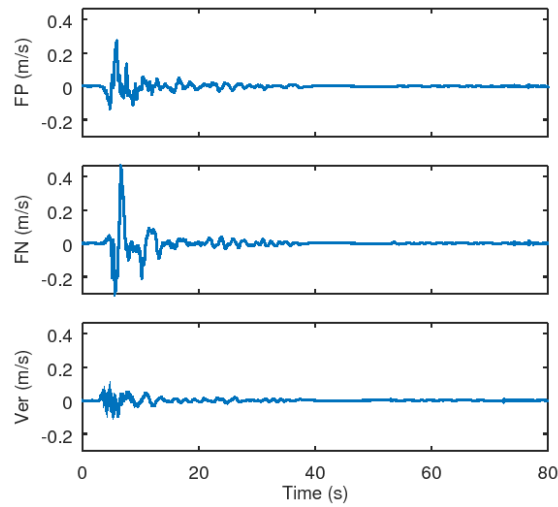
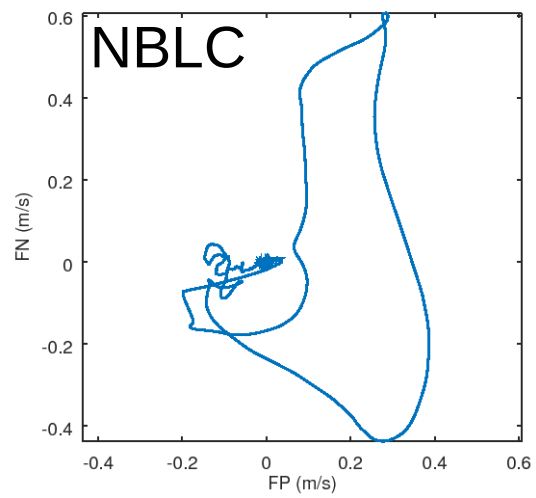
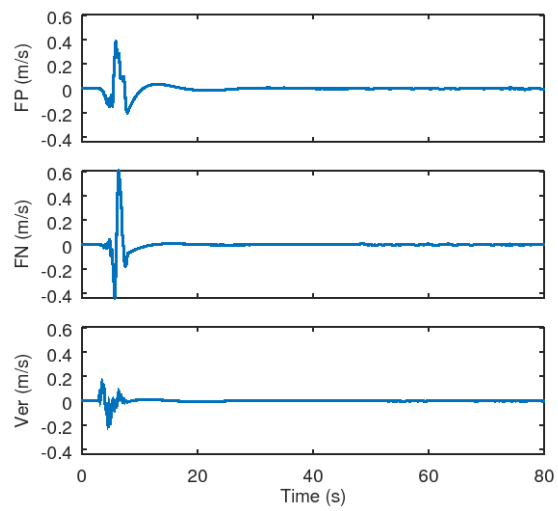
Fault normal acceleration



Fault parallel acceleration

Fault normal acceleration

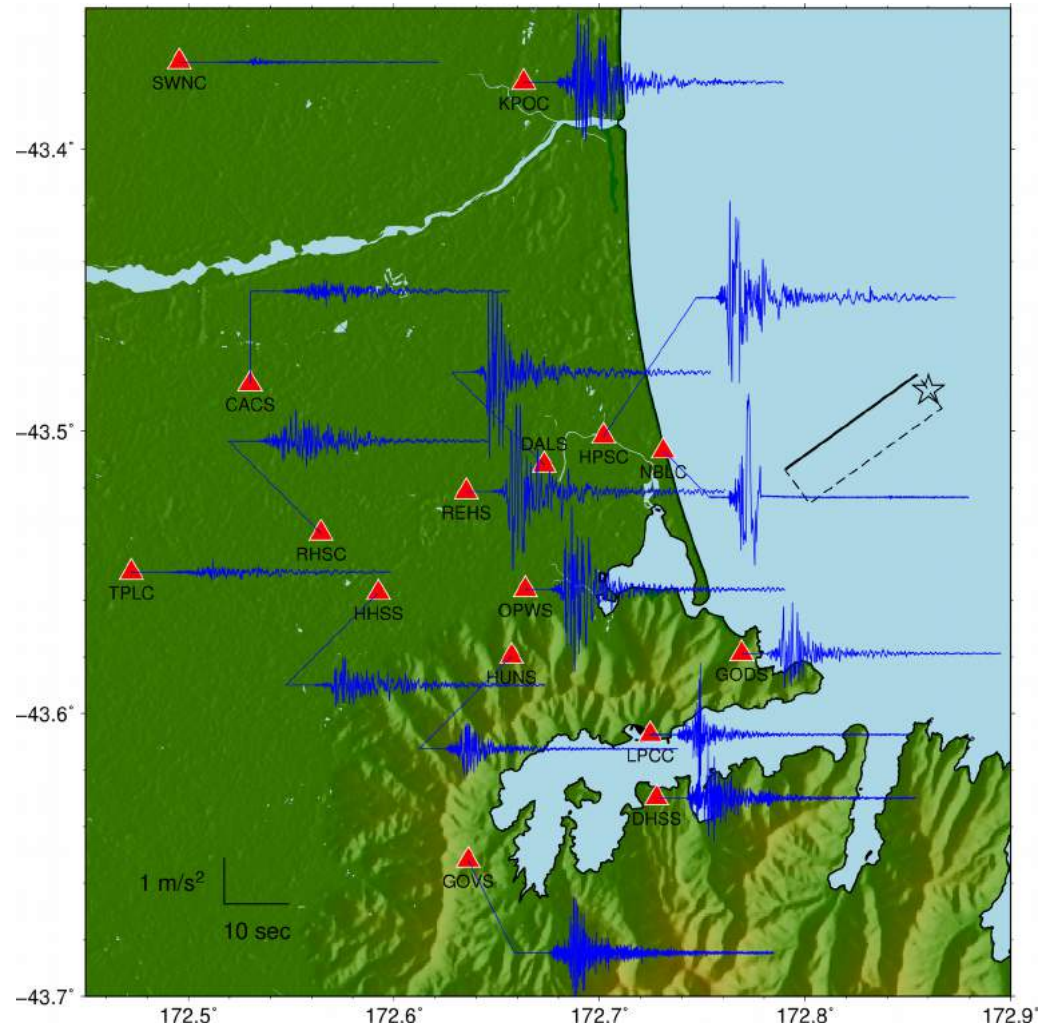
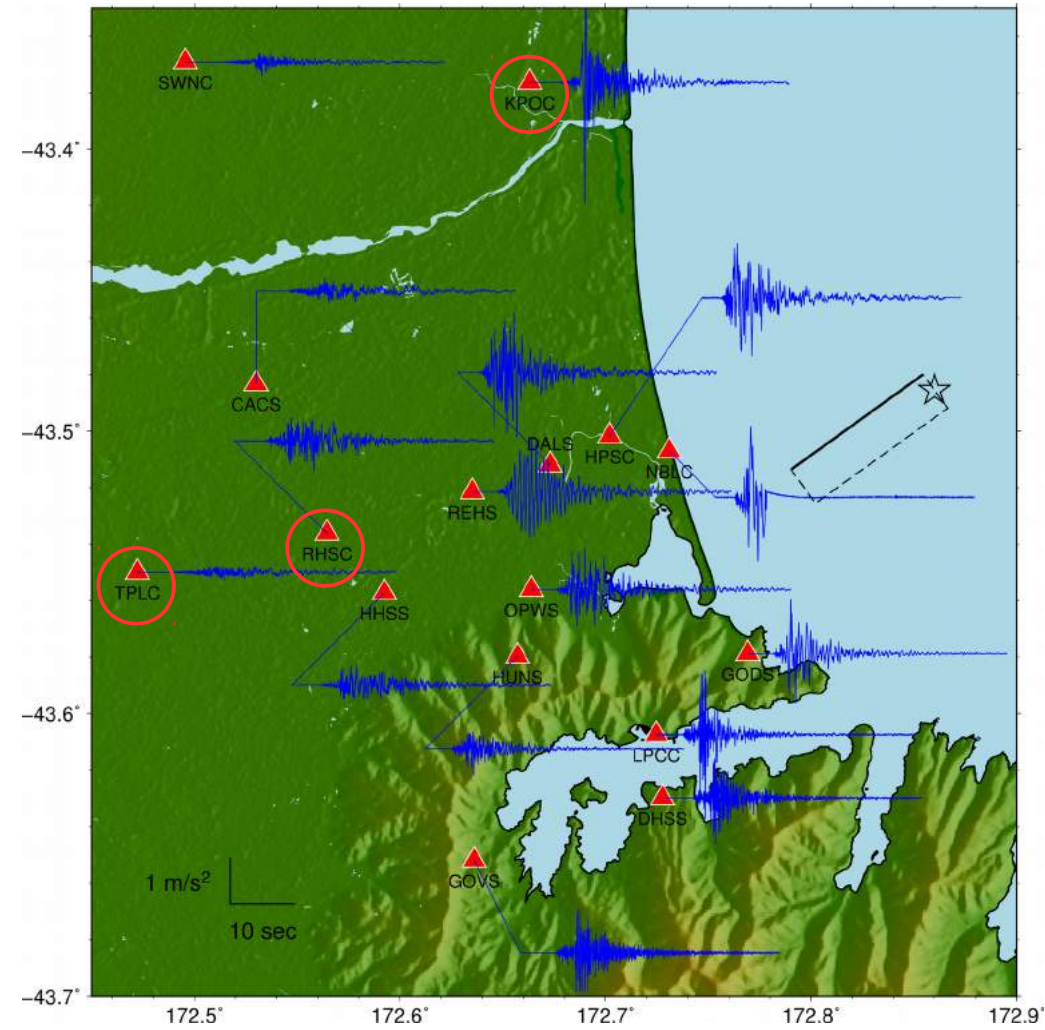


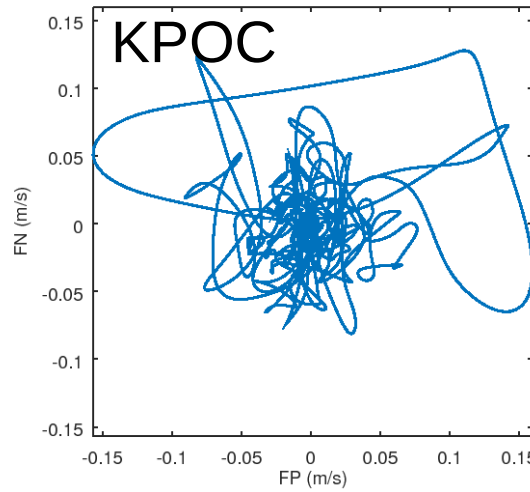
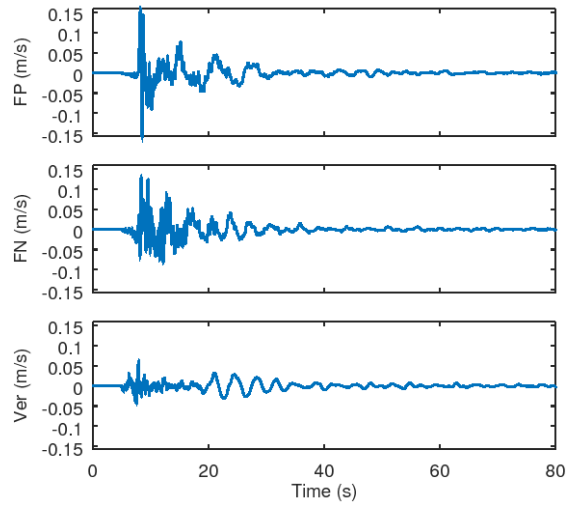
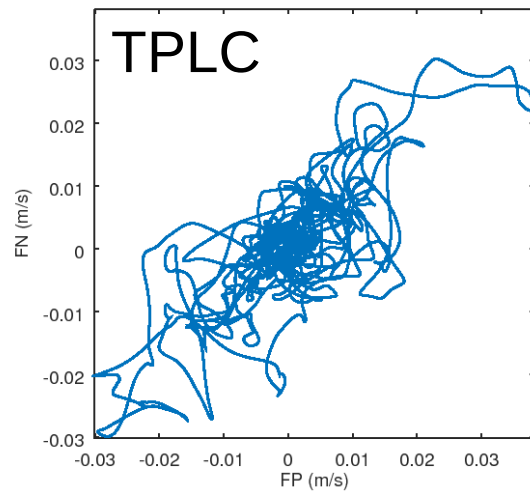
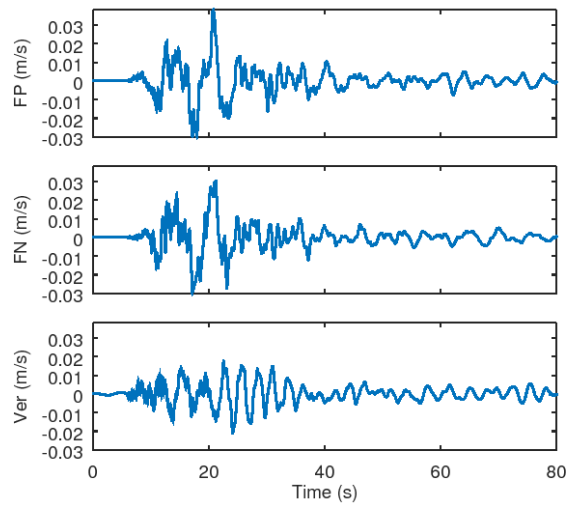
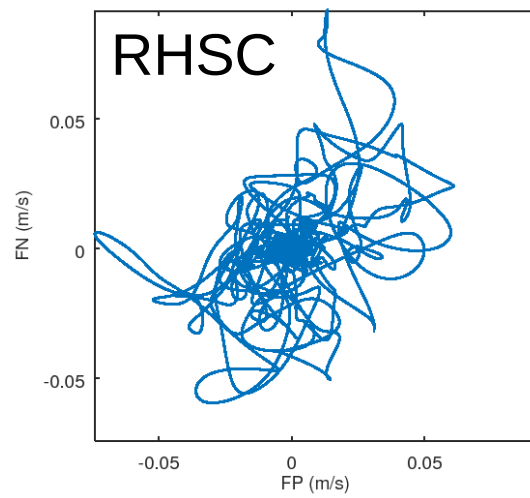
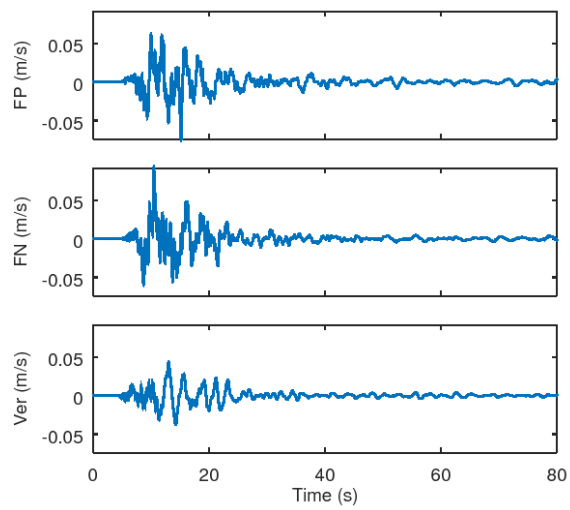


Velocity waveforms
Directivity effects

Fault parallel acceleration

Fault normal acceleration

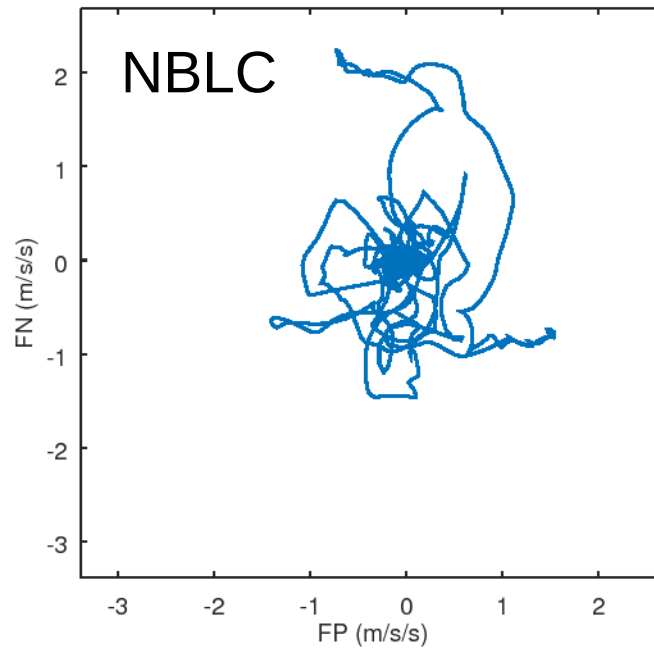
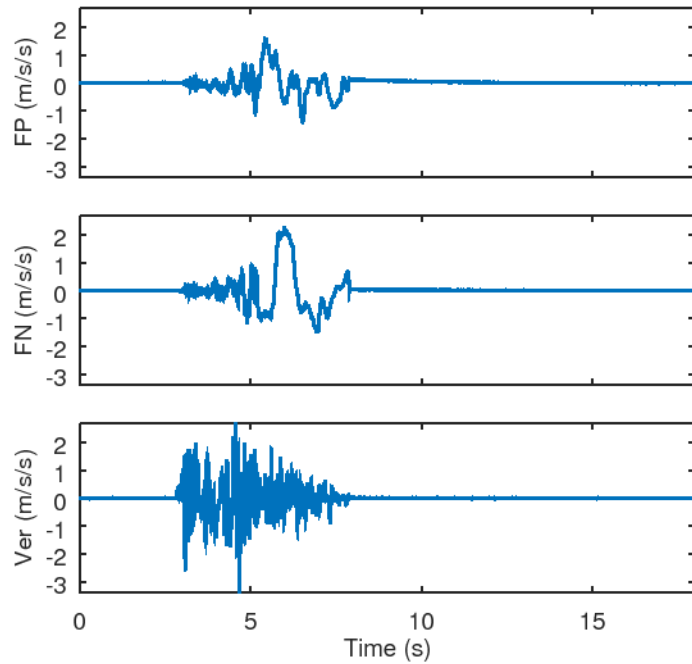




Velocity waveforms
Basin effects

Acceleration waveforms

Some hint of liquefaction (need to analyzed more)...



Outline

- Motivation
- Ground-motion recordings
- **Broadband simulations**
- Validation of numerical modeling
- Introduction to site-specific method (work in progress)
- Key findings and future work

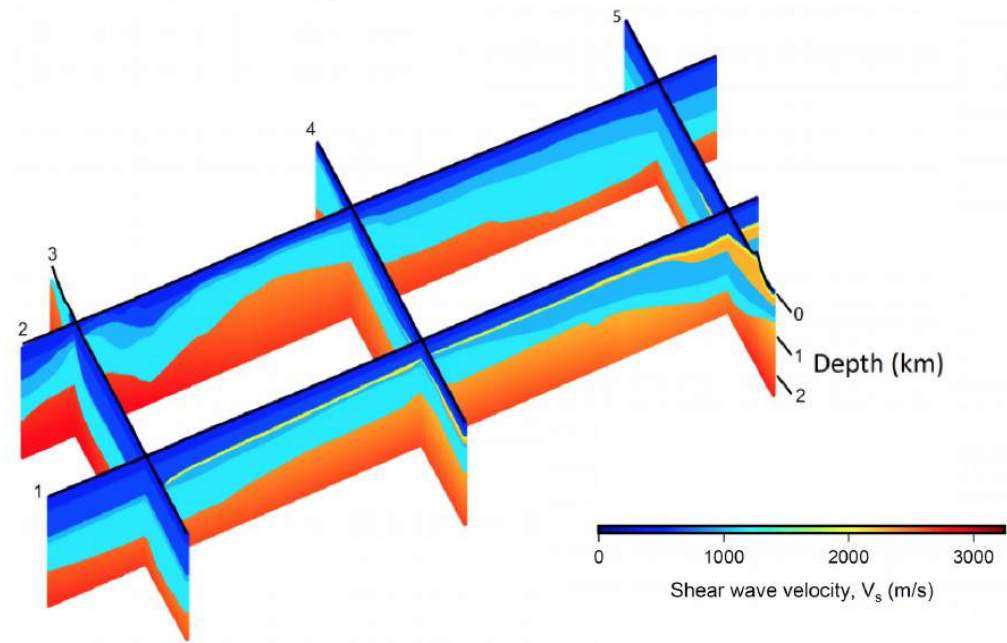
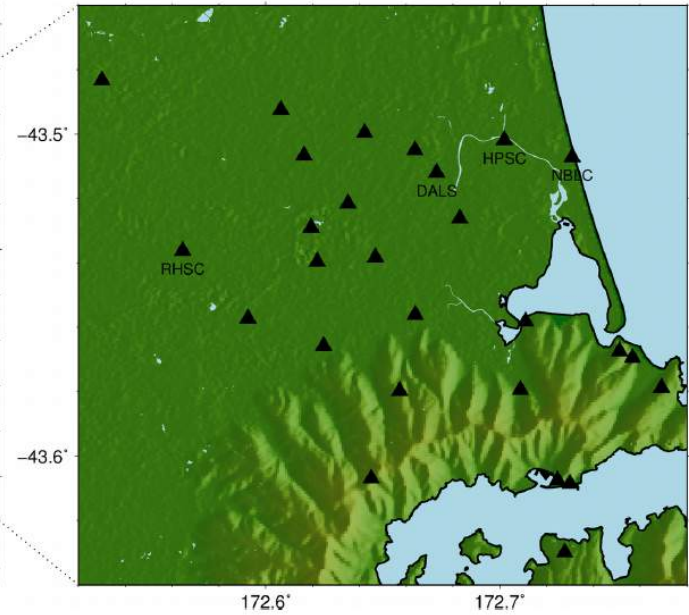
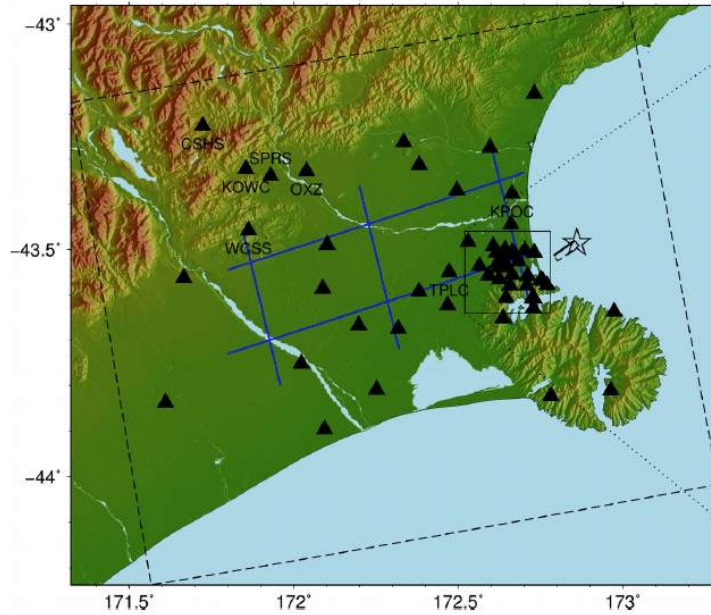
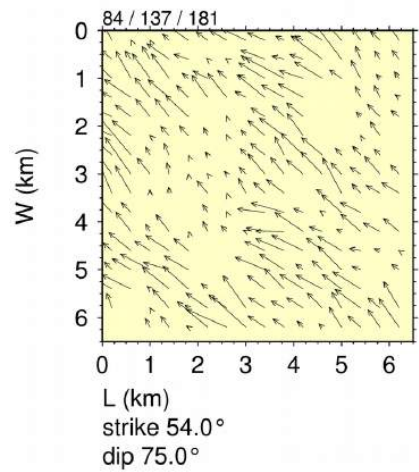
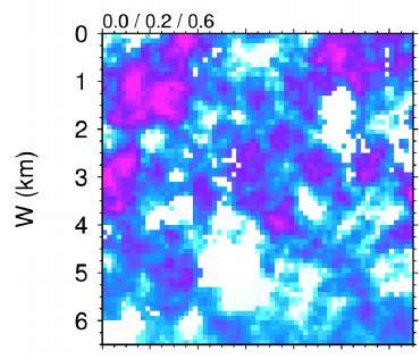
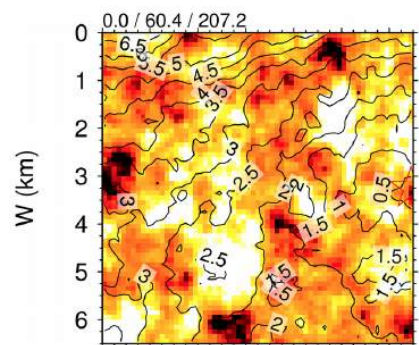
➤ Graves and Pitarka (2010, 2016)

LF: solve equation of motion, finite difference method,
3-D medium

+ (match filter at 1 Hz)

HF: semi-empirical ray based approach,
1-D generic (as base case),
1-D site specific (work in progress)

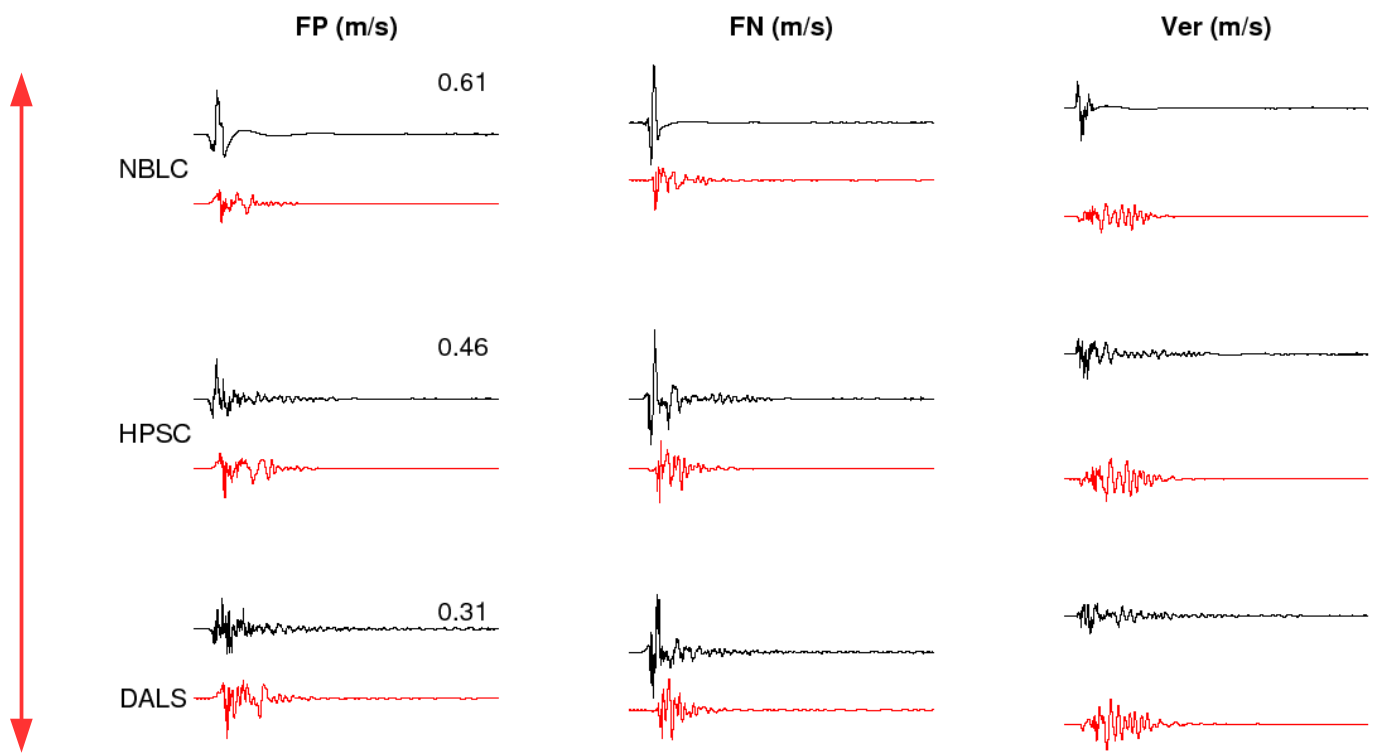
➤ Site amplification correction only for HF (not for LF), Campbell and Bozorgnia (2014).



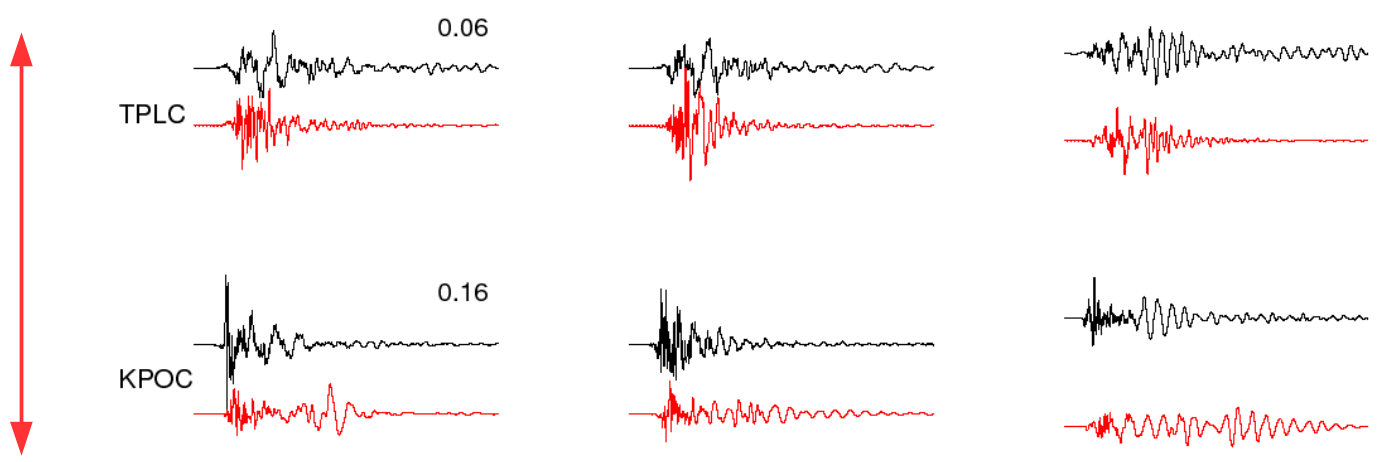
Outline

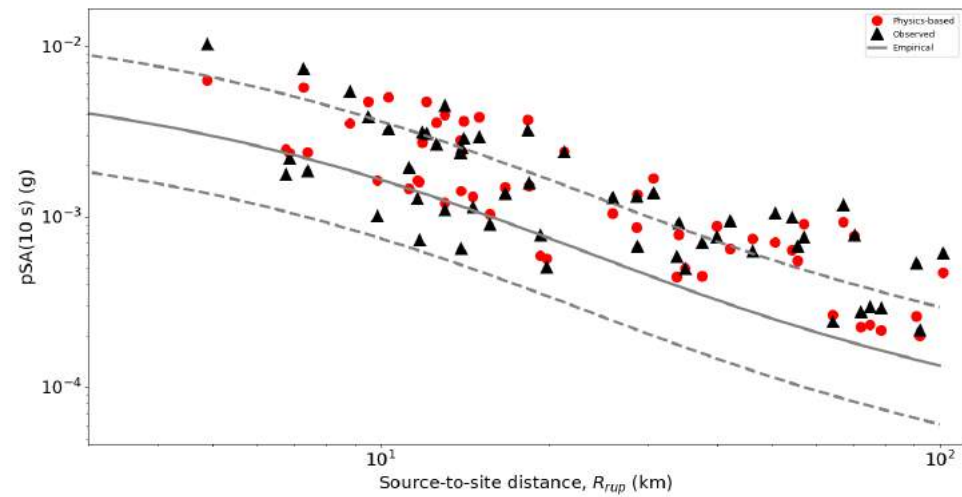
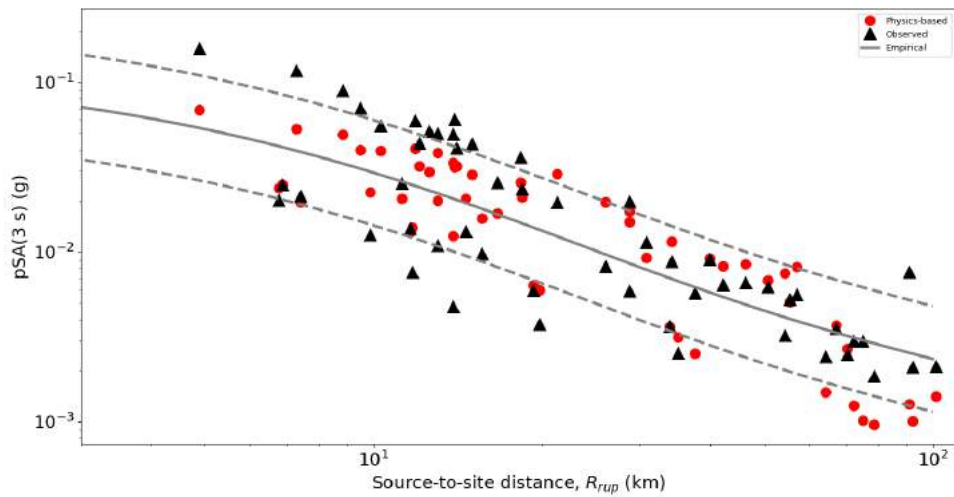
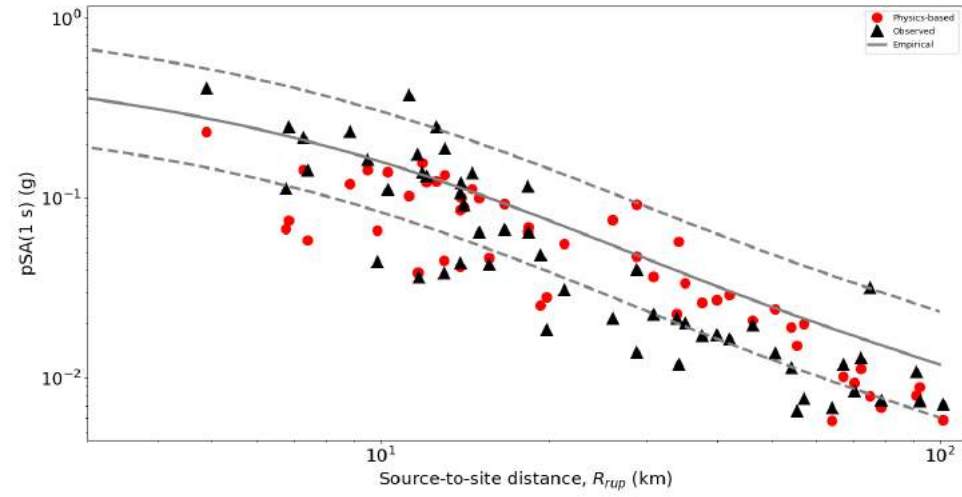
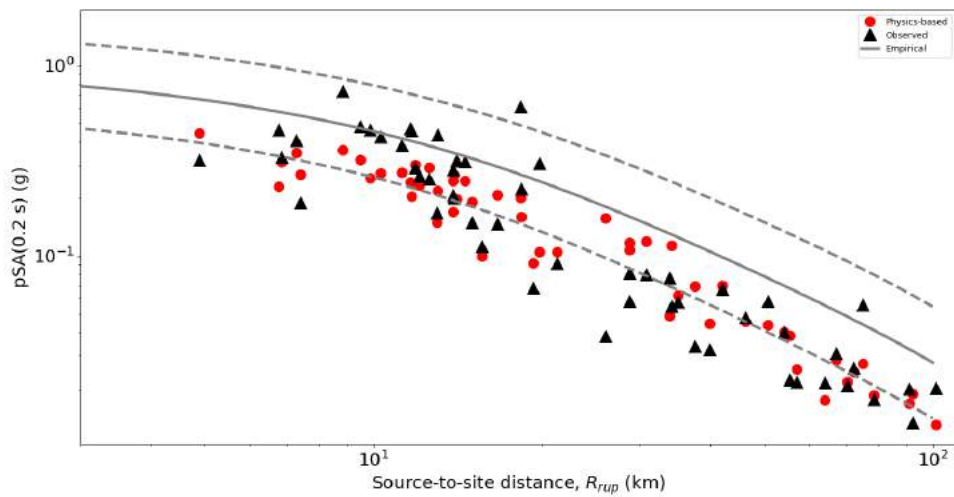
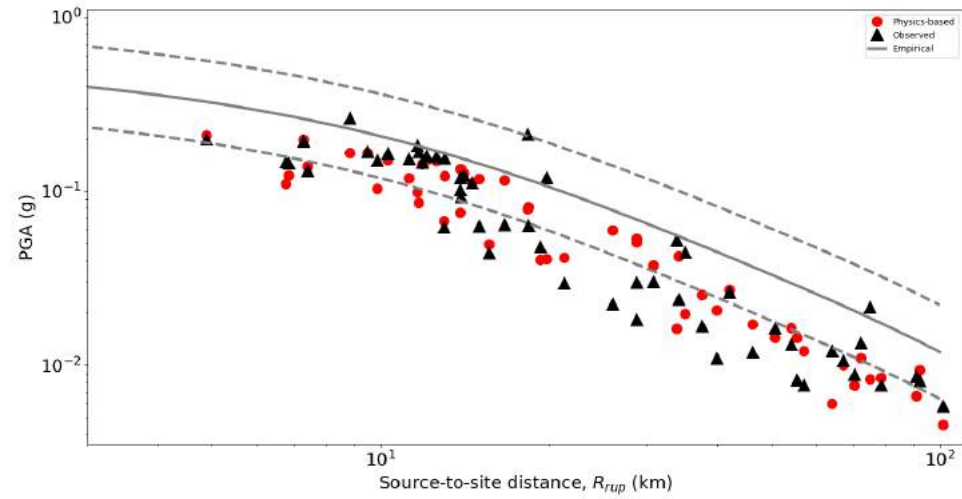
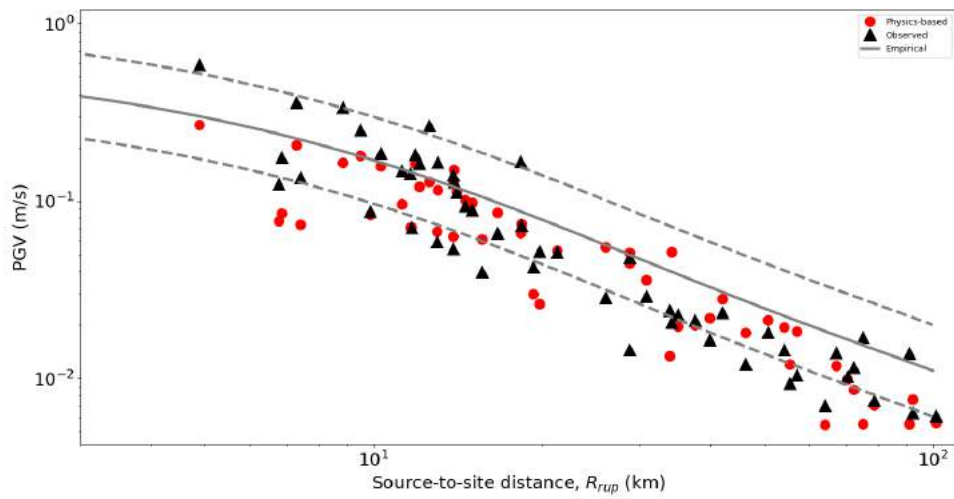
- Motivation
- Ground-motion recordings
- Broadband simulations
- **Validation of numerical modeling**
- Introduction to site-specific method (work in progress)
- Key findings and future work

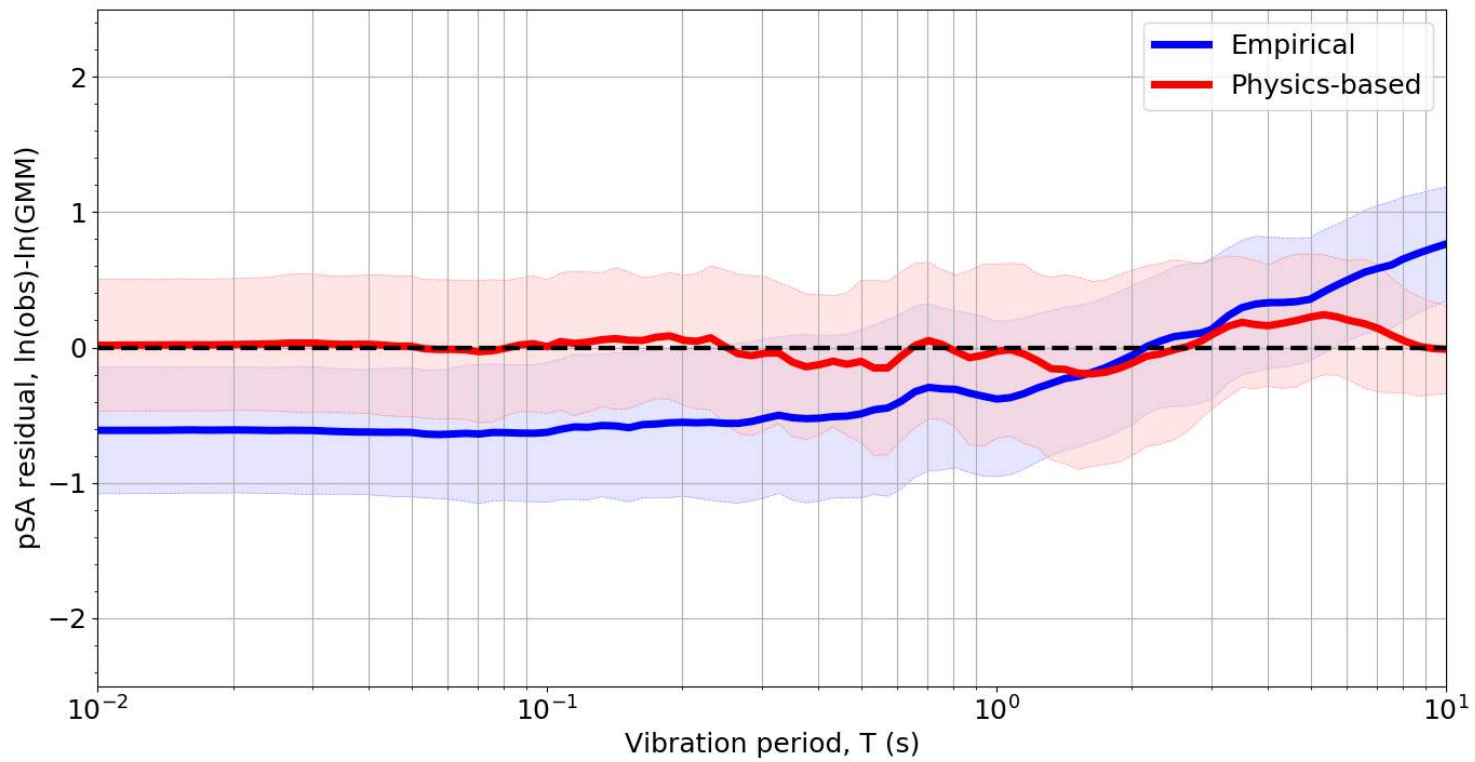
Directivity effects



Basin effects

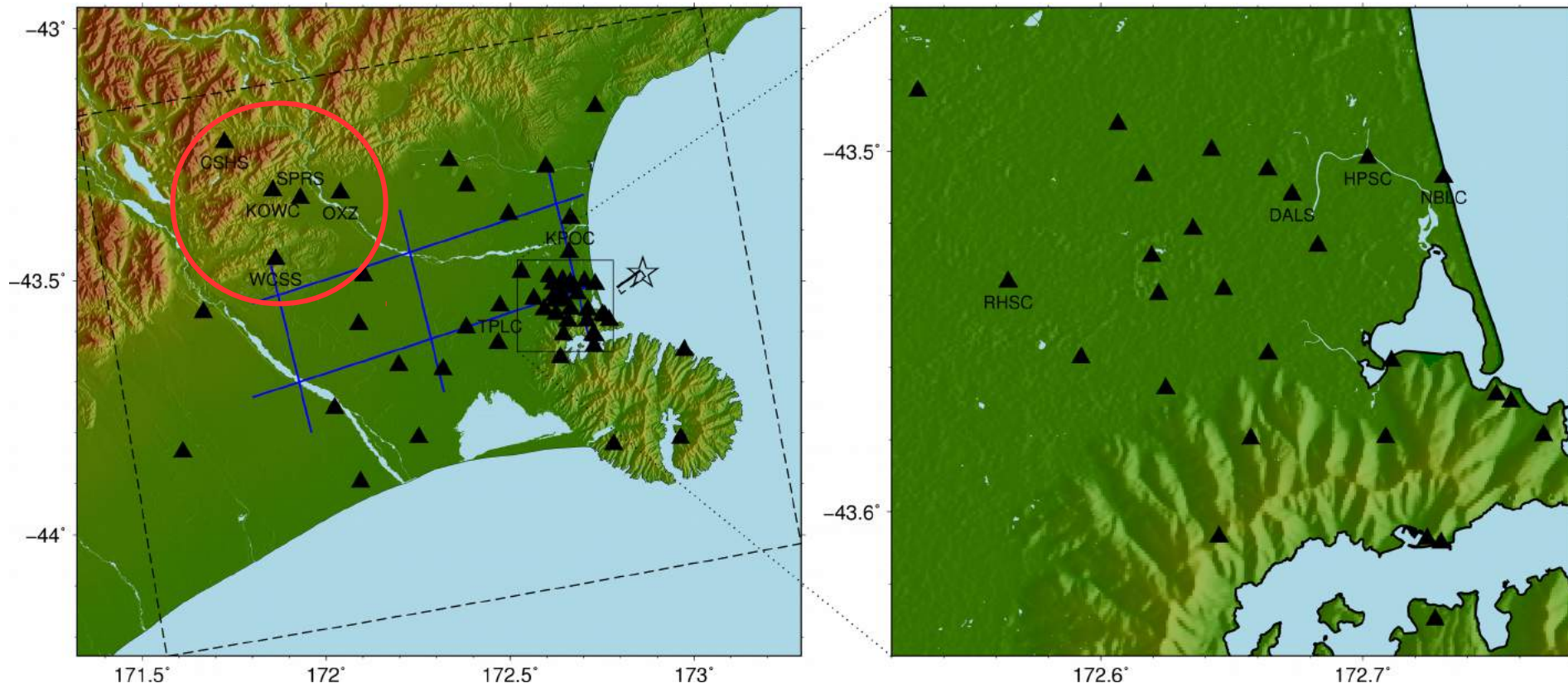


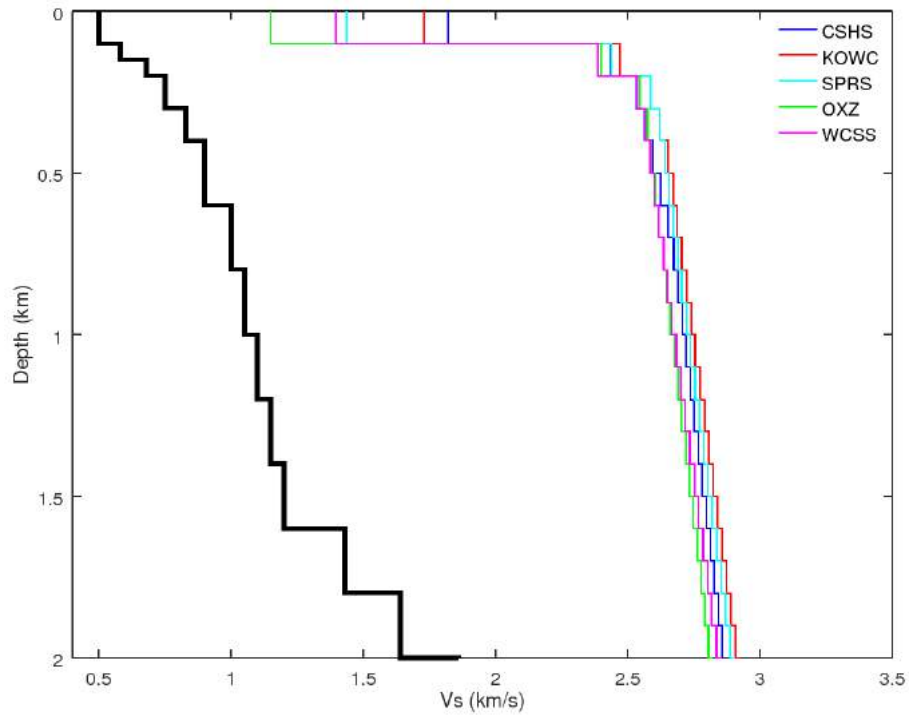
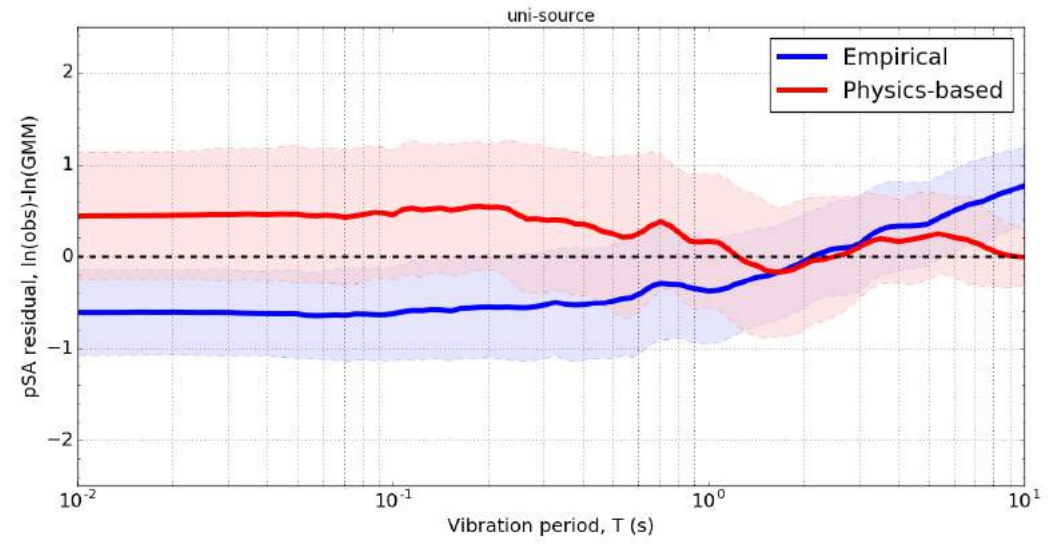
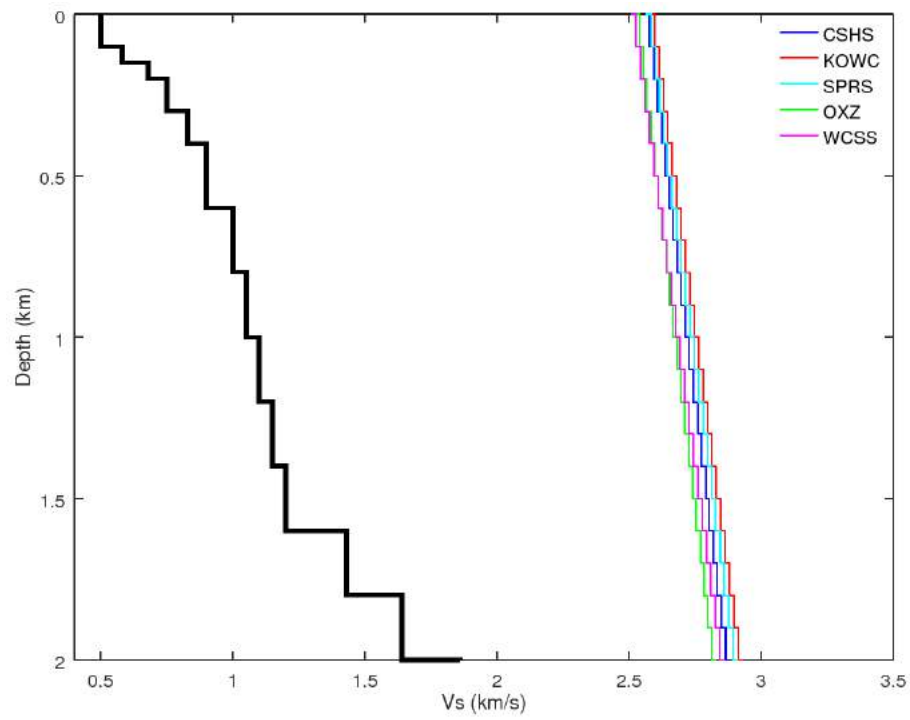




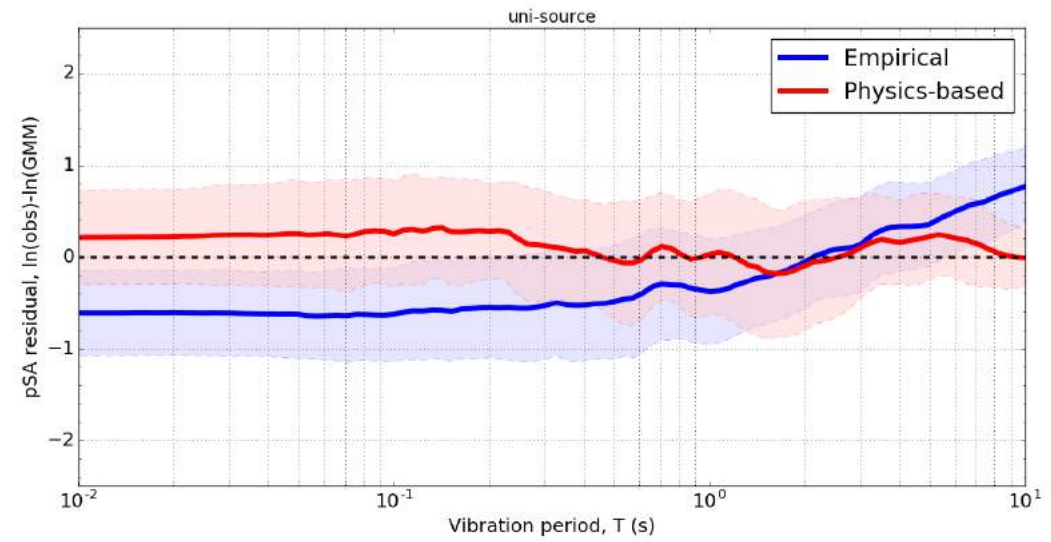
Outline

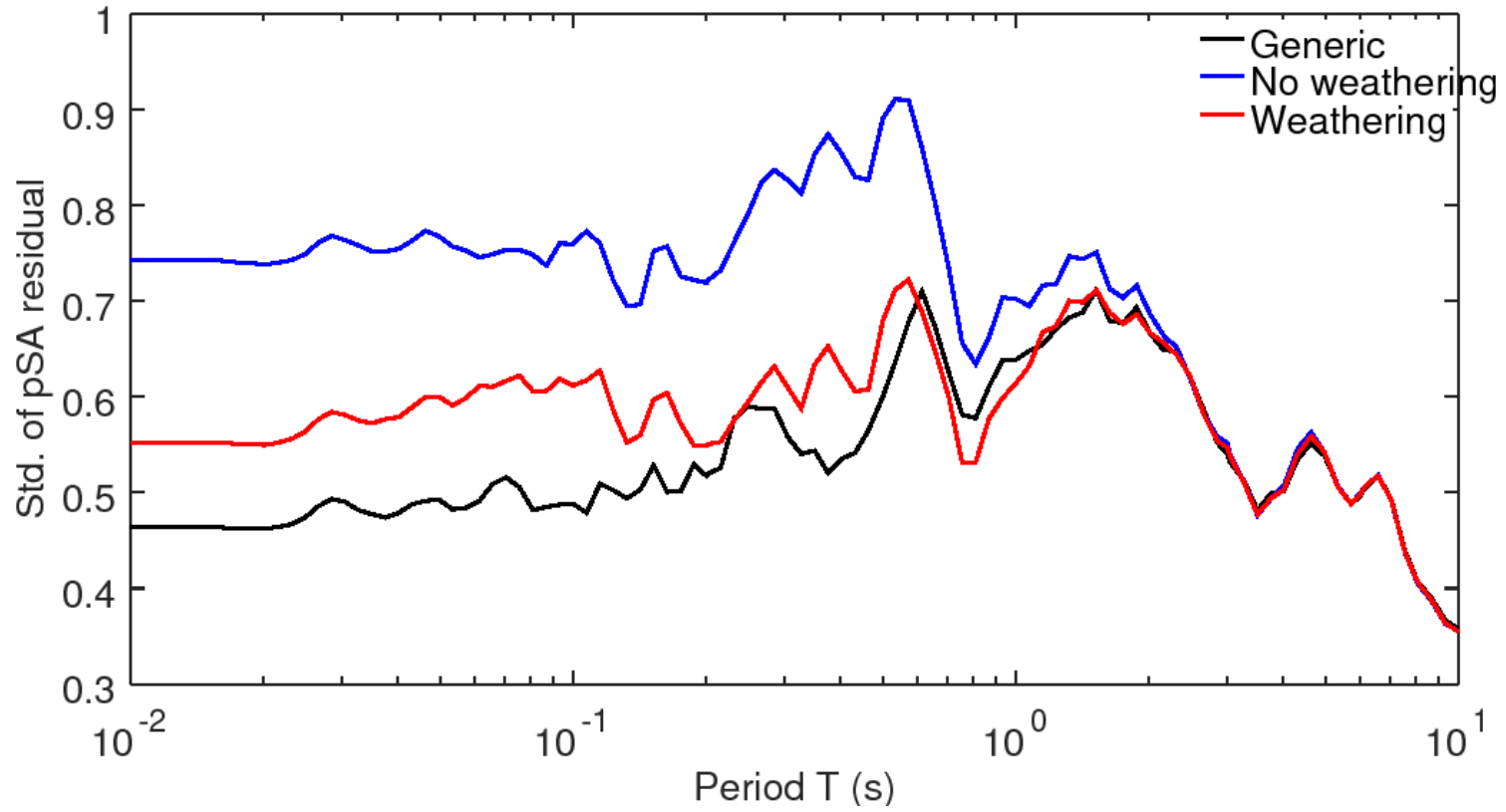
- Motivation
- Ground-motion recordings
- Broadband simulations
- Validation of numerical modeling
- **Introduction to site-specific method (work in progress)**
- Key findings and future work





Weathering function by Ely et. al. (2010)





Outline

- Motivation
- Ground-motion recordings
- Broadband simulations
- Validation of numerical modeling
- Introduction to site-specific method (work in progress)
- **Key findings and future work**

- Key findings:
 - Recorded ground-motions show: rupture directivity, basin effects, some hint of liquefaction.
 - Simulations are validated against observations and empirical GMM.
 - Site specific method seems working but further tests needed.

- Future work:
 - Implement weathering function for Port Hills region.
 - Apply site specific method to other earthquakes.
 - Multiple slip realizations.

Thanks

