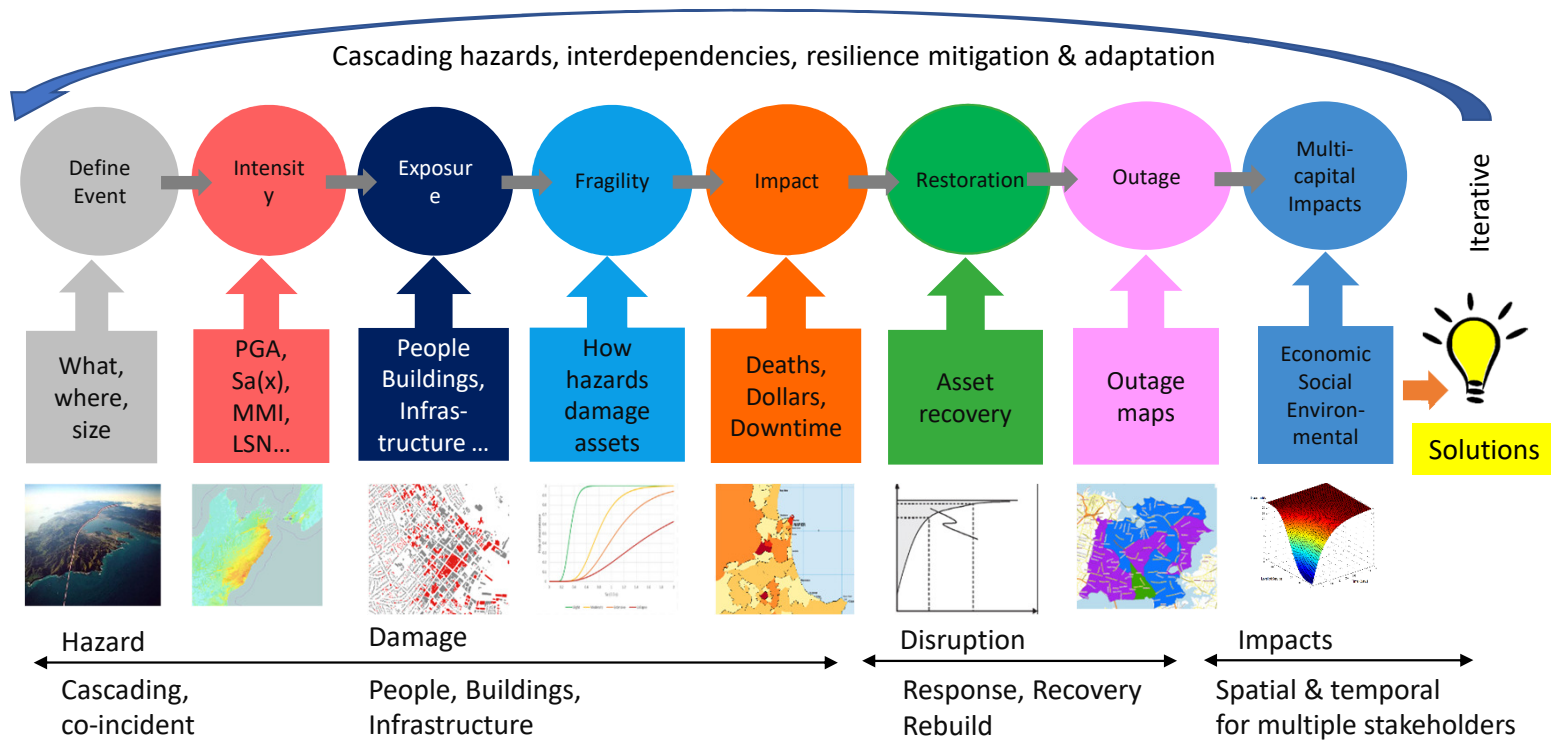


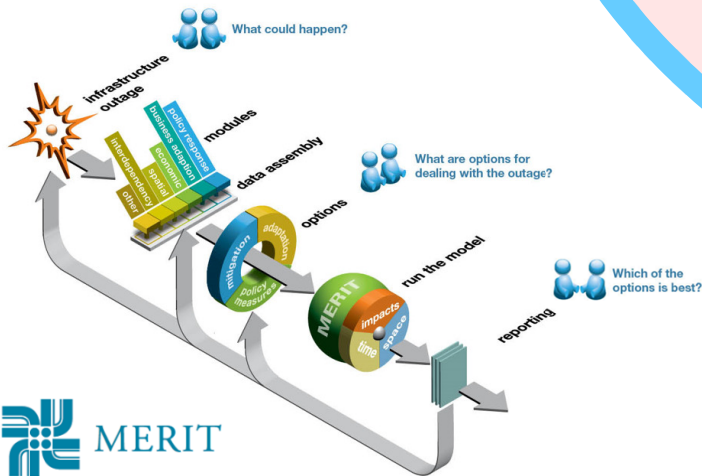


End-to-end modelling of disruption events

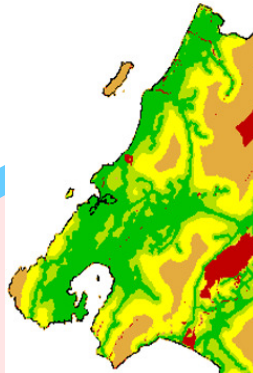


Measuring the Economics of Resilient Infrastructure Tool (MERIT)

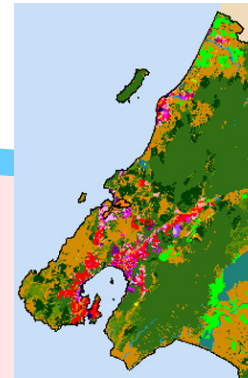
What's the modelling process?



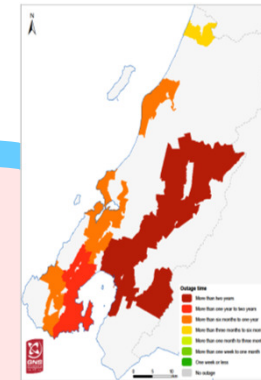
Direct Impacts on Tourism



Direct Impacts on Transport – Fuel, Road, Rail, Water, Air, Ports



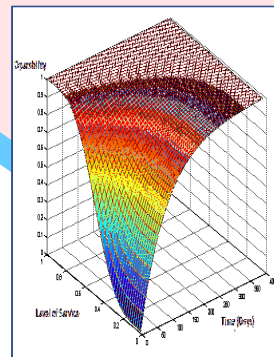
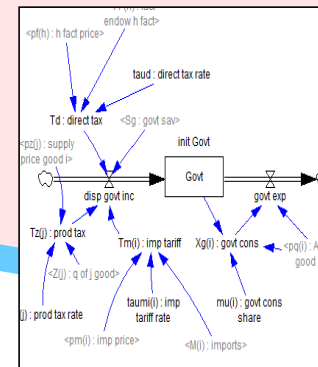
Direct Impacts of People & Business Relocation



Hazard, Building Damage, Infrastructure Outage Maps

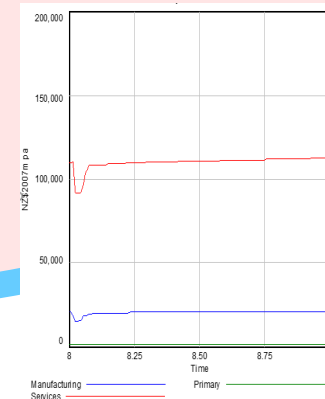
What's Included?

Wider Economic Impacts using DEM



Direct Impacts on Business Operation

Net Results for Region, NZ – GDP, Income etc by industry





Science Impact & Excellence

The spatial and temporal 'cost' of assessing economic impact, by spatial distribution of risk in

Computable general equilibrium modelling of economic impacts from volcanic event scenarios at regional and national scale, Mt. Taranaki, New Zealand

Fuel Resilience - MBIE
Critical infrastructure failure



Challenges and Opportunities for Economic Evaluation of Disaster Risk Decisions

18 Infrastructure Resilience planning \$2-3 billion of investment



Volcanic Eruptions – Councils and Lifelines
Distributional impacts

Managed Retreat
Slow onset hazards



Spatial MERIT Interdependencies

Computers, Environment and Urban Systems

Developing integrated models by coupling together existing models, land use, economics, demographics and transport in Wellington, New Zealand

Transport MERIT
Network disruption

The economic impacts of road outages in New Zealand



Alpine Fault – Councils and Lifelines
Event impacts

Civil Engineering and Environmental Systems

Economic Systems Modelling of Infrastructure Interdependencies for an Alpine Fault Earthquake in New Zealand

Ministry of Transport
Enabling New Zealanders to Thrive

Ministry of Business, Innovation & Employment
HĪKINA WHAKAŌTUITUI

The impact of the 2016 Kaikōura earthquake on our economy

Kaikōura Earthquake
Agile event response
Recovery planning

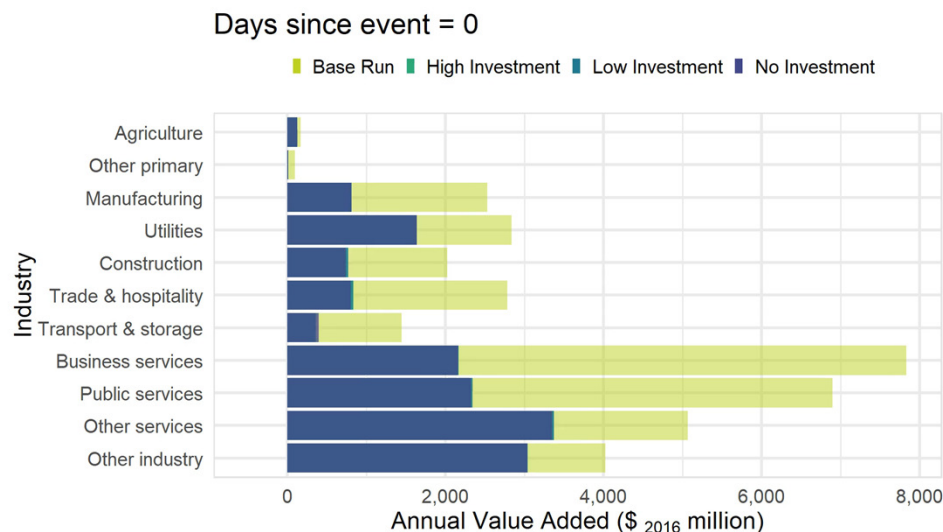




Where is MERIT being applied?



- Single infrastructure disruptions
 - Electricity (Vector, Transpower)
 - Port (Lyttelton), Road (MoT, NZTA)
 - Water (WaterCare, Wellington Water)
- Natural hazard event disruptions
 - Alpine Fault (MCDEM)
 - Auckland Volcanic Field (AC, AELG)
 - Kaikōura (MoT/MBIE/NZTA)
 - Wellington Fault (GW, WELG, etc)
- Business Cases
 - Wellington Resilience Project – 18 infrastructure providers, 2-3 billion of investment
- Developed under MBIE funding, QuakeCoRE, Resilience NSC and through commercial contracts



➤ For more information <https://www.merit.org.nz/>