

NZTA Perspective on Resilience





New NZTA structure

Customer

Cultural Change

Safety

Technology

Economic prosperity

Collaboration

Current process – Minor Resilience and Enhanced Resilience work categories.



Resilience Project

RESILIENCE KEEPING OUR ROADS OPEN

Resilience is about preserving and quickly restoring access to the network in the face of unplanned events, enabling customers to complete their journeys.



Increasing
robustness
and improving
alternate
routes

KEY ASPECTS

Decreasing
the recovery
time

WHAT THE TRANSPORT AGENCY ALREADY HAS UNDERWAY?

- » Resilience emergency response plans
- » Greater resilience and better alternate routes being built
- » Improved scour protection and erosion control
- » Well advanced seismic strengthening
- » Ongoing maintenance activities, reducing blackspots
- » Avalanche control and rock fall management

WHAT IS THE RESILIENCE PROJECT DOING?

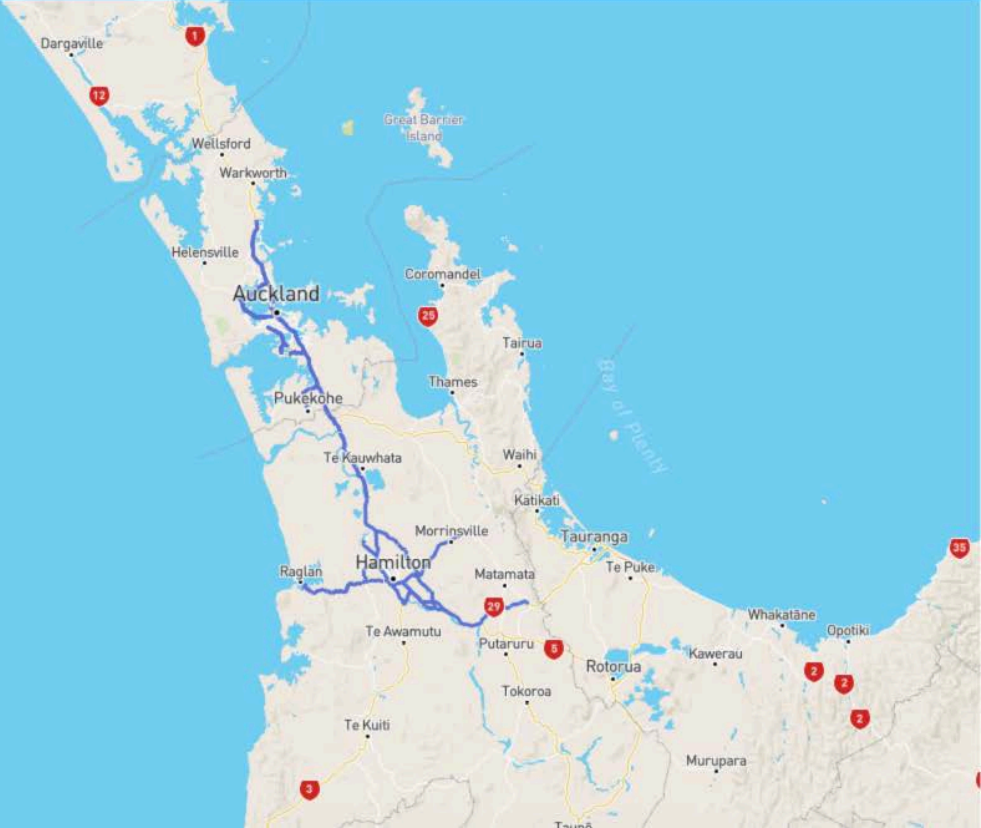
The Resilience Project has a number of work-streams that aim to deliver these outputs:

- » Up to date, field-tested, **business continuity plans and emergency response plans**
- » More comprehensive **evidence-based tools and processes** to assess and prioritise resilience risk
- » An expanded programme of targeted **improvements and maintenance** activities
- » Online, interactive **detour maps**.
- » Closer **links with key partners** (Local Government NZ, New Zealand Lifelines)

THESE ACTIVITIES BECOME PART OF BAU ON COMPLETION



Alternate Routes Tool

Detour Selector

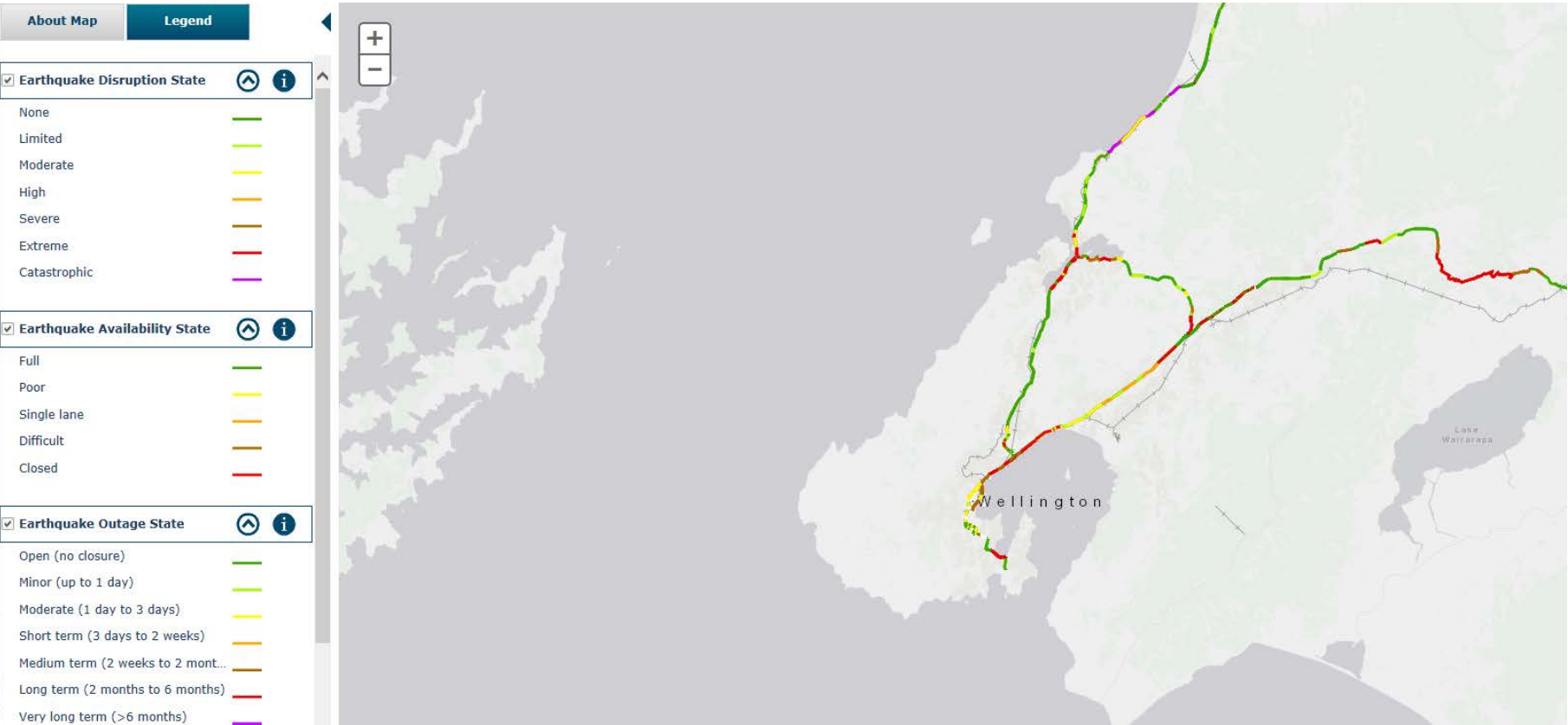


The map displays the North Island of New Zealand with major motorways highlighted in blue. A red circle with the number '1' is placed on the motorway north of Auckland, indicating an incident location. A blue line shows the alternate route that bypasses this area. Other cities and towns labeled include Dargaville, Wellsford, Warkworth, Helensville, Auckland, Coromandel, Thames, Tairua, Pukekohe, Te Kauwhata, Waihi, Katikati, Morrinsville, Tauranga, Raglan, Hamilton, Matamata, Te Puke, Te Awamutu, Putaruru, Rotorua, Whakatane, Opotiki, Te Kuiti, Tokoroa, Kawerau, Murupara, and Te Anau. Motorway numbers 1, 12, 25, 29, 35, and 3 are also visible. A 'feedback' button is located in the bottom left corner of the map area.

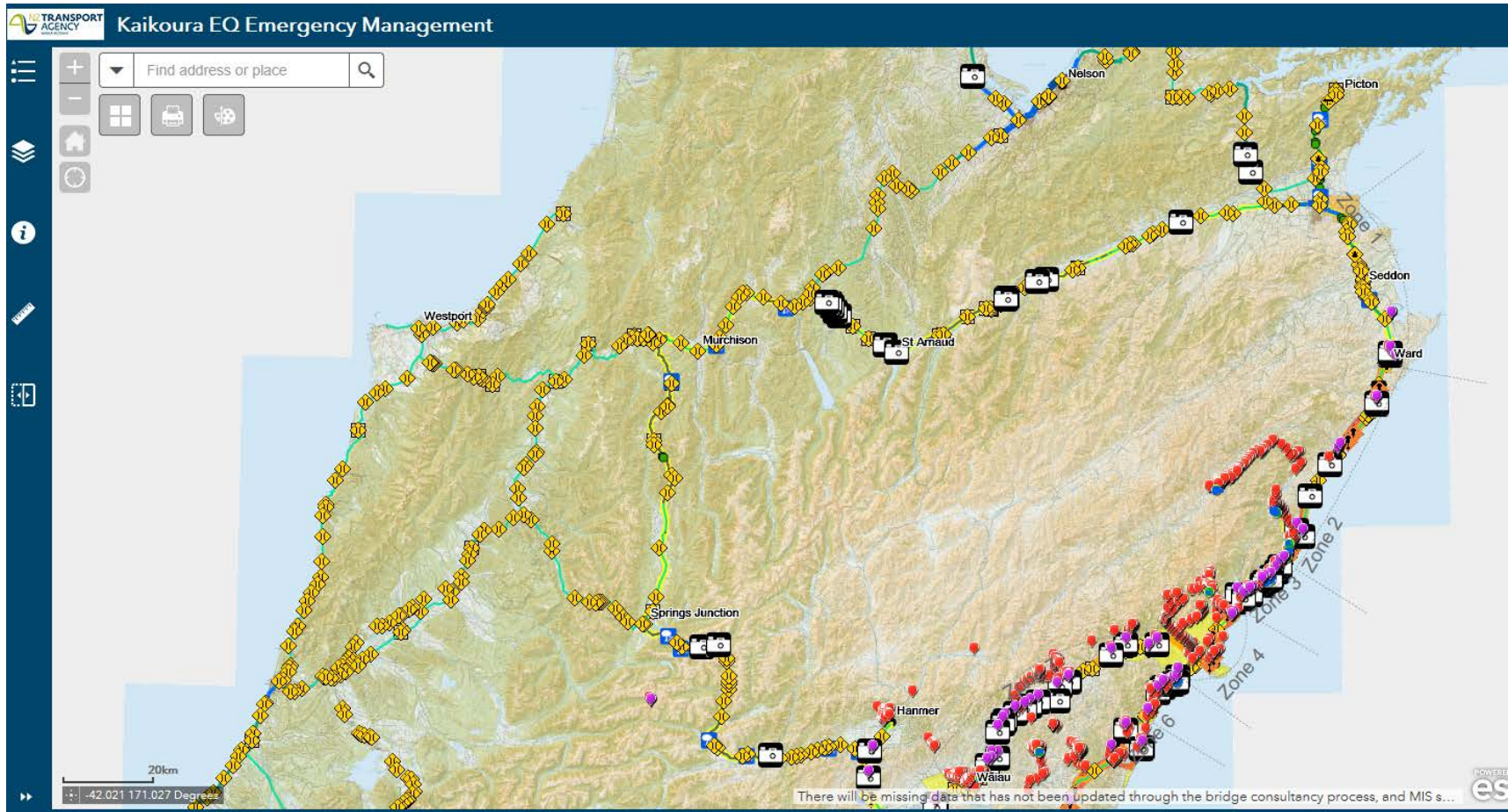
Detour selector

-  Please tap on the motorway at the location where the incident has occurred.
-  The detour route will be shown on the map along with accompanying details in this panel.

Highway Resilience Assessment



Dealing with the Kaikoura quake



Dealing with the Kaikoura quake

