

# WELLBEING IMPACTS FROM DISRUPTIVE EVENTS

Juan Monge, Nicky McDonald, Garry McDonald, Duncan Grimson and Pascal Cheon

QuakeCoRE IP4: Harnessing Disruptive Technologies



# OUTLINE

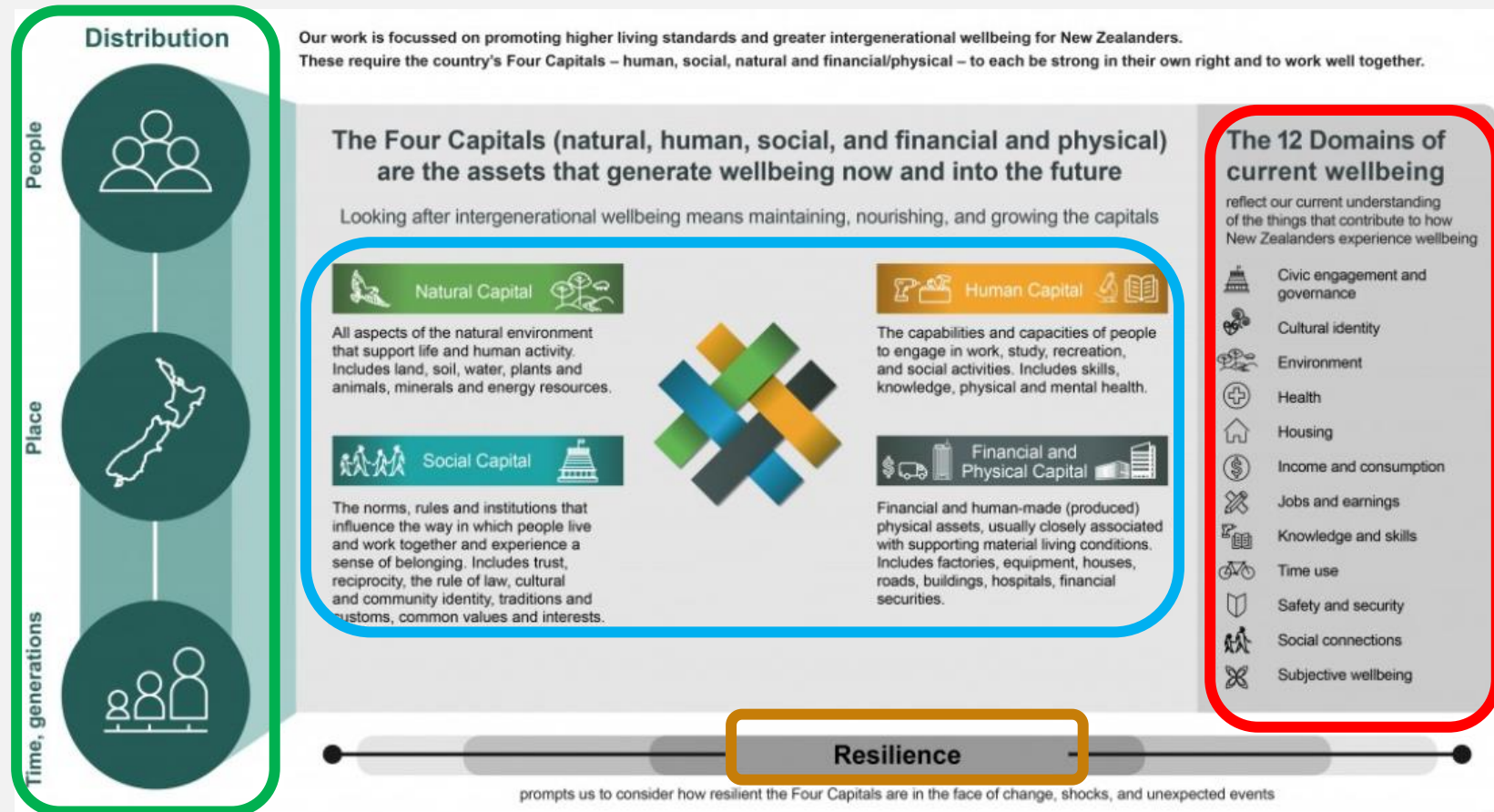
- Wellbeing in a nutshell
- Use of graphical methods
- Review of graphical methods to link hazards to wellbeing
- Plans to include distributional impacts on economy-wide models

# WELLBEING IN A NUTSHELL

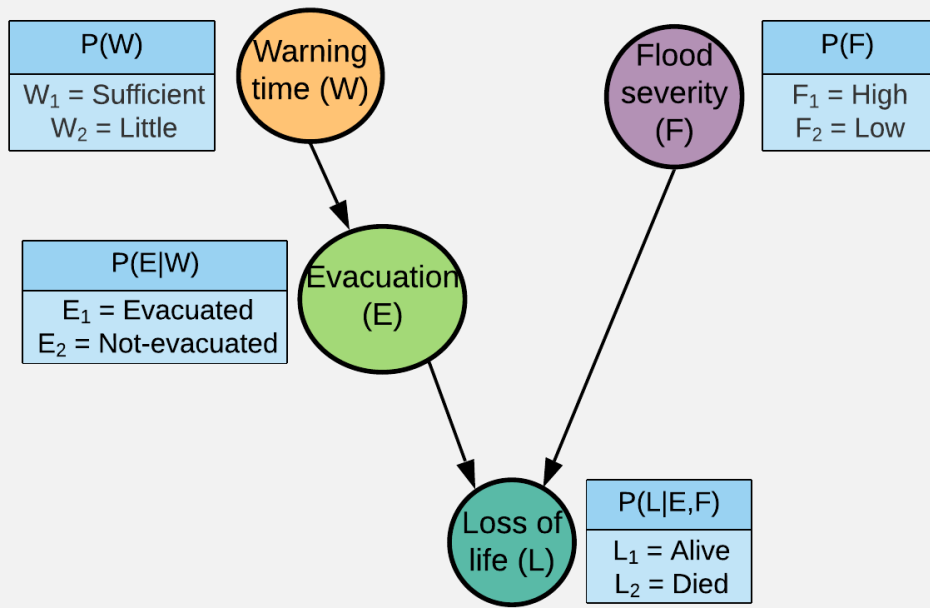
- The NZ Living Standards Framework:
- Multi-dimensional well-being (**12 domains**)
- **Distributional** issues and implications
  - Intra-generational
  - Inter-generational
- Long-term issues and implications (**4 capitals, risk and resilience**)
  - Capitals are natural, social, human, and financial and physical

Current well-being → Distributional impacts

Future well-being → Risk and resilience



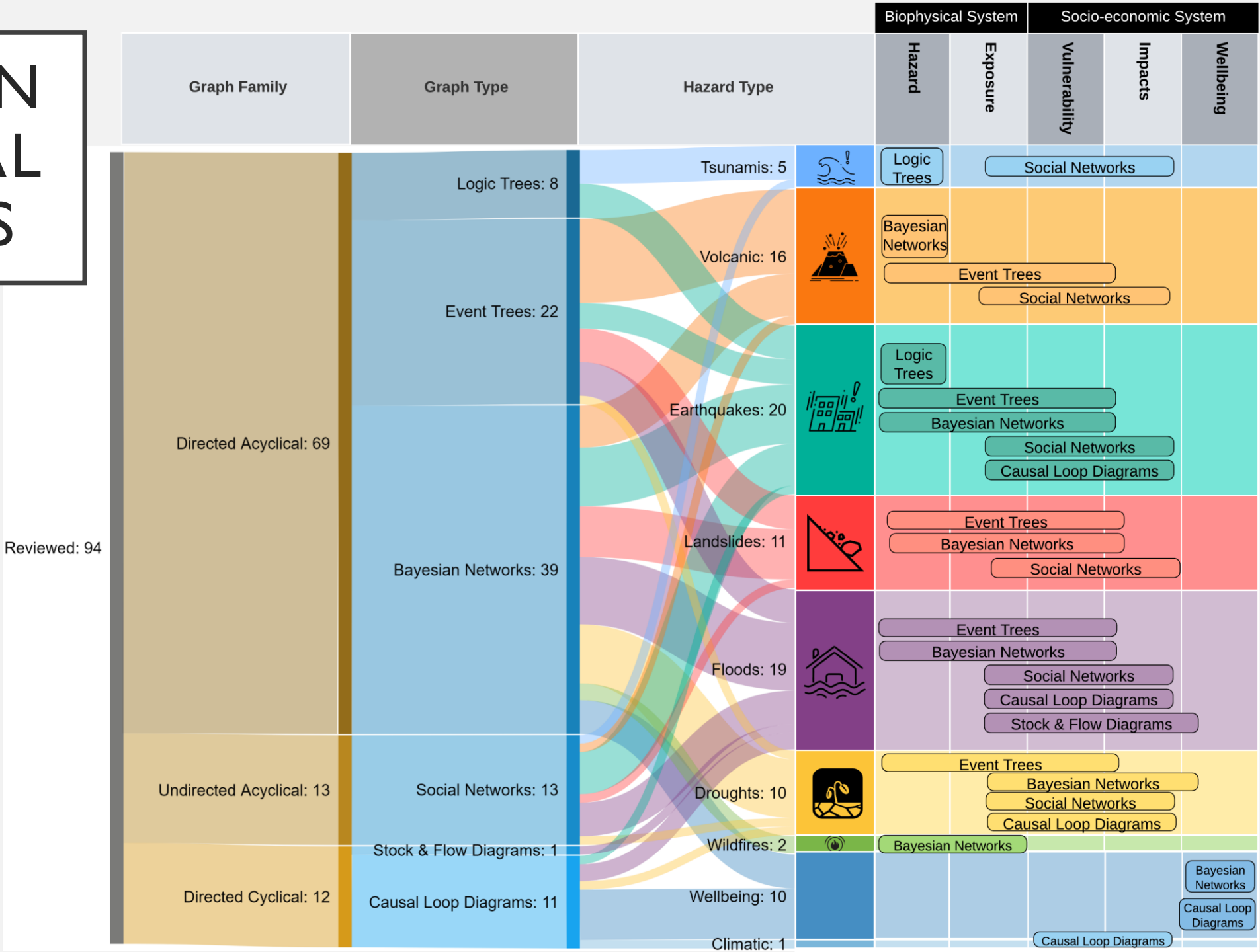
# WHY GRAPHICAL METHODS?



Source: Peng and Zhang (2012)

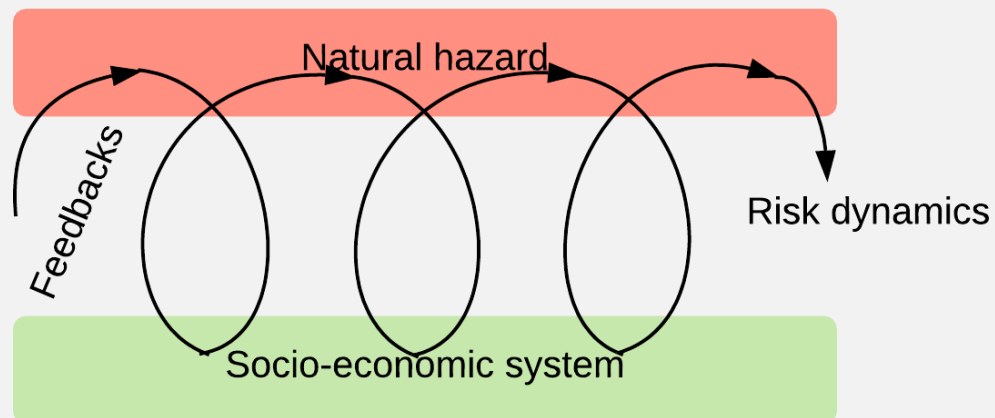
	Undirected	Directed
Acyclical		
Cyclical		

# REVIEW ON GRAPHICAL METHODS

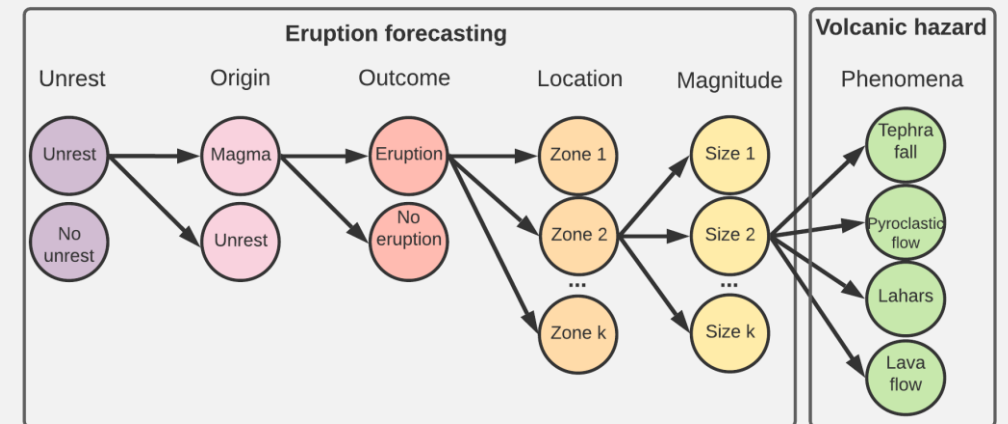


# REVIEW ON GRAPHICAL METHODS

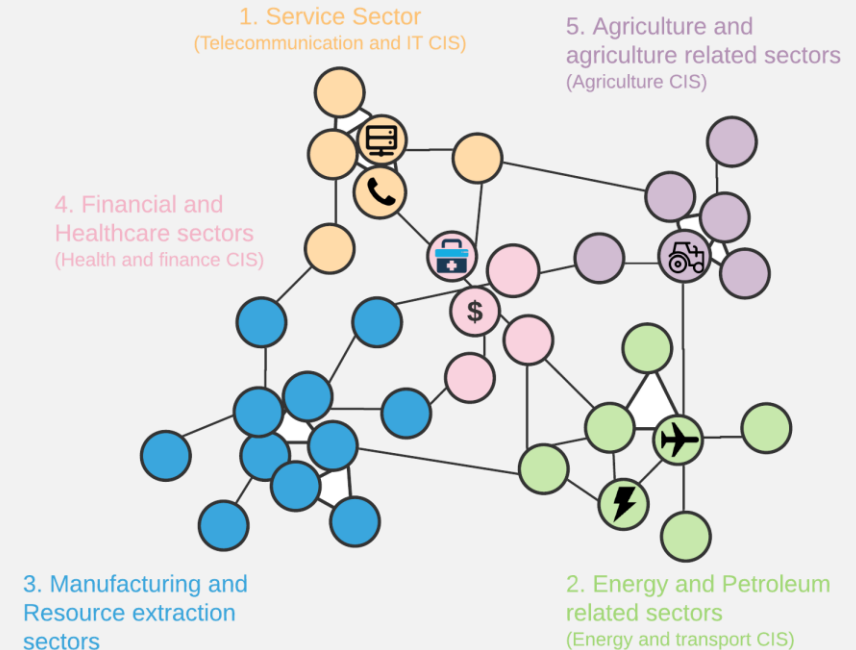
- **Biophysical systems**
  - Graphs based on probabilistic
  - Hazards → direct impacts on infrastructure
- **Social systems**
  - Graphs based on wider socio-economic linkages and dynamically adaptive behaviours
  - Direct impacts → indirect impacts



Source: Di Baldassarre et al., (2015)



Source: Marzocchi and Bebbington (2012)



Source: Chopra and Khanna (2015)

# DISTRIBUTIONAL IMPACTS IN ECONOMY-WIDE MODELS

- Vast literature on climate change impacts
- Through the representation of households (HHs):
  - As the labour force in the economy
  - As consumption agents
- Methods identified in the literature:
  - Multiple HHs in the macro model (MHM)
  - Coupling macro-micro simulators (MSH)
  - Modelling income distribution (MID)

