

# re-running cybershake v18p6

## Background

There was an error while matching LF and HF for the previous run.

Need to re-run all of them to produce correct results.

## Notes

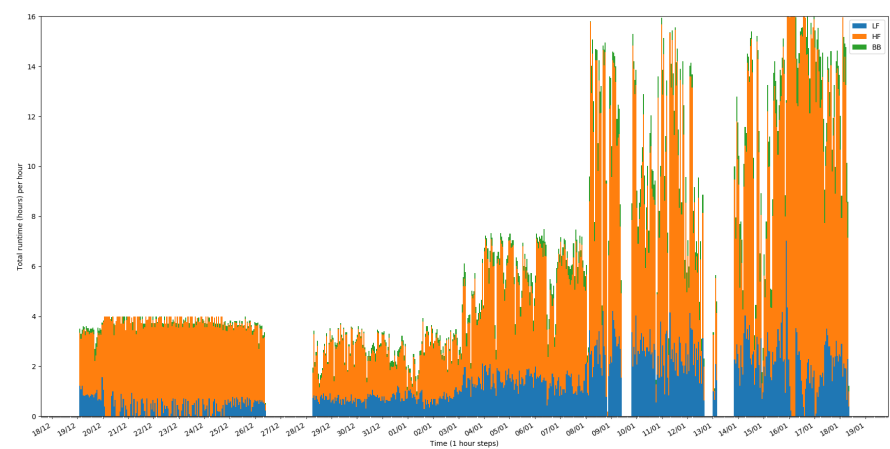
Core hours:

- LF: 132507
- HF: 249139
- BB: 18539
- Total: 400185

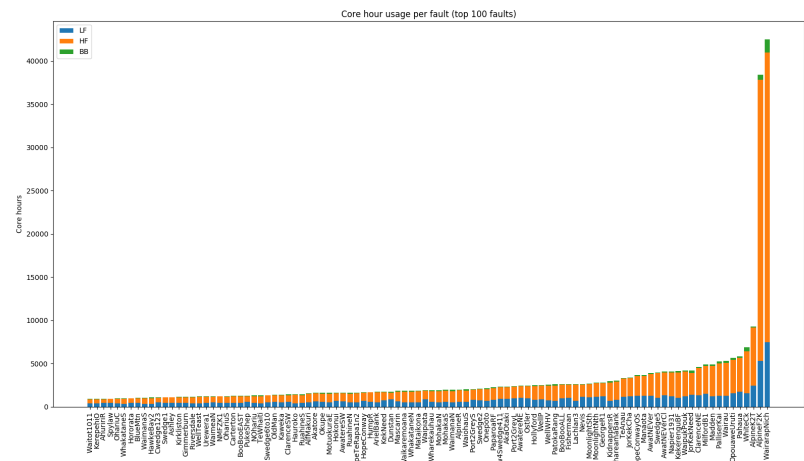
Run time (hours):

- LF: 828
- HF: 3114
- BB: 231
- Total: 4173

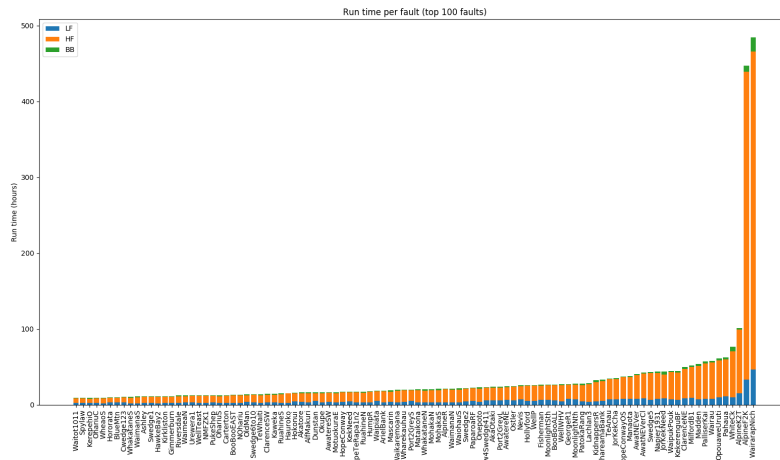
Utilisation Plot



Core hours per fault (top 100 faults)



## Run time per fault (top 100 faults)



## Tasks

- 1) adjust automated workflow to use the new folder structure
- 2) run a test case with new code to verify
- 3) install v18p0 to verify the params (check manually and not running them)
- 4) run HopeConwayOS
- 5) re-run all v18p6
- 6) fix the SQLite issue
- 6a) revamp the update script to queue all commands into queue folder
- 6b) edit the daemon to use new way of updating