

The New Zealand Inventory of Stopbanks (NZIS) & application for natural hazard exposure assessments.

Daniel Blake,

Geological Sciences, University of Canterbury

Kaley Crawford-Flett

QuakeCentre, University of Canterbury

Liam Wotherspoon

Civil & Environmental Engineering, University of Auckland

Eduardo Pascoal, Matthew Wilson

Geospatial Research Institute, University of Canterbury



National
SCIENCE
Challenges

RESILIENCE
TO NATURE'S
CHALLENGES

Kia manawaroa
– Ngā Akina o
Te Ao Tūroa



Stopbank failure- Edgcumbe, NZ, 2017 (Te Ara 2017)

Talk Outline

- Context
- Project Objectives
- Approach
- New Zealand Inventory of Stopbanks (NZIS v1.0)
 - current features
 - uncertainties & challenges
- Stopbank exposure to seismic hazards



Northland Flooding, 2007 (MCDEM 2007)

Talk Outline

- **Context**
- Project Objectives
- Approach
- New Zealand Inventory of Stopbanks (NZIS v1.0)
 - current features
 - uncertainties & challenges
- Stopbank exposure to seismic hazards



Northland Flooding in 2007 (MCDEM 2007)

Context

- Flooding is New Zealand's most frequent natural hazard
- Responsible for the highest number of civil defence emergencies
- Flooding is one of NZ's most costly natural hazards
- Severity and frequency of floods increasing



Flooding & forestry debris at Tolaga Bay property, 2018



Property owner amongst flood debris after Ex-cyclone Gita (Stuff 2018)

Context

- “Local risks are a local responsibility” (National CDEM Plan Order 2005)
- Local, regional, city and district councils largely responsible for daily management activities.
- Stopbanks provide a critical role in flood protection in all regions of NZ.
- Physical and engineering attributes **“vary across the country depending on past decisions, community expectations and the risk profile”** (MfE 2008)



Talk Outline

- Context
- **Project Objectives**
- Approach
- New Zealand Inventory of Stopbanks (NZIS v1.0)
 - current features
 - uncertainties & challenges
- Stopbank exposure to seismic hazards



Northland Flooding in 2007 (MCDEM 2007)

Project Objectives



- Produce a single, standardised, and spatially-referenced stopbank inventory for New Zealand.
- Characterise the stopbank network (e.g. height, type, geometry, location, design, service levels)
- Inform initial assessments of hazard exposure for the stopbank network.

Talk Outline

- Context
- Project Objectives
- **Approach**
- New Zealand Inventory of Stopbanks (NZIS v1.0)
 - current features
 - uncertainties & challenges
- Stopbank exposure to seismic hazards



Northland Flooding in 2007 (MCDEM 2007)

Approach

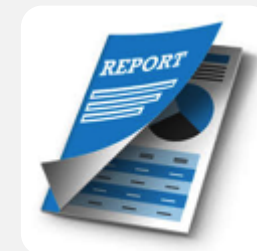


(Data Sources)

Publicly available LINZ dataset for NZ



Council websites & supporting reports



Approach

- Assign object identifier to each stopbank feature, maintaining original details
- Assess for different attributes:
 - *physical location*
 - *dimensions*
 - *age and any degradation*
 - *construction type*
 - *foundation material & geology*
 - *design detailing*
 - *intended purpose*
 - *design flood & seismic capacity*
- Allocate consistent terms to individual stopbank features
- Consider age of obtained data.



Approach – seismic hazard data

- **Known active faults** – GNS Science (*Langridge et al. 2016*)
 - Proximities of 0-5, 5-15, 15-20, 20-50 and 50-100 m considered
- **Ground shaking** – National Seismic Hazard Model & Cybershake NZ v17.9 (*Stirling et al. 2012; Tarbali et al. 2018*)
 - PGA and PGV with a 10% chance of exceedance in any 50 years (i.e. 500 year return period)
- **Liquefaction susceptibility** – global model with 14 proxies (*Zhu et al. 2017*)
- **Landslide susceptibility** – global empirical seismically-induced landslide model (*Jessee et al. 2018*)



Talk Outline

- Context
- Project Objectives
- Approach
- **New Zealand Inventory of Stopbanks (NZIS v1.0)**
 - **current features**
 - **uncertainties & challenges**
- Stopbank exposure to seismic hazards



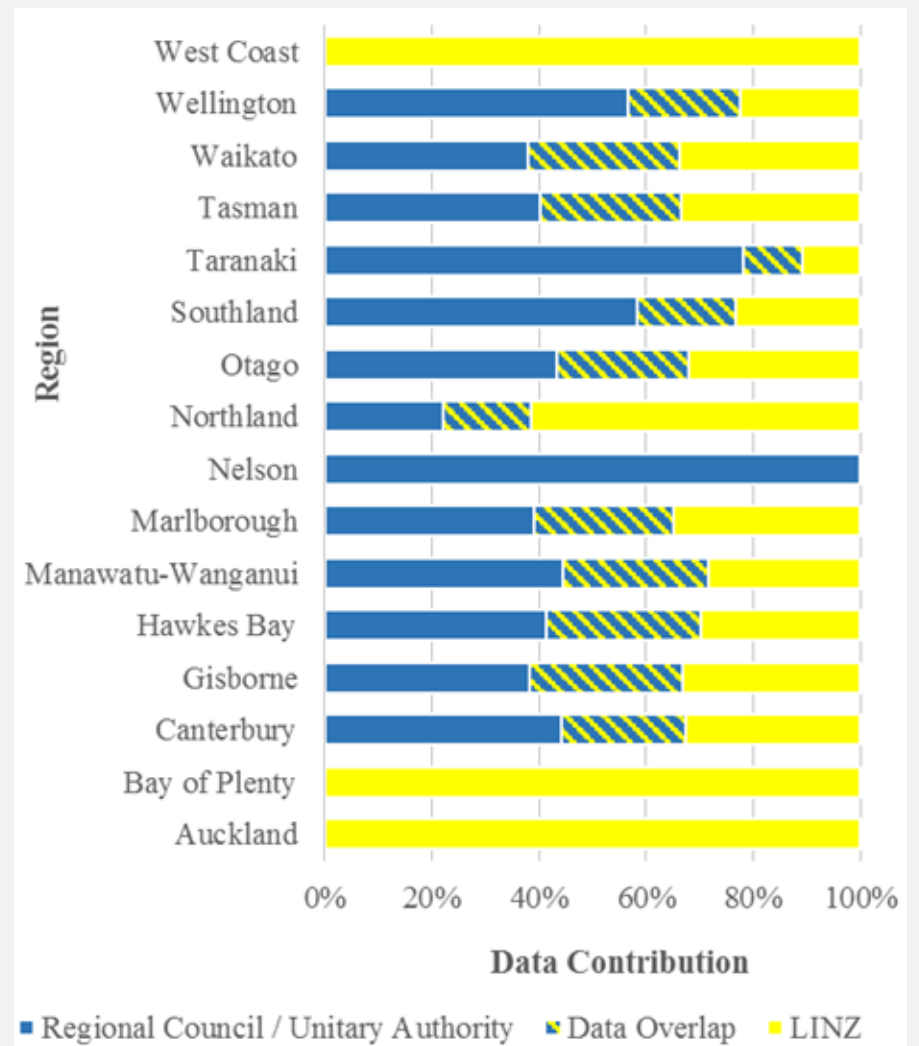
Northland Flooding in 2007 (MCDEM 2007)

New Zealand Inventory of Stopbanks: NZIS (v1.0)



- Data provided by 13 (out of 16) regional councils / unitary authorities
- Total records: 5,978
- Total length of stopbank data: 6,700 km
- **Total length of stopbanks: 4921 km**
- Limited information on attributes
 - *Width known for 25% of records*
 - *Height known for 19% of records*
 - *Other attributes much more limited*

New Zealand Inventory of Stopbanks: NZIS (v1.0)



New Zealand Inventory of Stopbanks: NZIS (v1.0)

Uncertainties and challenges

- **Completeness**
 - *inconsistencies in data – incomplete*
 - *privately-owned stopbanks not considered: Thomas Wallace (ME candidate)*
- **Quality**
 - *errors identified and corrected where possible*
 - *relevance to current time (old data)*
- **Terminology**
 - *Missing metadata and inconsistencies in terminology between councils.*

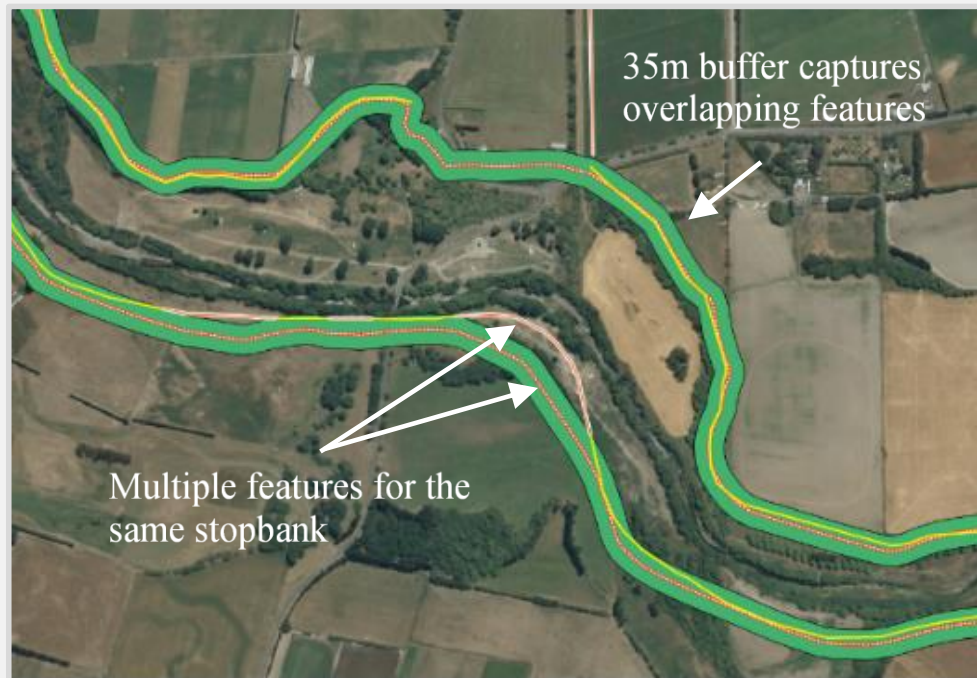


(Scott Olson / Getty Images 2011)

New Zealand Inventory of Stopbanks: NZIS (v1.0)

Uncertainties and challenges (*continued*)

- Example of duplicated and overlapping stopbank features:



Solution:

- 35m buffer distance for identification
- Comparison to satellite imagery
- Prioritisation of features with greater geospatial information

Talk Outline

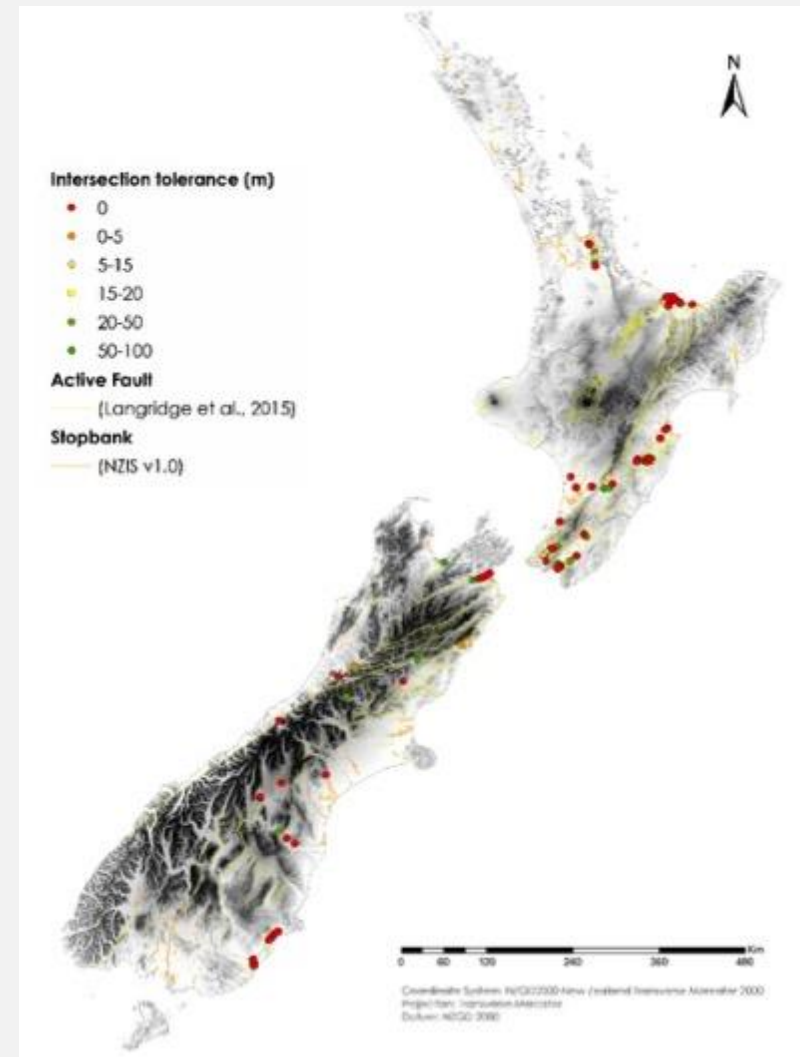
- Context
- Project Objectives
- Approach
- New Zealand Inventory of Stopbanks (NZIS v1.0)
 - current features
 - uncertainties & challenges
- **Stopbank exposure to seismic hazards**



Northland Flooding in 2007 (MCDEM 2007)

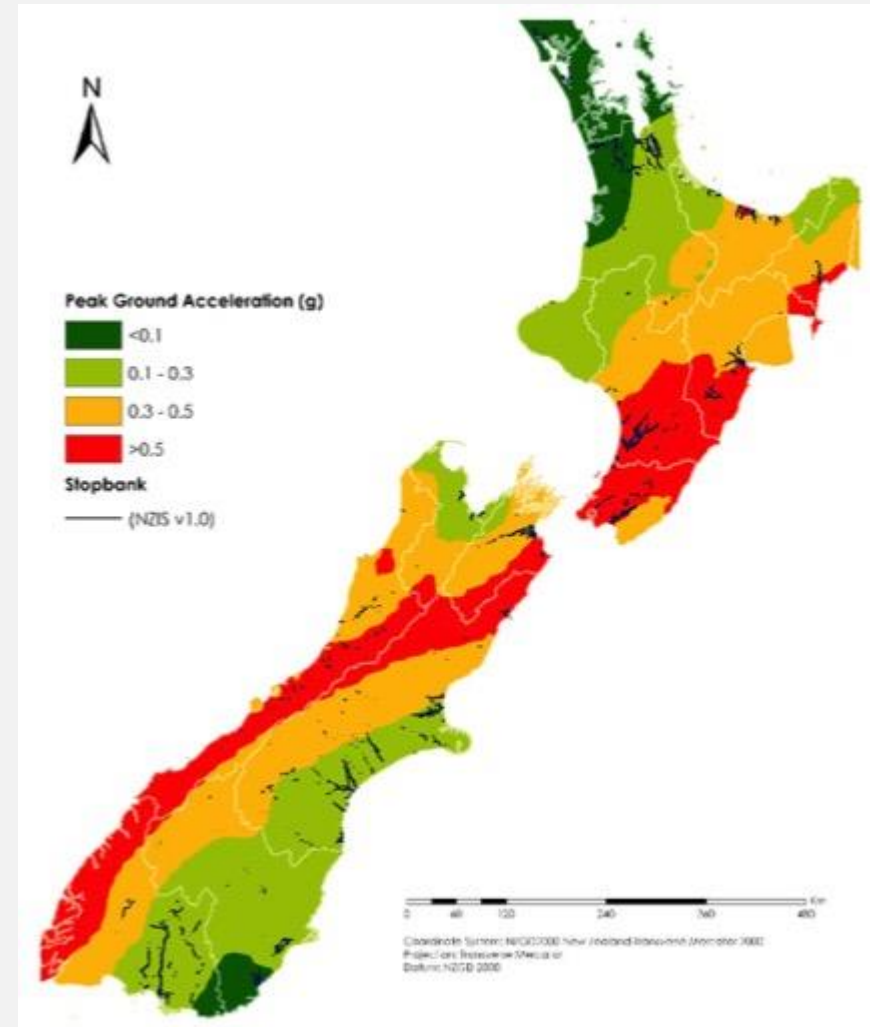
Exposure to seismic hazards – active faults

- 186 km of catalogued stopbank length <5 m from known active faults
- 1100 km within 100 m
- 73% of these faults with a very high to moderate potential for surface rupture are within Southland
- 16% of stopbanks within 100 m of active faults are in Wellington.



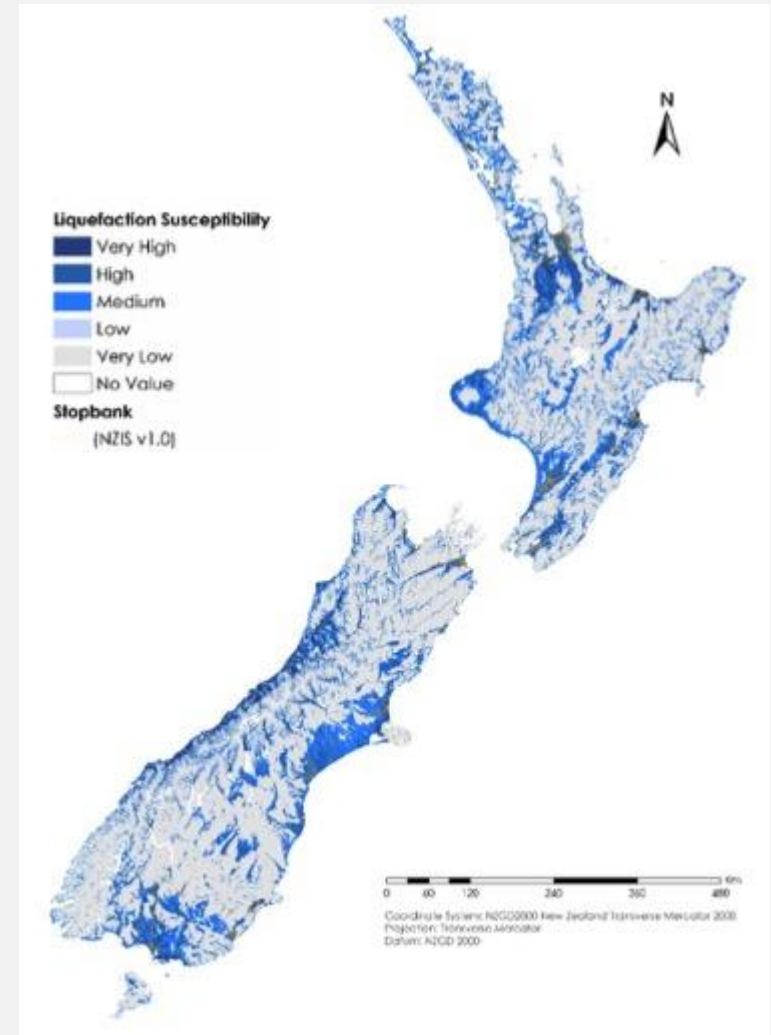
Exposure to seismic hazards – PGA & PGV

- 27% of all catalogued stopbanks are exposed to PGAs > 0.5 g for 500 year return period ground shaking
- 8% exposed to PGVs > 50 m/s
- Regions with greatest length of stopbanks exposed to strongest ground shaking are Manawatu-Wanganui, Wellington and Hawkes Bay.



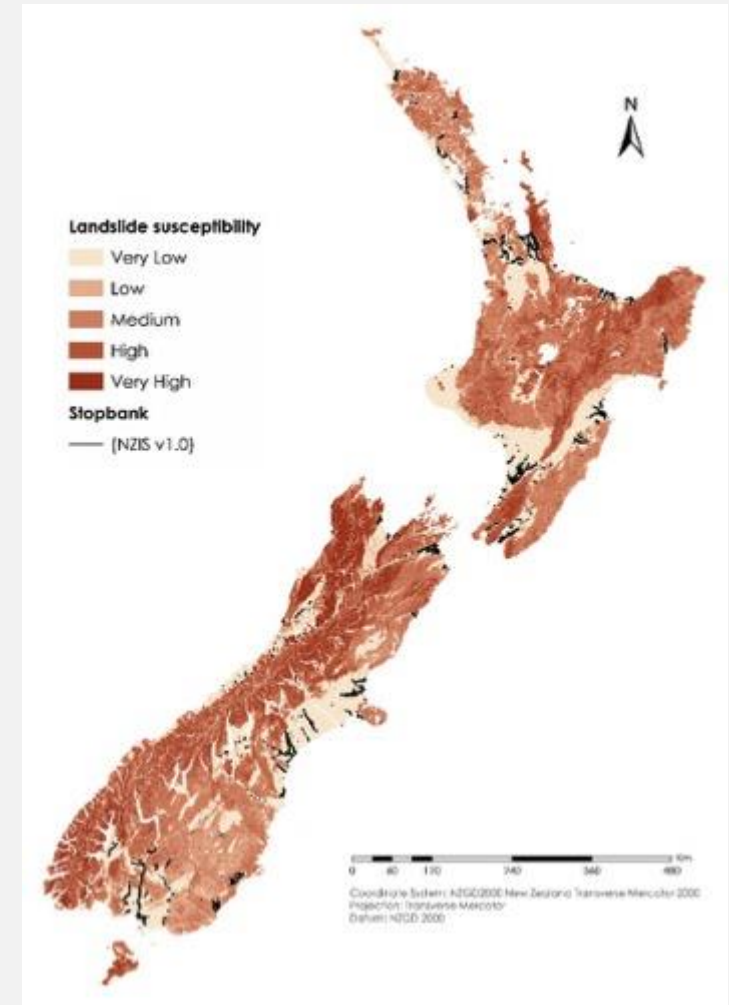
Exposure to seismic hazards – Liquefaction

- 80% of all catalogued stopbanks in areas of either 'very high' or 'high' liquefaction susceptibility.
- More evenly distributed across different regions



Exposure to seismic hazards – Landslides

- <0.2% stopbanks located in areas of 'very high' or 'high' landslide susceptibility
- 2.5% located in areas of medium landslide susceptibility
- Mostly in Bay of Plenty and Waikato



Summary

- NZIS v1.0 formed by combining LINZ and regional data - 4921 km
- Uncertainties associated with completeness, quality & terminology
- Many attribute fields but very limited data available
- Preliminary seismic hazard exposure assessment conducted
- Assists wider flood risk and emergency management planning, infrastructure investment decisions and resilience activities.

