

Infrastructure failure propagations and recovery strategies from an Alpine Fault earthquake scenario

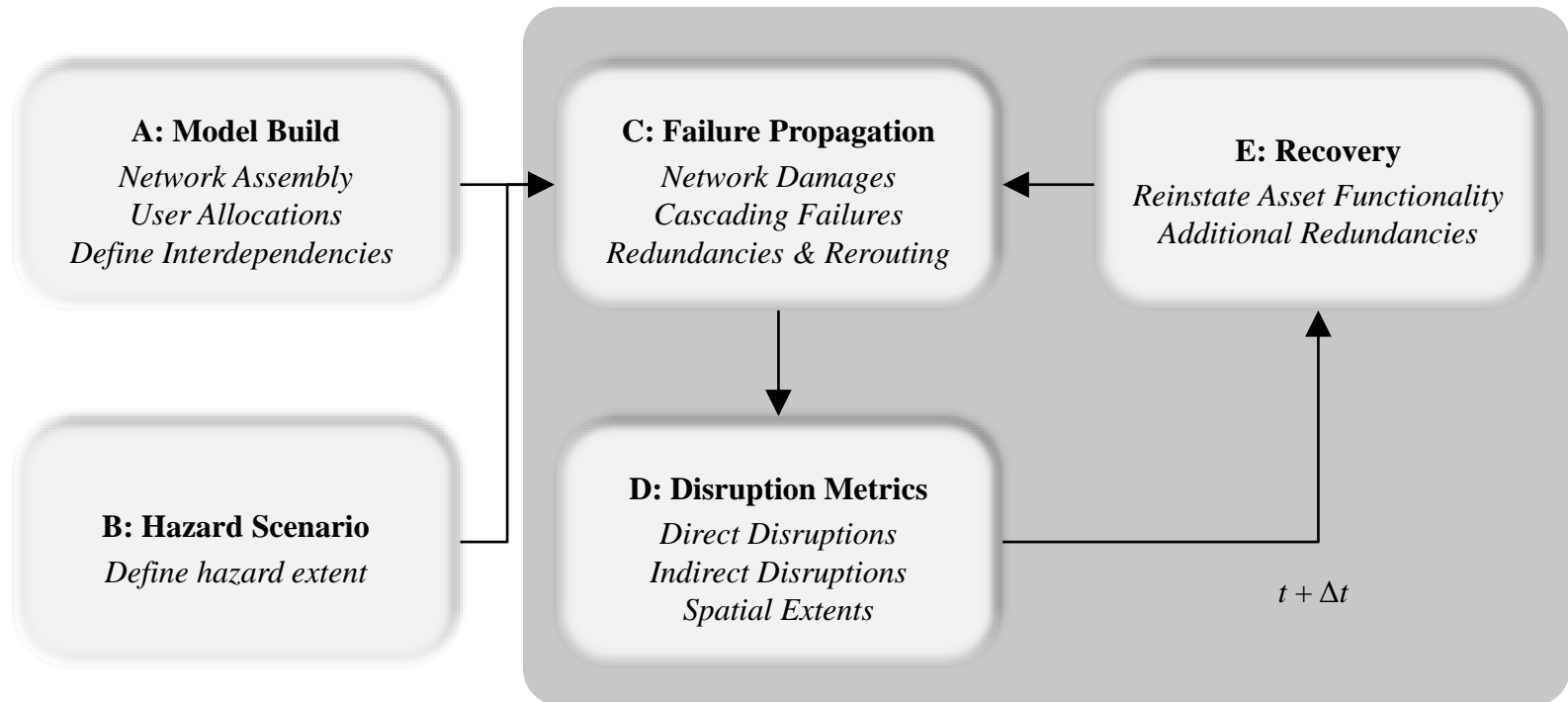
Conrad Zorn¹ (conrad.zorn@ouce.ox.ac.uk)
Alistair Davies² (alistair.davies@pg.canterbury.ac.nz)
Tom Robinson³
Raghav Pant¹
Liam Wotherspoon⁴
Scott Thacker⁵

¹ University of Oxford, UK
² University of Canterbury
³ Durham University, UK
⁴ University of Auckland
⁵ UNOPS

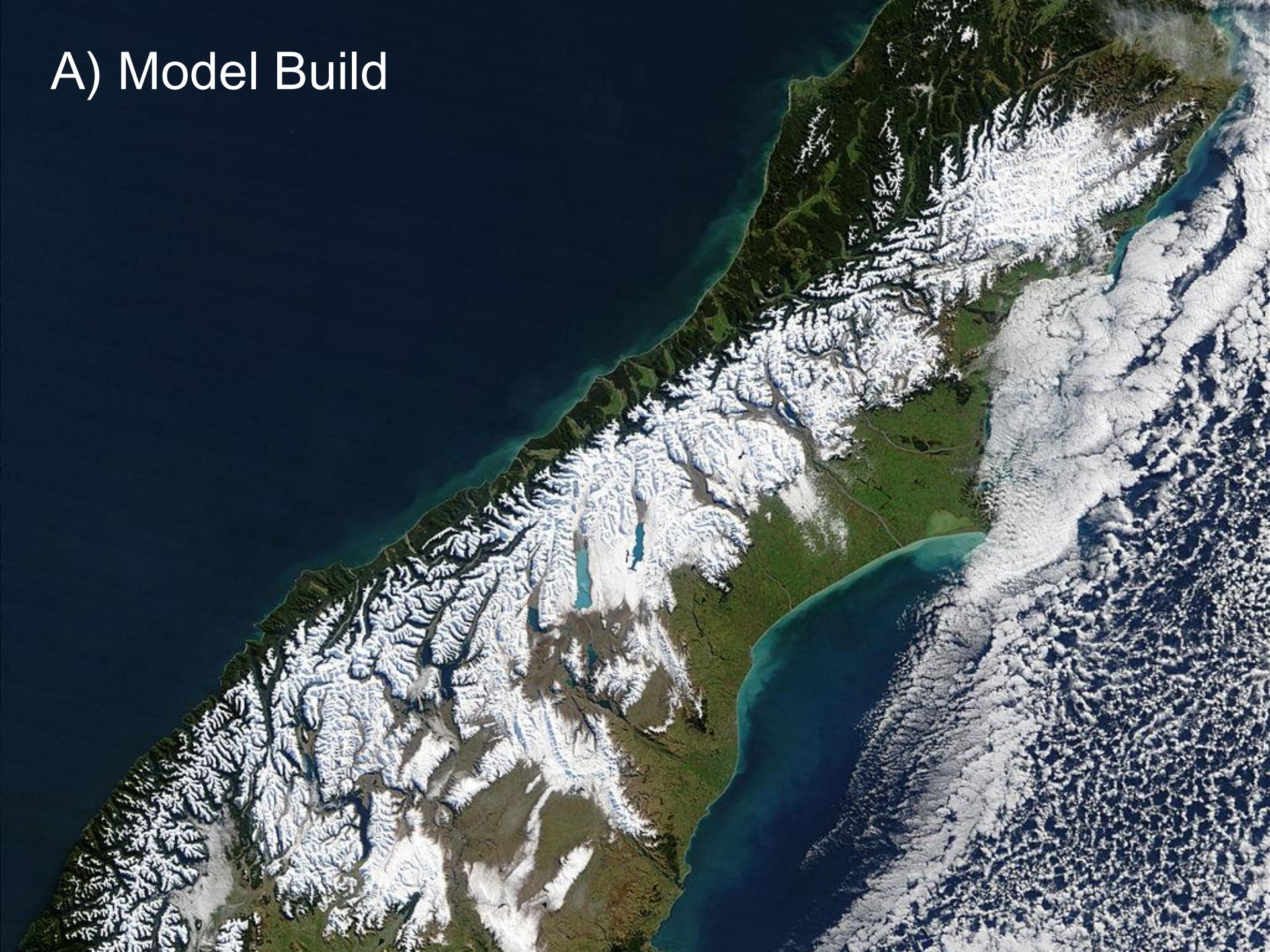
16TH EUROPEAN CONFERENCE ON
EARTHQUAKE THESSALONIKI
ENGINEERING 18 - 21 JUNE 2018



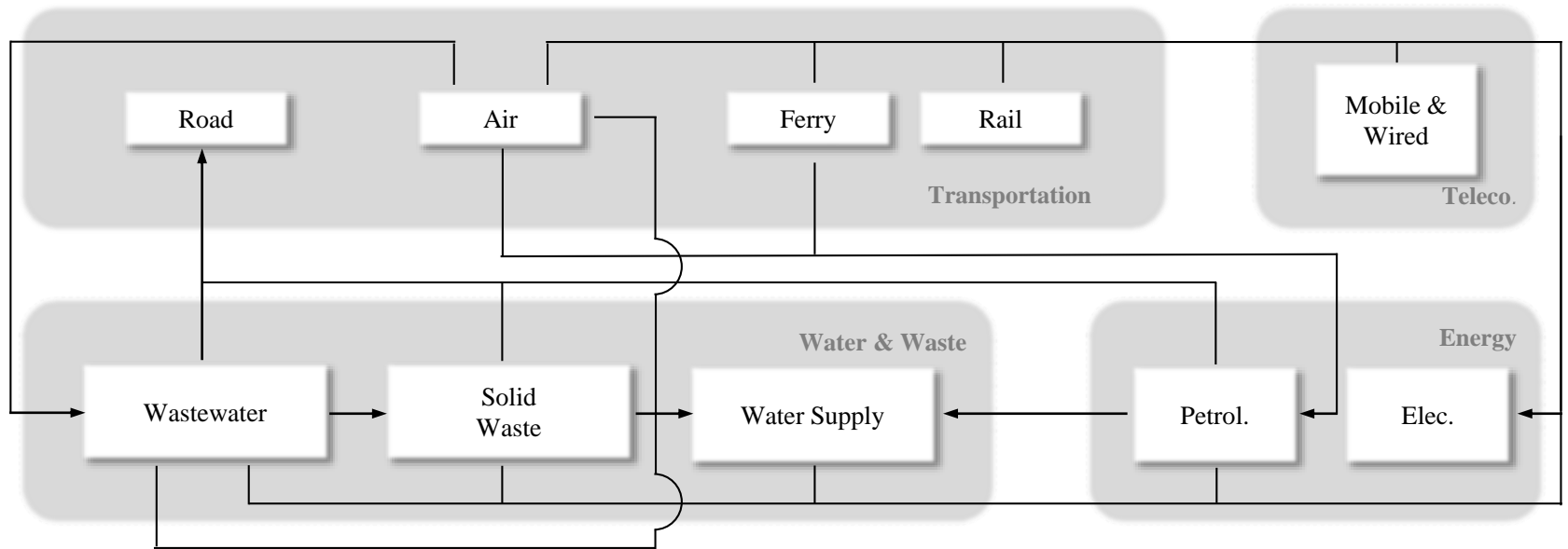
Integrated framework



A) Model Build



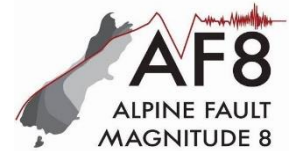
Sector	Infrastructure	Assets		
Energy	Electricity	Generators, Transmission Substations, Distribution Substations, Power Grid		
	Petroleum	Bulk Supply Points, Petrol Stations, Delivery Routes		
Water & Waste	Water Supply	Sources, Treatment Plants, Pump Stations, Reservoirs, Pipes		
	Wastewater	Pump Stations, Treatment Plants, Pipes		
	Solid Waste	Transfer Stations, Landfills, Delivery Routes		
Telecom.	Mobile	Transmitters, Connections to Exchanges		
	Wired	Cabinets, Exchanges, Connections, Undersea Cables		
Transport	Air	Airports		
	Ferry	Terminals		
	Road	State Highways		
	Rail	Stations and Tracks		
	<i>Generation</i>			
	<i>Transmission</i>			
	<i>Distribution</i>			
	<i>Customer Allocation</i>			



B) Hazard Scenario



The AF8+ hazard scenario



The AF8+ hazard scenario builds on the Project AF8 scenario. The scenario was extended in time from 7 days to 10 years, with the following hazard inputs:

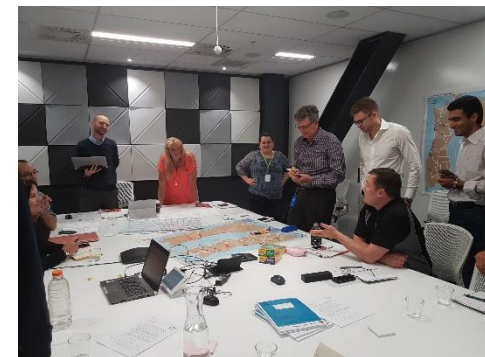
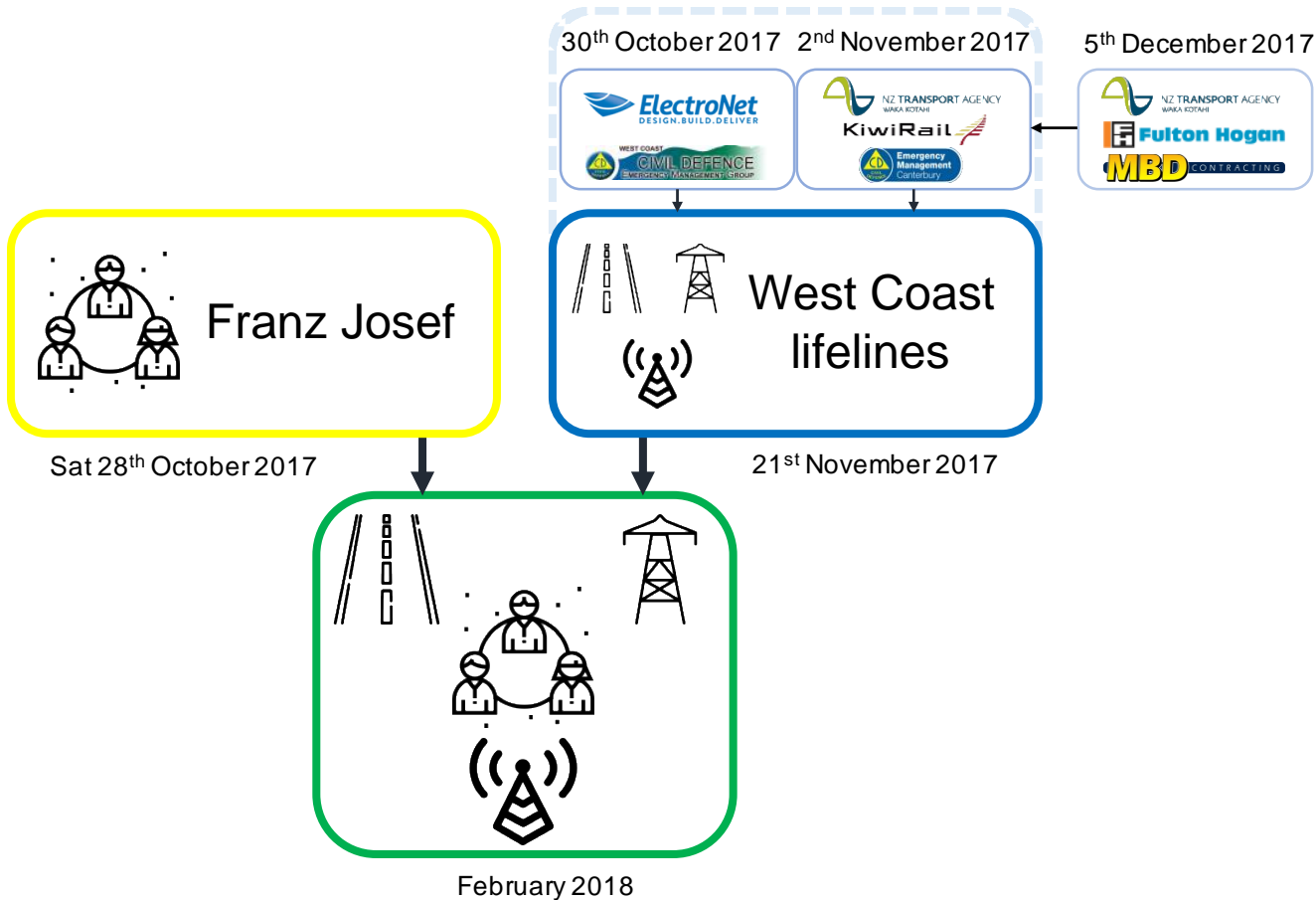
- Earthquake rupture
- Earthquake shaking
- Aftershocks
- Co-seismic landslides
- Rainfall



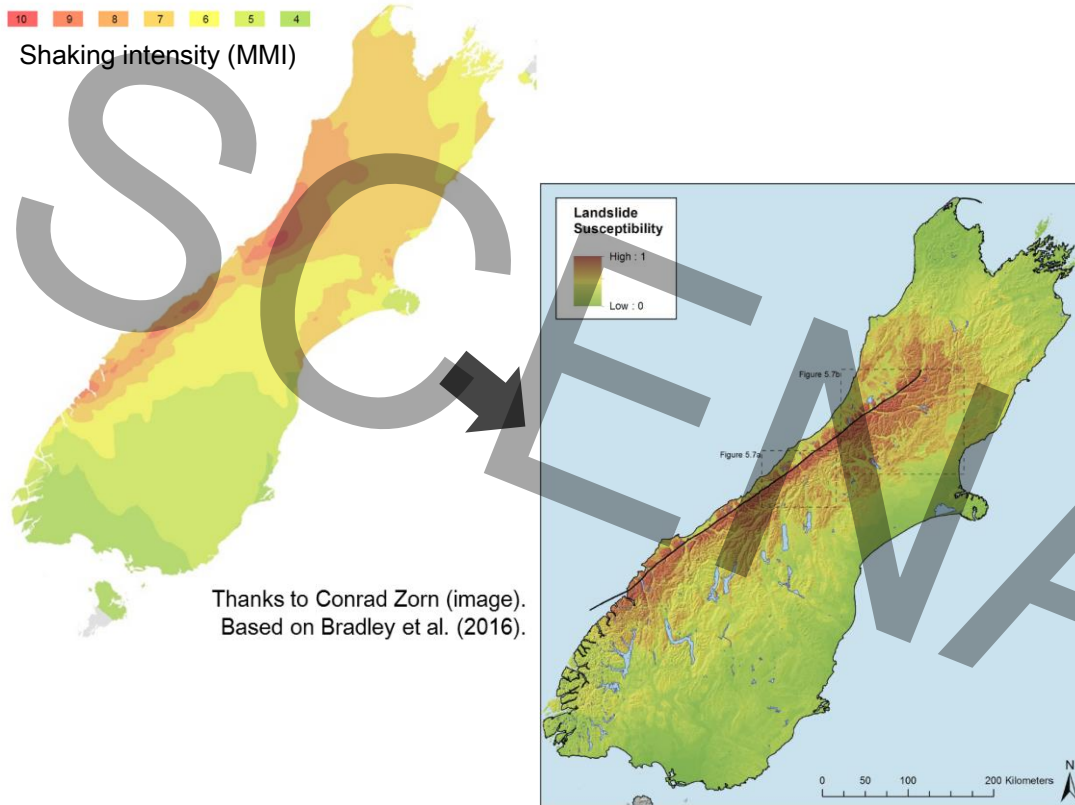
Increasing resilience for potentially isolated communities by improving post-disaster service levels

⚙️ Improve post-disaster planning

Use a scenario as a boundary object through a series of workshops



1) Modelled shaking is used to model landslides

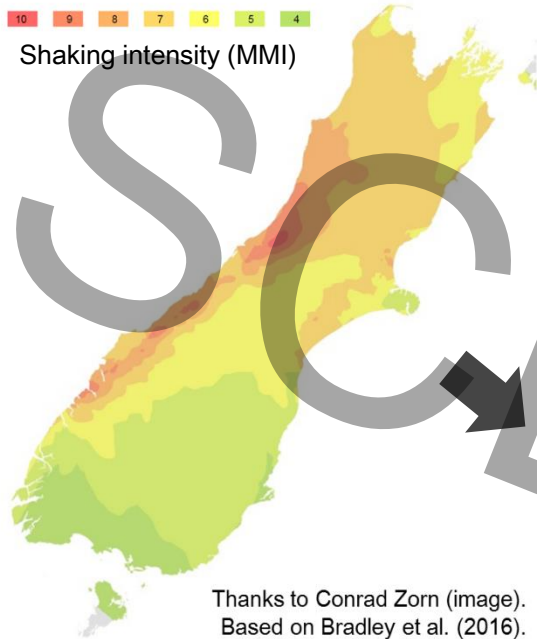


Disclaimer

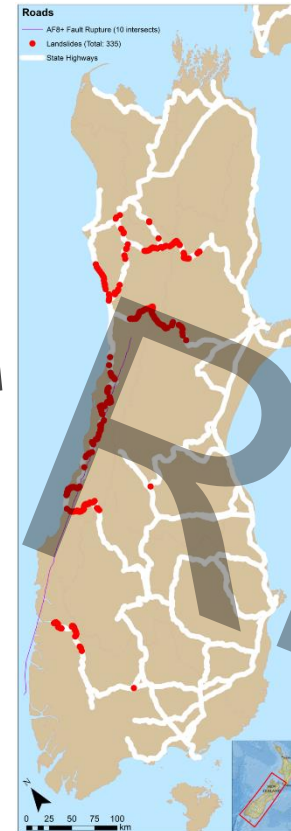
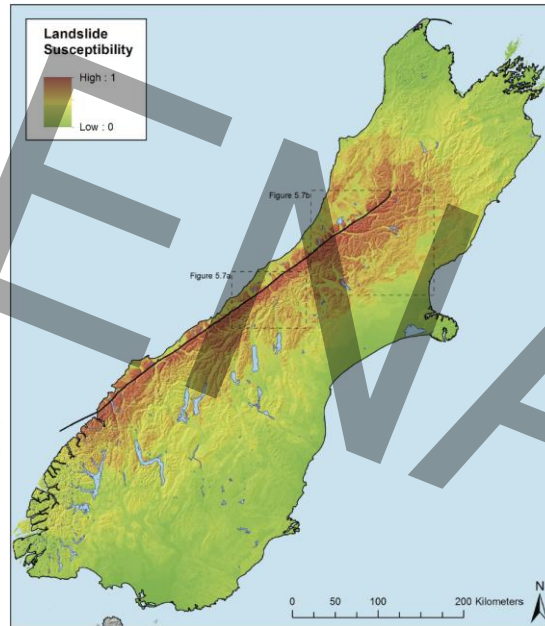
The AF8+ scenario is designed to provide an example of an extreme earthquake for response and recovery planning in the South Island of New Zealand, with a focus on the West Coast and Franz Josef township. A realistic but extreme case scenario, detailing earthquakes, ground motions, landslides, and transposed real-world aftershock and rainfall sequences, was compiled using the best scientific knowledge currently available. It is important to stress these maps detail expectations based on individual and collective understandings of the AF8+ hazard scenario, which was co-created into an impacts scenario within workshops. Recovery strategies and service levels were estimated for this AF8+ scenario only.

It is vital to understand that the AF8+ scenario is NOT A PREDICTION of what will happen during and after the next major earthquake (which may not be on the Alpine Fault). The underlying philosophy is that if we plan for the extreme case, we certainly improve our ability to cope with less severe events ("expect the worst, hope for the best"). For more information, please contact alister.davies@pg.canterbury.ac.nz.

2) Infrastructure overlaid to show landslide impacts



Thanks to Conrad Zorn (image).
Based on Bradley et al. (2016).

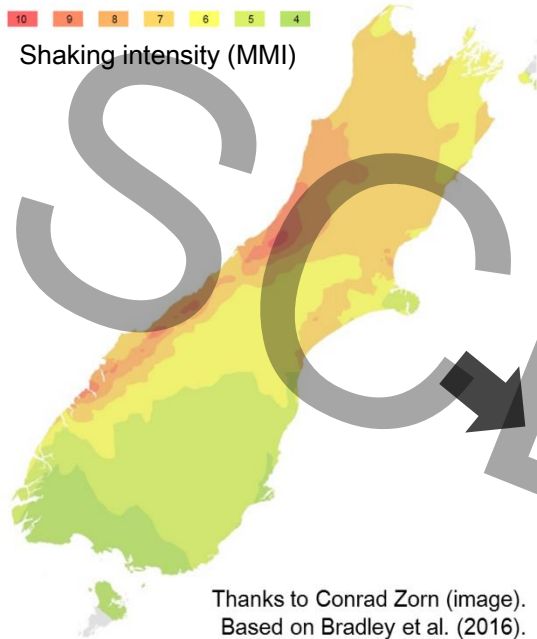


Disclaimer

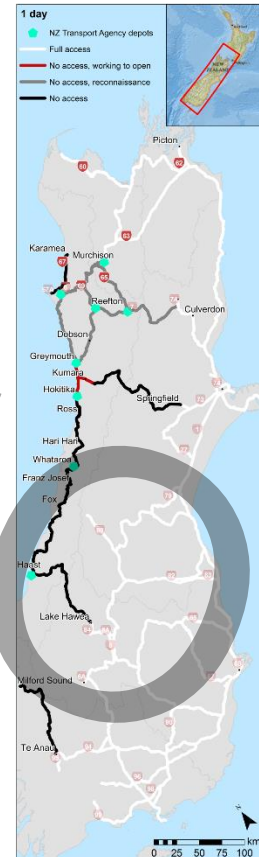
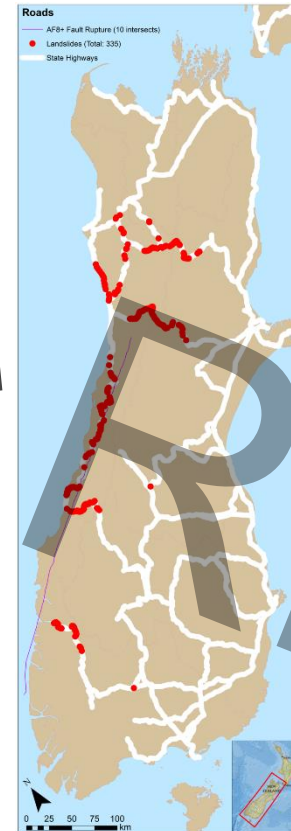
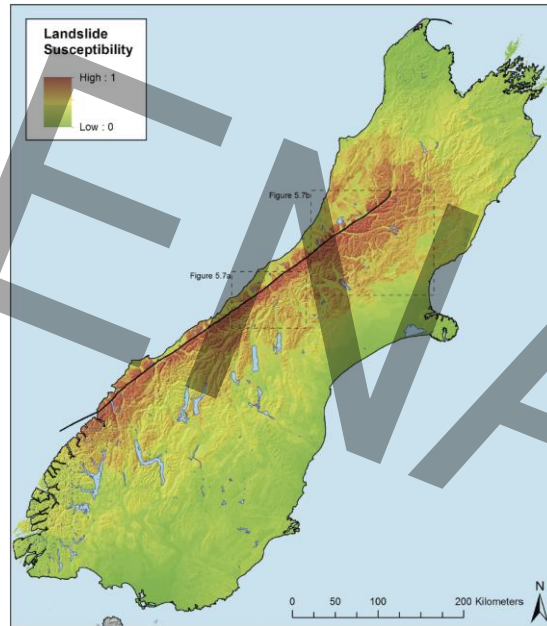
The AF8+ scenario is designed to provide an example of an extreme earthquake for response and recovery planning in the South Island of New Zealand, with a focus on the West Coast and Franz Josef township. A realistic but extreme case scenario, detailing earthquakes, ground motions, landslides, and transposed real-world aftershock and rainfall sequences, was compiled using the best scientific knowledge currently available. It is important to stress these maps detail expectations based on individual and collective understandings of the AF8+ hazard scenario, which was co-created into an impacts scenario within workshops. Recovery strategies and service levels were estimated for this AF8+ scenario only.

It is vital to understand that the AF8+ scenario is NOT A PREDICTION of what will happen during and after the next major earthquake (which may not be on the Alpine Fault). The underlying philosophy is that if we plan for the extreme case, we certainly improve our ability to cope with less severe events ("expect the worst, hope for the best"). For more information, please contact alistair.davies@pg.canterbury.ac.nz.

3) In workshops, infrastructure stakeholders used the hazard and impact maps to estimate level of service



Thanks to Conrad Zorn (image).
Based on Bradley et al. (2016).

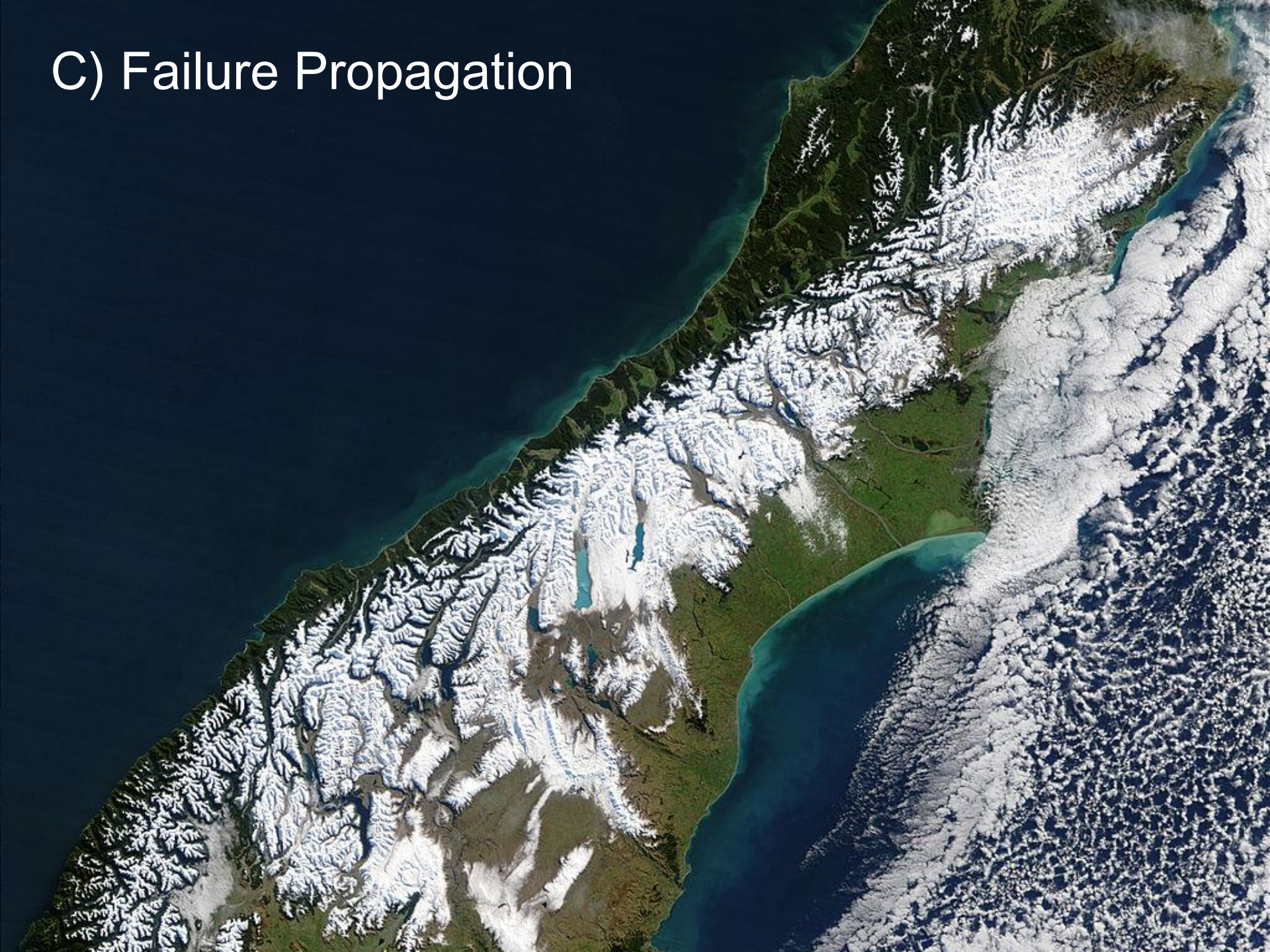


Disclaimer

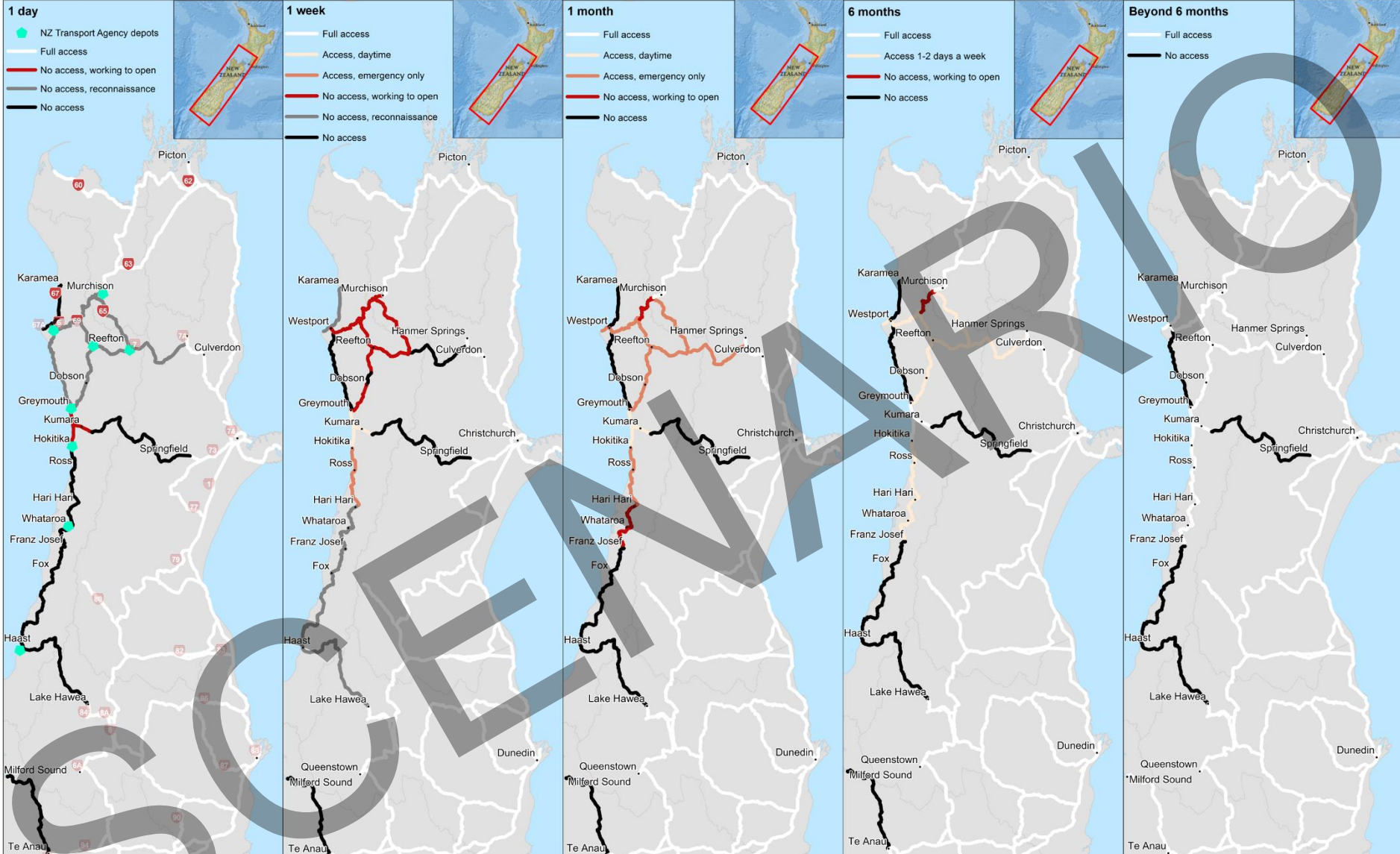
The AF8+ scenario is designed to provide an example of an extreme earthquake for response and recovery planning in the South Island of New Zealand, with a focus on the West Coast and Franz Josef township. A realistic but extreme case scenario, detailing earthquakes, ground motions, landslides, and transposed real-world aftershock and rainfall sequences, was compiled using the best scientific knowledge currently available. It is important to stress these maps detail expectations based on individual and collective understandings of the AF8+ hazard scenario, which was co-created into an impacts scenario within workshops. Recovery strategies and service levels were estimated for this AF8+ scenario only.

It is vital to understand that the AF8+ scenario is NOT A PREDICTION of what will happen during and after the next major earthquake (which may not be on the Alpine Fault). The underlying philosophy is that if we plan for the extreme case, we certainly improve our ability to cope with less severe events ("expect the worst, hope for the best"). For more information, please contact alistair.davies@pg.canterbury.ac.nz.

C) Failure Propagation



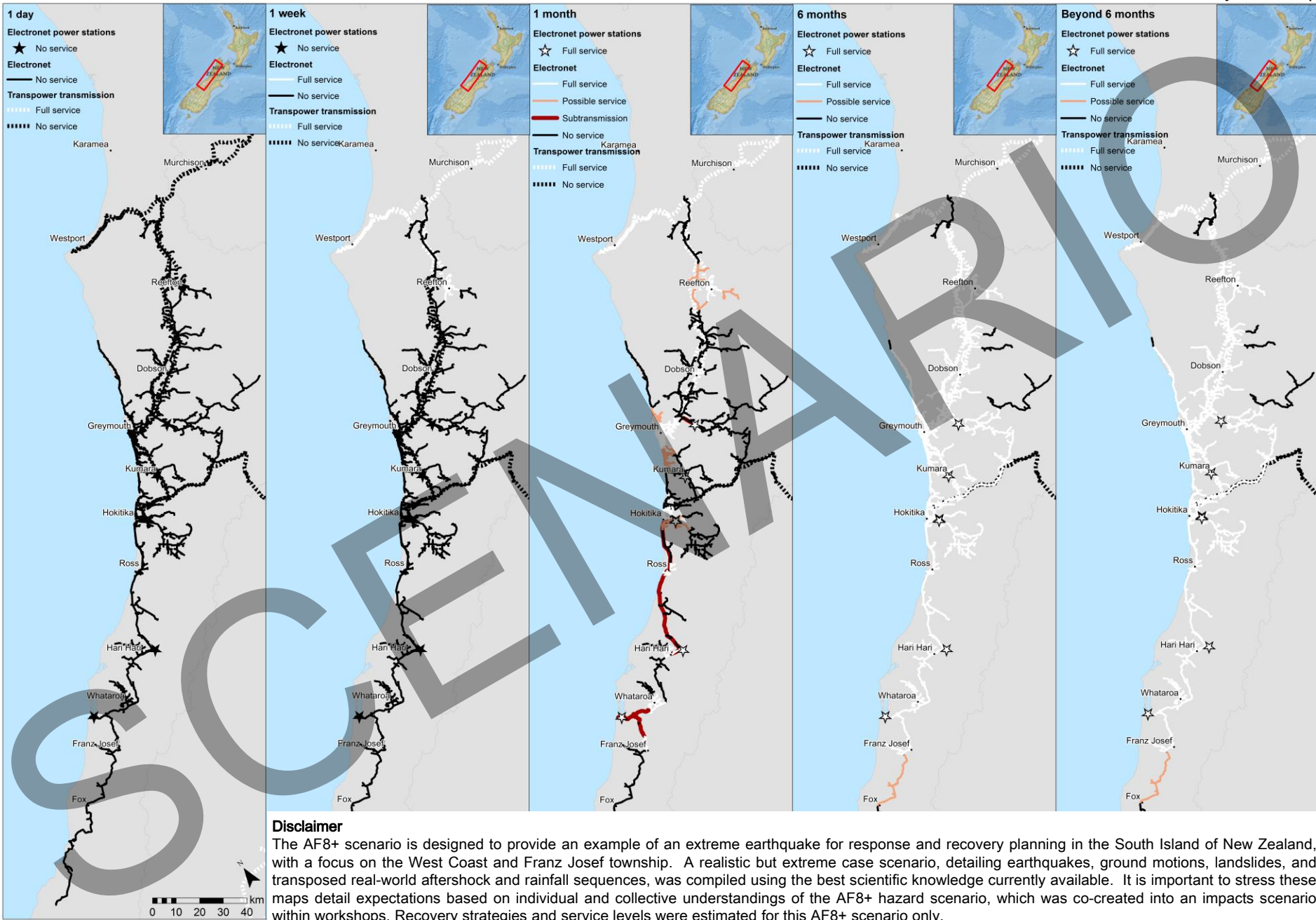
AF8+ scenario State Highway levels of service



Disclaimer

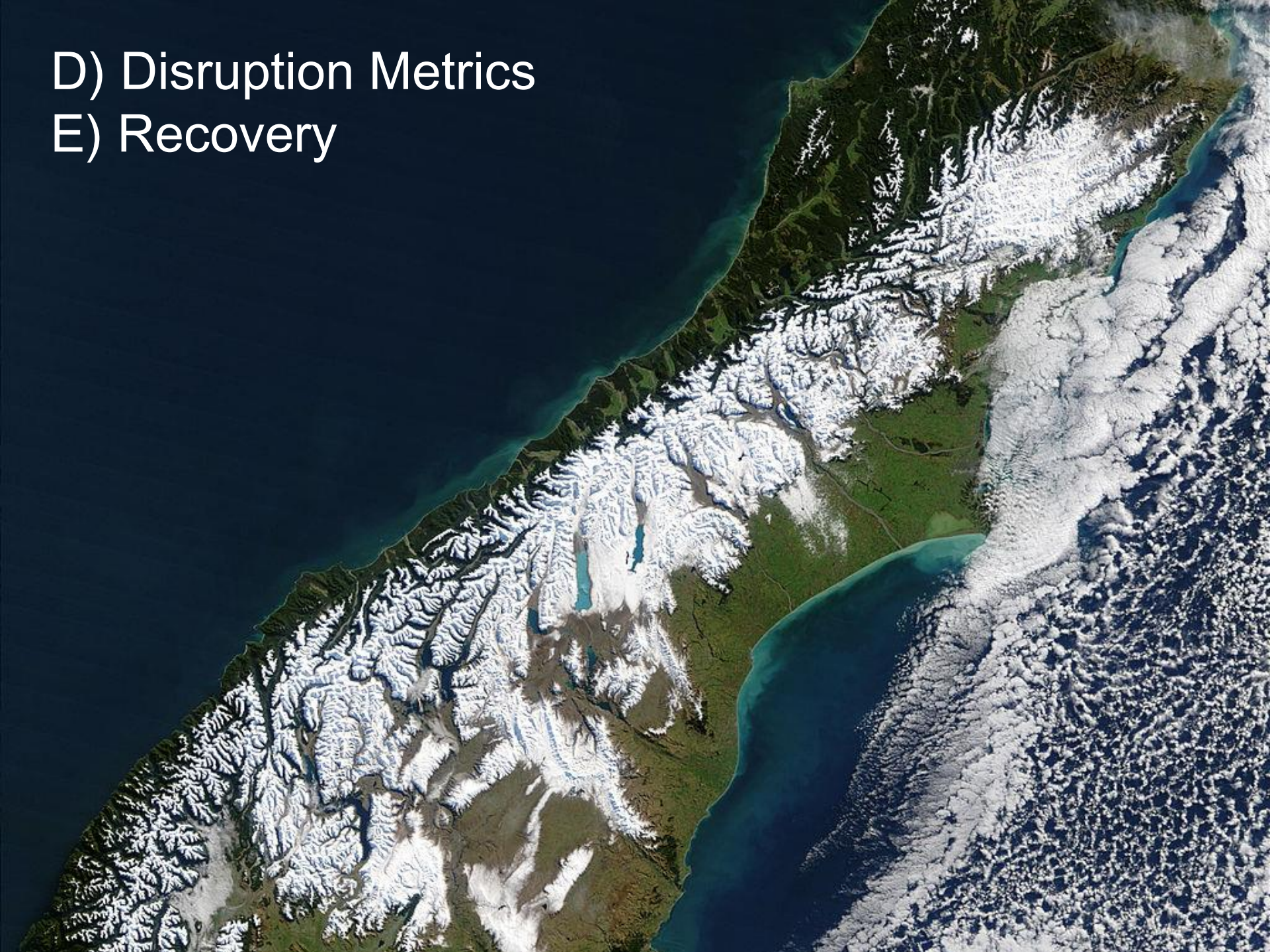
The AF8+ scenario is designed to provide an example of an extreme earthquake for response and recovery planning in the South Island of New Zealand, with a focus on the West Coast and Franz Josef township. A realistic but extreme case scenario, detailing earthquakes, ground motions, landslides, and transposed real-world aftershock and rainfall sequences, was compiled using the best scientific knowledge currently available. It is important to stress these maps detail expectations based on individual and collective understandings of the AF8+ hazard scenario, which was co-created into an impacts scenario within workshops. Recovery strategies and service levels were estimated for this AF8+ scenario only.

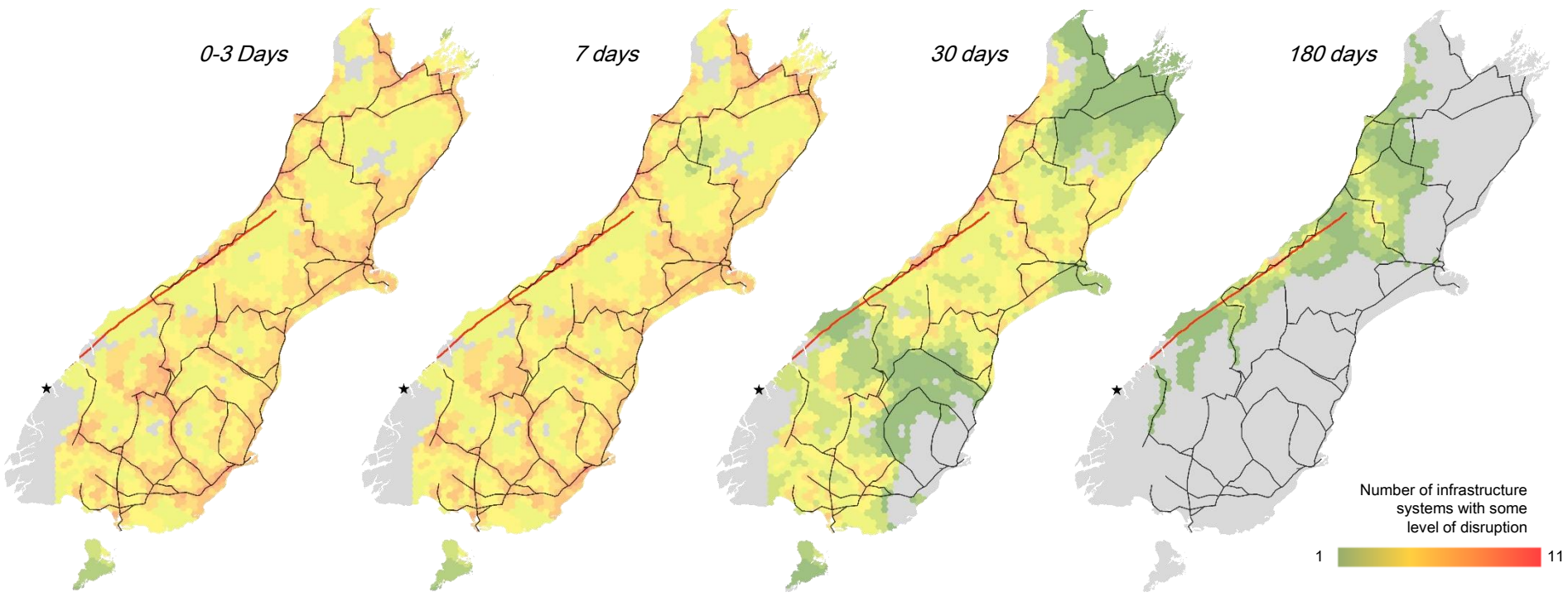
It is vital to understand that the AF8+ scenario is NOT A PREDICTION of what will happen during and after the next major earthquake (which may not be on the Alpine Fault). The underlying philosophy is that if we plan for the extreme case, we certainly improve our ability to cope with less severe events ("expect the worst, hope for the best"). For more information, please contact alistair.davies@pg.canterbury.ac.nz.



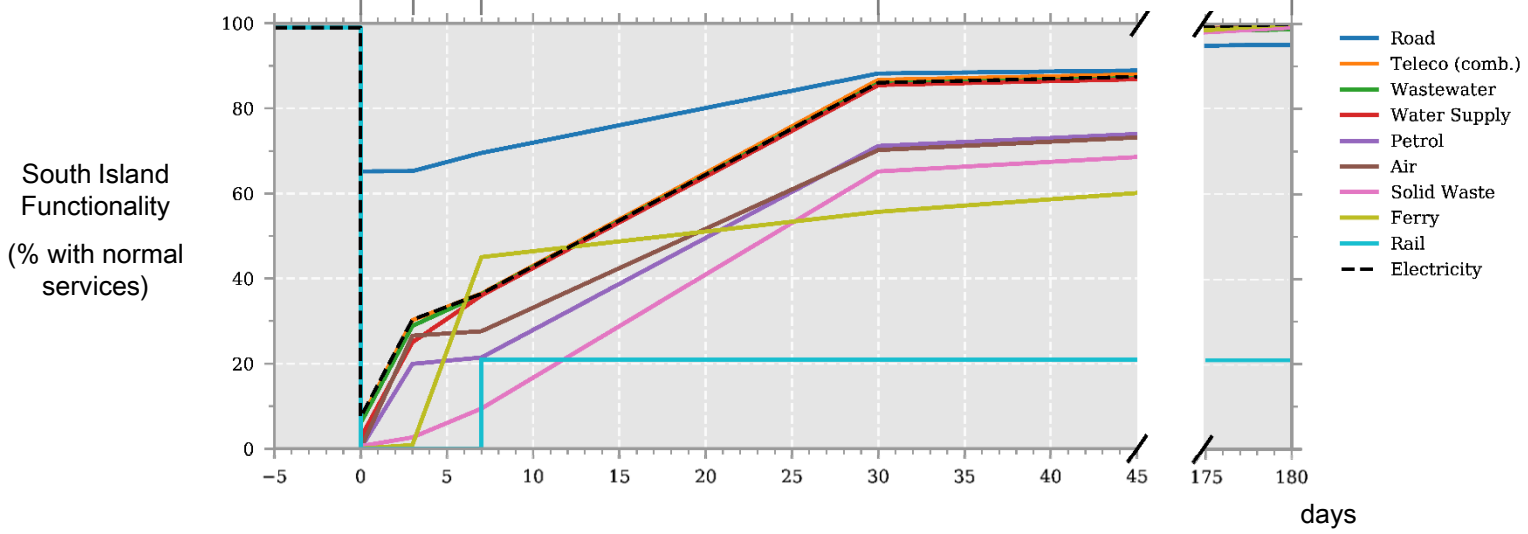
It is vital to understand that the AF8+ scenario is NOT A PREDICTION of what will happen during and after the next major earthquake (which may not be on the Alpine Fault). The underlying philosophy is that if we plan for the extreme case, we certainly improve our ability to cope with less severe events (“expect the worst, hope for the best”). For more information, please contact alistair.davies@pg.canterbury.ac.nz.

D) Disruption Metrics
E) Recovery





Directly caused disruptions: 42% 42% 31%
 Indirectly caused via dependencies: 58% 58% 69%



26% 74% 73% 27%

Future work

- Lifeline providers highlighted road dependency over electricity dependency.
 - Adopt 'dynamic' dependencies throughout stages of recovery – how to define, weight, and model these?
- End-to-end disaster preparedness assessment has substantial merit.
- Formal linking of hazard models would improve workflows.
- Infrastructure sector model improvements would also provide benefits.

Infrastructure failure propagations and recovery strategies from an Alpine Fault earthquake scenario

Conrad Zorn¹ (conrad.zorn@ouce.ox.ac.uk)
Alistair Davies² (alistair.davies@pg.canterbury.ac.nz)
Tom Robinson³
Raghav Pant¹
Liam Wotherspoon⁴
Scott Thacker⁵

¹ University of Oxford, UK
² University of Canterbury
³ Durham University, UK
⁴ University of Auckland
⁵ UNOPS

16TH EUROPEAN CONFERENCE ON
EARTHQUAKE THESSALONIKI
ENGINEERING 18 - 21 JUNE 2018

