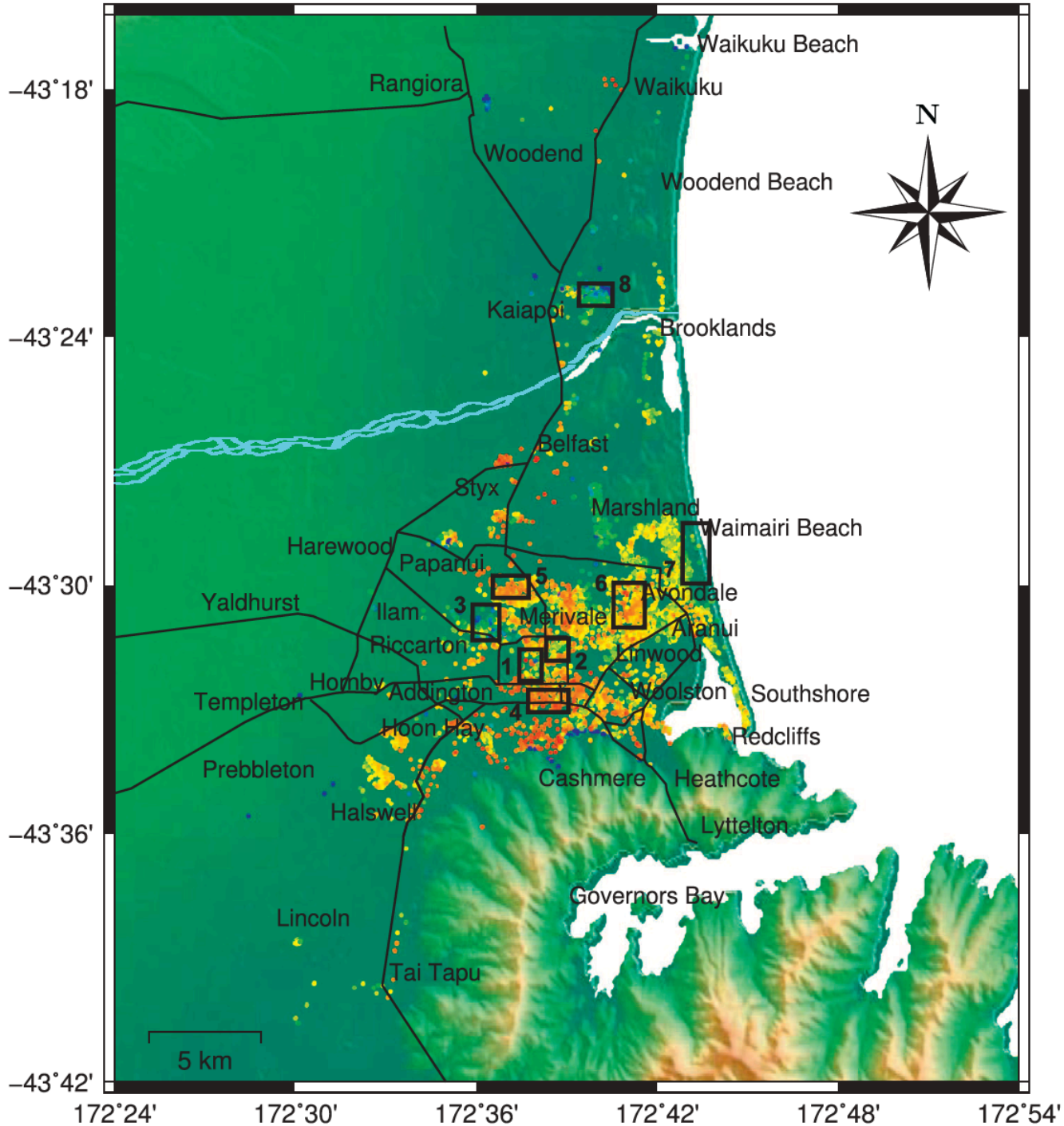


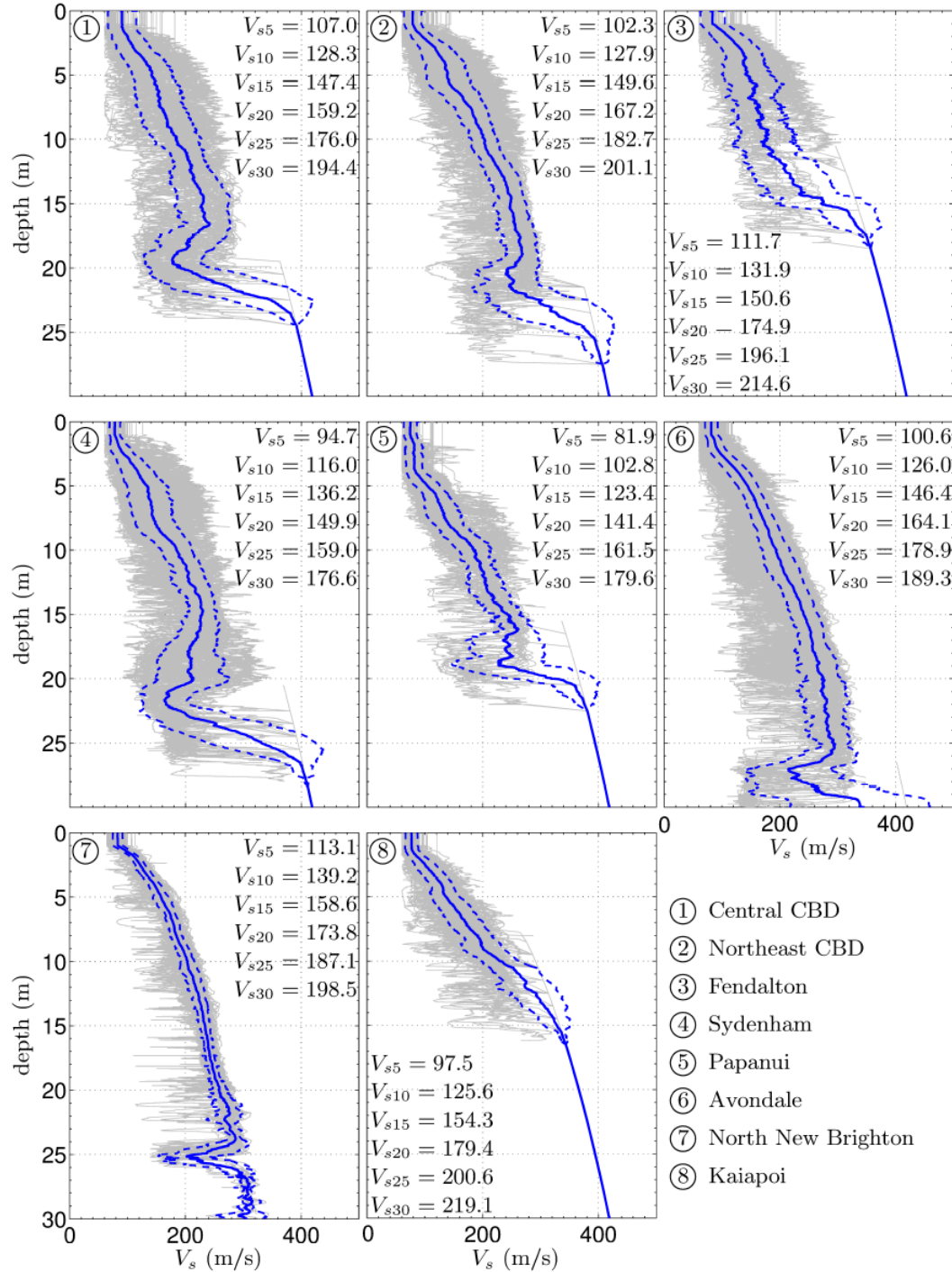
Utilization of Cybershake GMs

- Use the existing CPT dataset in Christchurch region to understand spatial variability in near surface soils
- Tie this in some way to the GM simulations. Either as some sort of way to do the high frequency part, a way to understand uncertainty/variability, or a way to explicitly consider site response
- Could perform a study to see how the spatial coherence of the simulated GMs across the region compares to empirical observations – important for analysis of distributed infrastructure

Utiliz



Utilizatic



Utilization of Cybershake GMs

