

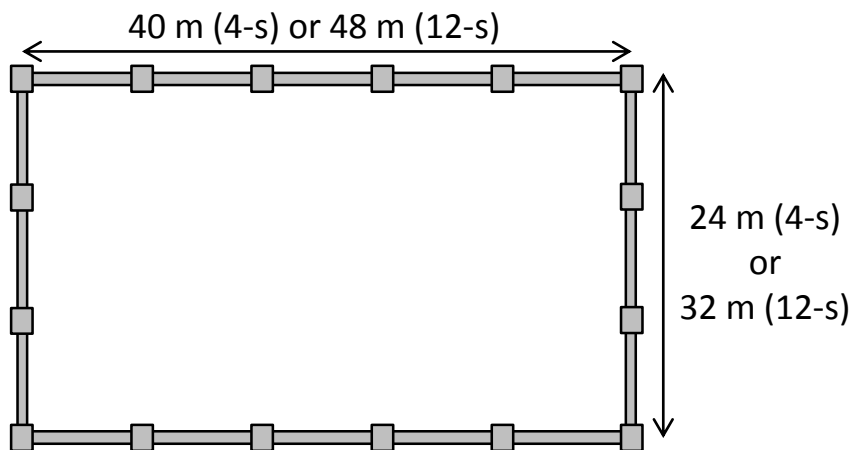
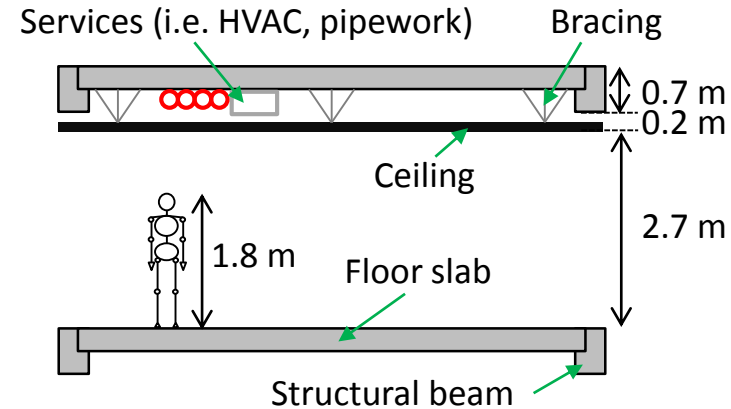
Case Study Buildings

Aim: To develop a “testbed” building layout for use in loss estimation studies on benefits of low-damage systems

- Stage 1: Create a floor layout that represents “typical” newly constructed buildings
 - Obtain building plans for newly constructed buildings
 - Use plans to develop a “typical” layout with input from architects
- Stage 2: Obtain information required to estimate damage and losses
 - Quantify density of components
 - Determine “typical” detailing of components
 - Identify if any existing fragility functions from overseas may be used if detailing is similar
 - Develop loss functions for components

Case Study Buildings

- First case to be examined:
 - 4 storey office building
 - 24 m by 40 m rectangular plan
 - New construction
- 12 storey office and 4 storey residential to follow



Case Study Buildings

- Stage 1: Identify newly constructed buildings that are similar to desired case study building



109 Cashel Street



161 Cashel Street



293 Durham Street



71 Gloucester Street



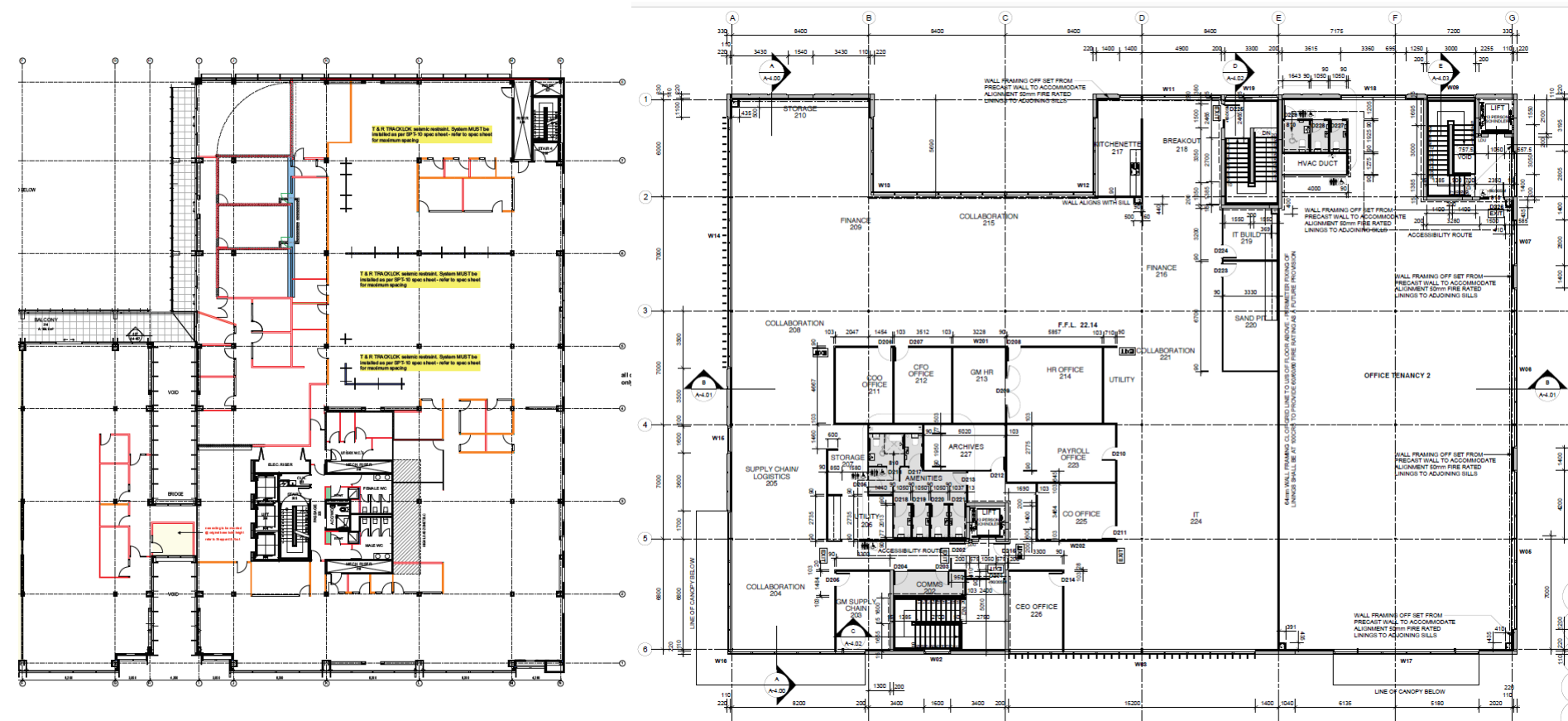
200 Tuam Street



229 Tuam Street

Case Study Buildings

- Stage 1: Requested and obtained building plans from council



Case Study Buildings

- Stage 1: Develop a “typical” floor plan with input from architects

