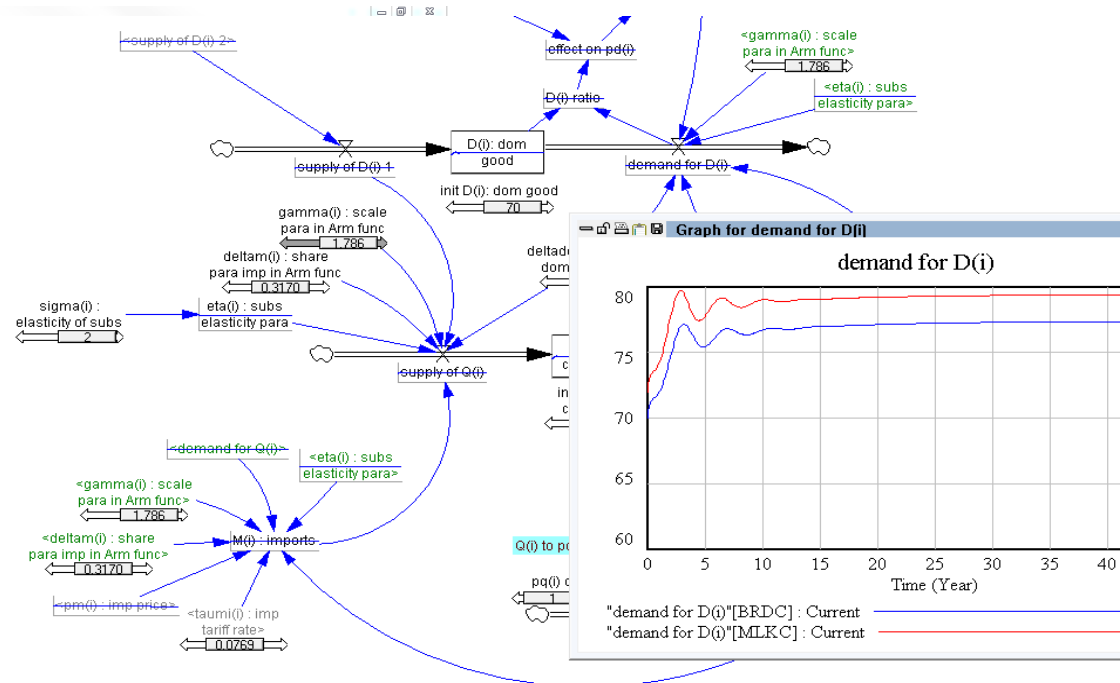
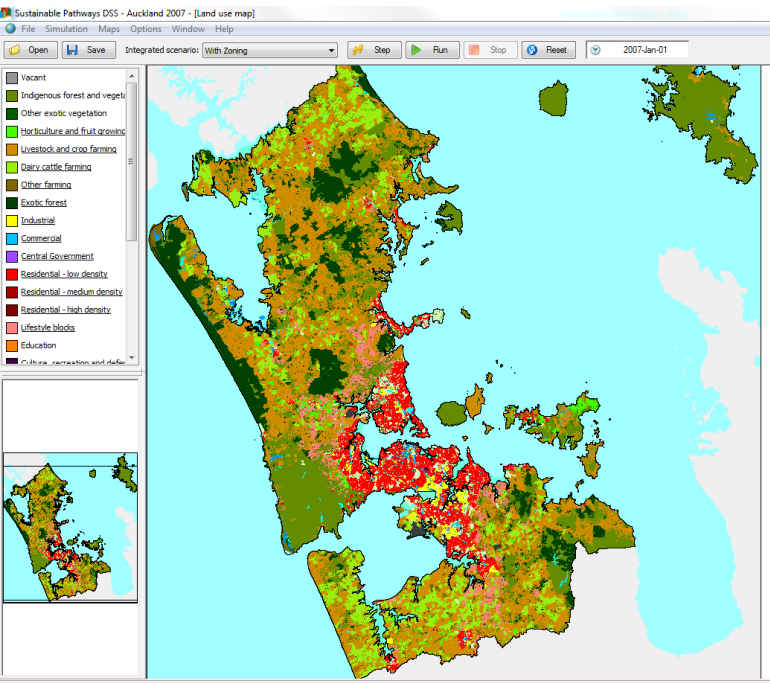


Assessing the long-term impacts of natural hazard events using integrated land use - economic - transport models



Sustainable Pathways II

2009 to 2015 MBIE funded research programme focused on achieving sustainable urban futures (\$3.8 million over 6 years)

Led by Garry McDonald (Market Economics), Hedwig van Delden (RIKS), Regan Solomon (Auckland Council), Melanie Thornton (Greater Wellington), Beat Huser (Waikato), Marjan van den Belt (Massey University)

Key Output: Integrated Scenarios Explorer



Ministry of Business,
Innovation & Employment



Economics of Resilient Infrastructure

Economics of Resilient Infrastructure, \$2.8m
MBIE programme, 2012-16

Led by Garry McDonald, Hedwig van Delden,
Michele Daly (GNS) and Erica Seville (ResOrgs)

Key Outputs: MERIT and Spatial MERIT



Resilience to Nature's Challenges

Urban Workstream

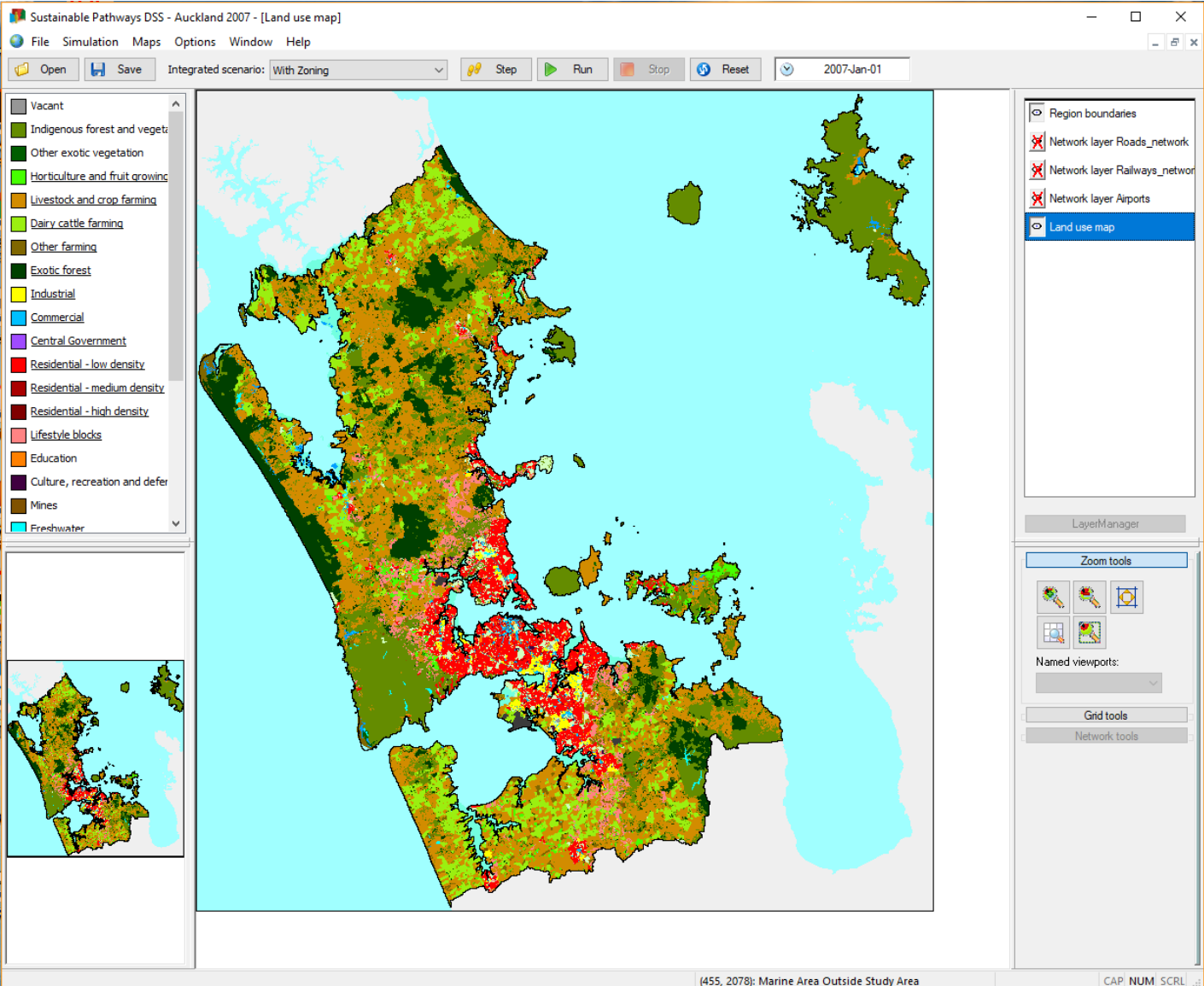
Led by Garry McDonald and Suzanne Wilkinson
(UoA)

Robert Cardwell (PhD student, UoA, Market
Economics)

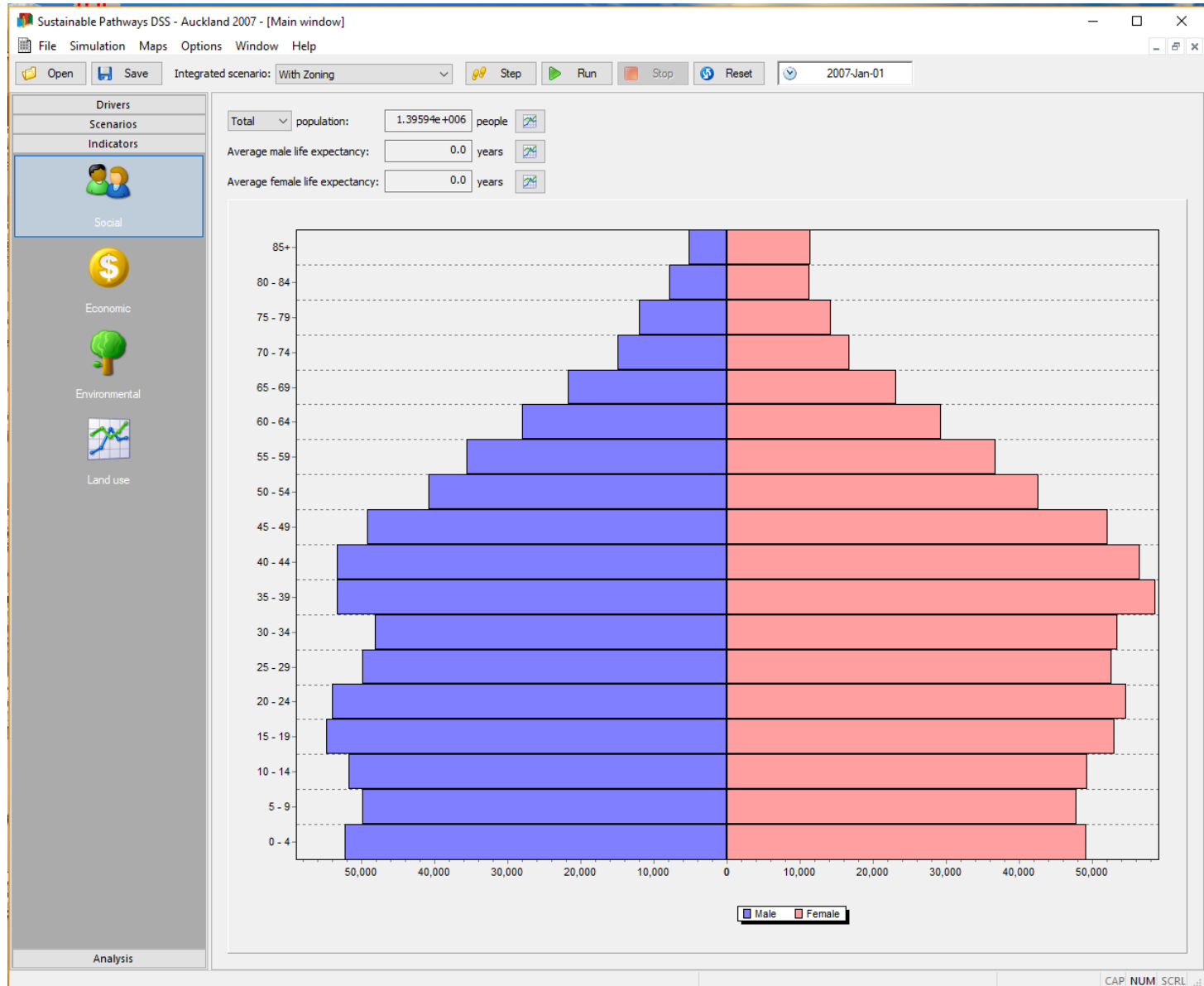
Key Output: Application of ISE, MERIT and
Spatial MERIT to hazard scenarios



Integrated Scenarios Explorer (ISE)



Population



Economic Demand

Sustainable Pathways DSS - Auckland 2007

File Simulation Maps Options Window Help

Open Save Integrated scenario: With Zoning Step Run Stop Reset 2007-Jan-01

Sector names Sector filter Sector - land use correspondence Consumption Demand Land use constraint Supply Indicators

Input

Time: 2007-Jan-01 Add time... Remove time

Sector	International exports [mln \$(2007)]	Interregional exports [mln \$(2007)]	Gross fixed capital formation [mln \$(2007)]	Changes in inventories [mln \$(2007)]
Horticulture and fruit growing	65.4444	32.8982	1.1812	1.51334
Livestock and cropping farming	1.0937	49.2854	0.15372	1.59863
Dairy cattle farming	0.4244	12.1031	0.0842621	0.457456
Other farming	8.99626	48.6974	0.644486	0.898839
Services to agriculture, hunting and trapping	2.43356	4.12364	9.04911	2.79502
Forestry and logging	19.798	4.29285	0.0878975	31.8762
Fishing	6.74202	42.1014	0	0.264191
Mining and quarrying	86.0522	35.5075	26.9624	10.0998

Parameters

Inverse Leontief matrix:

Sector / Sector	Horticulture a...	Livestock and ...	Dairy cattle far...	Other farming	Services to agr...	Forestry and l...	Fishing	Mining and q...	Oil and gas ex...	Meat and mea...	Dairy product ...	Other food m...
Horticulture a...	1.0234	0.00607817	0.00482218	0.00293803	0.00517115	0.00112527	0.000203151	7.74063e-005	0.00017707	0.00350412	0.00315984	0.01245
Livestock and ...	0.0033469	1.00709	0.00225018	0.00165324	0.00135526	0.000200352	6.77806e-005	2.93795e-005	4.80999e-005	0.0218958	0.00223618	0.001187
Dairy cattle far...	0.000362662	0.000662934	1.00038	0.000235286	0.000268379	4.27979e-005	1.90201e-005	8.15214e-005	2.68096e-005	0.00131299	0.0412408	0.0006077
Other farming	0.0057712	0.00489948	0.00253799	1.00706	0.00326119	0.000395765	7.16645e-005	2.98894e-005	7.01329e-005	0.00824078	0.00287761	0.001343
Services to agr...	0.0396241	0.0333149	0.0223169	0.0174506	1.04848	0.0719479	0.0131681	0.000180534	0.000533946	0.00693702	0.00252443	0.001190
Forestry and l...	0.00279975	0.00256447	0.00213759	0.00154135	0.0525494	1.24853	0.0018984	0.000424122	0.00101143	0.0007583	0.000445771	0.001358
Fishing	2.39077e-005	1.62246e-005	3.02205e-005	7.23575e-005	1.93831e-005	1.62788e-005	1.05042	0.000204007	0.000206806	2.07149e-005	4.04027e-005	0.003533
Mining and q...	0.00157884	0.00746036	0.00300091	0.00271964	0.00057462	0.00121548	0.00036195	1.0363	0.037882	0.00102222	0.00095134	0.001389

Output

Sector	Unconstrained final demand [mln \$(2007)]	Unconstrained output [mln \$(2007)]
Horticulture and fruit growing	147.291	230.895
Livestock and cropping farming	53.6274	85.4096
Dairy cattle farming	13.2091	57.6106
Other farming	65.0927	88.1697
Services to agriculture, hunting and trapping	20.904	106.117
Forestry and logging	65.6819	225.146
Fishing	53.7603	66.7986
Mining and quarrying	164.174	373.935
Oil and gas exploration and extraction	0	0

CAP_NUM SCRL

Land Use Neighbourhood Interaction

Sustainable Pathways DSS - Auckland 2007 - [Land use change model]

File Simulation Maps Options Window Help

Open Save Integrated scenario: With Zoning Step Run Stop Reset 2007-Jan-01

Land use: Vacant Land use type: Vacant

Land use Neighbourhood Accessibility Suitability Zoning

Parameters (for all land uses)
Inertia/conversion effect for vacant land uses:

From \ To	Vacant	Indigenous fo...	Other exotic v...
Horticulture a...	1	1	1
Livestock and ...	1	1	1
Dairy cattle far...	1	1	1
Other farming	1	1	1
Exotic forest	1	1	1
Industrial	1	1	1
Commercial	1	1	1
Central Gover...	1	1	1
Residential - I...	1	1	1
Residential - ...	1	1	1
Residential - h...	1	1	1
Lifestyle blocks	1	1	1

Neighbourhood effect for function land uses:

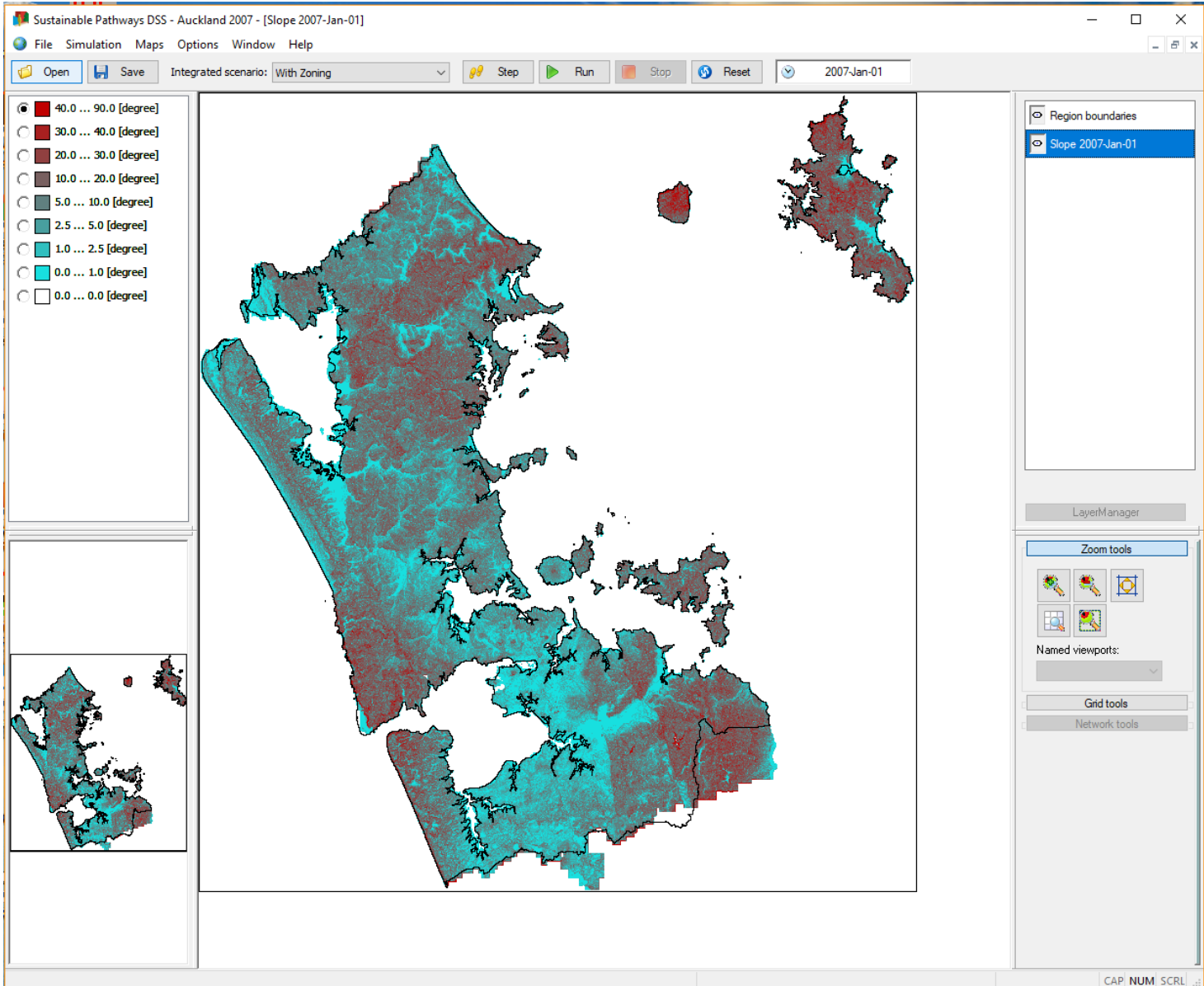
From \ To	Hort... Live... Dair... Oth... Exoti... Indu... Co... Cent... Resi... Resi... Resi... Lifes...											
Other farming												
Exotic forest												
Industrial												
Commercial												
Central Gover...												
Residential - I...												
Residential - ...												
Residential - h...												
Lifestyle blocks												
Education												
Culture, recre...												
Mines												

Maximum distance in neighbourhood [cells]: 8

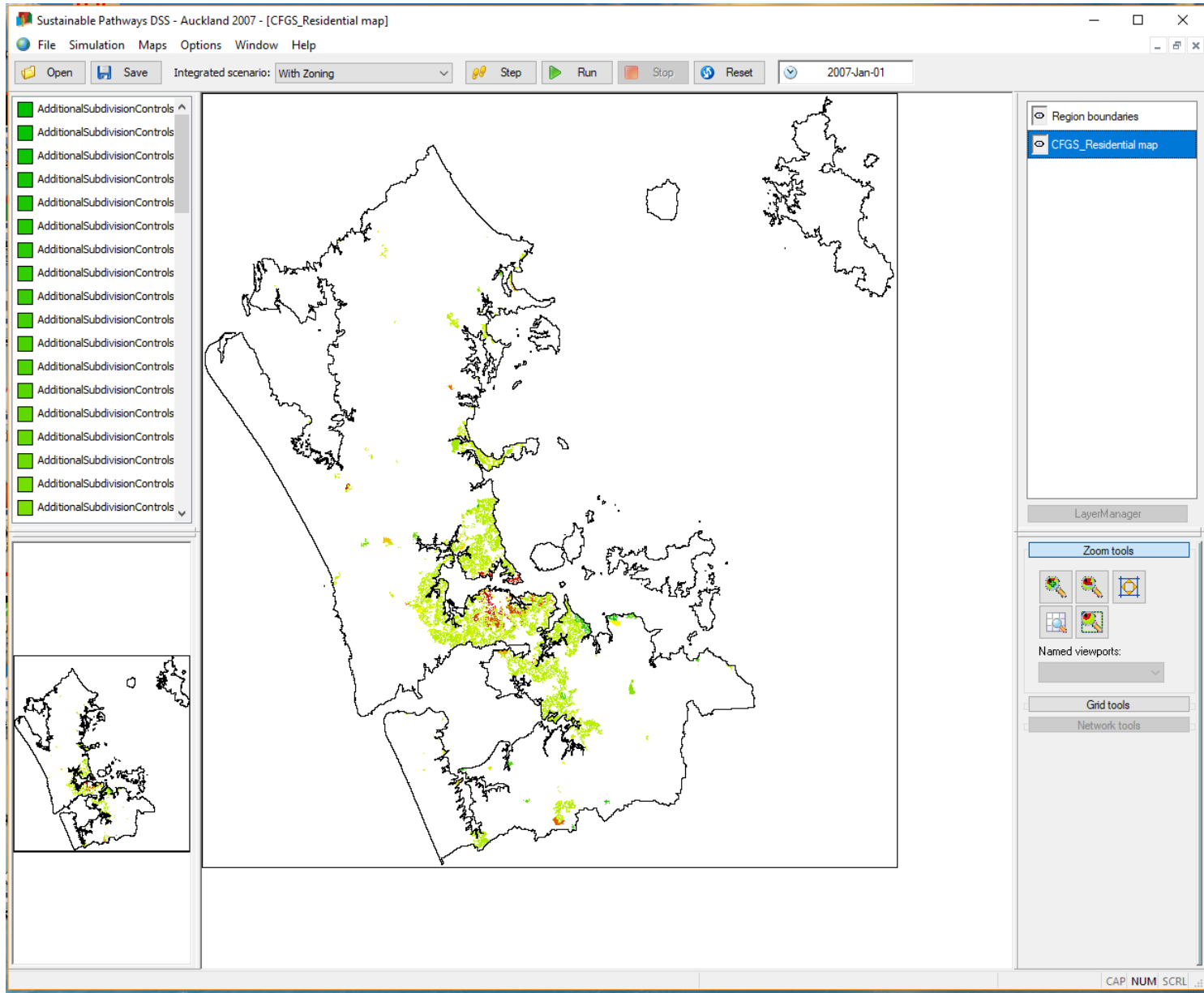
Output

Show neighbourhood potential map

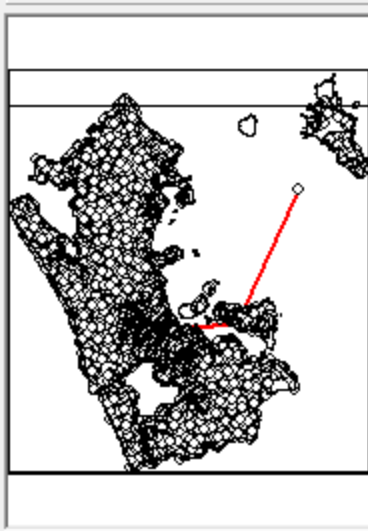
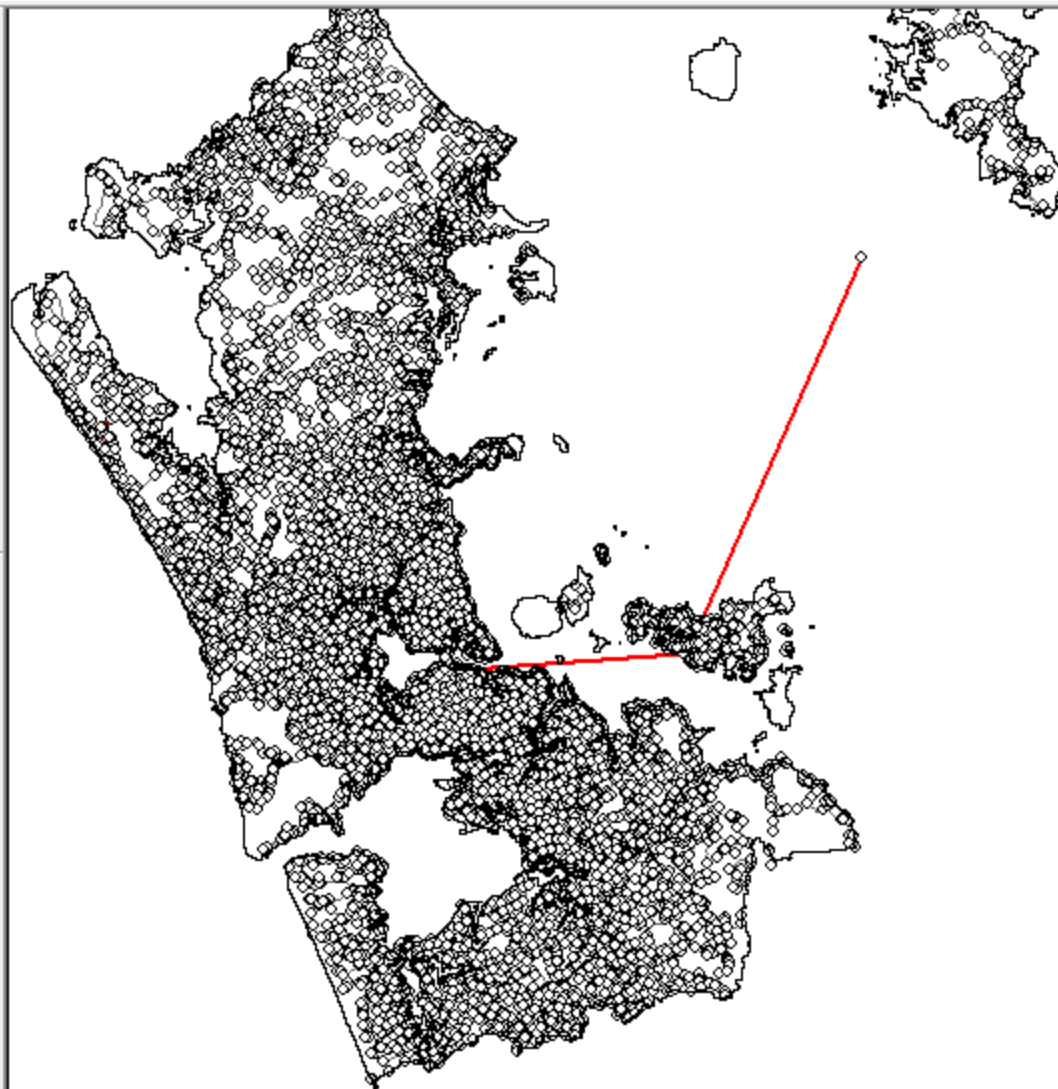
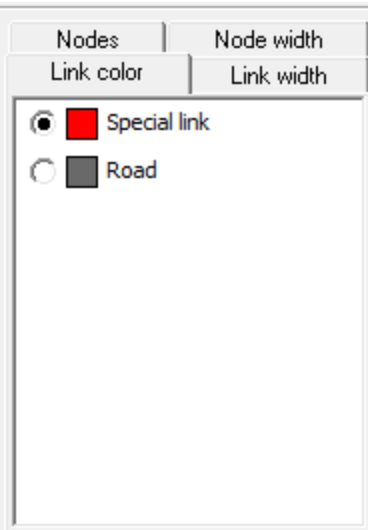
Suitability



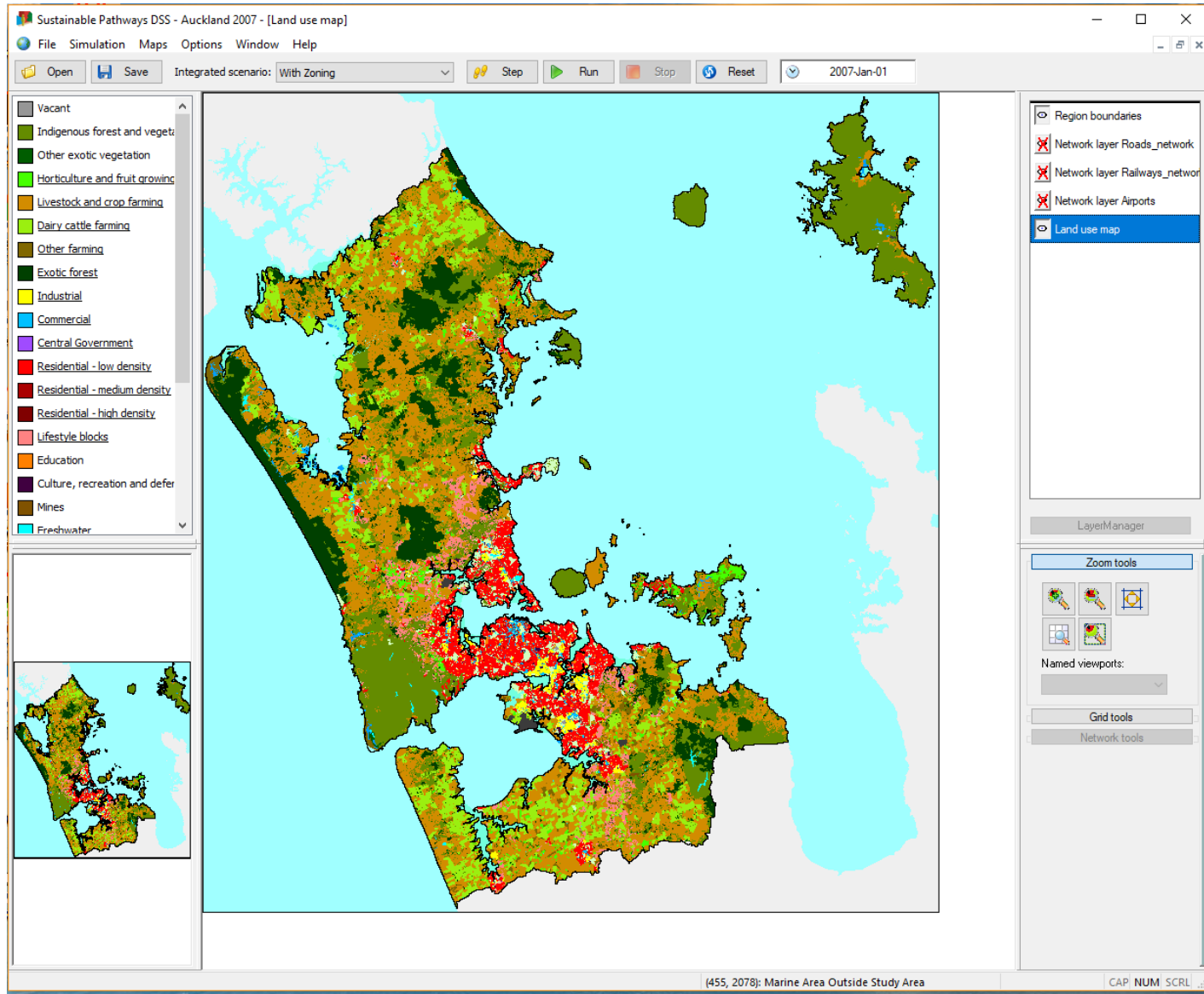
Zoning



Transport Network



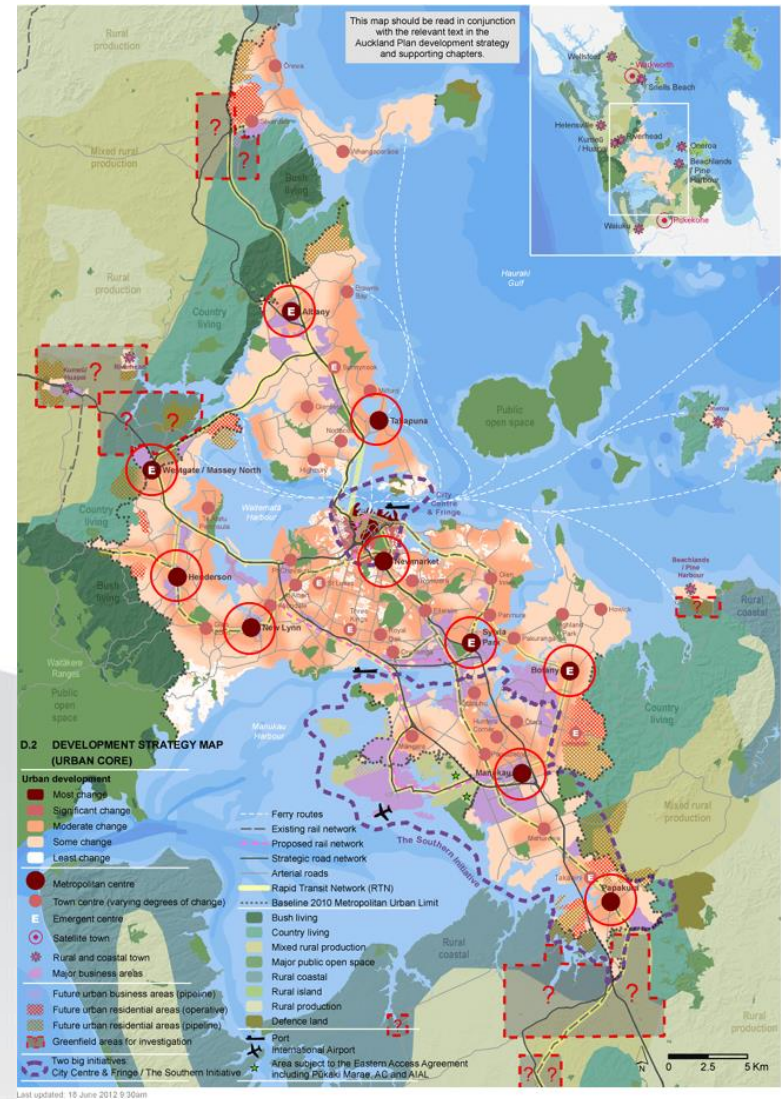
Bringing it all Together



Scenarios

Auckland Plan

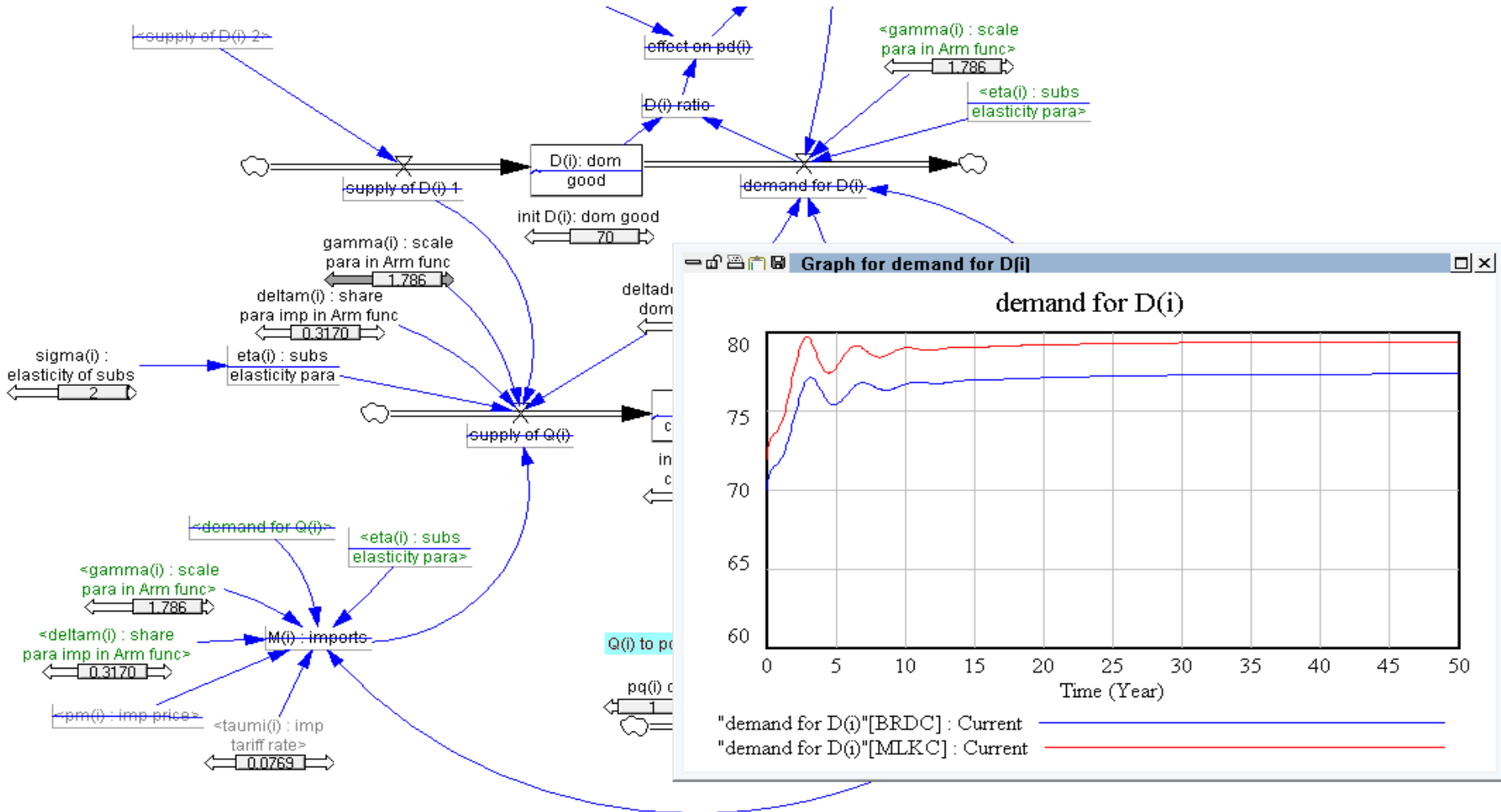
CRL



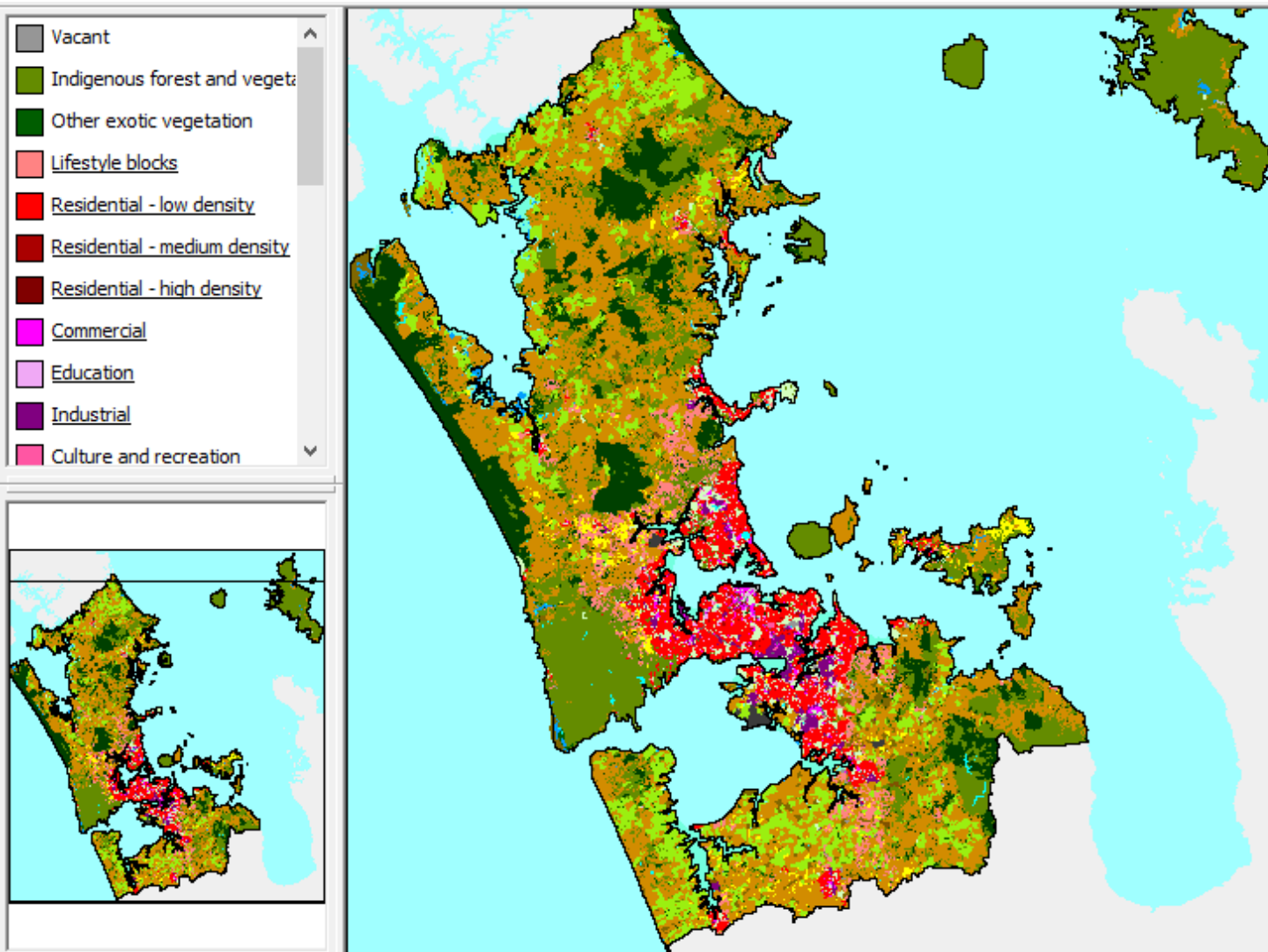
Hazard Scenarios



MERIT



Spatial MERIT



Summary

