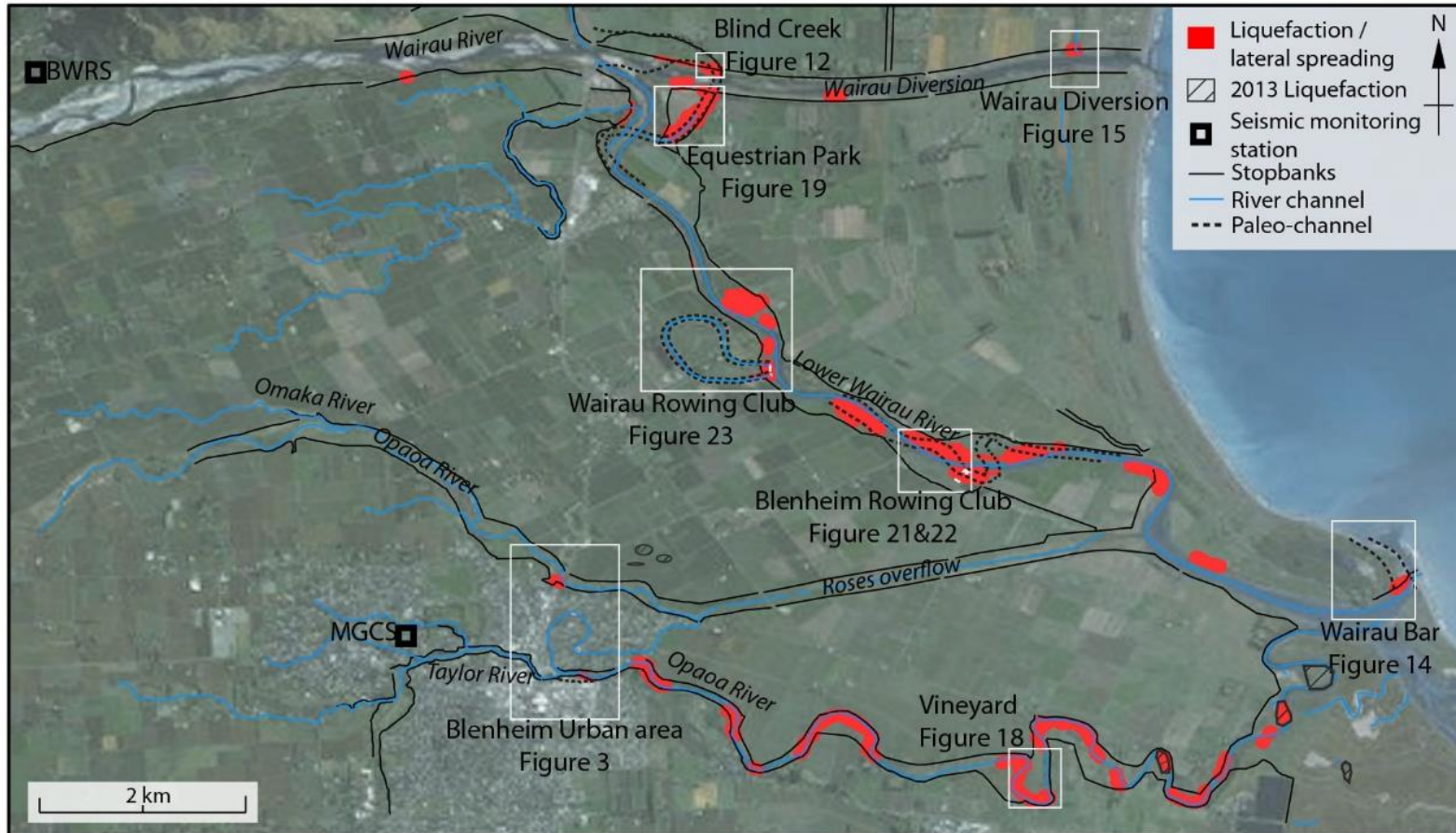


Blenheim liquefaction reconnaissance



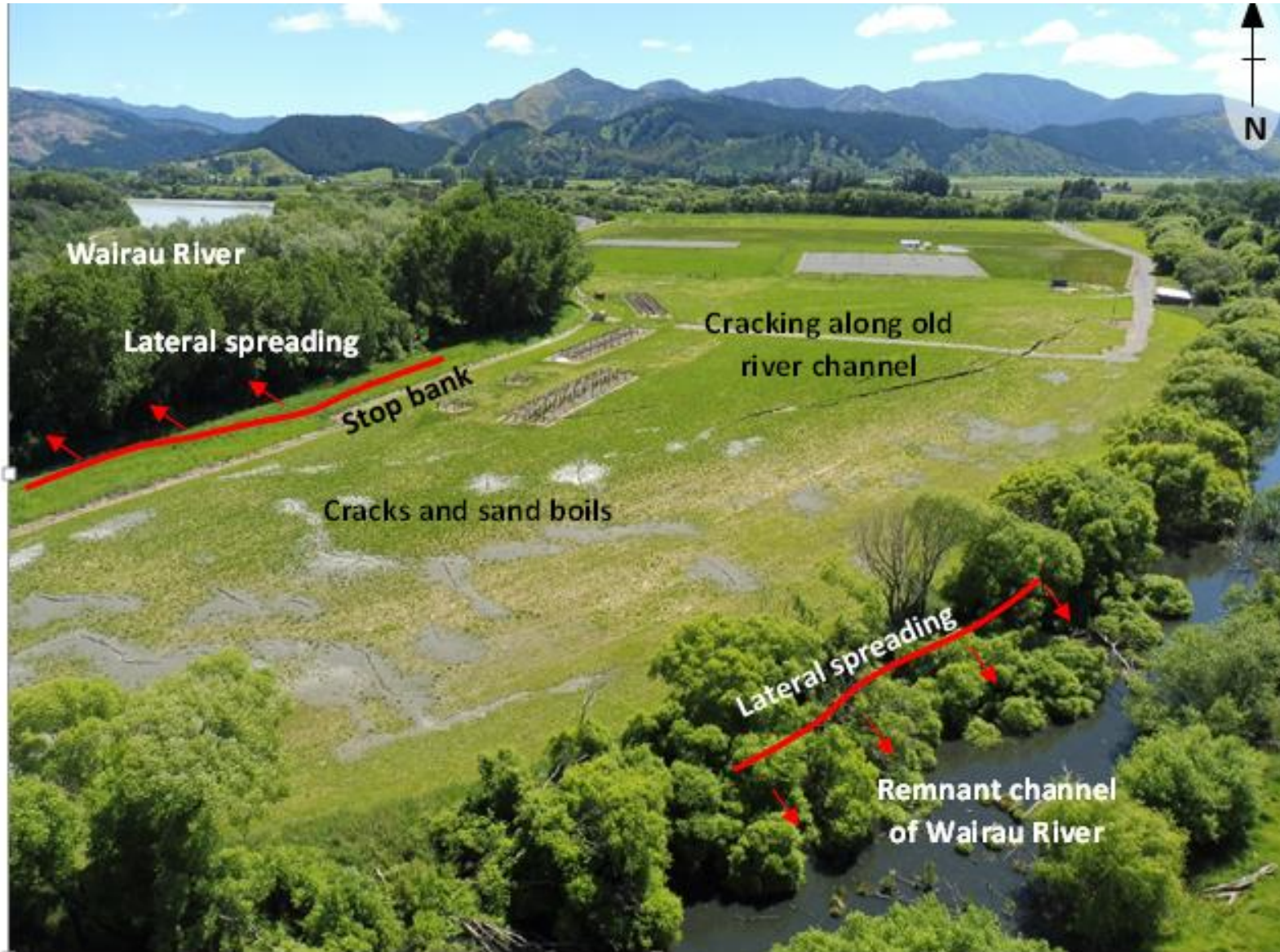
Overview of liquefaction damage in Blenheim



Liquefaction and lateral spreading observed adjacent to the Wairau, Taylor, and Opaoa Rivers to the east of Blenheim

Distribution closely linked to the current and paleo- river morphology i.e. inner meander bends and paleo-channels

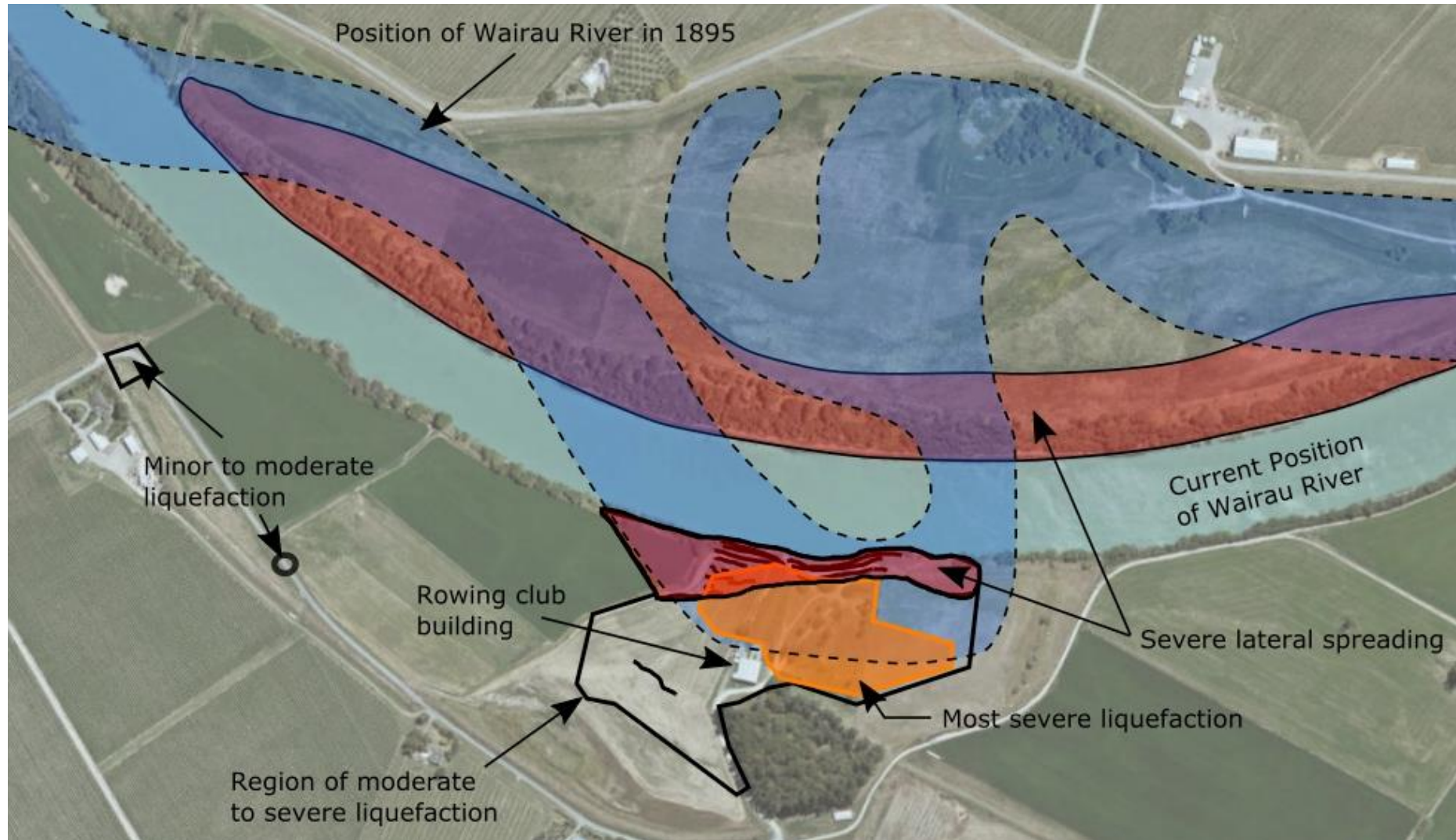
Equestrian Centre



Area encompassed by the Wairau River, Wairau Diversion, and a small channel associated with the Wairau River prior to diversion

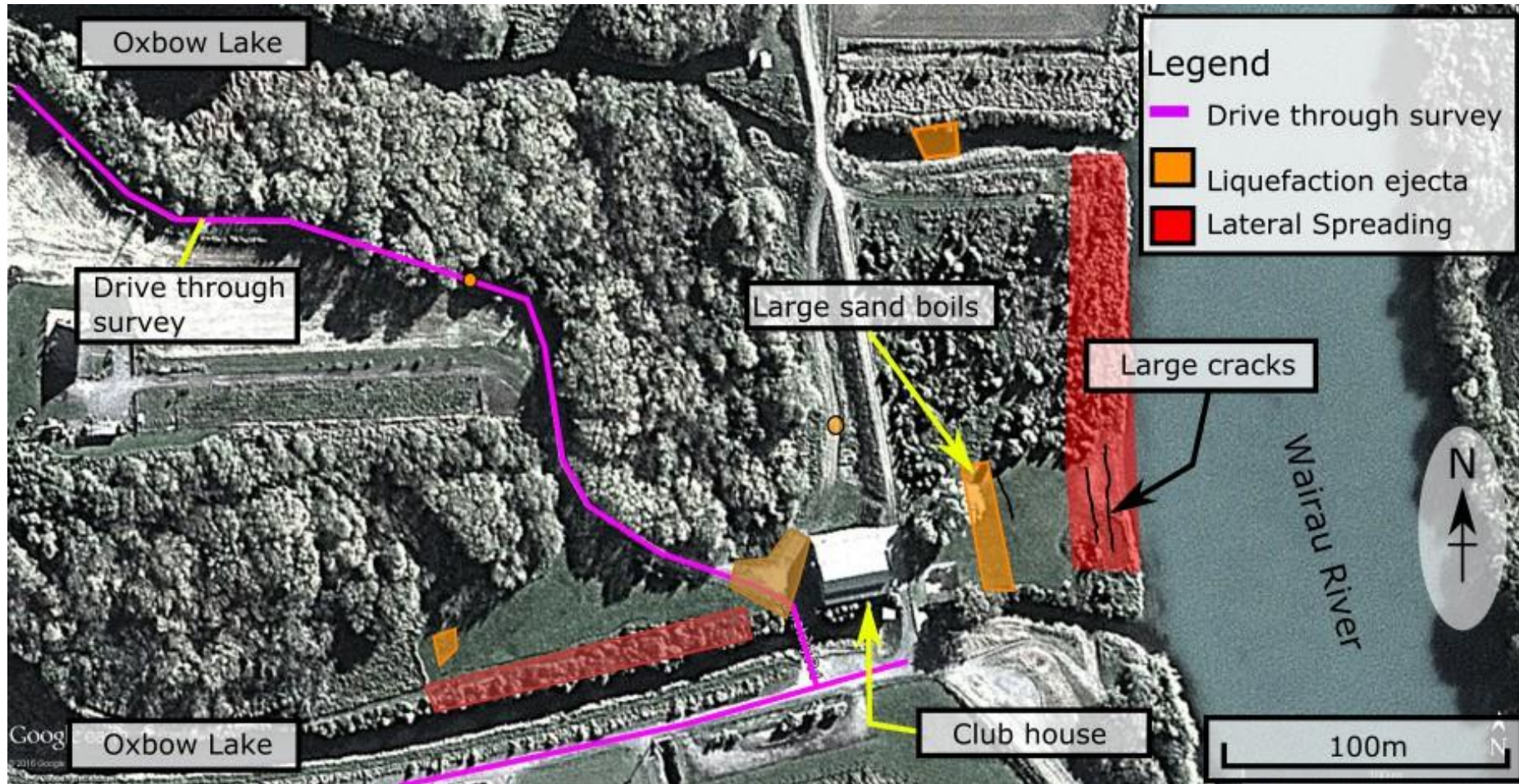
Liquefaction observed within the paleo-channel associated with the former position of the Wairau River prior to diversion

Blenheim Rowing Club



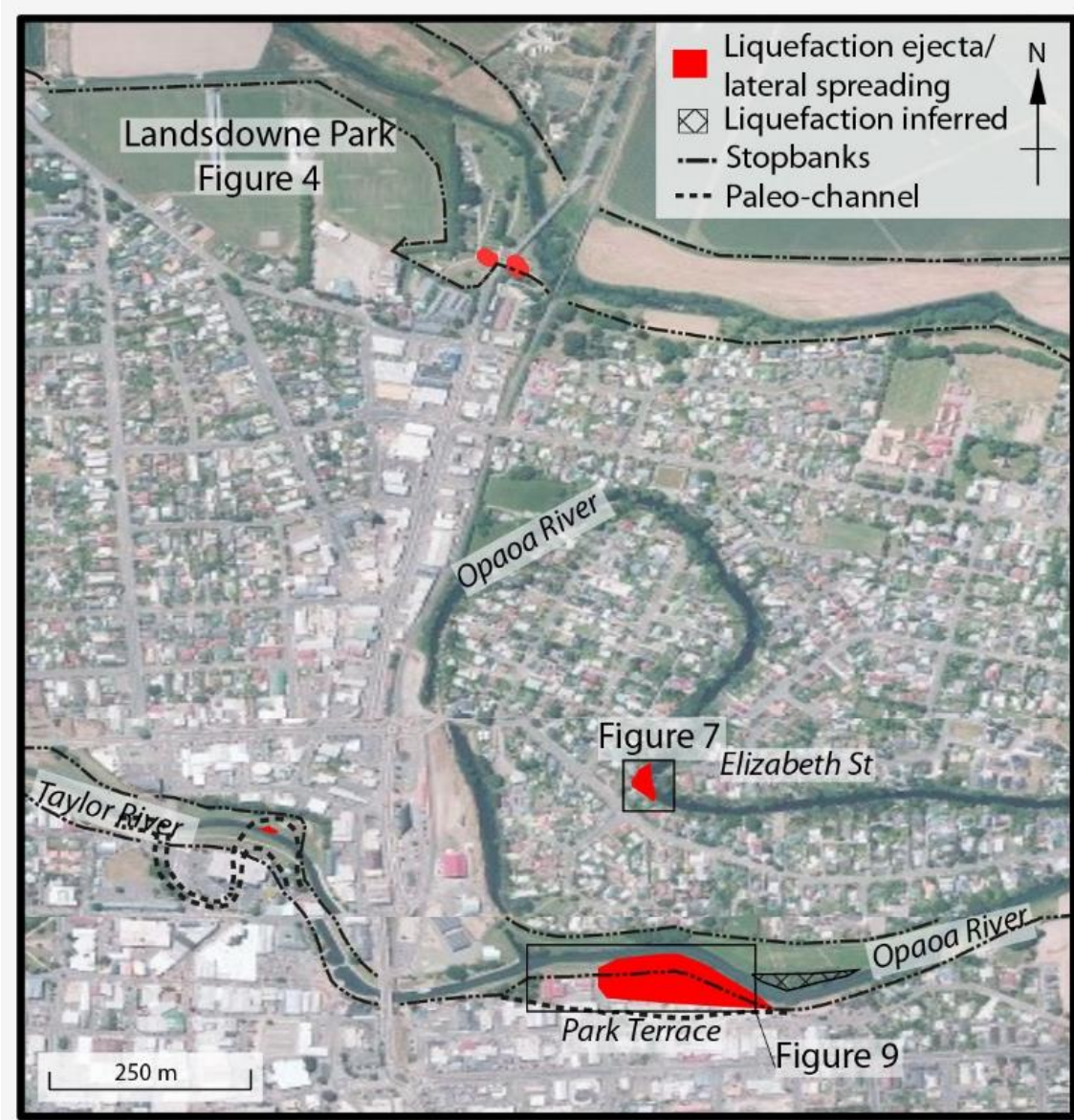
- Liquefaction occurred within the paleo-river channel from 1895

Wairau Rowing Club



- Encompassed by a meander-bend cut-off from the main channel – formed an ox-bow lake
- Liquefaction and lateral spreading occurred adjacent to the banks of the former and current river channel

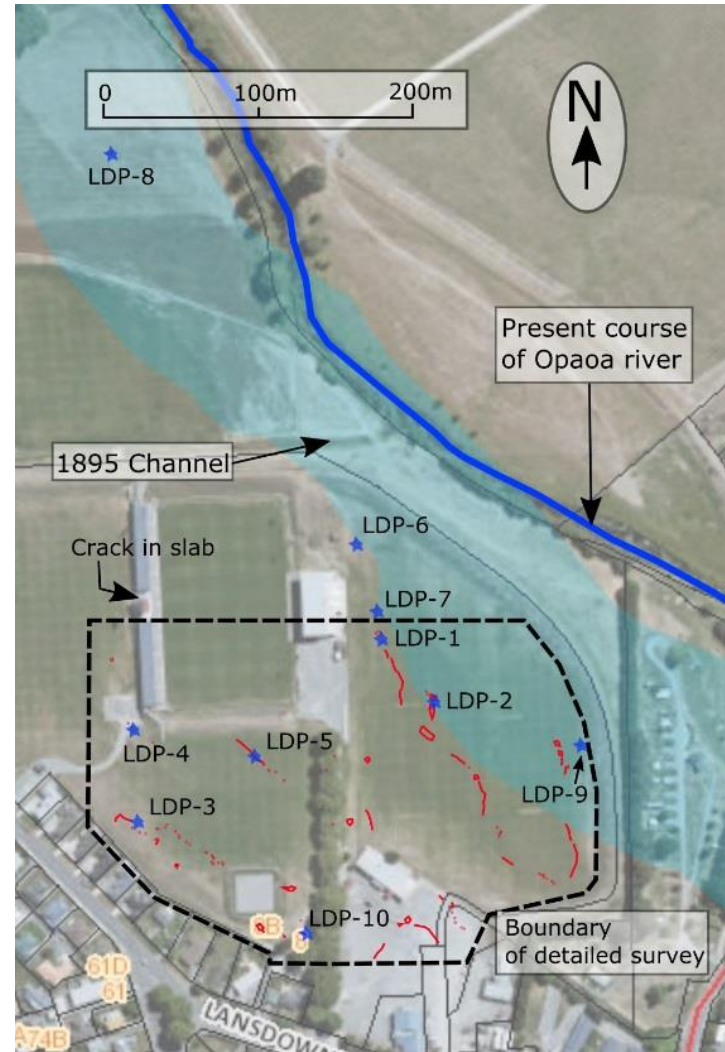
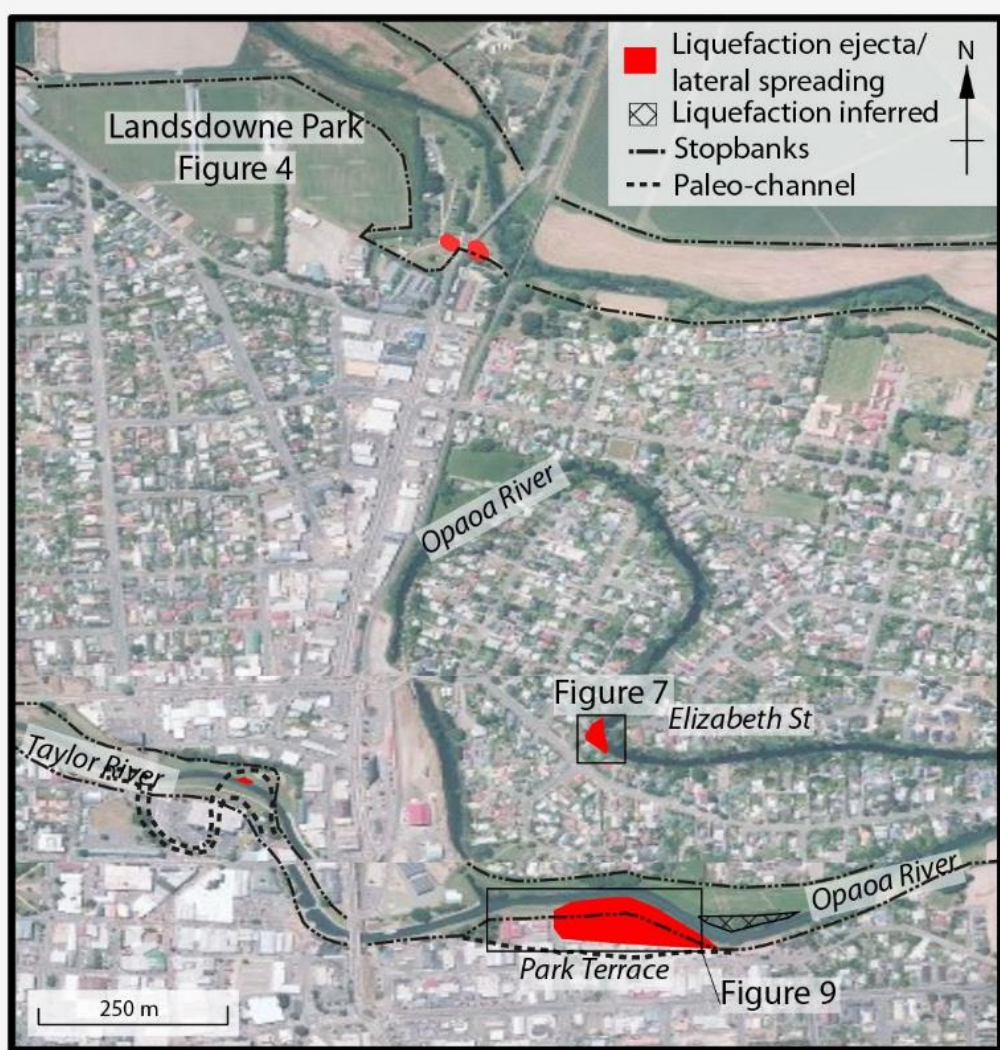
Overview of liquefaction damage in Central Blenheim



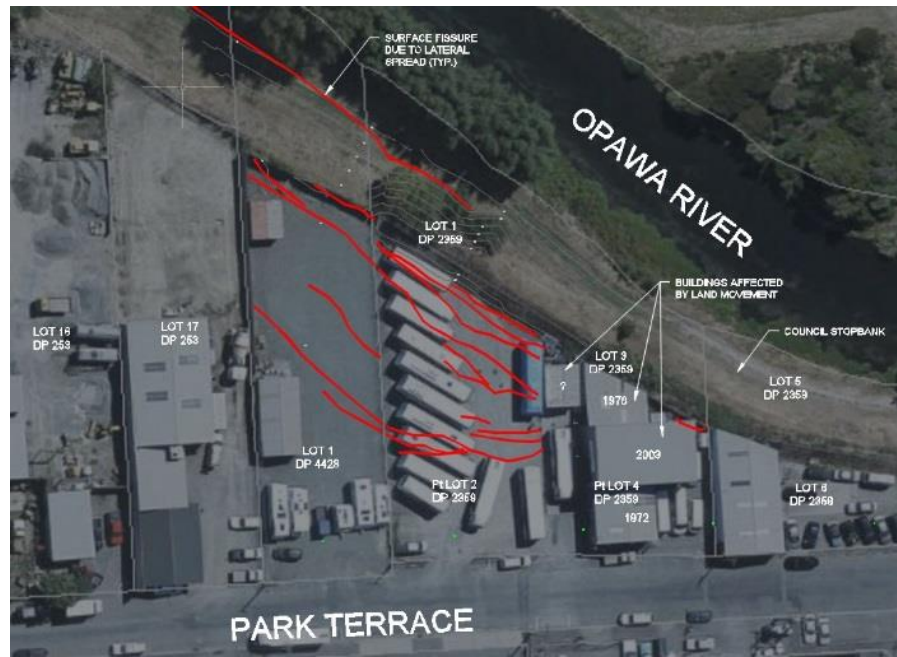
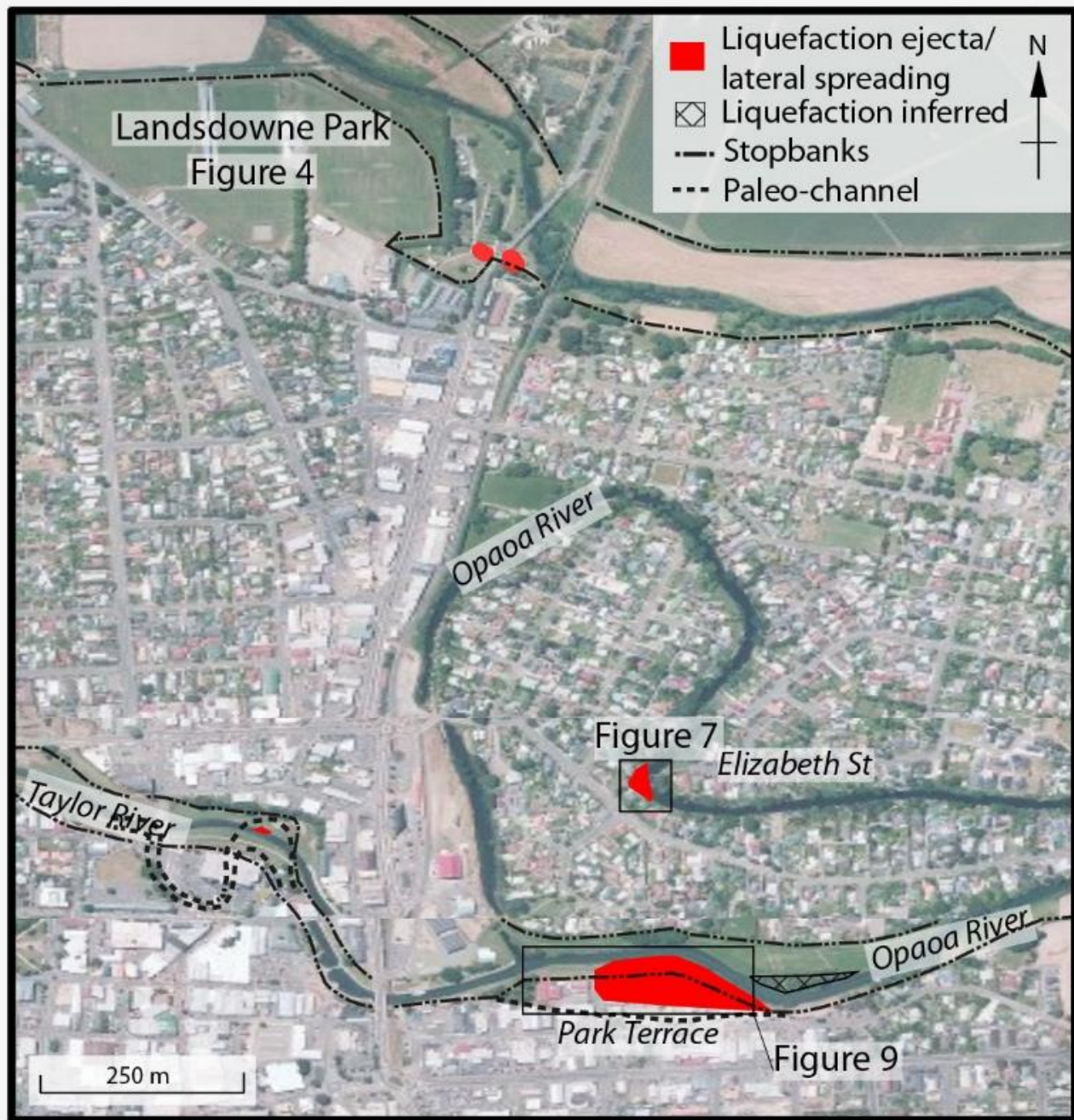
Localized liquefaction observed along the Opaoa and Taylor Rivers in Blenheim

Distributions observed within the inside banks of meander bends and within paleo-channels of the river

Landsdowne Park



Liquefaction and lateral spreading observed inside the 1895 paleo-channel of the Opaoa River, along with the surrounding over-bank flood plain deposits



Elizabeth Street

Stopbank damage around Blenheim



Liquefaction and lateral spreading induced damage to stopbanks corresponds with the location of paleo-channels and swamps along the Wairau River and Diversion, and with the inner banks of meander bends along the Opaoa River

