

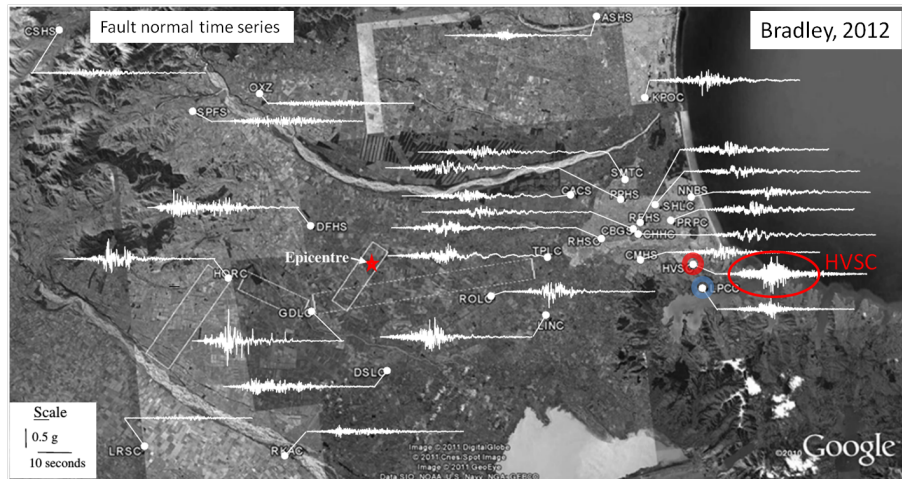
Use of site-specific response analysis at Heathcote Valley to examine extreme ground motion amplitudes

Seokho Jeong Brendon A. Bradley

Department of Civil and Natural Resources Engineering
University of Canterbury

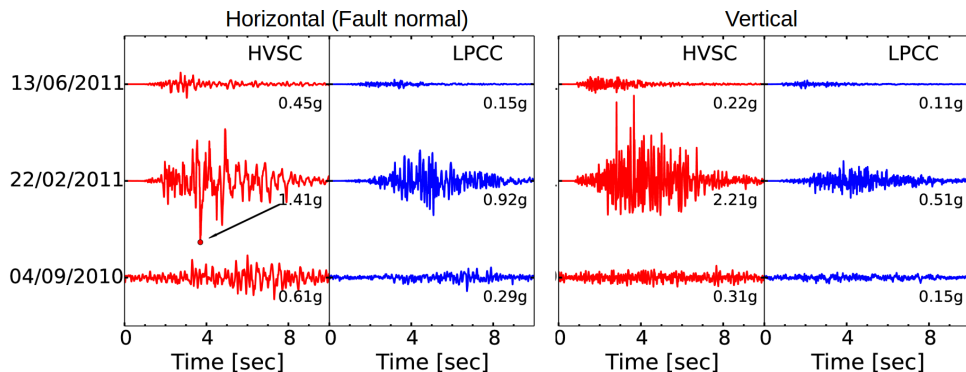
April 28, 2016

Observed site amplification: 4 Sept 2010



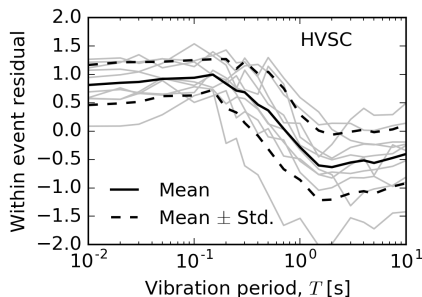
- Acceleration amplitude at HVSC significantly higher than nearby stations (similar source-site distances and azimuths)

Observed site amplification: HVSC VS. LPCC

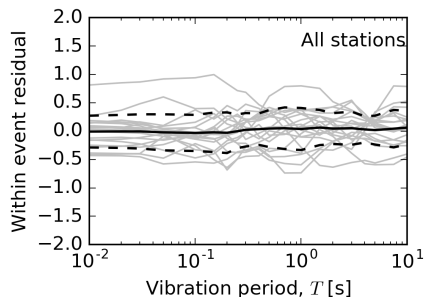


- Consistently higher amplitude at HVSC throughout the sequence of events
- Intense vertical acceleration

Empirical predictions [Bradley 2015]



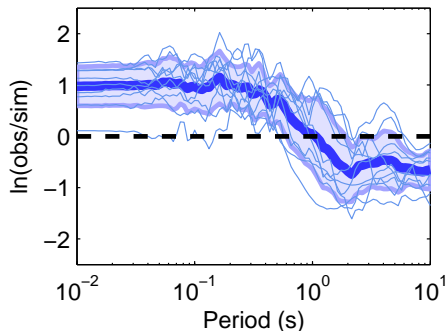
(a) HVSC



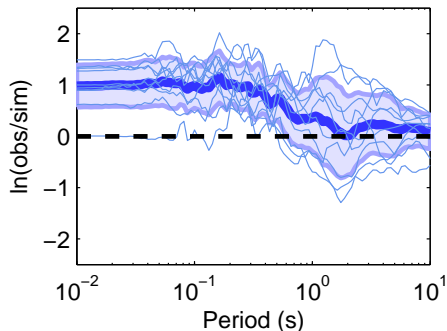
(b) All stations

- Non-ergodic empirical analysis of ground motions suggests strong systematic site amplification in periods $T < 0.5$ s

Broadband ground motions simulations



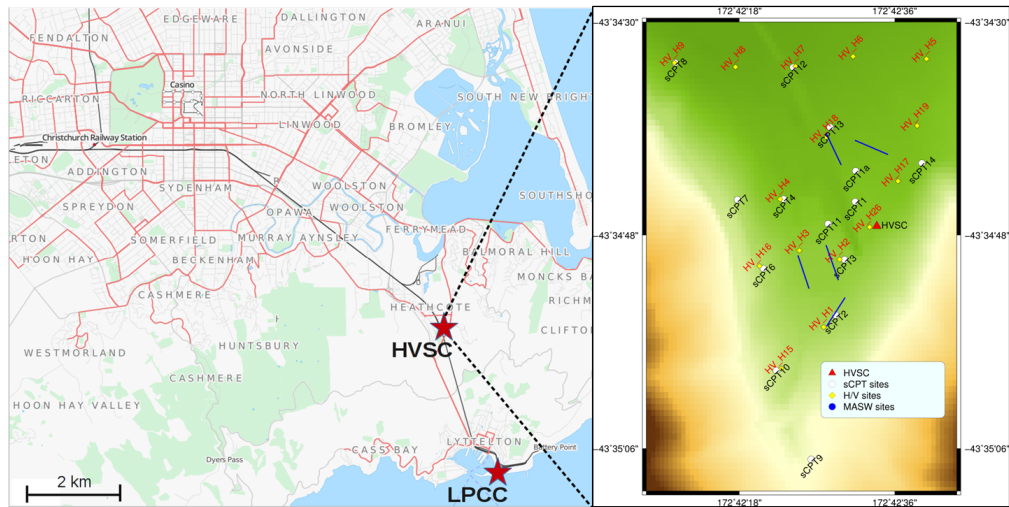
(a) 1D velocity model



(b) 3D velocity model

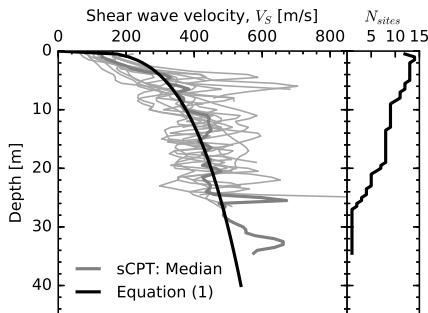
- Hybrid ground motion simulations using the Graves and Pitarka method, with a recently developed 1D and 3D velocity models of the Canterbury region
- V_{S30} based empirical correction factor to account for the site amplification
- 3D velocity model significantly improves prediction of long period ($T > 2s$) ground motions, but the prediction is still poor in short periods

Site investigation

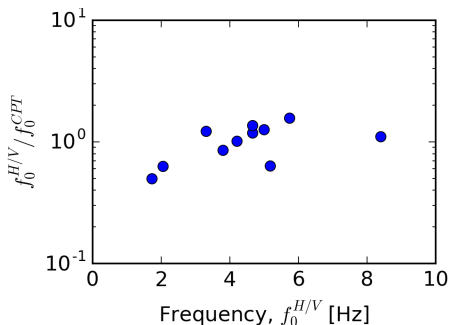


- 15 seismic CPT, 15 ambient noise H/V, 5 surface wave tests
- Lidar-based DEM to account for topography

Site investigation



(a) V_S from sCPT

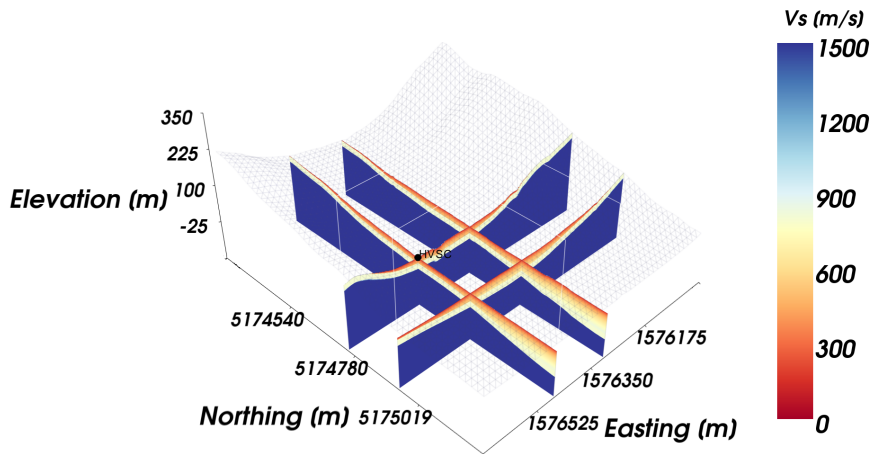


(b) Comparison of f_0 from H/V and sCPT

- Measured soil velocities are modelled with a power law equation:

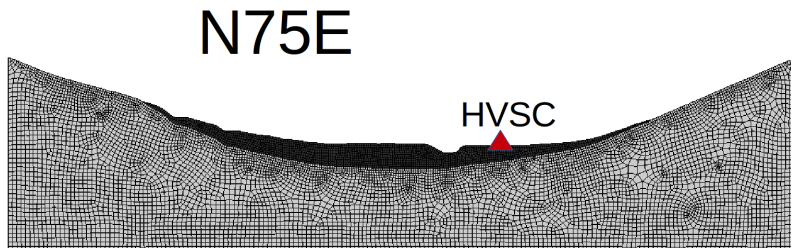
$$V_S = 207z^{0.25} \text{ m/s}$$
- Site periods measured by H/V and sCPT are broadly consistent

3D geological model of Heathcote Valley



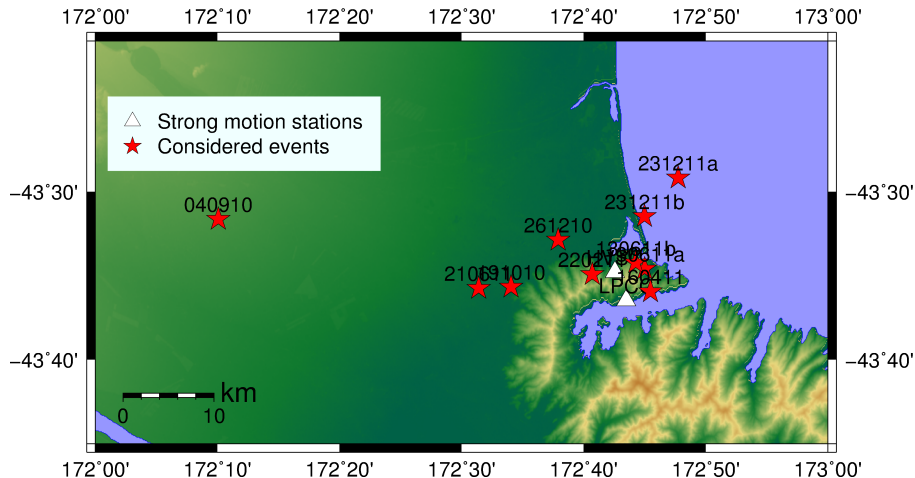
- $V_s = 207z^{0.25}$ m/s for soils; $V_s = 1500$ m/s for the volcanic bedrock
- Soil thickness profile from CPT refusal depths and the estimated depths from H/V spectral ratios

2D finite element model



- 2D finite element simulations using OpenSees
- Non-reflective boundaries; equivalent force input at the base of the model
- PDMY model (UCSD) for soils and the linear elastic model for rocks:
 - Soil: $\rho = 1.8 \text{ Mg/m}^3$, $V_S = 207z^{0.25} \text{ m/s}$, $\phi = 36^\circ$, $\nu = 0.25$
 - Weathered rock: $\rho = 2.4 \text{ Mg/m}^3$, $V_S = 800 \text{ m/s}$, $\nu = 0.25$
 - Basement rock: $\rho = 2.4 \text{ Mg/m}^3$, $V_S = 1500 \text{ m/s}$, $\nu = 0.25$

Earthquake events for simulations



- Deconvolved and amplitude-corrected (based on the empirical model by Bradley 2010) LPCC rock motions as input motions

Earthquake events for simulations

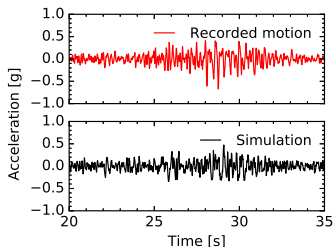
Table: Earthquake events used in the analyses, in chronological order.

Event date	M_W	HVSC			LPCC		
		R_{rup}^1 (km)	PGA^2 (g)	PGV (cm/s)	R_{rup} (km)	PGA (g)	PGV (cm/s)
04/09/2010	7.1	20.8	0.61	29	22.4	0.29	19
19/10/2010	4.8	12.8	0.09	3.2	13.1	0.02	0.71
26/12/2010	4.7	4.7	0.11	2.9	7.7	0.02	0.65
22/02/2011	6.2	3.9	1.41	81	7.0	0.92	46
16/04/2011	5.0	7.3	0.68	32	5.2	0.29	8.5
13/06/2011(a)	5.3	4.7	0.45	14	5.3	0.15	5.4
13/06/2011(b)	6.0	3.6	0.91	55	5.8	0.64	33
21/06/2011	5.2	14.9	0.26	8.0	15.6	0.07	2.1
23/12/2011(a)	5.8	9.9	0.31	12.7	11.4	0.24	7.6
23/12/2011(b)	5.9	9.7	0.26	42	12.4	0.44	23

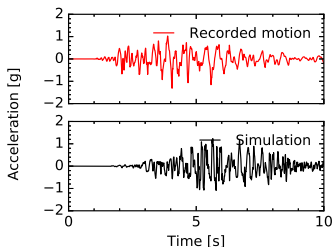
¹The shortest source-to-site distance based on the models by Beavan et al. (2012)

²Horizontal fault-normal component

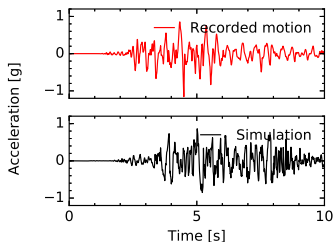
Simulations VS. Records: Time Series



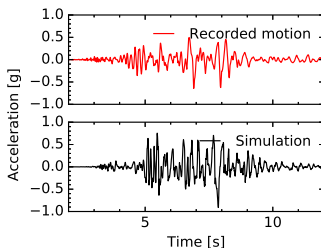
(a) 04/09/2010



(b) 22/02/2010

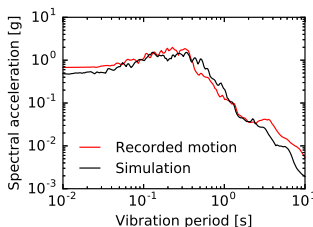


(c) 13/06/2011(b)

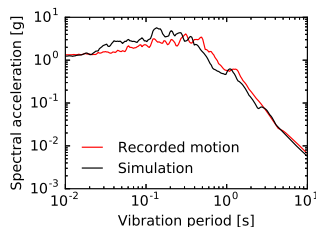


(d) 23/12/2011(b)

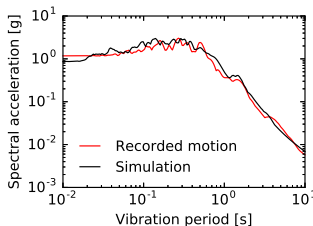
Simulation VS. Records: Response Spectra



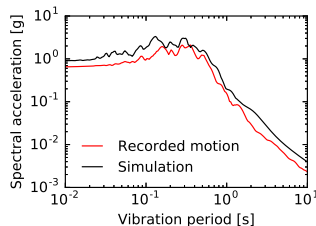
(a) 04/09/2010



(b) 22/02/2010

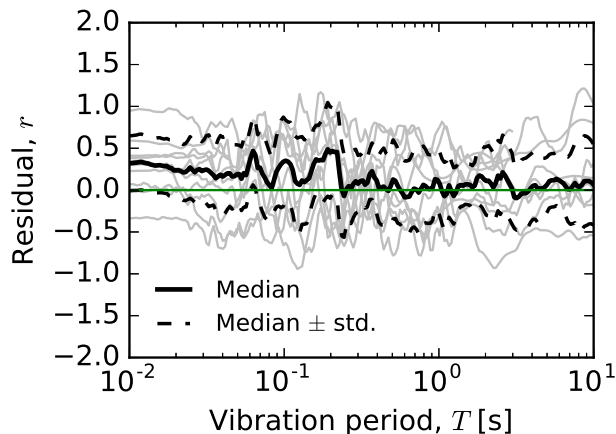


(c) 13/06/2011(b)

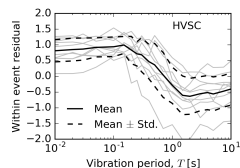


(d) 23/12/2011(b)

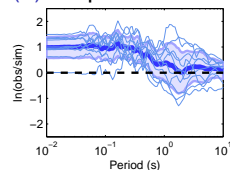
Spectral acceleration residuals



(a) 2D nonlinear site response analyses



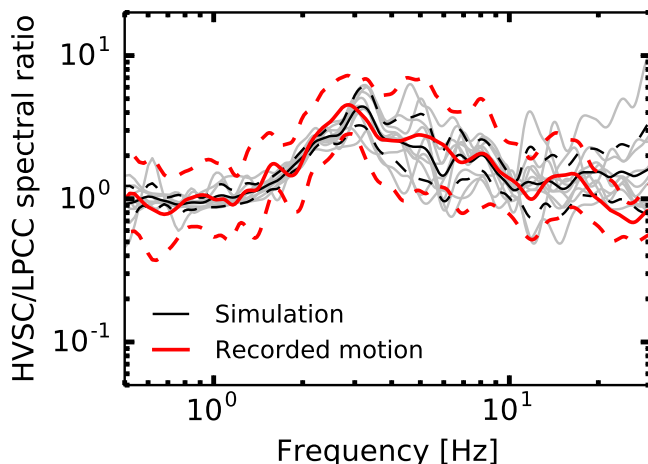
(b) Empirical model



(c) Ground motion simulation with 3D velocity model

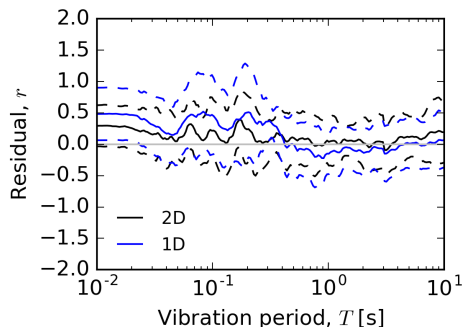
- The 2D Heathcote Valley site response model performs much better than the empirical model and the large-scale ground motion simulation

HVSC/LPCC spectral ratios

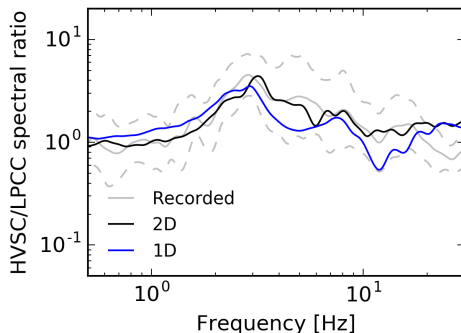


- Very good agreement between the observed and simulated spectral ratios
- Simulations show a large variability in the high frequencies ($f > 3\text{Hz}$), likely due to the event-dependent soil non-linear response

2D vs 1D simulations



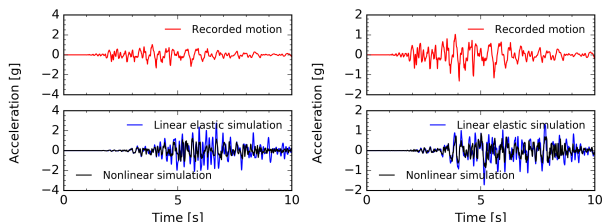
(a) Spectral acceleration residual



(b) HVSC/LPCC spectral ratio

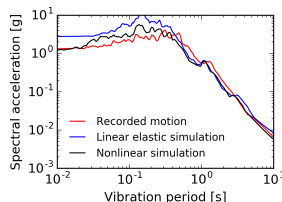
- 2D simulations outperform 1D simulations
- 1D simulations overestimate long period motions ($T > 0.5s$ or $f < 2Hz$): Topography effect?
- 2D simulations and the recorded motions are further amplified in short periods ($T < 0.5s$ or $f > 2Hz$), likely caused by the Rayleigh waves generated near the basin edge

Effects of non-linear soil response

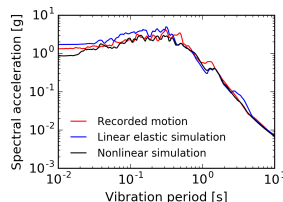


(a) 22/02/2011

(b) 13/06/2011(b)



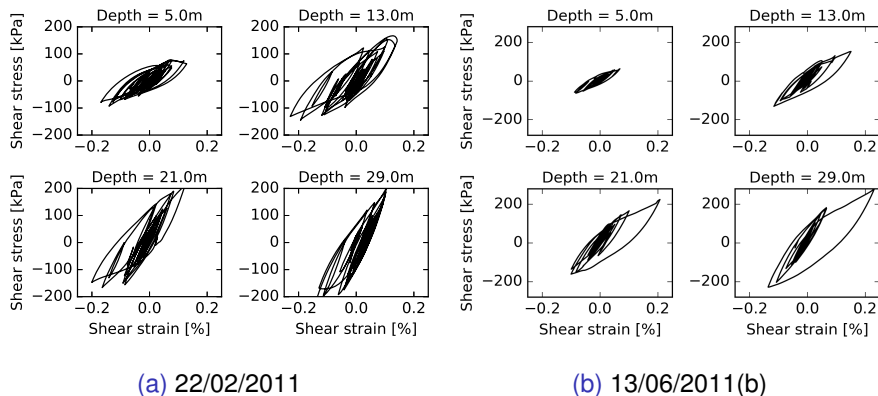
(a) 22/02/2011



(b) 13/06/2011(b)

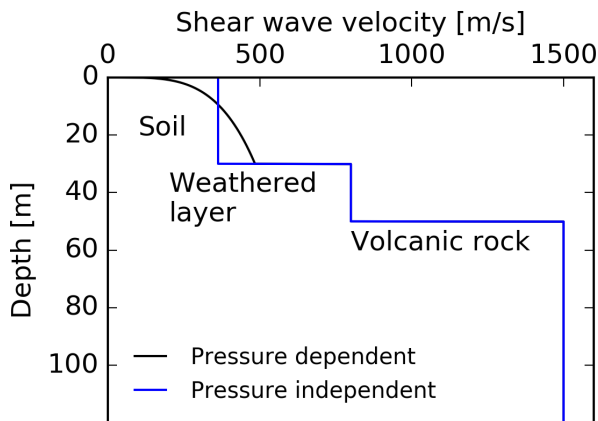
- Linear elastic simulations overestimate the ground motion amplitudes for strong events

Effects of non-linear soil response



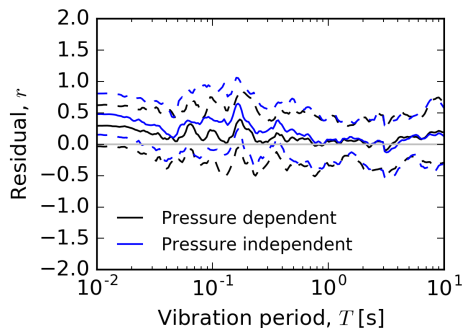
- Significant amount of energy is dissipated via the hysteretic response of soils during strong ground shaking events
- Improper modelling of such behaviour can lead to significant overestimation of ground motion amplification, caused by the waves trapped within the soil layer

Role of the depth dependent soil velocities

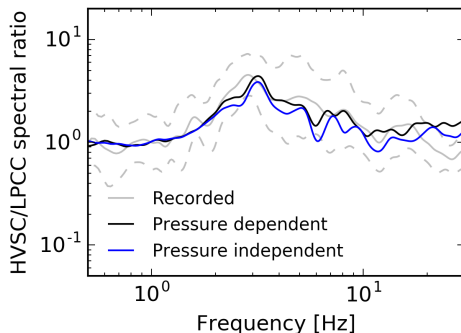


- Pressure dependent vs depth invariant soil moduli and strengths
- The two models have identical site periods and similar fundamental model amplification factors

Role of the depth dependent soil velocities



(a) Spectral acceleration residual



(b) HVSC/LPCC spectral ratio

- The equivalent homogeneous soil model underestimates the ground motion amplitude (at $T > 0.5s$ or $f < 2Hz$)
- The steep near surface velocity gradient of pressure dependent model results in much larger high frequency amplification; it may also affect how the surface waves propagates

Conclusion

- 2D non-linear site response simulation of Heathcote Valley shows a good agreement with observed ground motions and performs significantly better in high frequencies than the empirical model and the large scale ground motion simulation
- The strong impedance contrast at the soil-rock interface at Heathcote Valley significantly amplifies the ground motions near $f = 3\text{Hz}$
- Simulations suggest that the Rayleigh waves generated near the basin edge further amplify the ground motions at $f > 3\text{Hz}$
- Improper modelling of soil non-linear response may significantly overestimate the ground motion intensities for strong earthquake events
- Assumption of a depth-invariant soil velocity (and strength) may underestimate the amplification at frequencies higher than the site fundamental frequency