

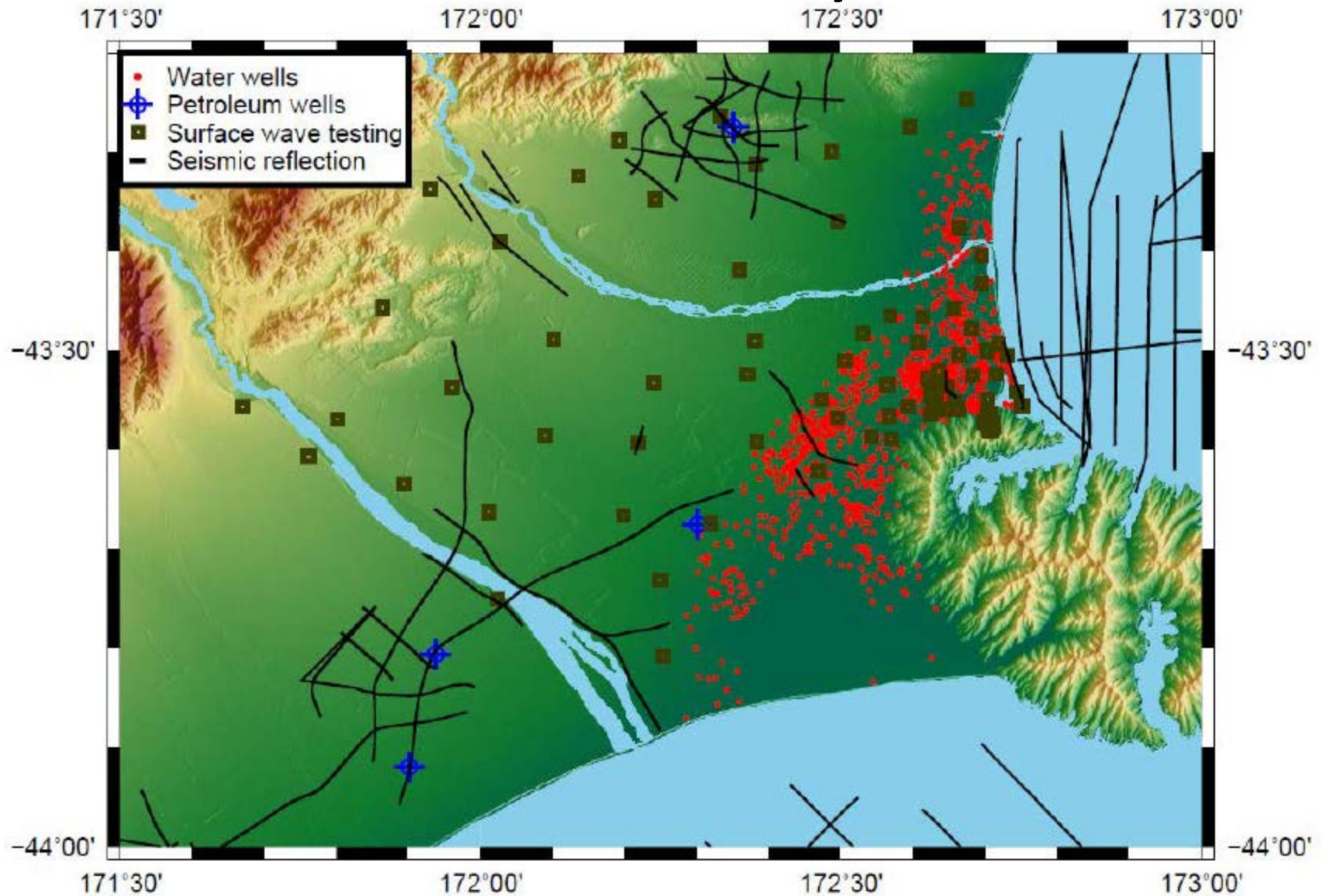
# Regional site characterisation studies to inform distributed infrastructure assessments

Liam Wotherspoon

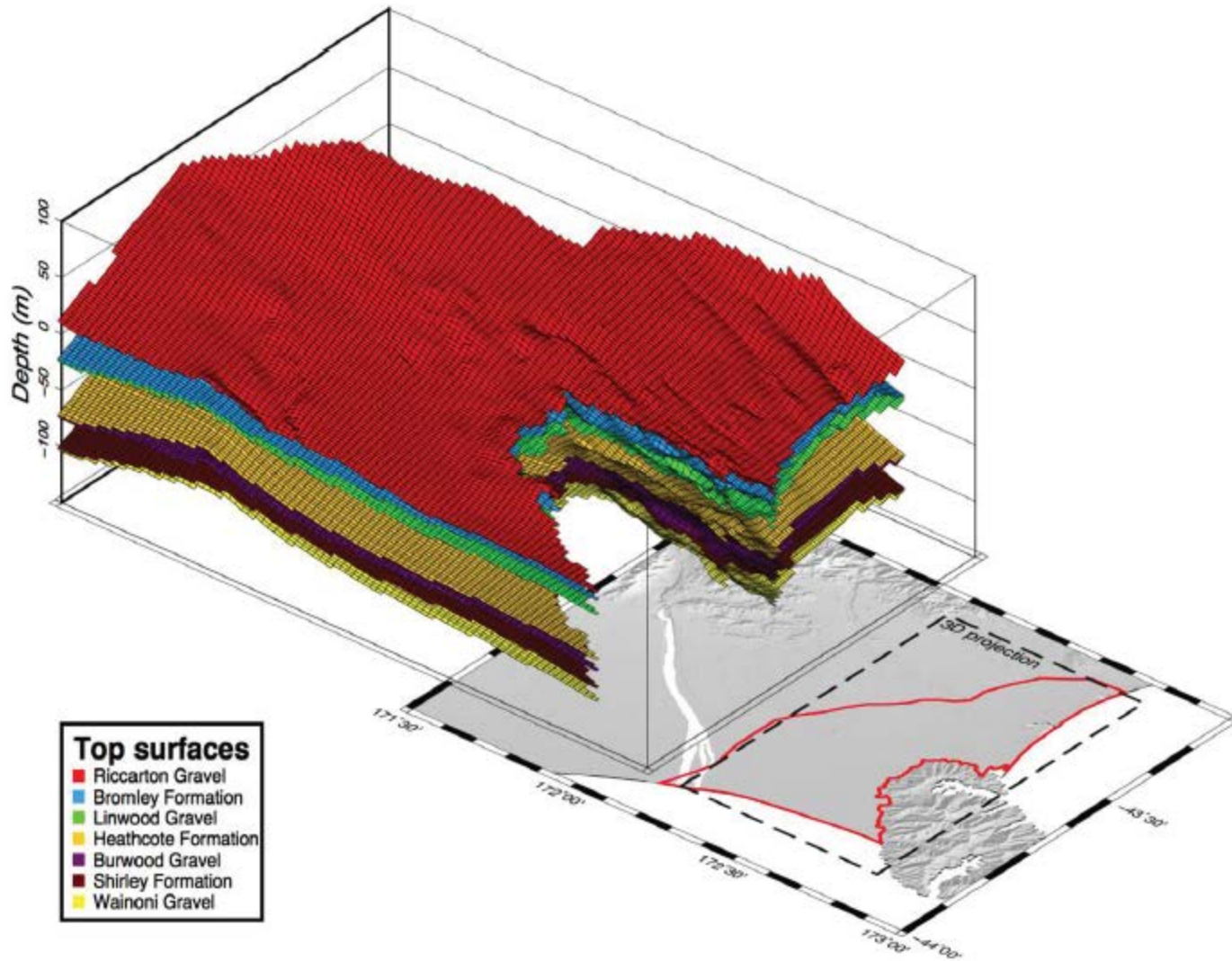
# Summary

- Regional
  - Canterbury & Christchurch
  - Auckland
  - Nelson/Tasman
  - Tauranga
  - Wellington
- National

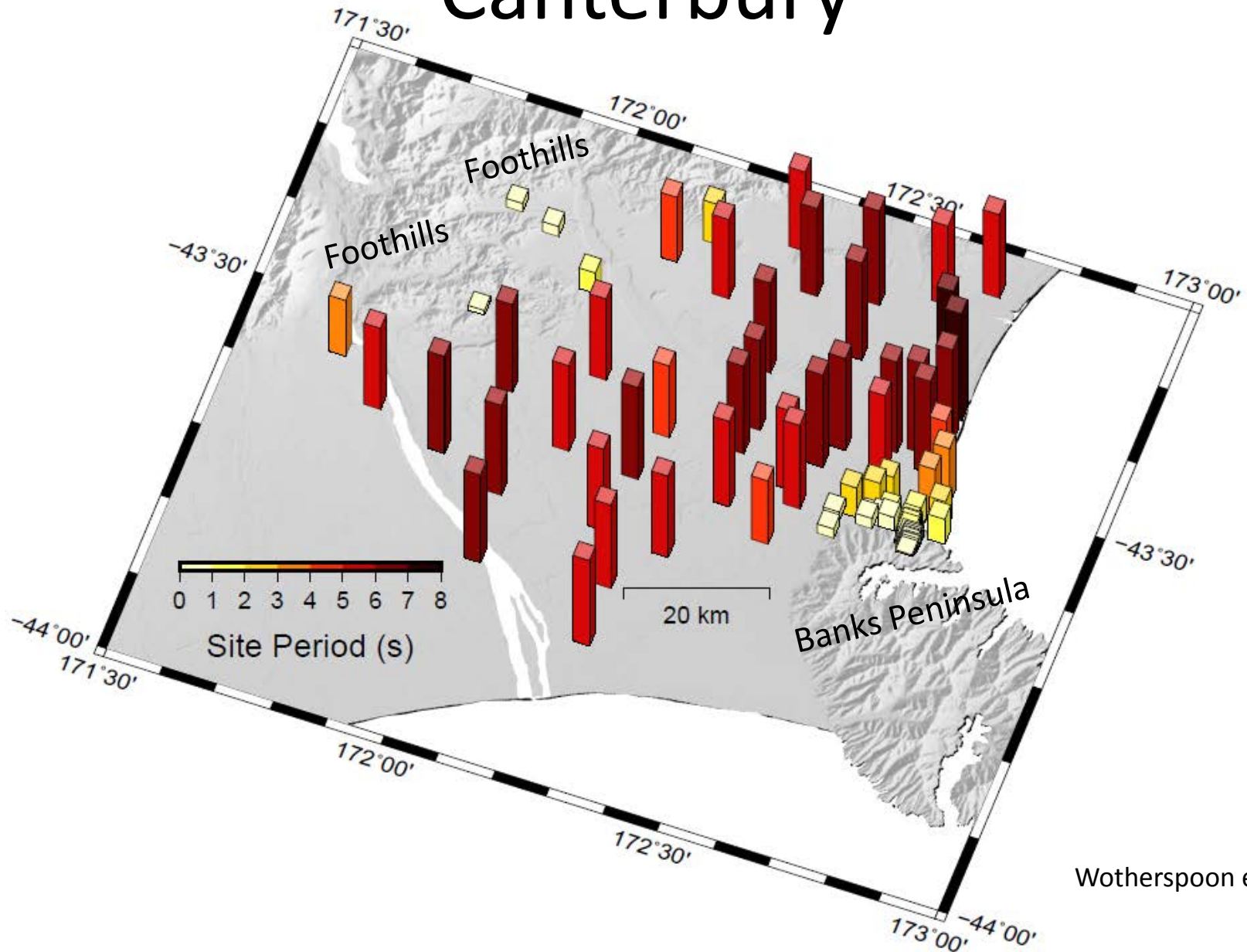
# Canterbury



# Canterbury



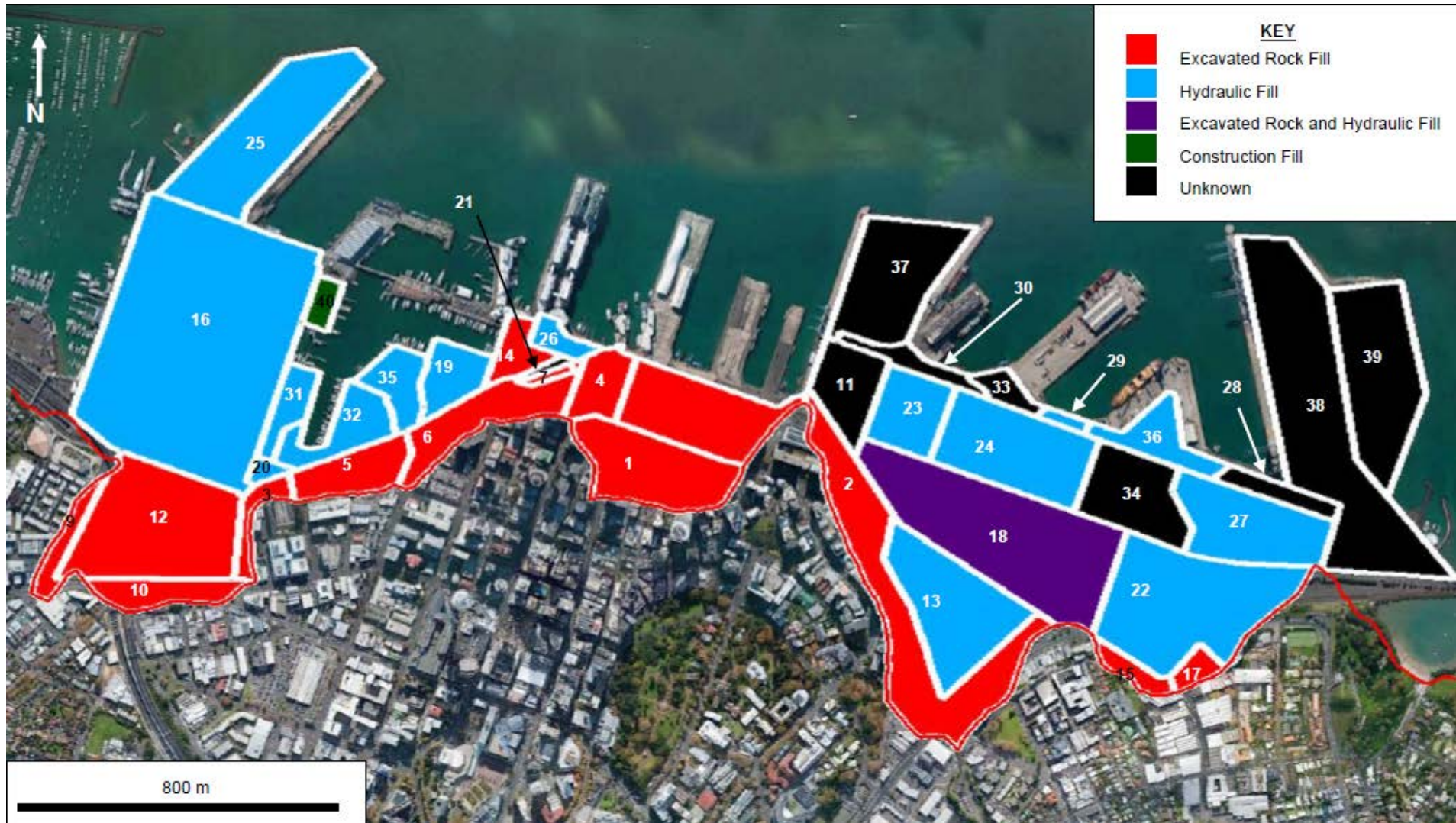
# Canterbury



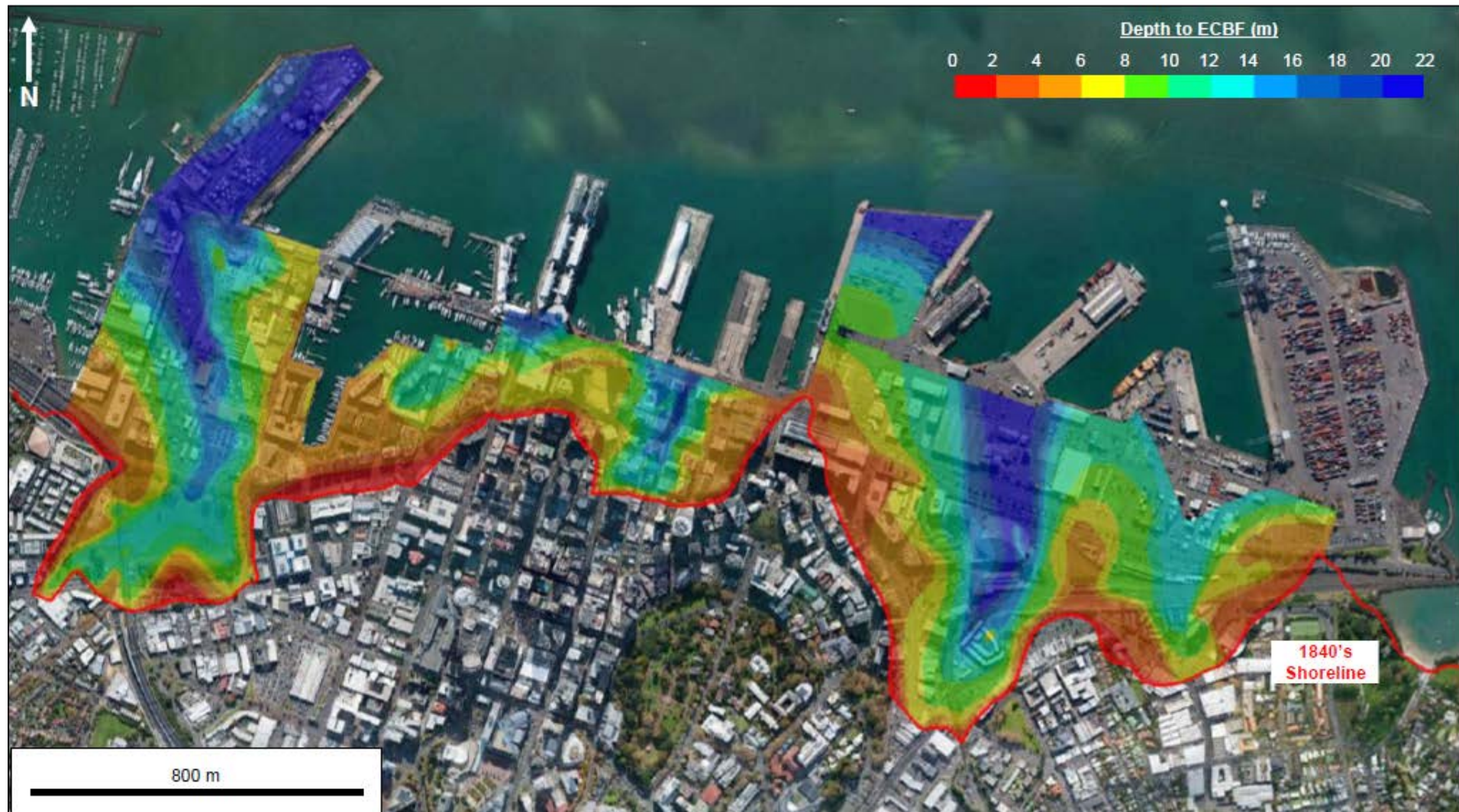
# Canterbury

- Simulations

# Auckland -CBD

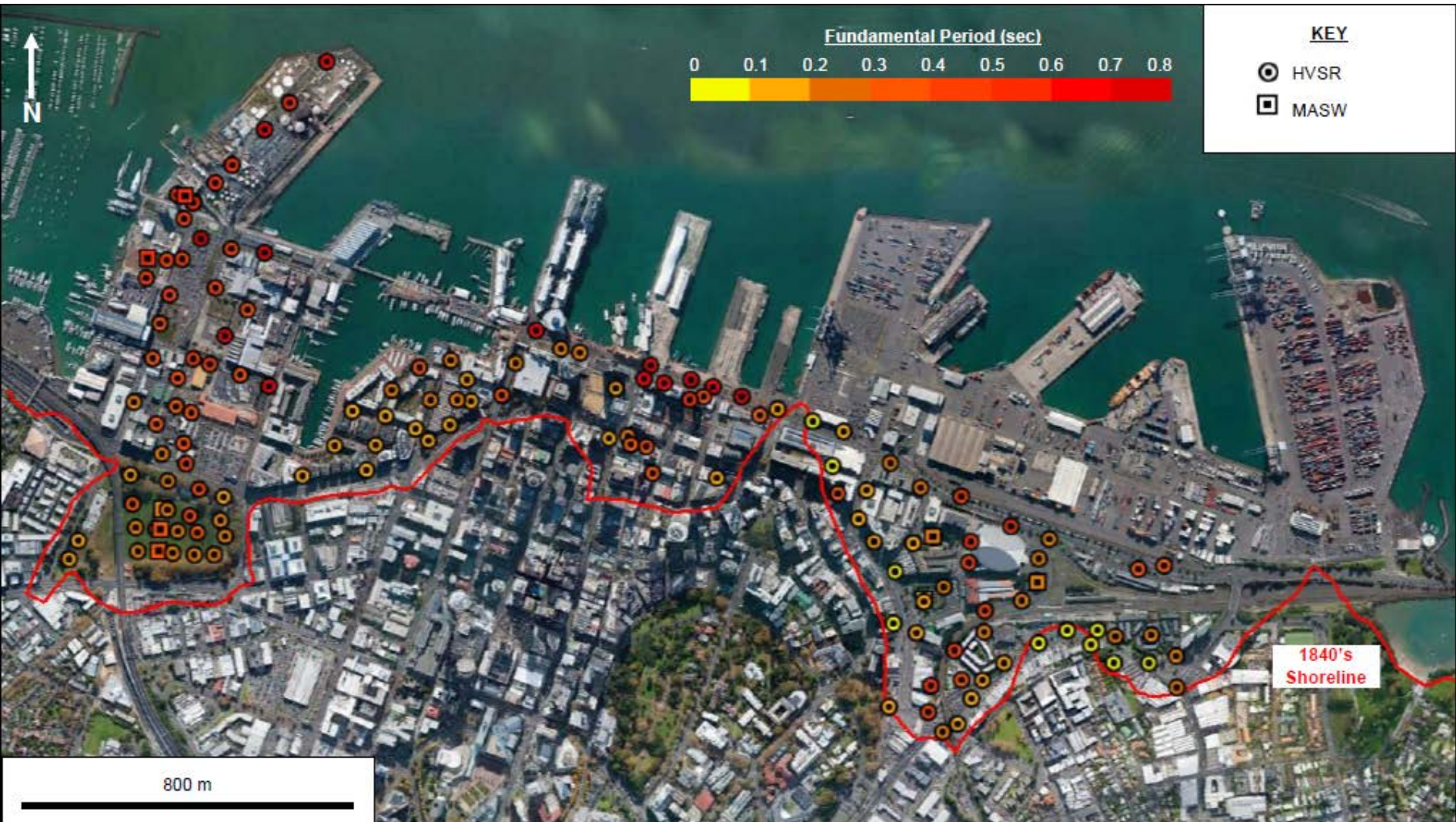


# Auckland -CBD

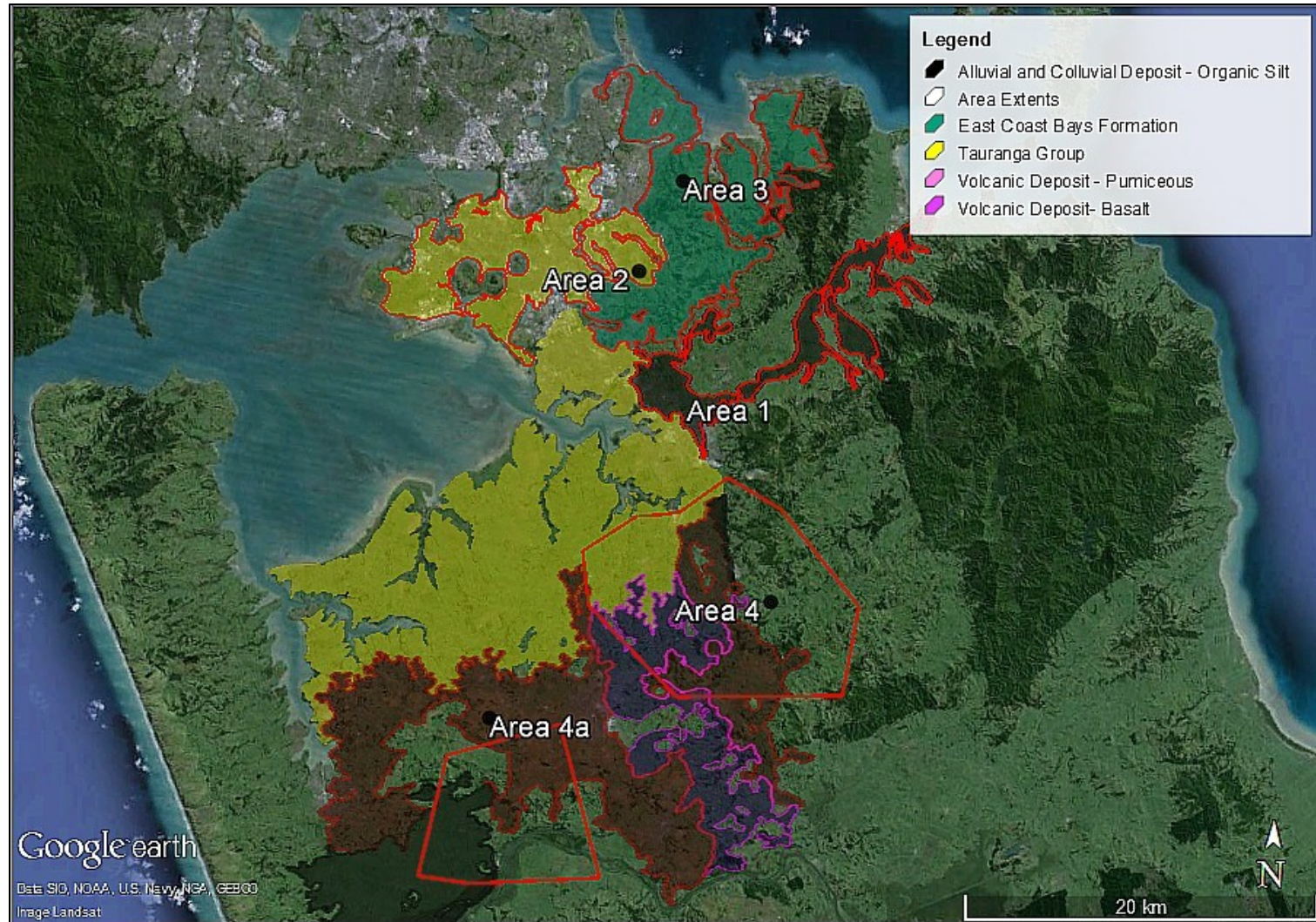




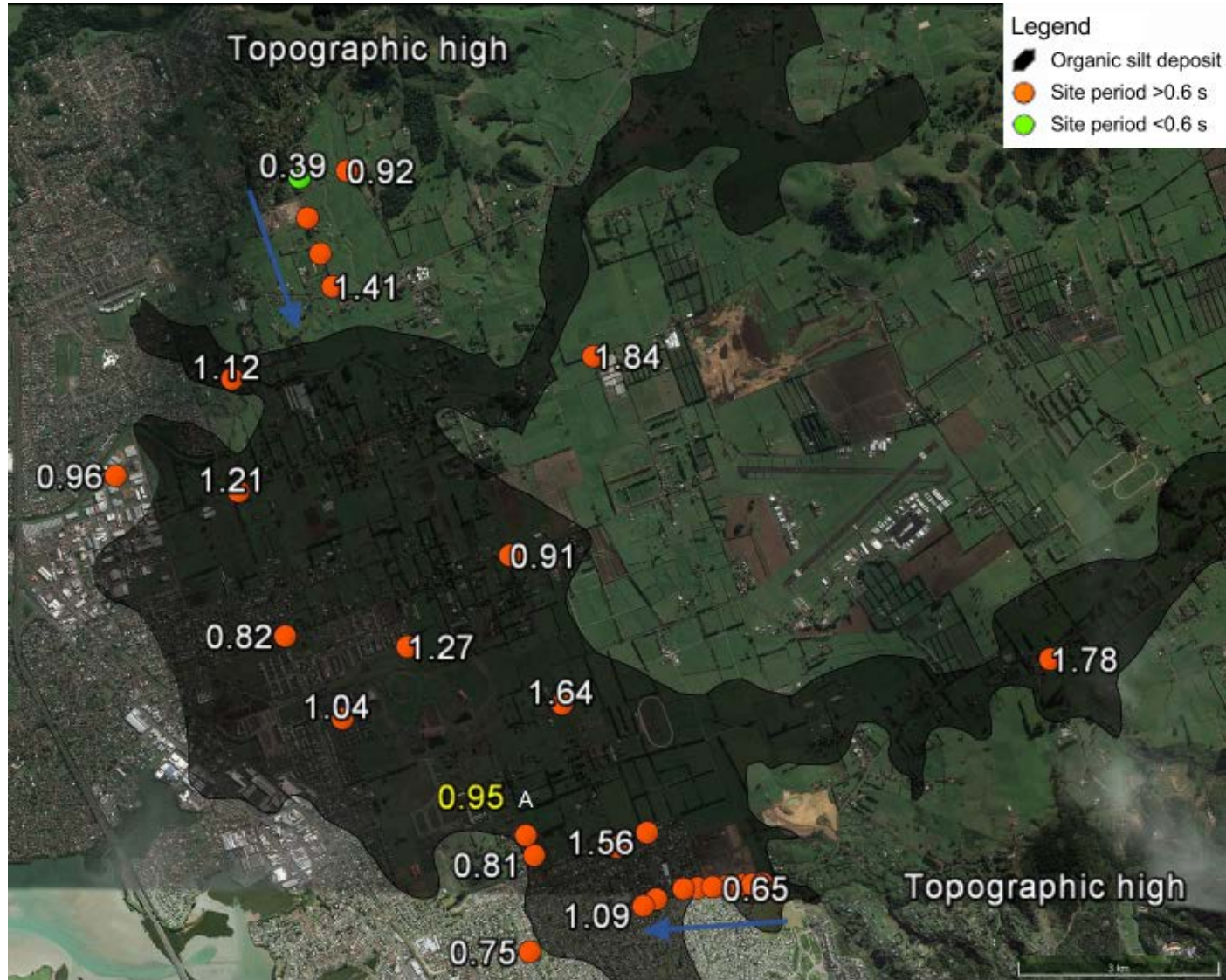
# Auckland -CBD



# Auckland



# Auckland – Organic Silts



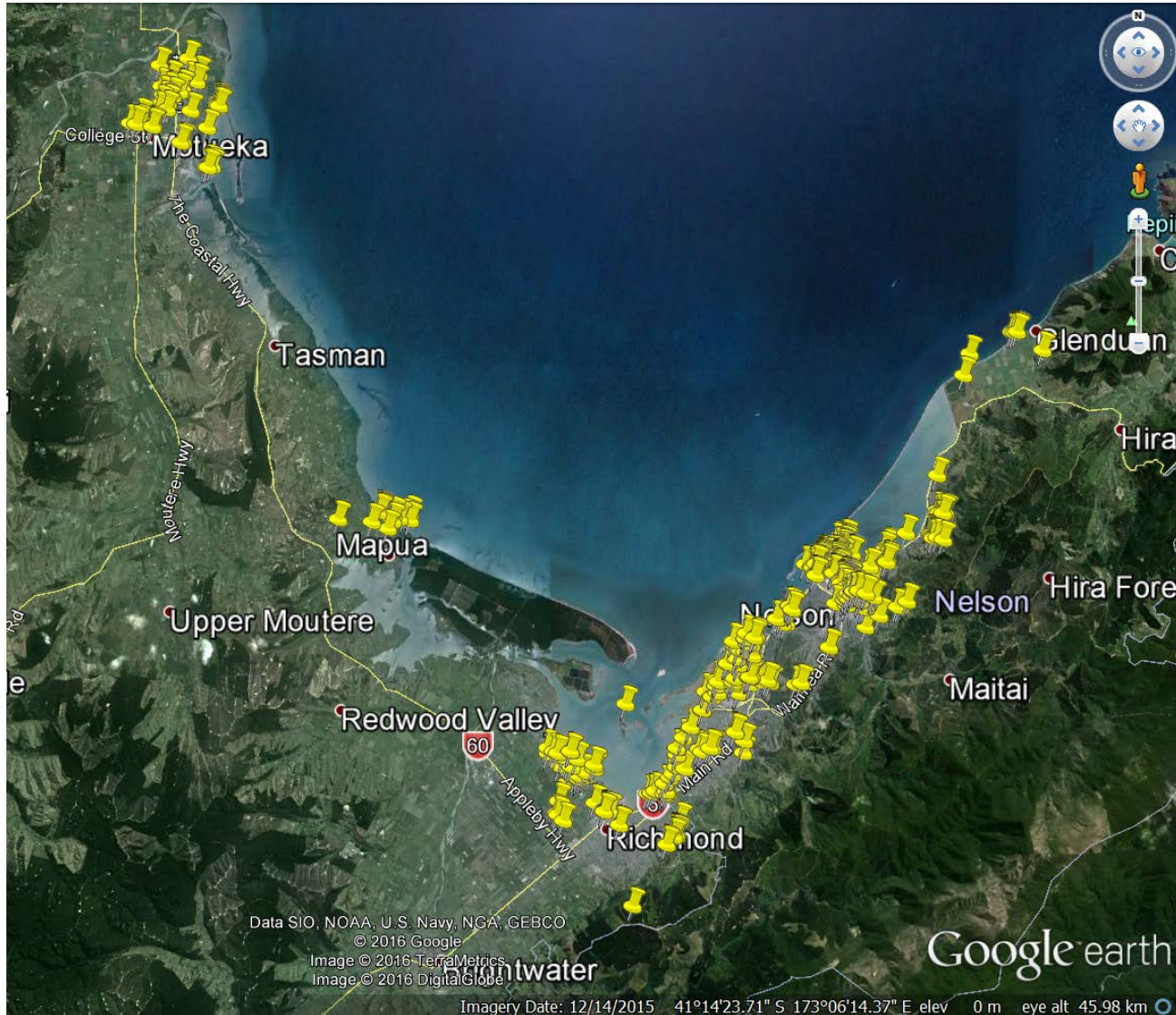
# Auckland – Surficial Basalts



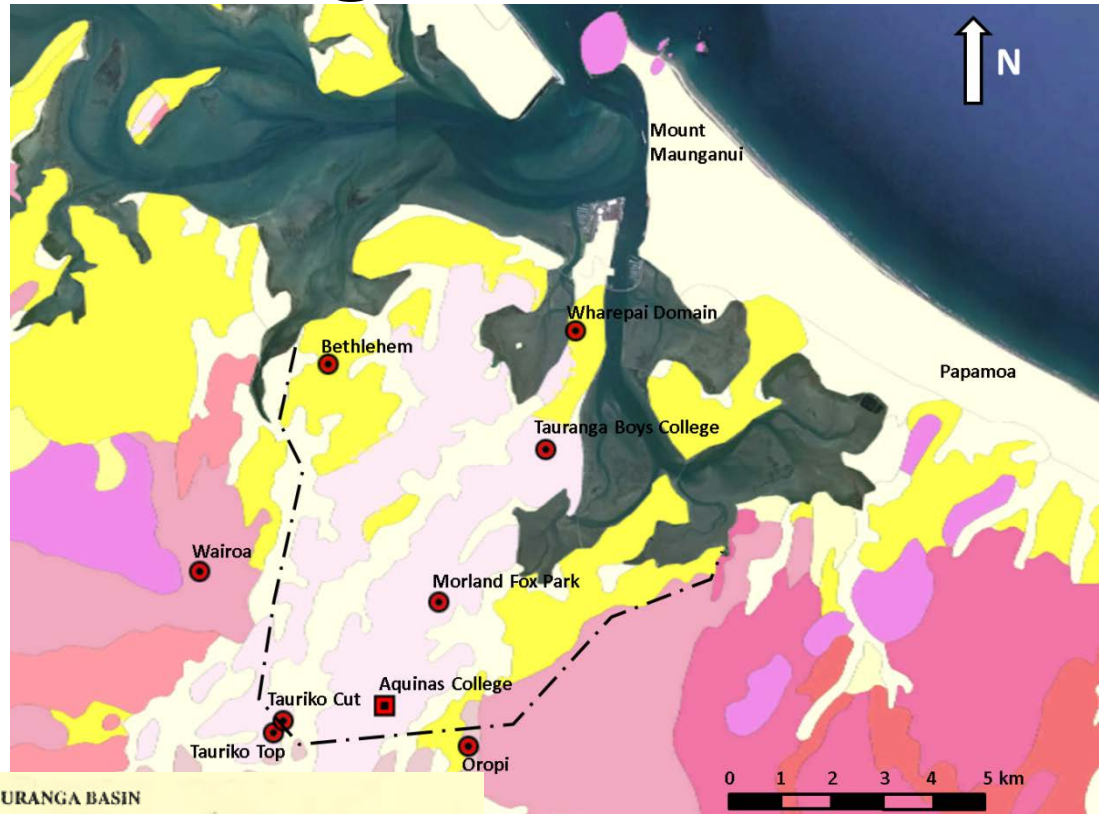
# Nelson/Tasman



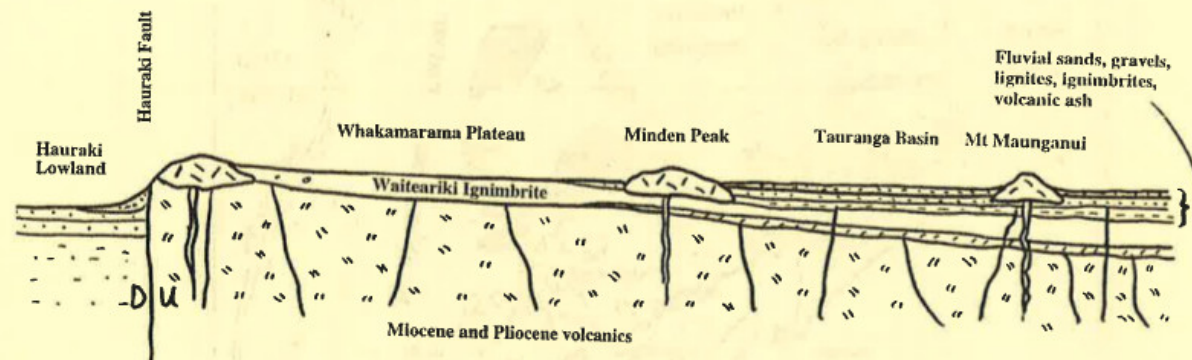
# Nelson/Tasman



# Tauranga



CROSS-SECTION OF KAIMAI RANGE – TAURANGA BASIN



# Wellington





# Other studies

- Whakatane
- Auckland - liquefaction
- West Coast

# National

- Coarse level assessment
  - Vs30
  - Refine following more detailed investigations