

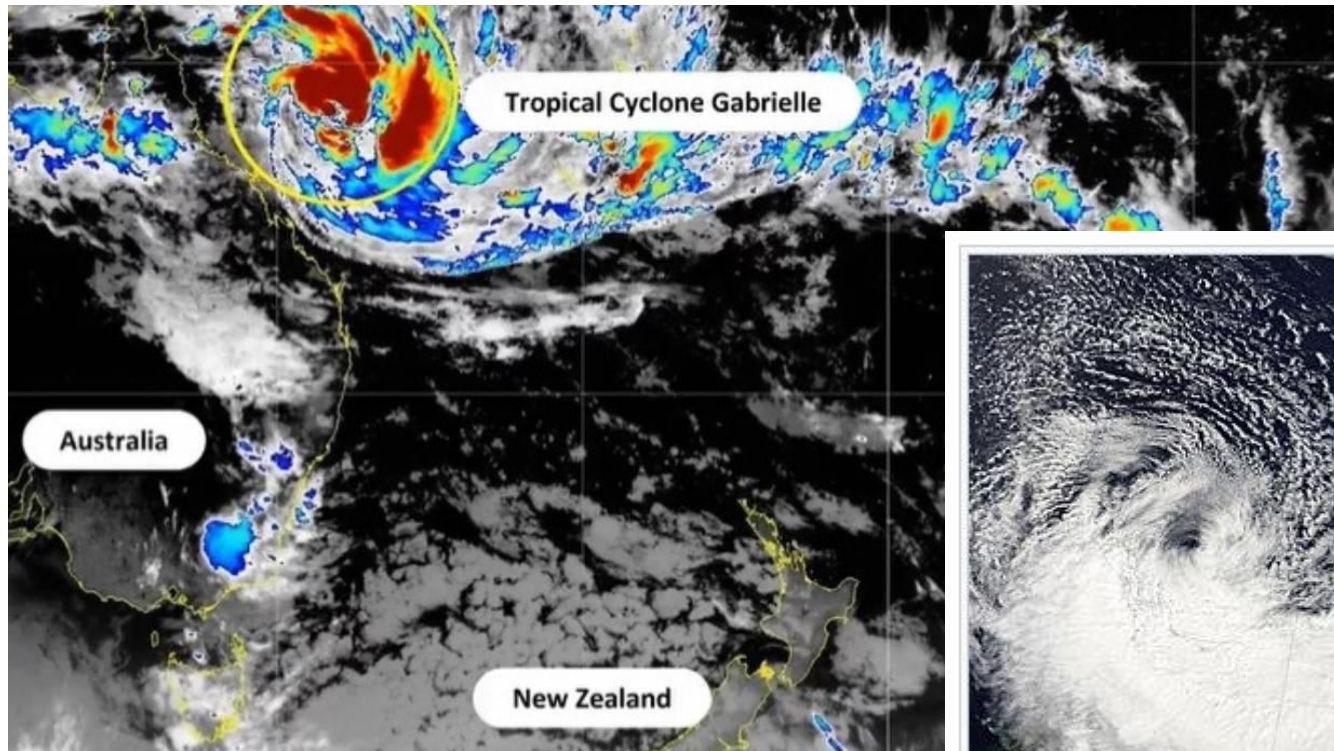


Preparation & Recovery

Cyclone Gabriel Response 2023



Initial Storm Warnings



Gabrielle nearing the North Island on 13 February

- 10 days prior, first MetService warnings of potential cyclone headed to NZ
- 9 February, states of emergency in place in Auckland and the Coromandel Peninsula as a result of [earlier floods](#) were extended in anticipation of Gabrielle's arrival,
- 12th - 14th of February, parts of Aotearoa New Zealand were devastated with recorded rainfall amounts of 300-400mm, wind gusts of 130-140km/h and waves were recorded as high as 11 metres along some of our coasts.

Increase in Scale



Initial key focus = Auckland



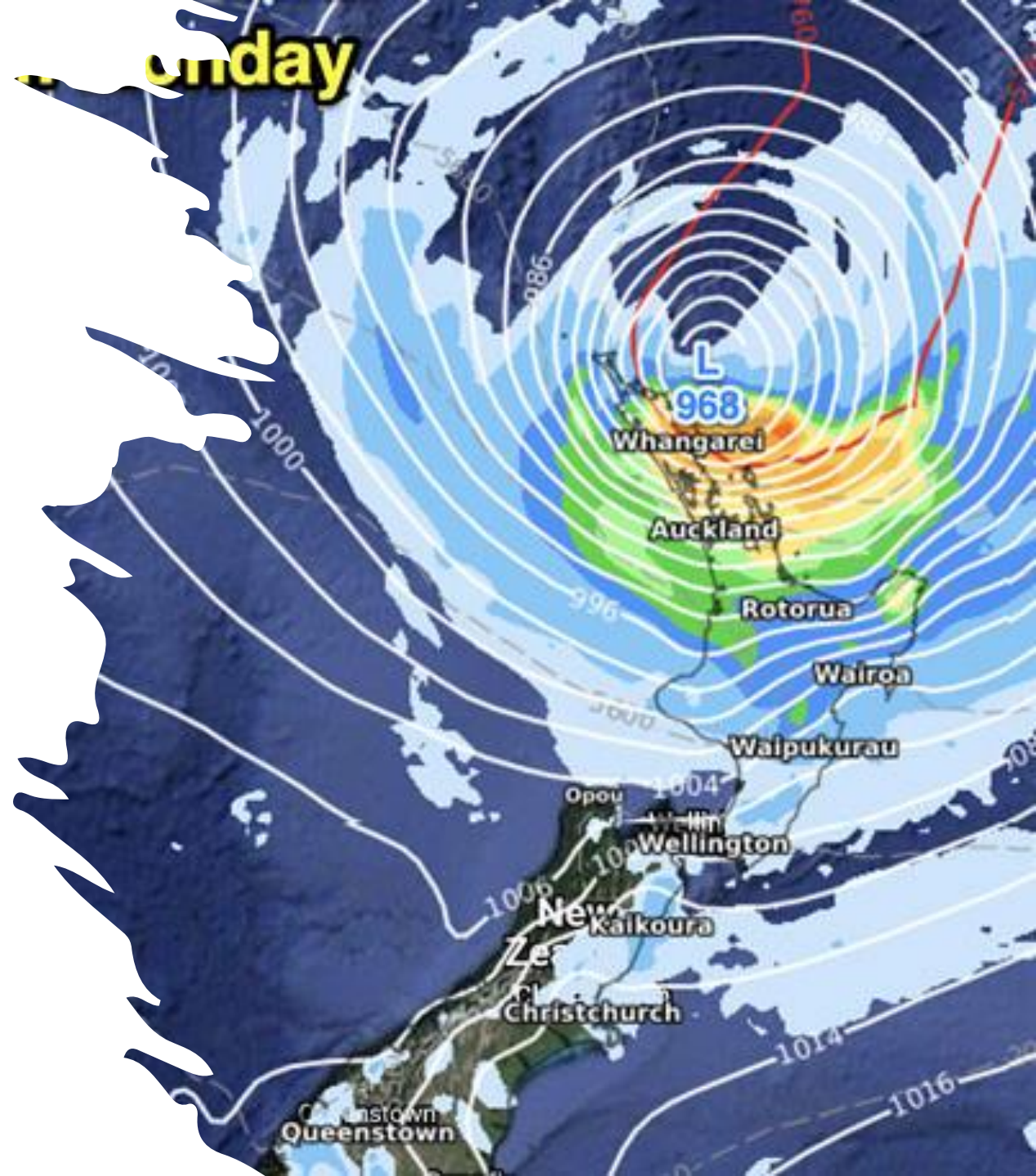
Soon upgraded to = further North Island regions



Red Warnings for Rain issued (Northland, Auckland, Coromandel, Gisborne, Hawkes Bay)




Red Warnings for Wind issued (Northland, Auckland, Coromandel, and Taranaki)




TEF Activation

Working party made up of the key network operators, retailers and other telco organisations that might be affected by any given emergency event.



Feed information into the National Emergency Management Agency (NEMA)



Established by the telecommunications sector to ensure effective management of emergencies that impact national and regional telecommunications;



Image 1 of 43: A truck has been left overwhelmed in debris on SH2 between Napier and Waeroa. Photo / Defence



Gabrielle damage eats up all year's lines repair budget | BusinessDesk

Images may be subject to copyright. [Learn More](#)

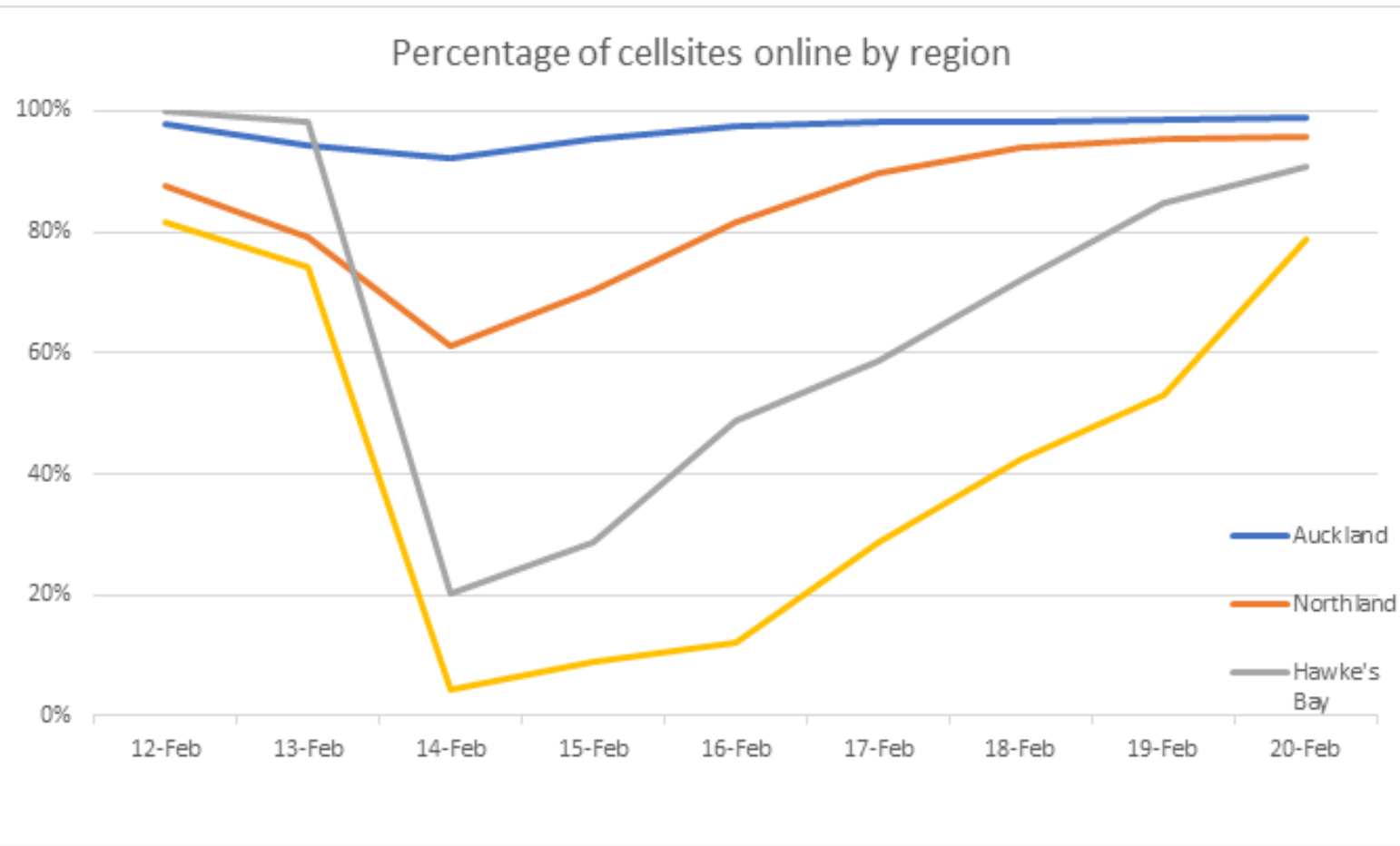
[Visit](#)



Telecommunications Sector Impact

- Outages across Far North, Northland, Auckland, Coromandel, Waikato and Bay of Plenty regions and throughout the Hawke's Bay and Gisborne.
- 80% of the cellsite loss due to power outages, 20% due to fibre cuts.
- All telecommunications requires power and connectivity to work.

Percentage of cellsites online by region



Response Efforts



Electricity supply aided by more generators shipped in



Satellite backhaul units



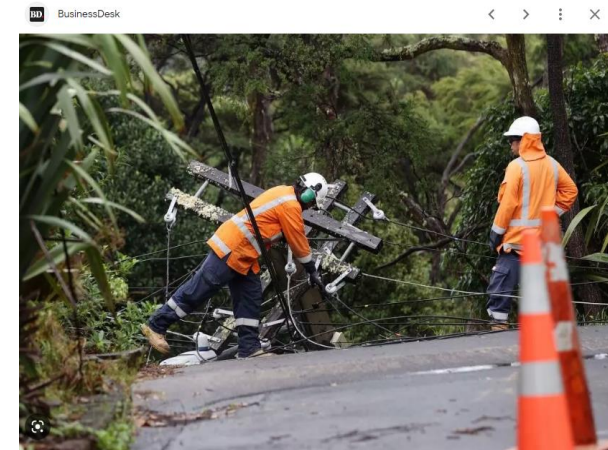
Repairs to significant Fibre connections in and out of regions



Helicopters used extensively to provide access and speed up restoration work



Northland facing \$70m-plus Cyclone Gabrielle bill – and counting | RNZ News



Next Steps/Future learnings

As an industry we are:

- Updating our TEF processes
- Bringing forward the development of an industry wide Emergency Response plan
- Engaging with government about co-investment in further network diversity that would serve regions where geography and population would otherwise make it uneconomic.
- Resetting expectations around what is a “normal” weather event.

Lessons learned:

- Electricity supply is key.
- Fibre networks – with roading corridors or across country?
- River crossings – at bridges or elsewhere?
- Replacing electricity supply with generators and fuel is only partially an answer

Prepare for the next event, not the last one:

- Our last state of national emergency was the pandemic. The next one will no doubt be different again.

Next Steps/Future learnings

As an industry we are:

- Updating our TEF processes
- Bringing forward the development of an industry wide Emergency Response plan
- Engaging with government about co-investment in further network diversity that would serve regions where geography and population would otherwise make it uneconomic.
- Resetting expectations around what is a “normal” weather event.

Lessons learned:

- Electricity supply is key.
- Fibre networks – with roading corridors or across country?
- River crossings – at bridges or elsewhere?
- Replacing electricity supply with generators and fuel is only partially an answer

Prepare for the next event, not the last one:

- Our last state of national emergency was the pandemic. The next one will no doubt be different again.